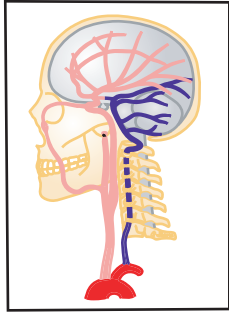
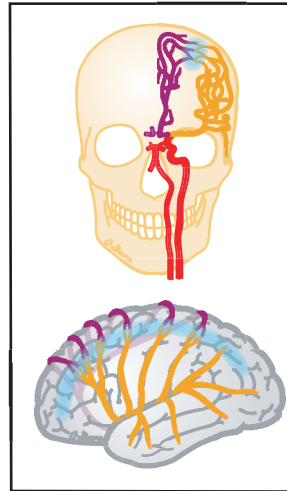


StrokeSTOP Reference Drawings

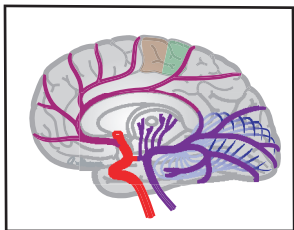
(by Anne B. Greene, MA, CMI)



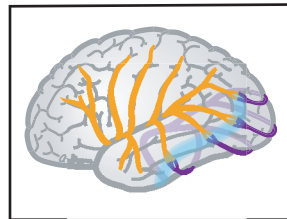
1. CAROTID-VERTEBRAL
Vessel origins and distributions



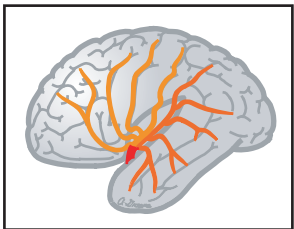
7. ACA-MCA ANTERIOR & LATERAL
Border zones



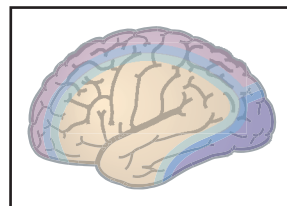
2. MEDIAL BRAIN
ACA
PCA
Functional areas



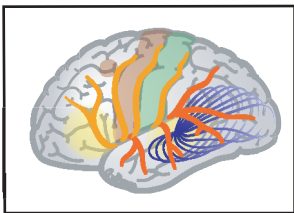
8. MCA-PCA LATERAL
Border zones



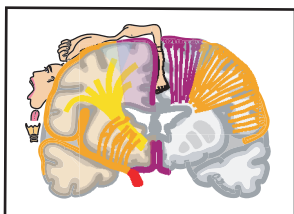
3. LATERAL BRAIN OPENED
MCA - superior and inferior branches



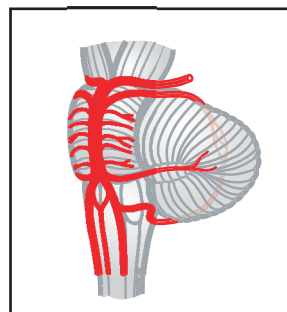
9. FOREBRAIN TERRITORY MAPS
Lateral
Medial
Horizontal
Superior
Inferior



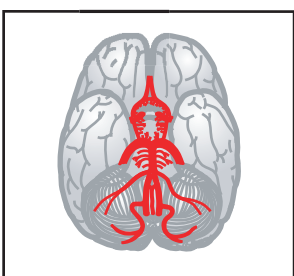
4. LATERAL BRAIN
MCA
Functional areas



5. CORONAL BRAIN
ACA
MCA

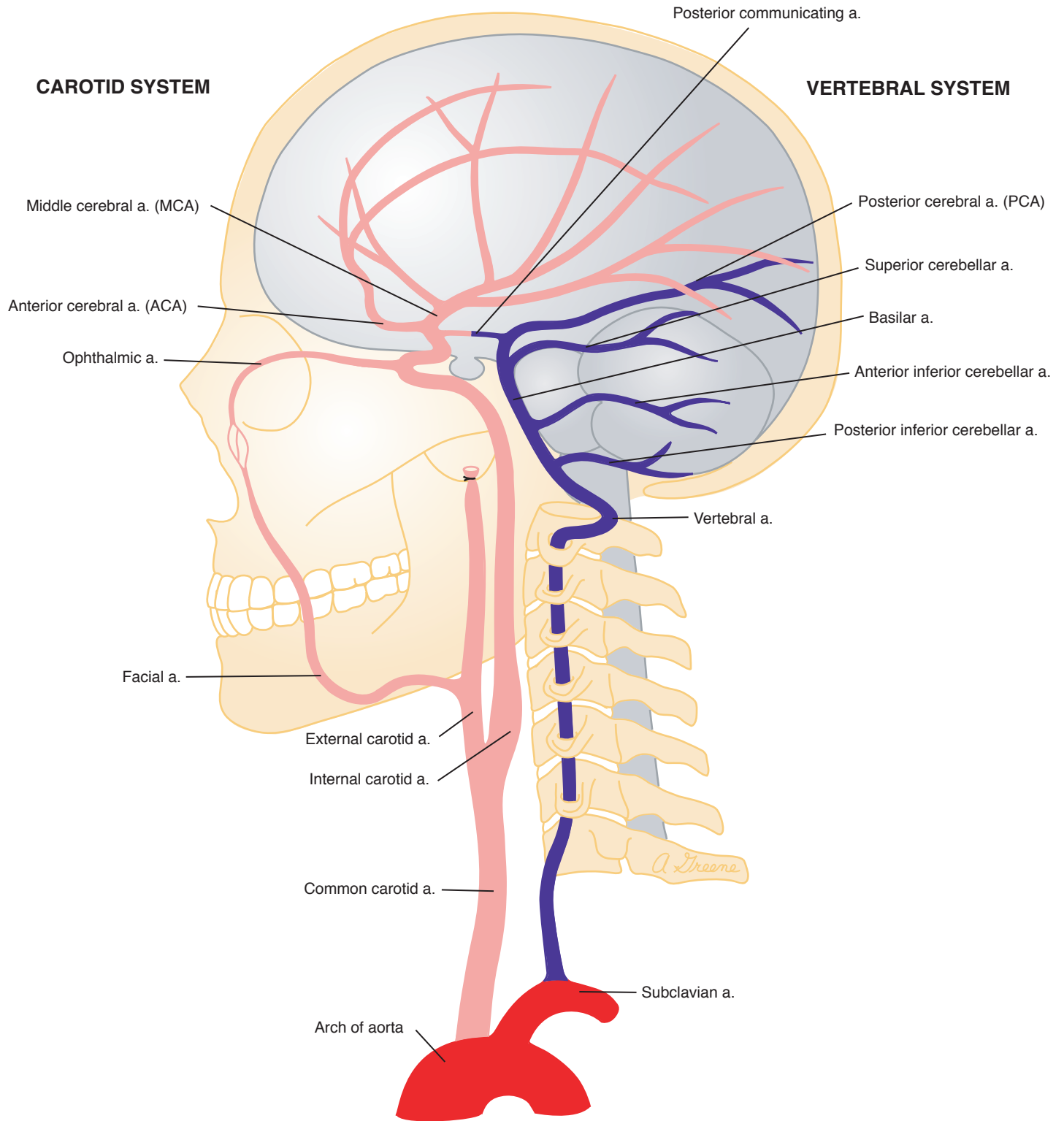


10. BRAINSTEM SYNDROMES
Midbrain
Mid-pons
Caudal pons
Rostral medulla

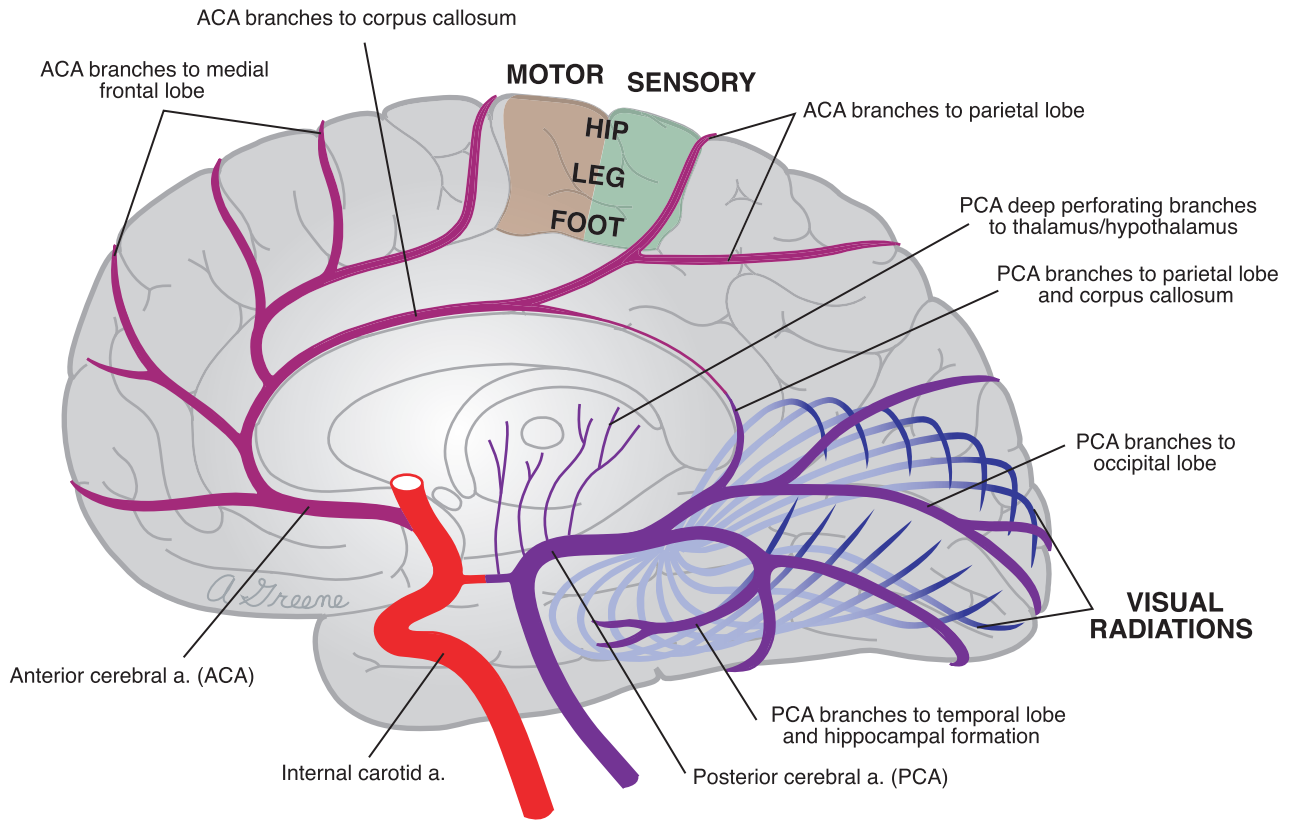


6. BASE OF BRAIN
Carotid system
Vertebral-basilar system

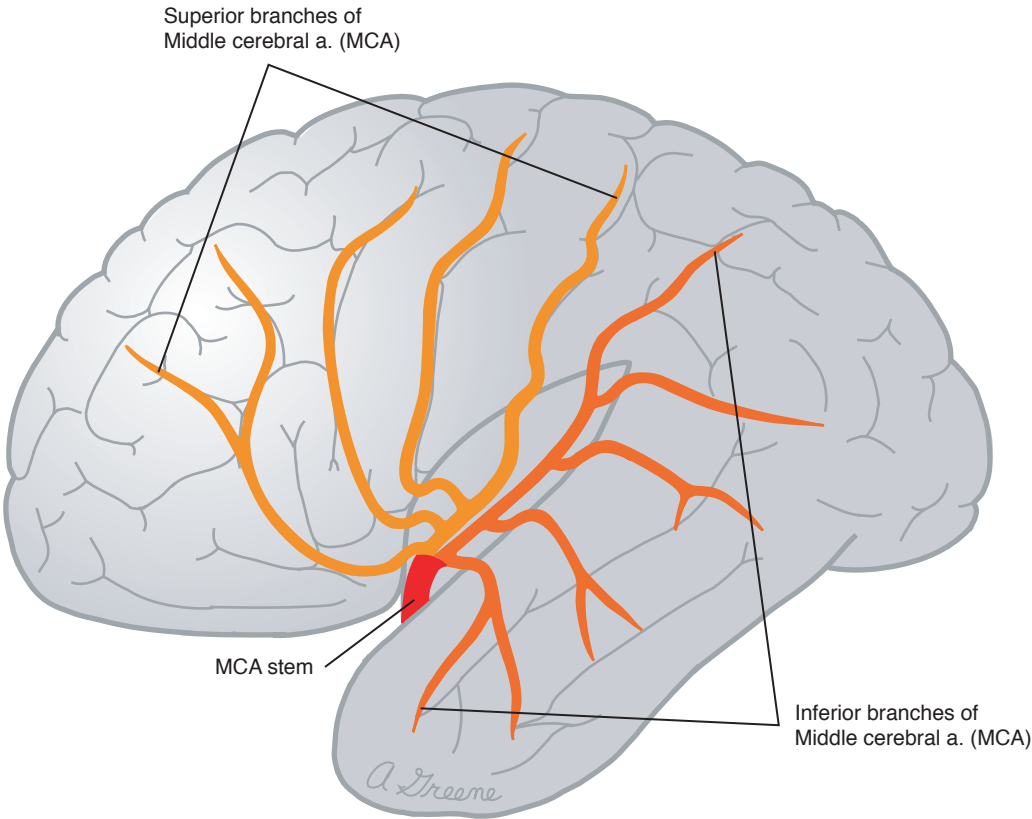
1. CAROTID-VERTEBRAL



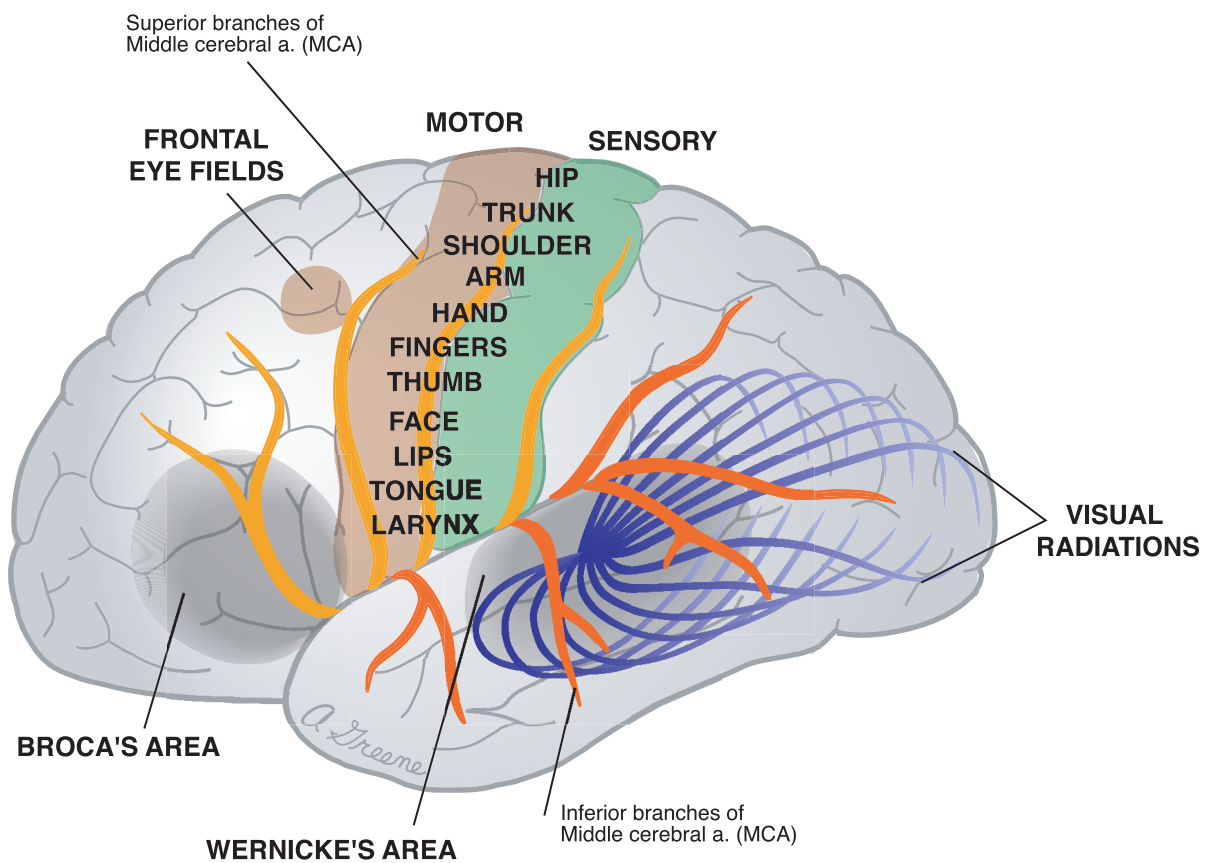
2. MEDIAL BRAIN



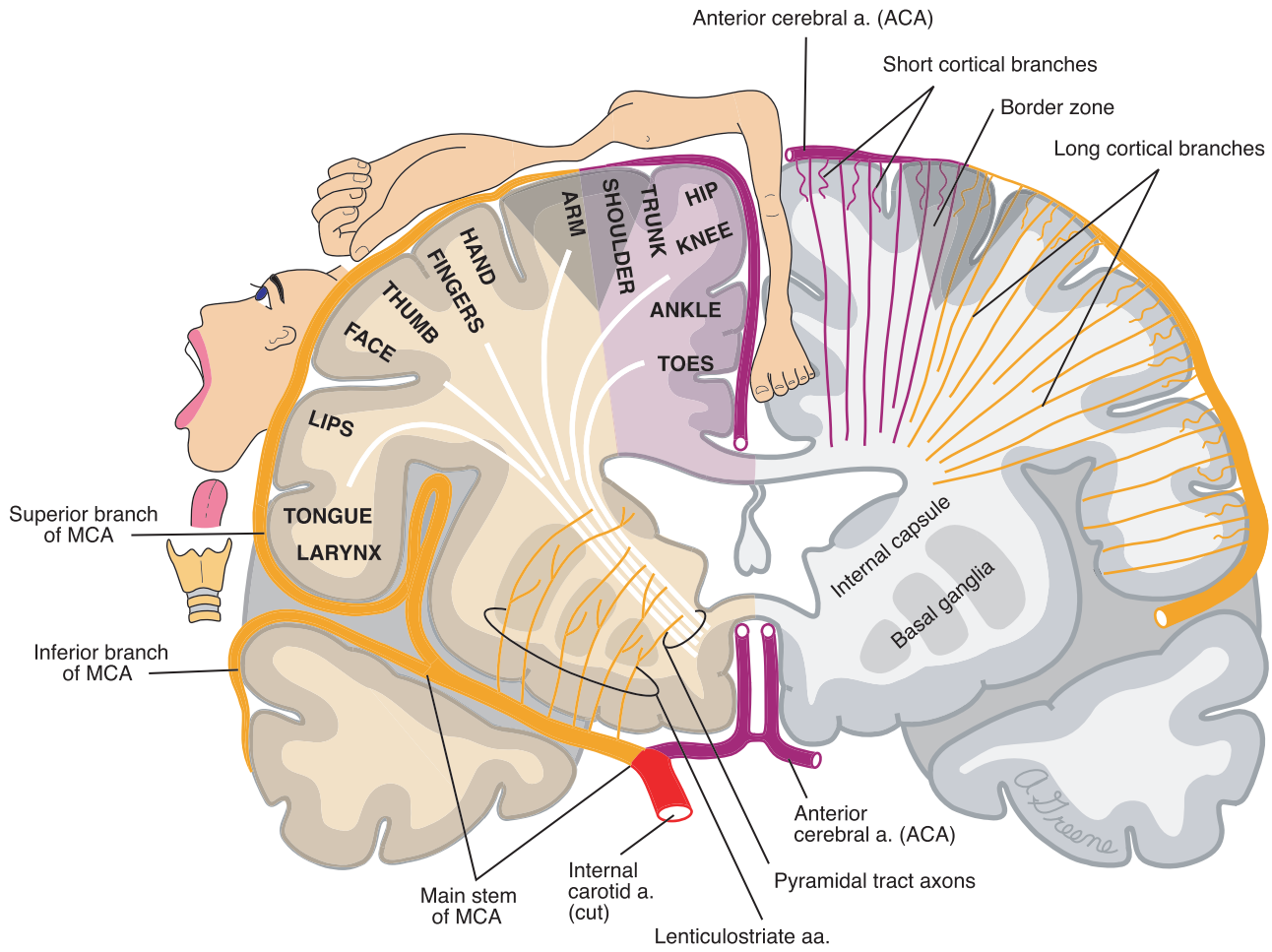
3. LATERAL BRAIN OPENED



4. LATERAL BRAIN



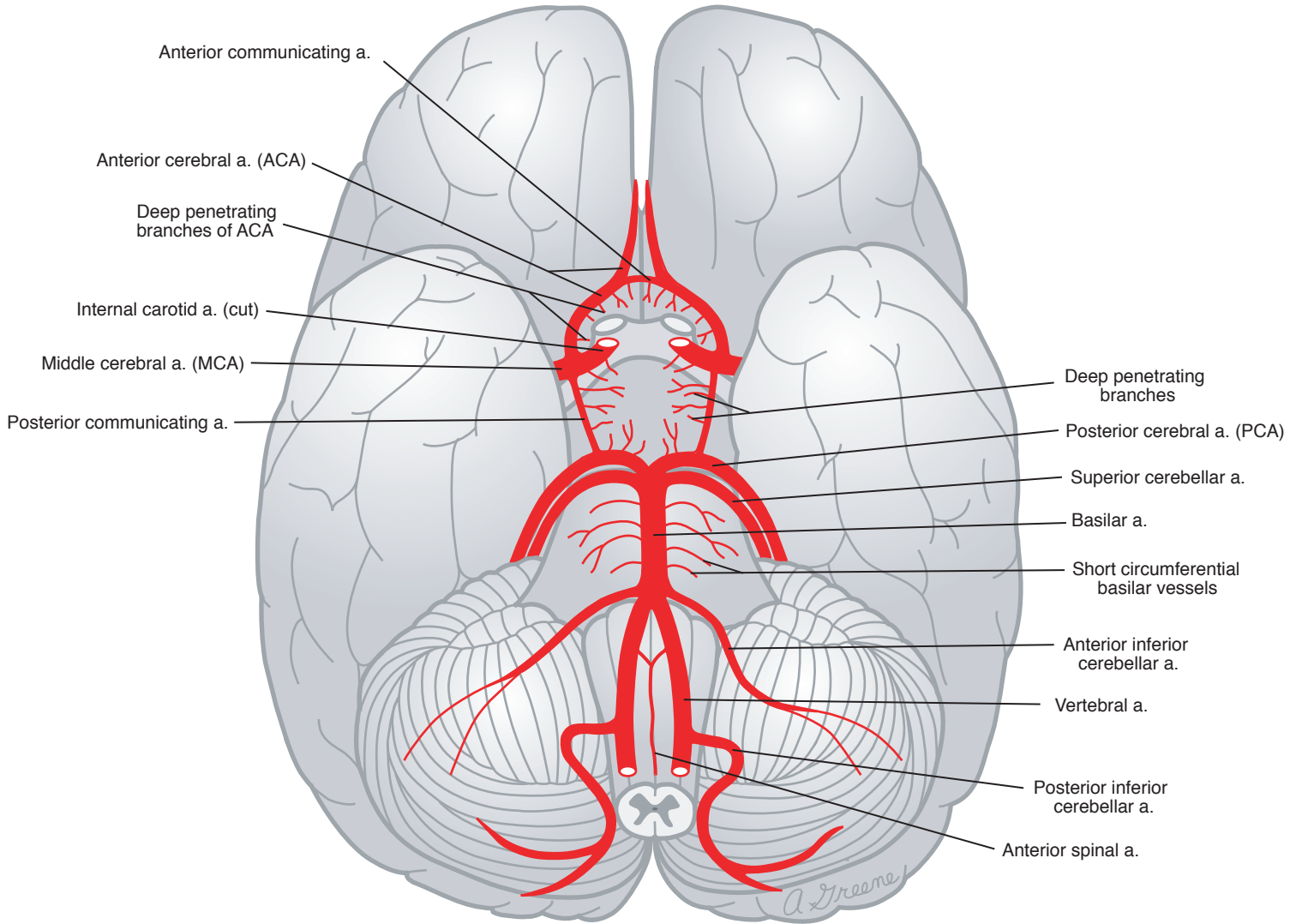
5. CORONAL BRAIN



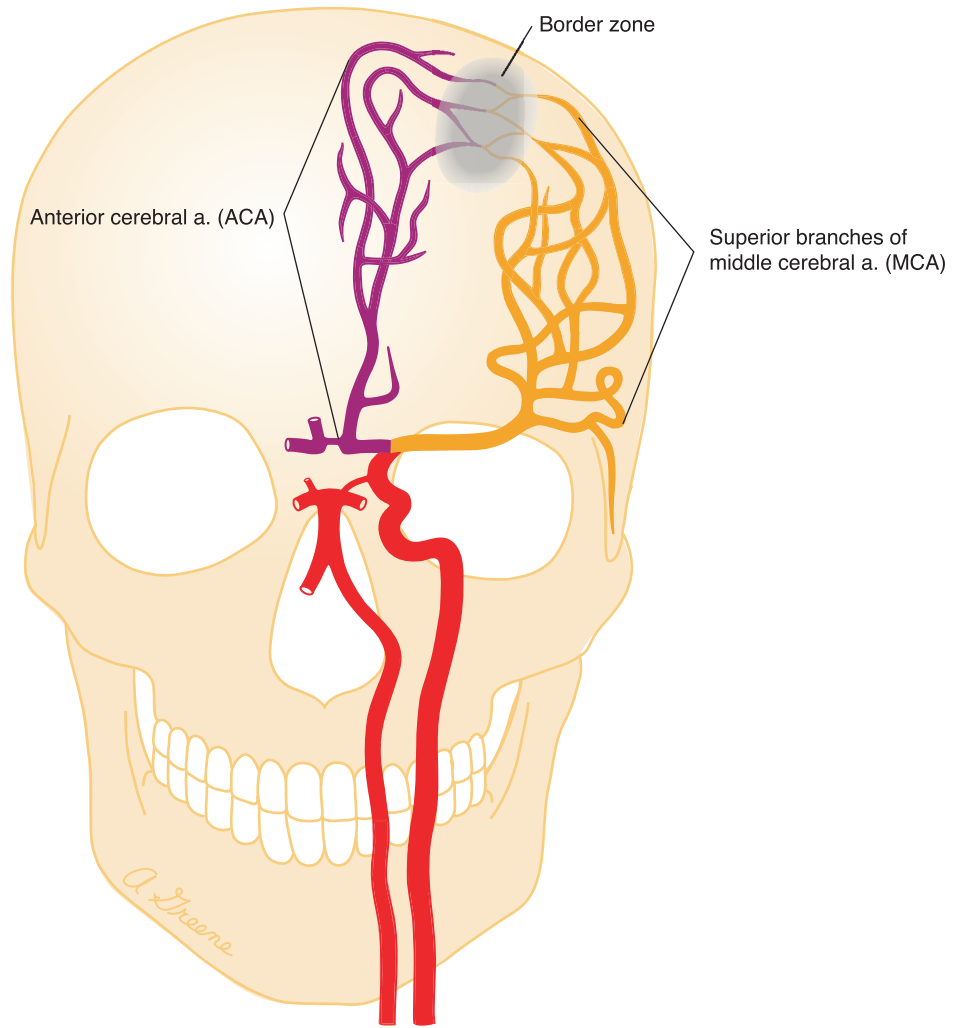
6. BASE OF BRAIN

CAROTID SYSTEM

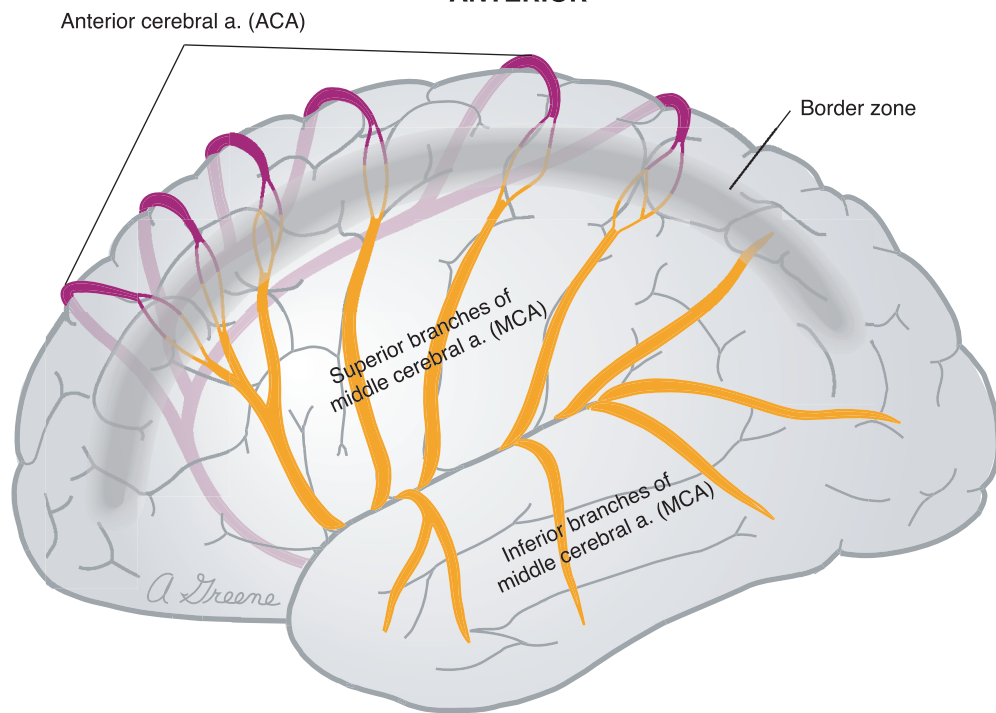
VERTEBRAL-BASILAR SYSTEM



7. ACA-MCA

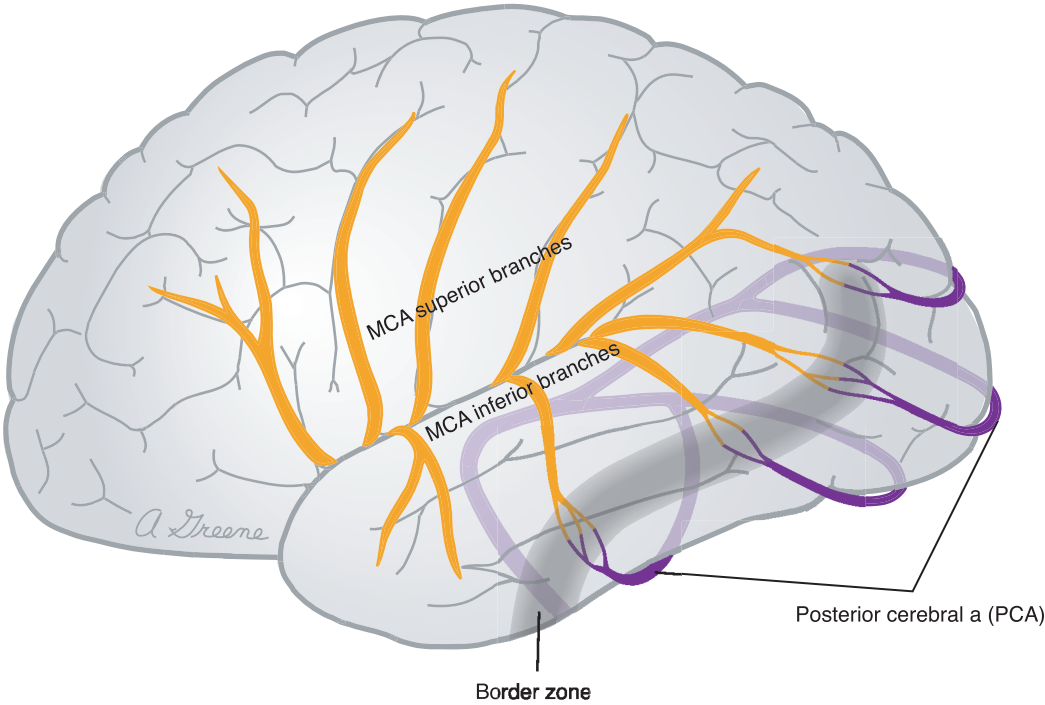


ANTERIOR

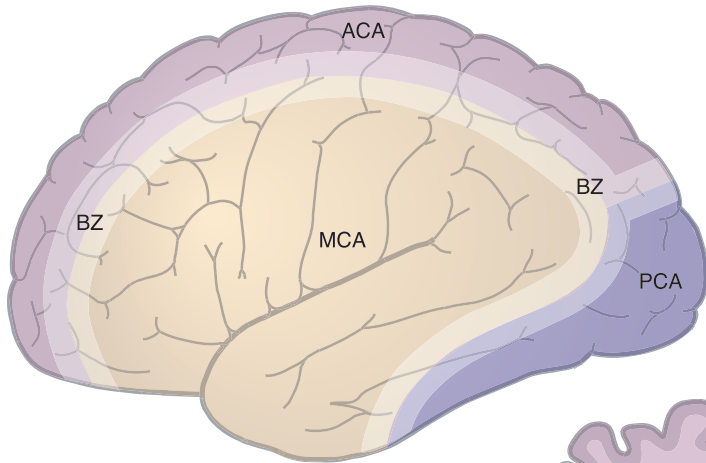


LATERAL

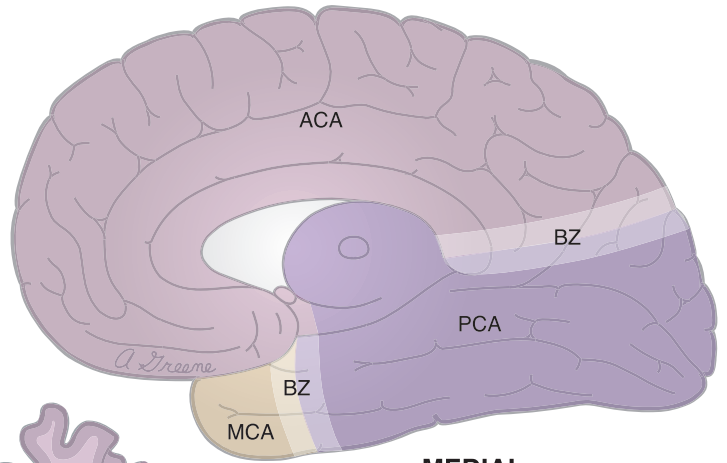
8. MCA-PCA LATERAL



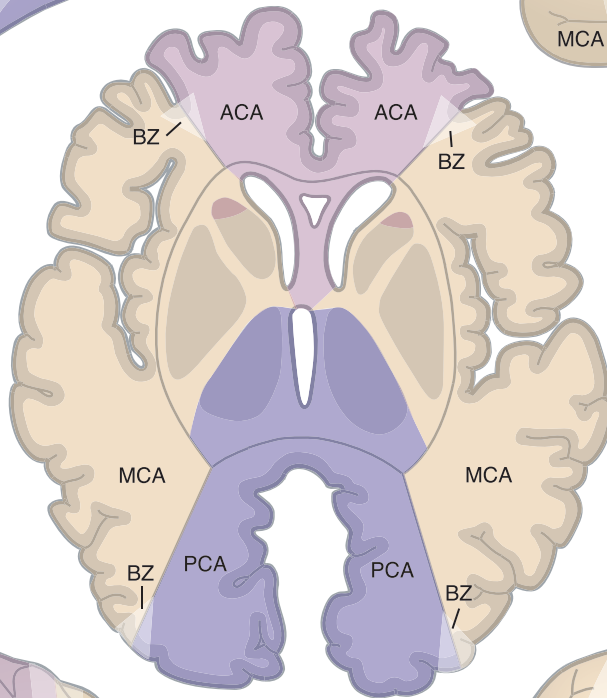
9. FOREBRAIN TERRITORY MAPS



LATERAL

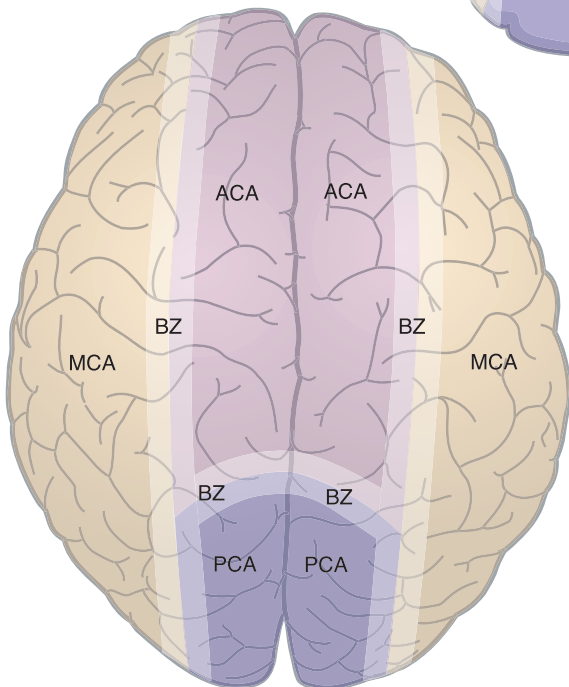


MEDIAL

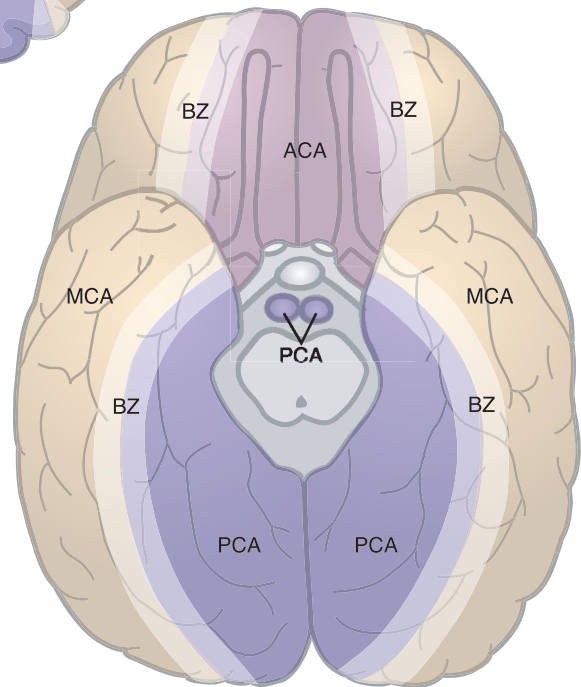


HORIZONTAL

KEY	
ACA	Anterior cerebral a.
MCA	Middle cerebral a.
PCA	Posterior cerebral a.
BZ	Border zones

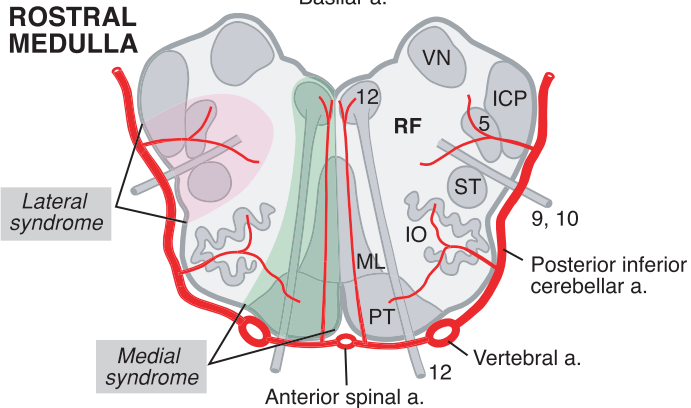
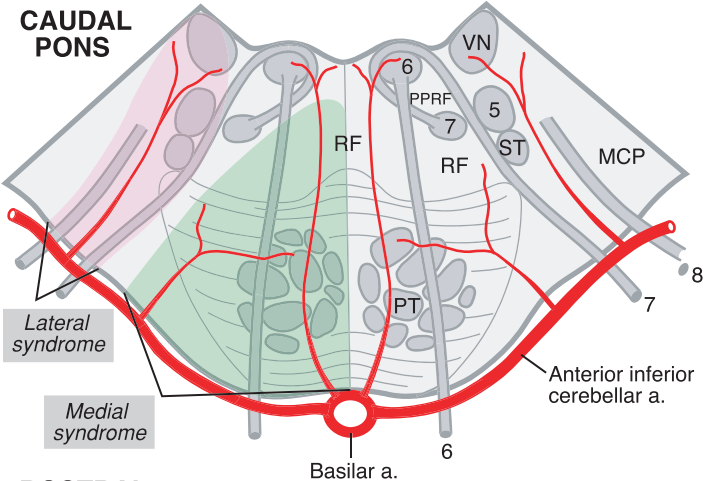
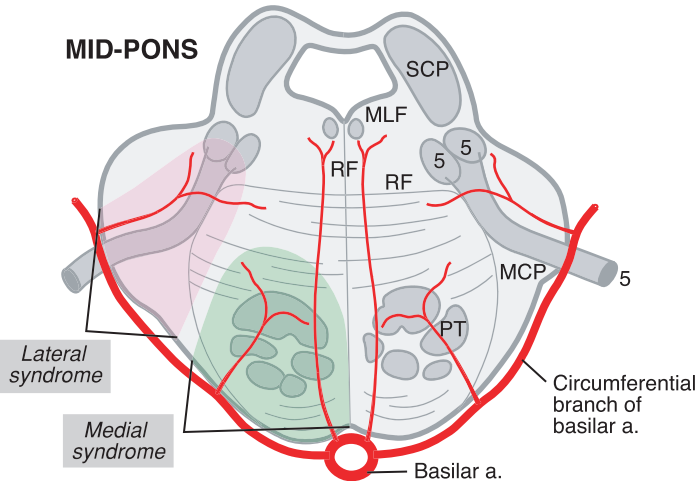
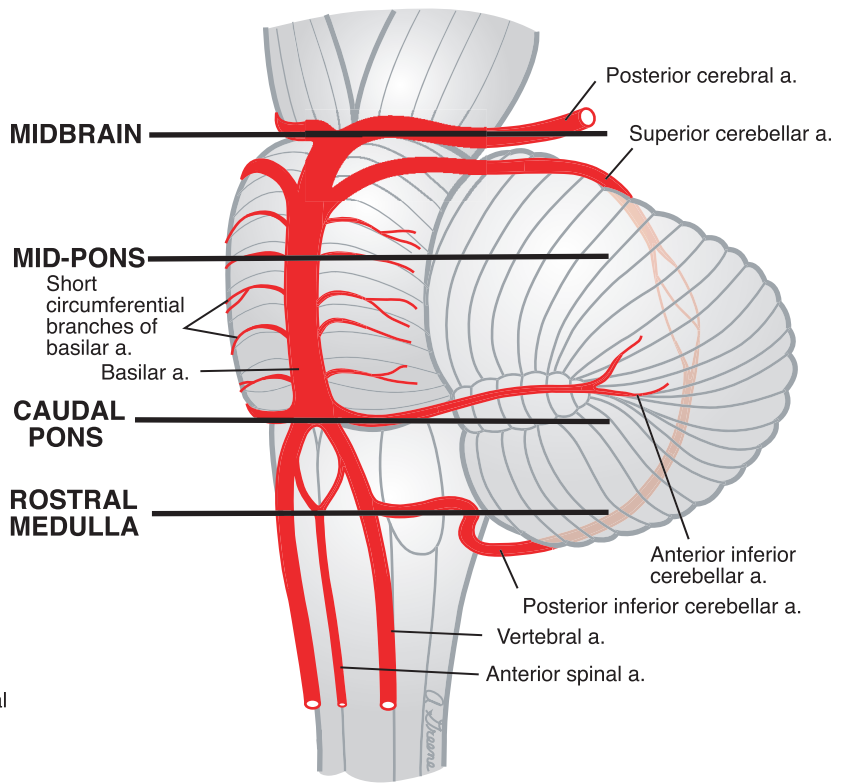
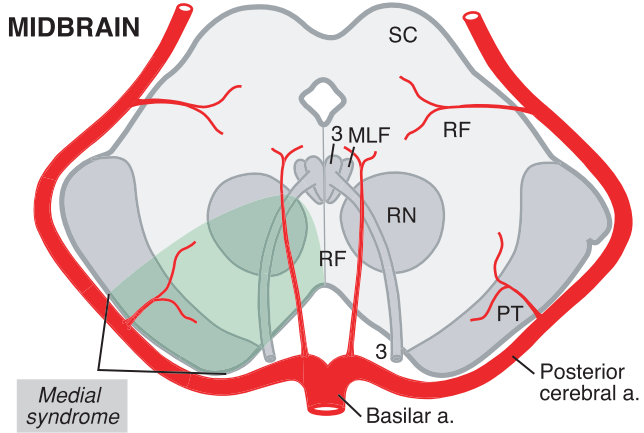


SUPERIOR



INFERIOR

10. BRAINSTEM SYNDROMES



KEY	
IO	Inferior olivary complex
ML	Medial lemniscus
MLF	Medial longitudinal fasciculus
PPRF	Paramedian pontine reticular formation
PT	Pyramidal tract
RF	Reticular formation
RN	Red nucleus
SC	Superior colliculus
ST	Spinothalamic tract
VN	Vestibular nuclei
ICP	Inferior cerebellar peduncle
MCP	Middle cerebellar peduncle
SCP	Superior cerebellar peduncle
3-12	refer to cranial nerves or their nuclei