

HIV/AIDS In Hispanics as Compared to the General Population of Massachusetts

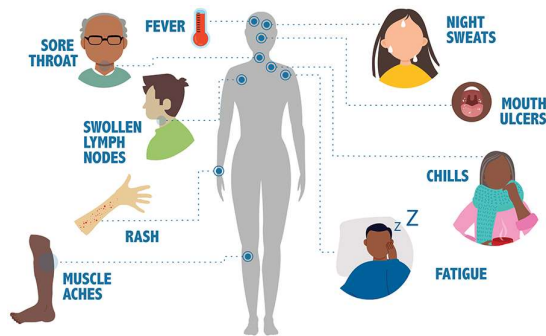
BACCMD/SEP 2023:

JADE OSHODI, TRISHA LARIOS, CASSANDRA TREVINO, ELIANNY LOPEZ, & LAISHAWN DUNCAN

HIV/AIDS

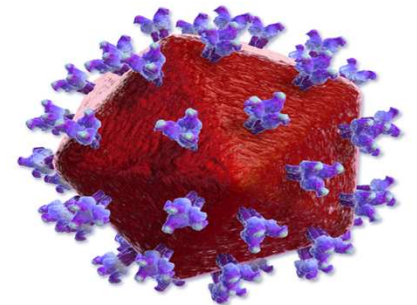
Science of HIV

- ▶ Infection that **attacks the immune system**
- ▶ Targets white blood cells
 - ▶ HIV cells attack and kill CD4 cells
- ▶ Two types of HIV
 - ▶ Acute
 - ▶ Chronic



Science of AIDS

- ▶ Chronic, life-threatening condition **caused by HIV**
- ▶ Typically takes 8-10 years for HIV to turn into AIDS
- ▶ Symptoms and illnesses are more severe

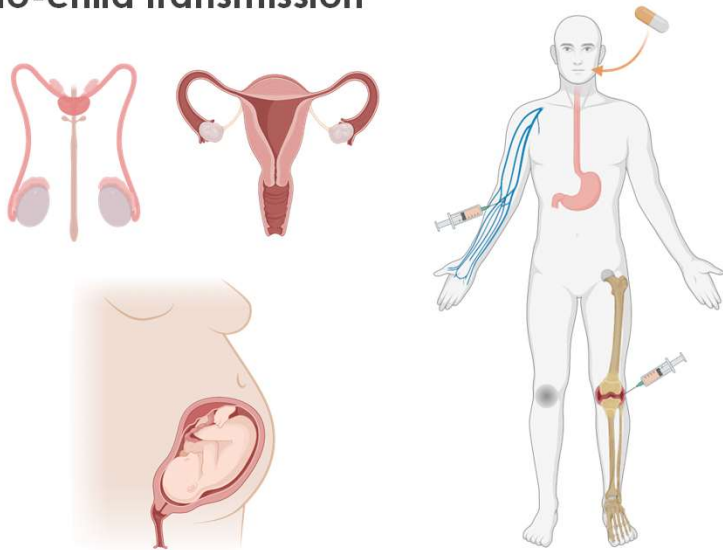


Human Immunodeficiency Virus (HIV)

Transmission of HIV/AIDS

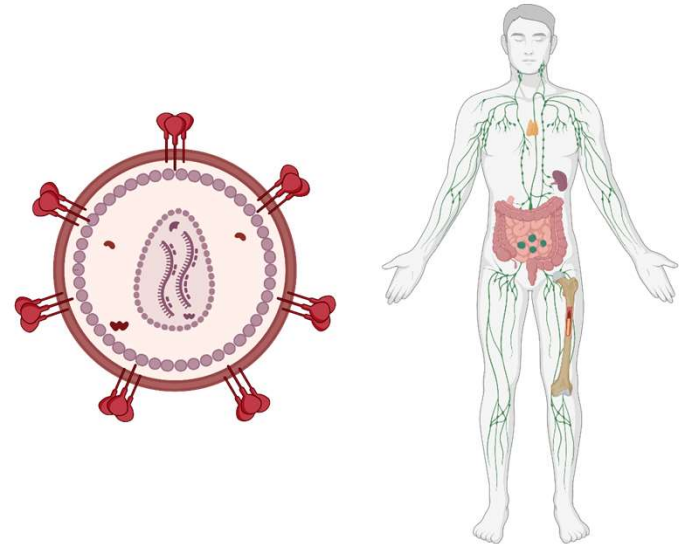
HIV

- ▶ Most people get HIV through **anal** or **vaginal sex**, or sharing **needles, syringes**, or other **drug injection** equipment as well as **mother-to-child transmission**



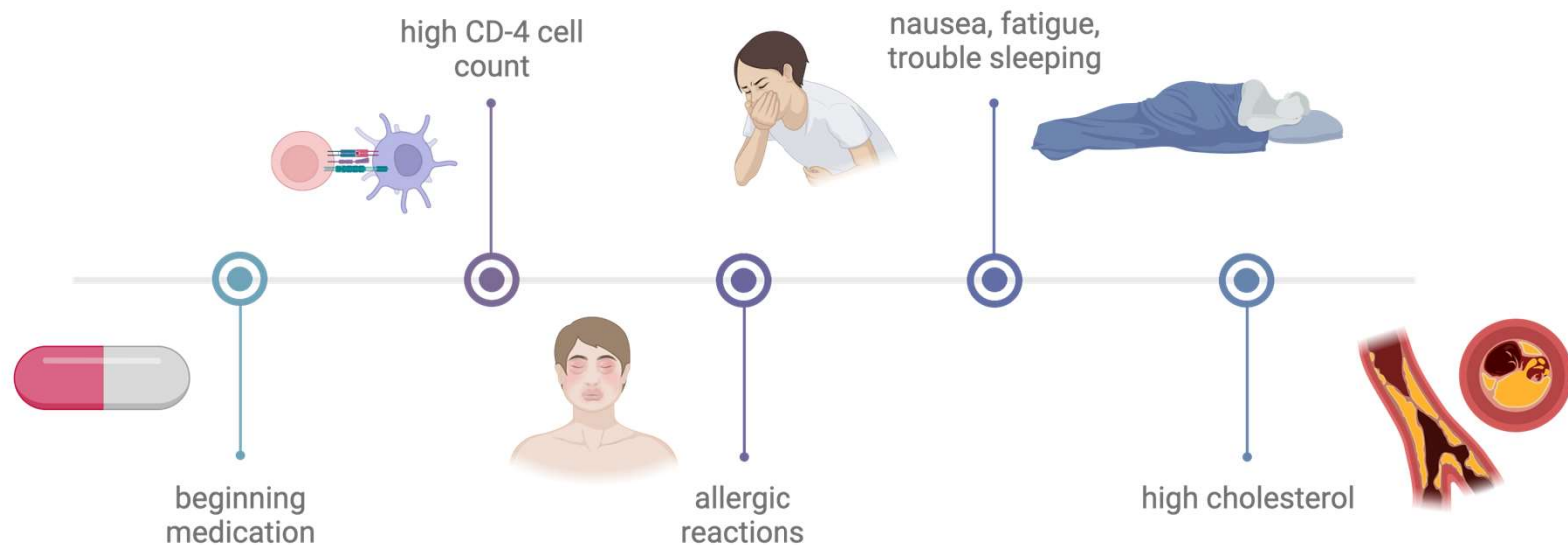
AIDS

- ▶ You **can't "catch" AIDS**, which stands for acquired immunodeficiency syndrome.



Side Effects of Treatment/Medication

- ▶ HIV medications help people with HIV lead longer, healthier lives. AIDS and HIV drug **side effects are also common**.
- ▶ These side effects **range in severity** from mild to life-threatening but can often be prevented or managed.



General Population of Massachusetts

10%

of **Massachusettsans** with HIV are **unaware of their status**, which means they aren't getting the HIV care they need.

"HIV Prevention: Massachusetts - Centers for Disease Control and Prevention." *HIV Prevention to End the HIV Epidemic in the United States*, www.cdc.gov/hiv/pdf/policies/profiles/cdc-hiv-massachusetts-PrEP.pdf.

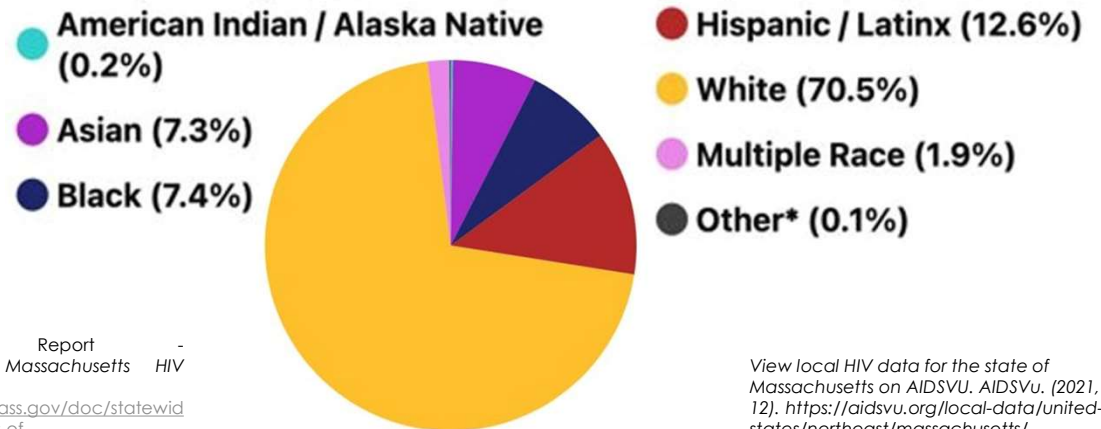
2018-2020

- Boston 364 out of 100,000
- Everett 23.2 out of 100,000
- Lawrence 19.7 out of 100,000
- Lowell 18.9 out of 100,000
- Chelsea 18.9 out of 100,000
- Worcester 93 out of 100,000

"Statewide Report - Mass.Gov." Massachusetts HIV Epidemiologic Profile, www.mass.gov/doc/statewide-report-data-as-of-112022/download.

Total Population
7,022,220

State Population by Race/Ethnicity



View local HIV data for the state of Massachusetts on AIDSVU. AIDSVU. (2021, May 12). <https://aidsvu.org/local-data/united-states/northeast/massachusetts/>

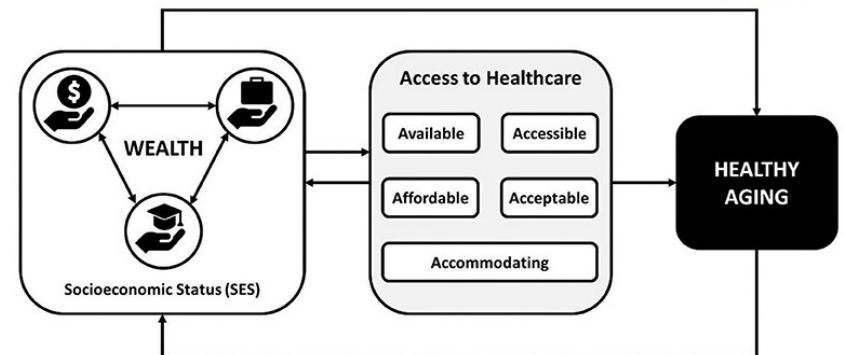
What is a Health Disparity/Inequity?

According to the CDC, health disparities are "**preventable differences in the burden of disease, injury, violence, or opportunities to achieve optimal health that are experienced by socially disadvantaged populations**"



Socioeconomic factors impacting the Hispanic population differing from the general population include:

- Poverty
- Education
- Accessibility
- Economic Stability



McMaughan, Darcy Jones, et al. "Socioeconomic Status and Access to Healthcare: Interrelated Drivers for Healthy Aging." *Frontiers*, 15 May 2020, www.frontiersin.org/articles/10.3389/fpubh.2020.00231/full.

Factors of the Health Disparity

Counties

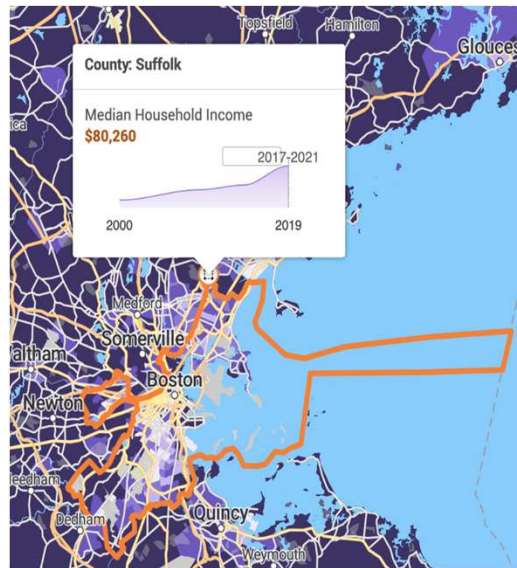
Suffolk, MA

Major Ethnic/Racial Group

Percentages:

- 44.4% = White
- 33.3% = Hispanic

Most HIV Diagnosis from 2018-2021



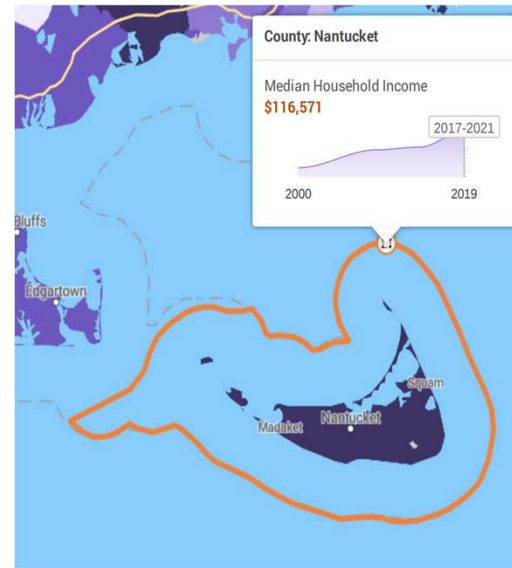
"Dig Deeper." PolicyMap,
[www.policymap.com/newmaps#/.](http://www.policymap.com/newmaps#/)
Accessed 20 June 2023.

Nantucket, MA

Major Ethnic/Racial Group Percentages:

- 84.0% = White
- 15.0% = Hispanic

Decrease HIV Diagnosis from 16% to 7%



"Dig Deeper." PolicyMap,
[www.policymap.com/newmaps#/.](http://www.policymap.com/newmaps#/)
Accessed 20 June 2023.

Low-Income Communities

Residents in Low-Income communities are more **prone to delay treatment**

TABLE 2. Massachusetts cities/towns¹⁴ with the highest percentage of HIV diagnoses among Hispanic/Latino individuals, 2018–2020

	HIV Diagnoses Among Hispanic/Latino Individuals (N)	HIV Diagnoses Among Hispanic/Latino Individuals as Percent of Total HIV Diagnoses (%)
Massachusetts Total	438	27%
Top Cities/Towns		
Chelsea (Suffolk)	17	81%



Lack of Access to Care/Long Periods of Low-Income

=

Increased Risk of Infection for HIV

Cost and Accessibility of Treatment

\$1,800-\$4,500 per month throughout a person's lifetime

▶ Medication Costs

▶ **\$30 - \$9,000 a month**

▶ Rilpivirine (*Edurant*) - **\$1,320**

▶ Emtricitabine/Tenofovir Alafenamide (*Descovy*) - **\$2,530**

▶ Tenofovir Alafenamide Fumarate (*Vemlidy*) - **\$1,269**

▶ Hispanic Median income

▶ Nantucket - \$108,000

▶ Suffolk – \$50,000



Massachusettsans

with HIV will face an average lifetime cost of

\$510,000

to treat their infection
(2020 dollars).

"The Earlier The Better" - Public Education

Nantucket

- ▶ "N/A of students are eligible to participate in the federal free and reduced-price meal program"
- ▶ "Spends **\$23,729** per student each year."
- ▶ "Spends **\$14,495.8 million** on instruction"

Top three schools in the Nantucket:

1. Nantucket Highschool (9-12th grade)
2. Cyrus Pierce Middle school (6-8th grade)
3. Nantucket New School (k-8th grade)



Suffolk

- ▶ "Out of 117,000 people, **29.3%** Hispanic are below the poverty Line"
- ▶ "Spends **\$11,325** per student each year."
- ▶ "Spends **\$7,131.4 million** on instruction"

Top three schools in the Suffolk:

1. Boston Latin Schools (7-12th grade)
2. Boston Latin Academy (6-12th grade)
3. John D. Obryant (7-12th grade)

Lack of Education Poses Risk to Hispanic population

"Hispanic/Latino respondents were more likely to report **having sexual intercourse before age 13** than white (non-Hispanic) respondents."

Within 5-mile to 30-mile radius there is...

- **1** Planned Parenthood in Suffolk County
- **0** Planned Parenthood in Nantucket County



Stigmatization/Misconception

According to the CDC,

▶ **Stigmas:**

- ▶ "Only a certain group of people can get HIV."
- ▶ "People deserve to get HIV because of their choices."

▶ **Misconceptions:**

- ▶ "Only spread through sexual intercourse"
- ▶ "I could tell if my partner was HIV-positive."
- ▶ "If I'm getting treatment, I can't spread the virus."
- ▶ "Now that I have HIV, I can't have kids."



Centers for Disease Control and Prevention. (2021, June 1). *Facts about HIV stigma*. Centers for Disease Control and Prevention. <https://www.cdc.gov/hiv/basics/hiv-stigma/index.html>

Possible Solutions



COST OF TREATMENT
AND ACCESSIBILITY



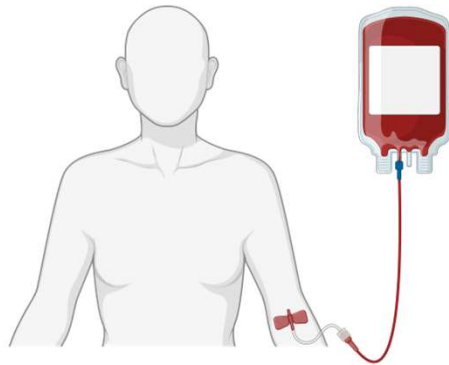
INTERVENTIONS FOR
LOW-INCOME HOUSING



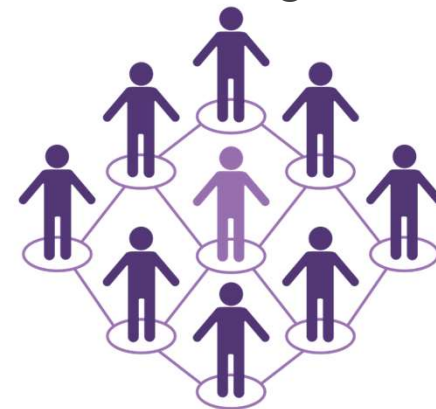
IMPROVING EDUCATION
SYSTEMS

Solution: Cost of Treatment and Accessibility

- ▶ Publicly/State/Federal Funded Counseling, Testing & Referral Sites
 - ▶ Men used these sites more than women
 - ▶ Racial groups made up most individuals using these sites



- ▶ **Health Insurance**
 - ▶ Private, Medicare & Medicaid
- ▶ **Socioeconomic Factors**
 - ▶ Interpreters/Workforce
 - ▶ Services for immigrants and refugees



Solution: Low-Income Housing

A stable housing condition

=

better access to care!

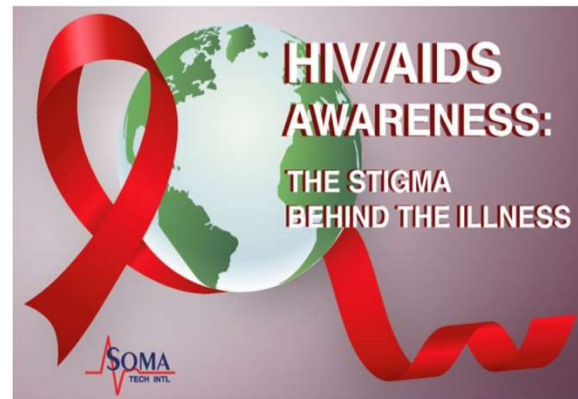
- ▶ State funded rental assistance
- **"Section 8"**
- ▶ Seek out federally government programs dedicated to people with HIV/AIDS !
- "the Housing Opportunities for Persons With AIDS **(HOPWA)** program"

16



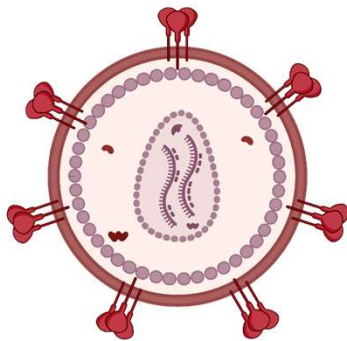
Solution: Improved Education

- ▶ Establishing a **mandate** for schools by the 6th-grade
 - ▶ Students must have taken a sex education and drug awareness class
- ▶ Help **lessen the stigma** around the disease by promoting awareness through flyers and billboards
- ▶ Government programs => **Educate the public** on sex education



Conclusion

- ▶ Hispanic communities are disproportionately affected by HIV and AIDS compared to the general population
- ▶ Reasons for disparity (*Low income and lack of education*)
- ▶ Burdens once diagnosed (*expensive treatment, stigma and side effects*)
- ▶ Possible solutions...



References

- "CDC Bus Stop AD for HIV Testing." *Mind Over Media*, propaganda.mediaeducationlab.com/rate/cdc-bus-stop-ad-hiv-testing.
- "Facts about HIV Stigma." *Centers for Disease Control and Prevention*, 1 June 2021, www.cdc.gov/hiv/basics/hiv-stigma/index.html.
- "Health Disparities." *Centers for Disease Control and Prevention*, 26 May 2023, www.cdc.gov/healthyyouth/disparities/index.htm#:~:text=Health%20disparities%20are%20preventable%20differences,youth%20health%20risk%20behaviors%20persist.
- "HIV and AIDS." *World Health Organization*, 2023, [www.who.int/news-room/fact-sheets/detail/hiv-aids#:~:text=HIV%20is%20spread%20from%20the,with%20antiretroviral%20therapy%20\(ART\)](http://www.who.int/news-room/fact-sheets/detail/hiv-aids#:~:text=HIV%20is%20spread%20from%20the,with%20antiretroviral%20therapy%20(ART)).
- "HIV/AIDS Awareness: The Stigma behind the Illness." *Soma Tech Intl's Blog*, 6 Dec. 2022, www.somatechnology.com/blog/trivia-tuesday/hiv-aids-awareness-the-stigma-behind-the-illness/.
- "HIV/AIDS." *Mayo Clinic*, 29 July 2022, www.mayoclinic.org/diseases-conditions/hiv-aids/symptoms-causes/syc-20373524.
- "How Much Does HIV Treatment Cost?" *WebMD*, www.webmd.com/hiv-aids/hiv-treatment-cost.
- "K-12 Schools in Suffolk County." *Niche*, www.niche.com/k12/search/best-schools/c/suffolk-county-ma/?gradeLevel=high&type=traditional.
- Massachusetts Integrated HIV/AIDS Prevention and Care Plan*, www.mass.gov/doc/massachusetts-integrated-hiv-prevention-and-care-plan-2/download.
- McMaughan, Darcy Jones, et al. "Socioeconomic Status and Access to Healthcare: Interrelated Drivers for Healthy Aging." *Frontiers*, 15 May 2020, www.frontiersin.org/articles/10.3389/fpubh.2020.00231/full.
- Nall, Rachel. "How Much Does HIV Treatment Cost?" *Healthline*, 20 June 2022, www.healthline.com/health/hiv-aids/cost-of-treatment#current-drug-costs.
- Nantucket - U.S. News Education*, www.usnews.com/education/k12/massachusetts/districts/nantucket-111364.
- Parenthood, Planned. "Find A Health Center." *Planned Parenthood*, www.plannedparenthood.org/health-center?location=suffolk%2C%2BMA&service=&channel=any&distance=15&page=1.
- "Policy Map." *Umassmed*, umassmed-policymap-com.umassmed.idm.oclc.org/newmaps#.
- "Poverty Rate in Suffolk County, Massachusetts." *18.7% Poverty Rate in Suffolk County, Massachusetts*, www.welfareinfo.org/poverty-rate/massachusetts/suffolk-county/.
- Suffolk City Public Schools - U.S. News Education*, www.usnews.com/education/k12/virginia/districts/suffolk-city-pblc-schs-103885. Accessed 14 June 2023.

References

- "Suffolk County Massachusetts Demographics Data." *Towncharts Demographics Data*, www.towncharts.com/Massachusetts/Demographics/Suffolk-County-MA-Demographics-data.html.
- View local HIV data for the state of Massachusetts on AIDSVU. AIDSVU. (2021, May 12). <https://aidsvu.org/local-data/united-states/northeast/massachusetts/>
- "Economically Disadvantaged." *Centers for Disease Control and Prevention*, 11 Dec. 2019, www.cdc.gov/hiv/group/poverty.html.
- "HIV/AIDS and Socioeconomic Status." *American Psychological Association*, www.apa.org/pi/ses/resources/publications/hiv-aids.
- "Statewide Report - Mass.Gov." *Massachusetts HIV Epidemiologic Profile*, www.mass.gov/doc/statewide-report-data-as-of-112022/download.
- "Massachusetts HIV Epidemiologic Profile: Data as of 1/1/2022 ..." *Massachusetts HIV Epidemiologic Profile*, www.mass.gov/doc/racial-and-ethnic-minorities-data-as-of-112022-accessible-version/download.