

Striving for Impact

Designing the Community-Academic Research Dissemination Process to Foster Equity

January 29, 2024

Sarah L. Goff, MD, PhD

Kathleen Szegda, PhD, MS, MPH

Project ACCCES



PUBLIC HEALTH INSTITUTE
OF WESTERN MASSACHUSETTS
PARTNERS FOR HEALTH EQUITY

UMass
Amherst

WELCOME



PUBLIC HEALTH INSTITUTE
OF WESTERN MASSACHUSETTS
PARTNERS FOR HEALTH EQUITY

UMass
Amherst

Introductions

Please share in chat:

- Your name/pronouns
- Your organization
- Focus of your research



PUBLIC HEALTH INSTITUTE
OF WESTERN MASSACHUSETTS
PARTNERS FOR HEALTH EQUITY

UMass
Amherst

Workshop Goals

Learn and share approaches to:

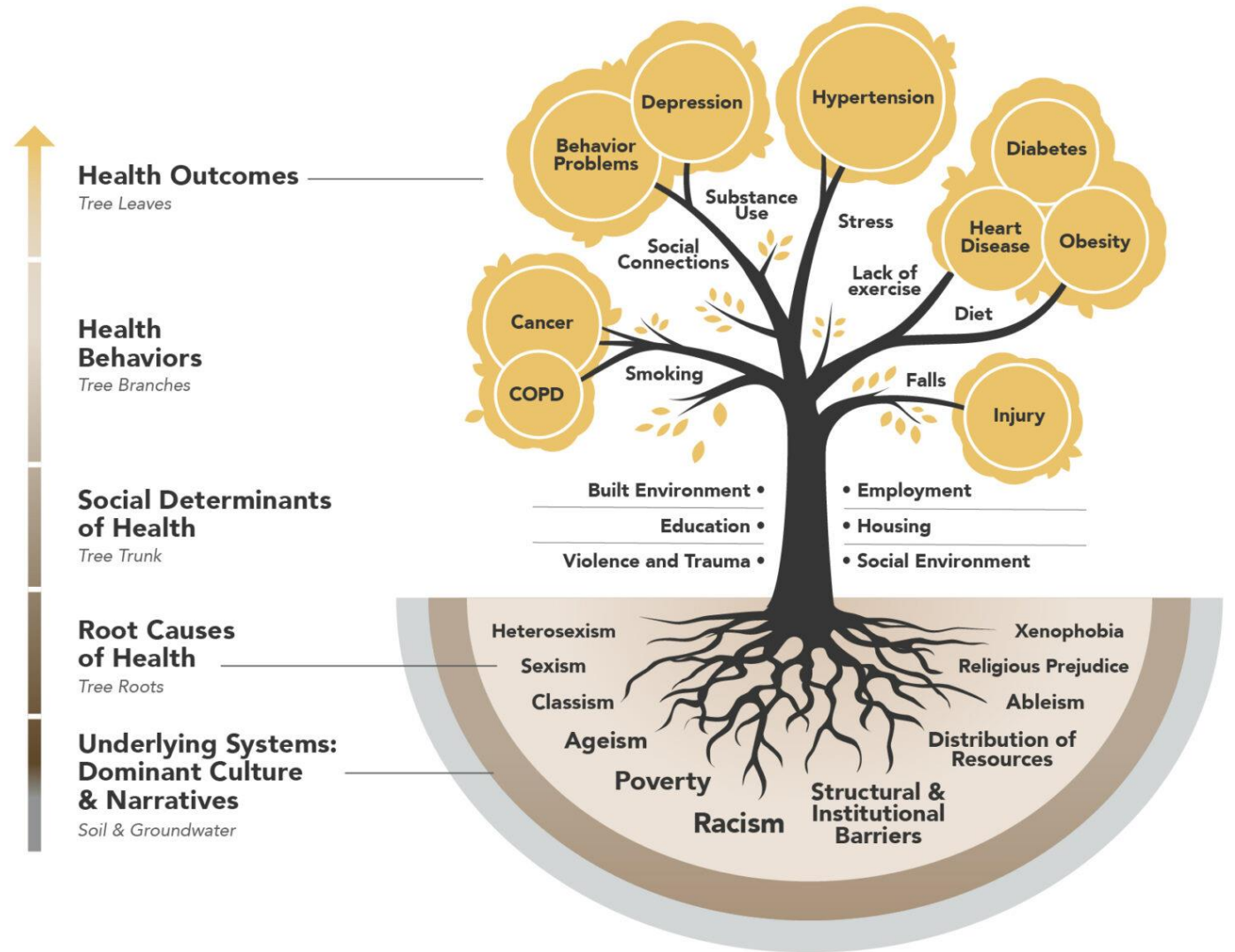
- Disseminating research results with equity in mind
- Considering **power, voice, and engagement** in creating an equitable dissemination process
- Using an equitable dissemination process to **drive action**



Core Values

Health Equity

Racial Justice



Source: The Health EquiTREE (2022), illustration by Health Resources in Action for the Massachusetts Community Health and Healthy Aging Funds. <https://mahealthfunds.org/resources/>



PUBLIC HEALTH INSTITUTE
OF WESTERN MASSACHUSETTS
PARTNERS FOR HEALTH EQUITY

UMass
Amherst

Process

Be intentional
about the process

Engagement
Power
Voice



Equity



PUBLIC HEALTH INSTITUTE
OF WESTERN MASSACHUSETTS
PARTNERS FOR HEALTH EQUITY

UMass
Amherst

Spectrum of Engagement

"I felt like I was actually making a difference for my fellow dialysis patients and that my being [on the advisory board] actually made the study better. It was transformative."

Traditional
Research

Increasing Levels of Engagement and Equity

CBPR



Provide information



Obtain community perspectives



Work with community ensure concerns & aspirations considered



Partner with community



Decision-making in community hands

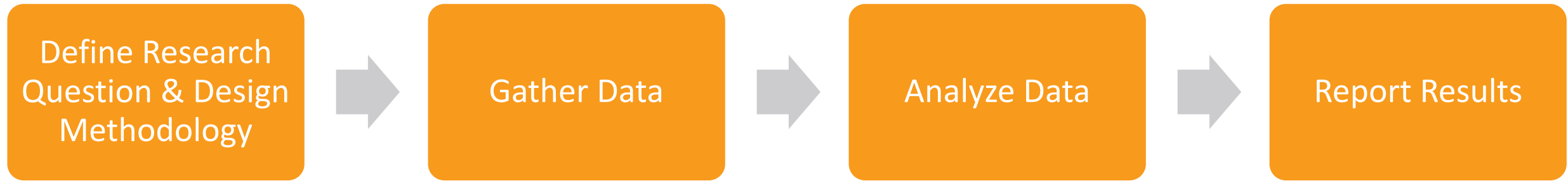
Community Driven / Led



Support community led projects

Dissemination in Community-Engaged Research

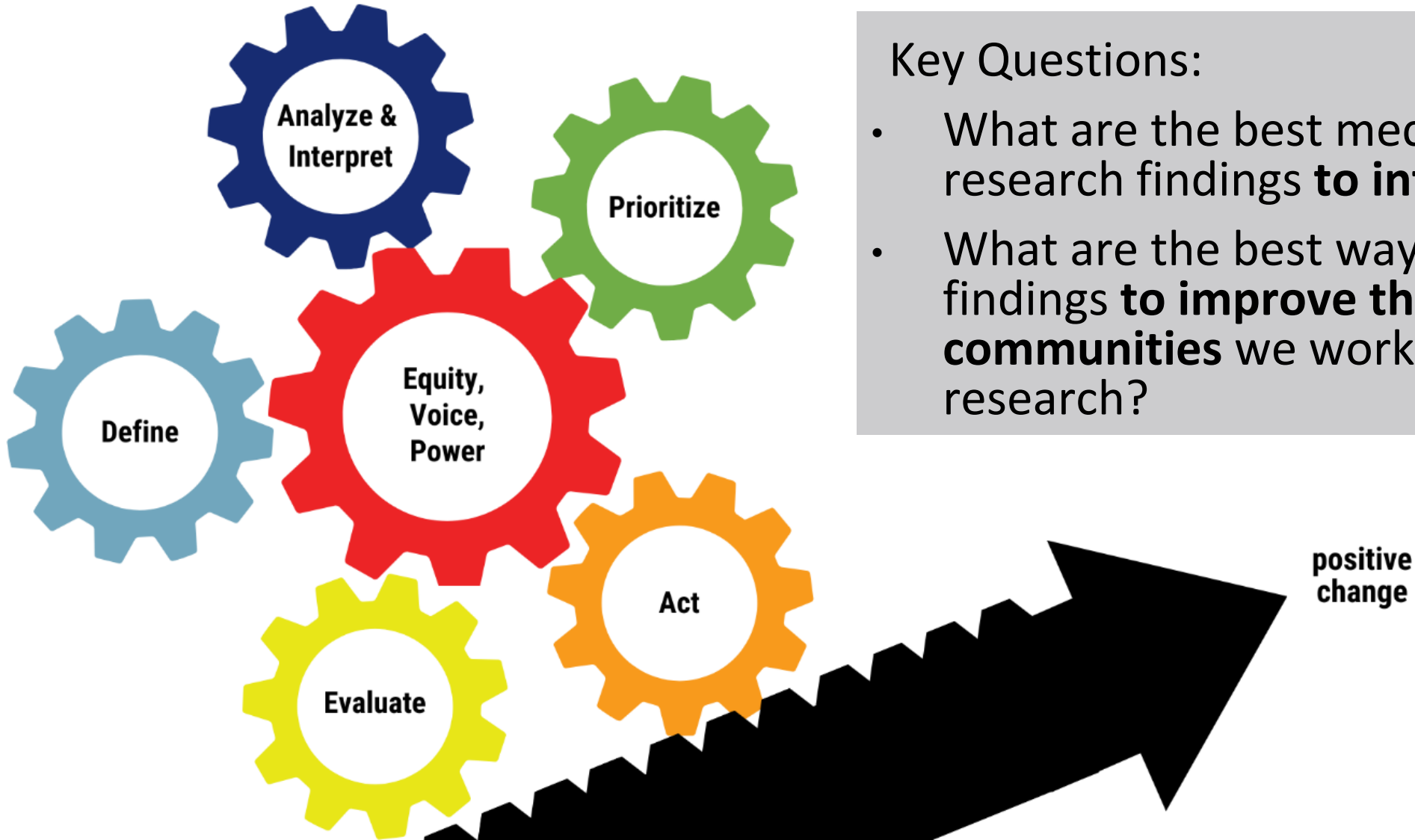
Research Process



A low-angle, upward-looking photograph of several modern skyscrapers with glass facades. The buildings are arranged in a way that creates a strong sense of height and perspective, converging towards the top of the frame. The sky is a vibrant blue, filled with wispy white clouds. In the foreground, the tops of black streetlights are visible, adding to the urban atmosphere. The overall composition is clean and professional, suitable for a corporate or motivational presentation.

Expand Perspective

Using Data to Action Model



Key Questions:

- What are the best mechanisms to share research findings **to inform the field**?
- What are the best ways to share research findings **to improve the local communities** we worked with for the research?

Benefits of Dissemination through Equity Lens

- Ensures research process mutually beneficial
- Builds relationship and trust in research partnership – supports co-ownership of process
- Groundtruthing and/or vetting and contextualizing findings
- Supports action in the community



Panel Discussion



Samantha Hamilton
LiveWell Springfield
PHIWM



Kathleen Szegda
PHIWM



Ms. Sancha Rai
Bhutanese Christian
Society of Western
Massachusetts



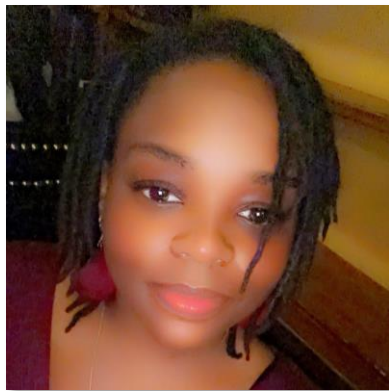
Krishna Poudel
UMass Amherst



**Kalpana Poudel-
Tanduker**
UMass Amherst



Casey Burns
Coalition for a Healthy
Greater Worcester



Ms. Chantel
Coalition for a Healthy
Greater Worcester



Larissa Calancie
Tufts University

A close-up photograph of a tabby cat in a stretching pose. The cat is lying on its side on a grey gravel surface, with its front legs extended forward and its hind legs tucked under. The cat's fur is a mix of brown, black, and tan stripes. The background is a blurred outdoor setting with a blue sky and some greenery. The text "Stretch Break" is overlaid in the center of the image in a white, bold, sans-serif font.

Stretch Break

Dissemination Using Equity Approach

Framing Findings & Messages

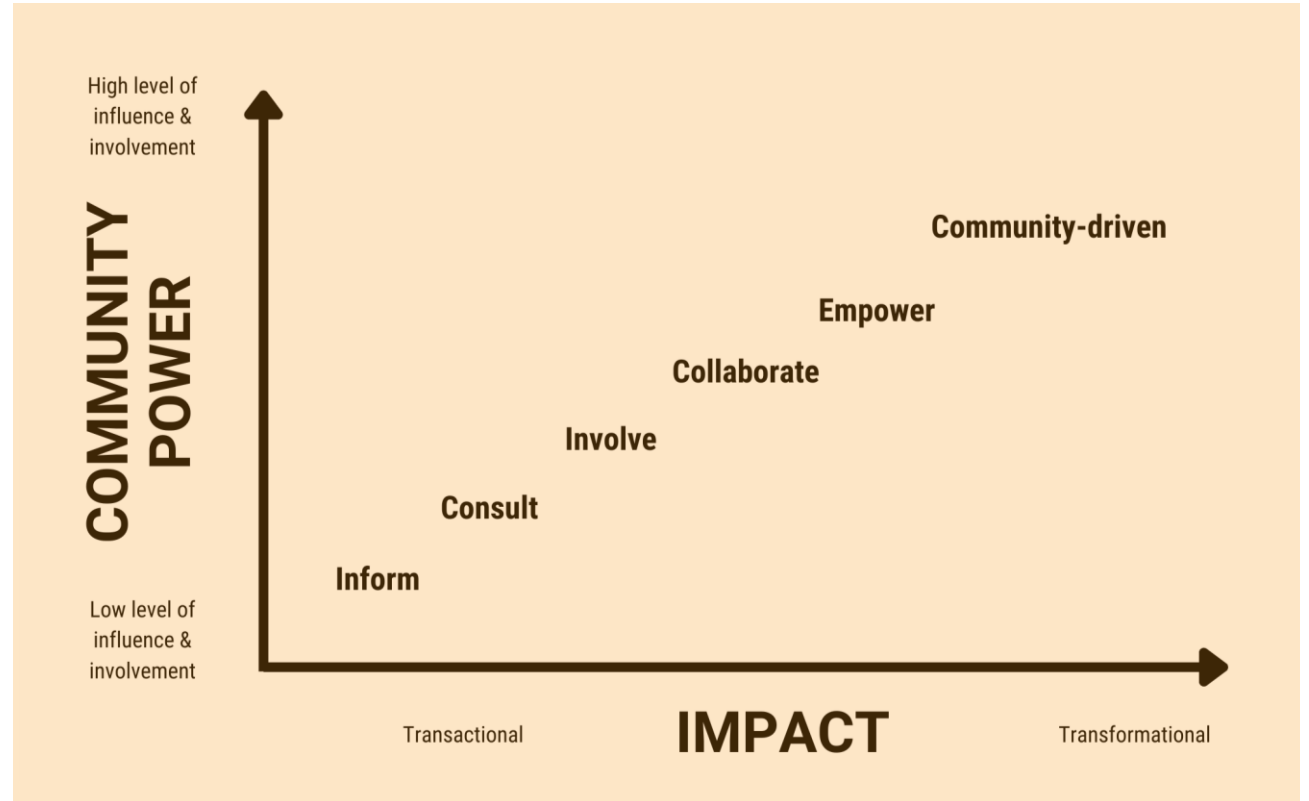
- Asset based
- Frame as people
- Incorporate historical oppression and inequitable systems as context
- Be cautious about perpetuating stereotypes through data and findings
- Foster buy-in and promote action
 - Accessible to target audience
 - Connect to hope and possibility

Framing
Matters!



Community Voice and Power in Disseminating Results

- Identifying how results can support community
- Build partner capacity to share findings
- Support using it for action



Source: Adapted from Health Equity Solutions ([Transformational Community Engagement to Advance Health Equity \(rwjf.org\)](#)) and MDPH Spectrum of Engagement

Dissemination Products/Methods



- Who is the audience?
 - Scholars, practitioners, general public?
- What products will engage them and be accessible?
- What are your key messages?
- What actions would you like them to take?



Small Group Discussion Prompts

- Introductions
- What are your interests/areas of work?
- What resonated with you from the panel? What did you want to learn more about?
- How have you thought about and tried to incorporate equity in dissemination? Whose job is it to do that?
- How might you apply equitable dissemination in your future work?



Large Group Share

What stood out to you in your small group discussions?



PUBLIC HEALTH INSTITUTE
OF WESTERN MASSACHUSETTS
PARTNERS FOR HEALTH EQUITY

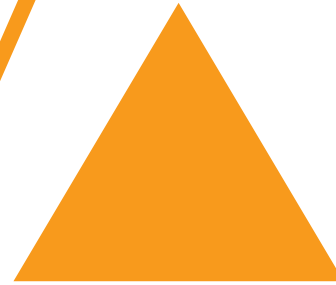
UMass
Amherst

Wrap Up

What worked well?



What would you change?



Thank you!



**PUBLIC HEALTH INSTITUTE
OF WESTERN MASSACHUSETTS**
PARTNERS FOR HEALTH EQUITY

UMass
Amherst