

Stakeholder Engagement through Participatory Action Research at iSPARC

Melissa Anderson, Deirdre Logan, Celine Larkin
 University of Massachusetts Medical School

Established in 2018, the Implementation Science & Practice Advances Research Center (iSPARC) is a Massachusetts DMH-funded collaborative effort between the former UMMS Systems and Psychosocial Advances Research Center, UMMS Population & Quantitative Health Sciences and Boston University's Center for Psychiatric Rehabilitation. With 51 core and associate investigators, iSPARC features four interacting programs: Stakeholder Engagement, Public Mental Health and Implementation Research, Technical Assistance/Consultation and External Funding, and Workforce Enrichment.

The mission of the **Stakeholder Engagement Program** is to lead the mental health research community and beyond in working in partnership with individuals with lived mental health experience, their families, and the agencies that serve them. This program intersects with several of iSPARC's activities. It includes three active advisory groups with more than 20 members representing youth & young adults with lived mental health experience, adults (>30 years) with lived mental health experience, and family members. These advisory groups are part of a participatory action research (PAR) approach and seek to engage community stakeholders at every stage of research, from development through enrollment and dissemination.

The iSPARC Stakeholder Engagement Program seeks to increase engagement and diversity through several initiatives:

- Development of a community provider advisory board
- Annual assessment of diversity representation on advisory boards
- Annual assessment of participation action research across all iSPARC projects
- Ongoing dissemination of products to assist other organizations in initiating and maintaining stakeholder engagement

Conducting an annual diversity survey of our existing advisory groups

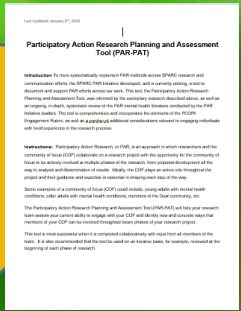
Results (n=13)		
	2019	2020
Diverse...	n=14	n=13
Ethnicity?	7%	8%
Race?	29%	23%
Language?	0%	0%
Gender?	64%	69%
Sexual orientation?	36%	8%
Disability?	50%	15%
Personal MHC?	79%	46%
Family MHC?	77%	85%

MHC= mental health condition

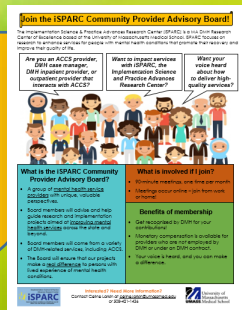
Developing dissemination products around stakeholder engagement



Measuring and supporting participatory approaches in existing studies



Establishing a new community provider advisory board



Celine.larkin@umassmed.edu