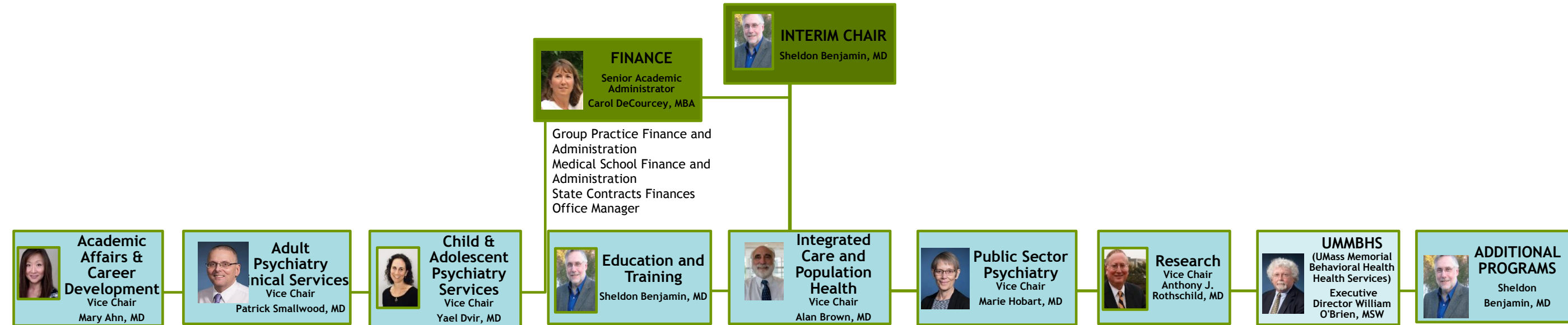


University of Massachusetts Medical School/UMass Memorial Health Care  
 Department of Psychiatry Organizational Chart - October 9, 2018



**FINANCE**  
 Senior Academic Administrator  
 Carol DeCoursey, MBA

Group Practice Finance and Administration  
 Medical School Finance and Administration  
 State Contracts Finances  
 Office Manager

**Academic Affairs & Career Development**  
 Vice Chair  
 Mary Ahn, MD

**Adult Psychiatry Services**  
 Vice Chair  
 Patrick Smallwood, MD

**Child & Adolescent Psychiatry Services**  
 Vice Chair  
 Yael Dvir, MD

**Education and Training**  
 Sheldon Benjamin, MD

**Integrated Care and Population Health**  
 Vice Chair  
 Alan Brown, MD

**Public Sector Psychiatry**  
 Vice Chair  
 Marie Hobart, MD

**Research**  
 Vice Chair  
 Anthony J. Rothschild, MD

**UMMBHS**  
 (UMass Memorial Behavioral Health Services)  
 Executive Director William O'Brien, MSW

**ADDITIONAL PROGRAMS**  
 Sheldon Benjamin, MD

- Academic Affairs Support
- CDRO (Career Development & Research Office)
- Faculty Career & Educational Development
- Faculty/Staff Onboarding
- Leadership & Career Coaching
- Psychiatry Communications
- Staff Career & Educational Development
- Wellness Initiative
- Women's Faculty Committee

- Addiction Consultation/Liaison Service
- Adult Consultation/Liaison Service
- EMHS (Emergency Mental Health Service)
- Health Psychology
- Marlborough Hospital/Member Hospital
- PTRC (Psychiatric Treatment & Research Center) Inpatient Service
- 8 East Inpatient Service
- Neuropsychology
- Outpatient Services Specialty Clinics (Neuropsychiatry, Mood Disorders, Addiction, Psychotic Disorders, McPAP for Moms)
- TaraVista Behavioral Health Center (Affiliate Contract)
- Psychology Network
- Quality Director
- TMS/ECT Service (Transcranial Magnetic Stimulation/ Electroconvulsive Therapy)
- Women's Mental Health

- Adolescent Inpatient Units
- The Bridge of Central MA
- CANDO**
- Child & Adolescent Consultation/Liaison Service/Emergency Mental Health Services
- Child Trauma Training Center
- CHL (Community Healthlink, Inc.)
- Community Child Psychiatry
- DCF (Dept of Children & Families Consultant)**
- DYS (Dept of Youth Services)
- FaCES (Foster Children's Evaluations Services)**
- McPAP (MA Child Psychiatry Access Project)
- Reliant Integrated Care
- YOU, Inc., Training Contract**

- Adult Psychiatry Residency Training
- Addiction Fellowship
- Child & Adolescent Psychiatry Fellowship
- College Mental Health Training
- Forensic Fellowship
- High School Outreach/Brain Bee
- Psychology Internship Program
- Forensic Psychology Post-Doc Training
- Medical Student Brain Course
- Medical Student Clerkship
- Neuropsychiatry Fellowship
- Pharmacology Fellowship
- Psychiatry Grand Rounds

- Clinton Hospital/Member Hospital
- College Mental Health Clinical Services (Private Contract)
- Community Healthlink, Inc. (Affiliate Contract)
- Embedded Psychiatry
- Health Alliance/Member Hospital
- House Officer Counseling
- Integrative Programs
- Student Counseling Service

- SouthEast Medical Directors
- UMMS/ Department of Mental Health Area Medical Directors
- WRCH (Worcester Recovery Center & Hospital)

- Addictions Psychiatry Division
- Genetics/Genomics Researchers
- CCNI (Center for Comparative Neuroimaging)
- Center for Psychopharmacologic Research and Treatment
- Center for Excellence in Addiction
- iSPARC (Implementation Science and Practice Advances Research Center)
- Psychosis Disorders Research
- TMS-ECT (Transcranial Magnetic Stimulation/ Electroconvulsive Therapy)**
- UMass Depression Center
- Women's Mental Health**

- IDS (Intellectual Disabilities Services) Integrative Programs
- Public Safety Training

- BNRI (Brudnick Neuropsychiatric Research Institute)**
- China Mental Health Program
- Center of Excellence in Specialty Courts
- Eunice K Shriver Center**  
 - CANDI  
 - CANDO
- Law & Psychiatry Program
- Veterans Administration Research and Development

**KEY**  
 Programs include Psychiatry faculty with non-Psychiatry funding  
 Indicates joint reporting