

Weekly Newsletter April 3-7, 2023

## PQHS NEWS

### UPCOMING EVENT

**Tuesday, April 4 – 9:00 – 10:00 AM**

**Research Meeting – Presenter:** Chengwu Yang, MD, MS, PhD, Associate Professor, Division of Biostatistics and Health Services Research, PQHS, UMass Chan Medical School

**Title:** Less is More: Why do more than half items in the most popular oral health-related quality of life (OHQoL) measure need to be deleted for more meaningful use?

**Brief Description:** Among the eight major OHQoL measures, the 14-item version of the Oral Health Impact Profile (OHIP-14) is the most widely used. Our recent work modified this measure into MOHIP-14 (Yang et al., 2022). Although improved, it still has suboptimal items and is burdensome for efficient routine clinic use due to its length. Thus, we set forth to further shorten and validate it. And we found that only 4 of the 14 items had a correlation coefficient with overall oral health greater than 0.20, i.e., are truly “oral health related. Factor analyses indicated that all 4 items were measuring a single construct, and the Cronbach’s alpha is 0.69. We named this much shorter version the MOHIP-4P. The new MOHIP-4P score is more closely correlated with overall oral health, with a correlation coefficient of 0.31, compared to the average of 0.19 from the 7 original OHIP-14-dimension scores, which is a 63% improvement. Since 2004, my team and I have been detecting and correcting similar issues in other popular measures, such as the Repeatable Battery for Assessment of Neuropsychological Status (RBANS) (Yang et al., 2009), and the Hamilton Rating Scale for Depression (HRSD) (Yang & Zhao 2012), etc. In this talk, I will briefly demonstrate why “less is more” for many popular measures in health sciences, using these 3 as examples, with the goal of “proving” the well-known claim of “few of the measures...have been 'professionally developed' ” [Teresi & Fleishman, Qual Life Res, 2007]”, and of “necessitating” the establishment of the Measurement & Outcome Section (MOS, born on March 6, 2021) within our Division of Biostatistics and Health Services Research in our PQHS Department at our UMass Chan Medical School.

Click [here](#) to join or call 646 876 9923 Meeting ID: 851 294 7151 **password: smm2020**



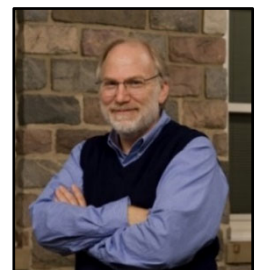
**Thursday, April 6, 2:00-3:00 PM**

**Tea Time** will be hosted by QMC, with a Spring Time Theme. Please stop by to say hello and have a cup of tea.

### ANNOUNCEMENTS

**Monday, April 3, at 12:00 – 1:00 PM**

**Rigor and Reproducibility Seminar: “Sharing Confidential and Sensitive Data?”** presented by [George Alter, PhD](#), Research Professor Emeritus with the Institute for Social Research at the University of Michigan. Dr. Alter’s research integrates theory and methods from demography, economics, and family history with historical sources to understand demographic behaviors in the past. From 2007 to 2016, Alter was Director of the Inter-university Consortium for Political and Social Research, the world’s largest archive of social science data, and he is a past president of the Social Science History Association. He has been active in international efforts to promote research transparency, data sharing, and secure access to confidential research data. He is currently engaged in projects to create FAIR vocabularies in population research, to automate the capture of metadata from statistical analysis software, and to compare fertility transitions in contemporary and historical populations. This seminar is given jointly by the UMass Chan Medical School Population & Quantitative Health Sciences, and UMass Boston Gerontology Department and Gerontology Institute. **Click this [link](#) to join the ZOOM presentation; password: 468880.**



**Transdisciplinary Training in Cardiovascular Research T32 Training Program** - now accepting applications for pre-and post-doctoral trainees. In collaboration with the Division of Cardiovascular Medicine, the Department of Population and Quantitative Health Sciences (PQHS) has established a NHLBI-funded T32 program with the aim of producing a new generation of investigators who have the enthusiasm, knowledge, and skills to make meaningful contributions to cardiovascular research across the translational spectrum. Directed by Catarina Kiefe, MD, PhD (PQHS) and Kevin Donahue, MD (Cardiovascular Medicine), the program is truly transdisciplinary, with investigators working together to expand knowledge beyond discipline-based concepts, theories, and methods. Please see the attached flyer for more information on eligibility and how to apply.



**The Regenstrief Center for Health Services Research Presents - Hiring, Engaging, and Retaining High Performing Research Staff Professionals: A 2-Part Virtual Conference for Faculty and Leaders of Research Teams**

Please visit the event website for the [full agenda with speaker and chair bios](#).

**Part 1: Friday, April 21, 2023, 11:00 AM – 4:15 PM (EDT)**

- Developing Highly Engaged Teams in Today's Changing Workplaces, **Brian J. Brim, MA, EdD**, Principal at Gallup
- Creating & Managing the Most Excellent and Efficient Research Teams, **Marie Anne Bakitas, DNSc, NP-C, FPCN, FAAN**, University of Alabama at Birmingham
- Empowering Research Staff Using a Coaching Conversation Framework, **J. Nicholas Dionne-Odom, PhD, RN, ACHPN, FPCN, FAAN**, University of Alabama at Birmingham

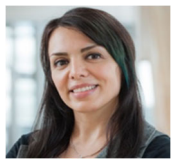
**Part 2: Monday, April 24, 2023, 11:00 AM – 2:45 PM (EDT)**

- Changing the Clinical Research Professional Landscape, **Denise C. Snyder, MS, RD, LDN**, Duke University
- Learning from Highly Effective Career Research Professionals
  - **Aquila Brown-Galvan, BS, MPH**, University of Alabama at Birmingham
  - **Curt Austin, BFA, BS, MDiv**, VA HSR&D Center for Health Information & Communication
  - **Diane Bresch, RN, BSN, CCRC**, Duke Office of Clinical Research
  - **Brie Sullivan, MS, PMP**, Fred Hutchinson Cancer Center

[Click to register](#). Following completion of registration, you will receive an automated confirmation message followed by separate Outlook invitation with Zoom information.

[Visit event website for more details](#)

Event or Registration Questions: [llosee@regenstrief.org](mailto:llosee@regenstrief.org)



**Monday, May 8, 2023**

**UMCCTS Workshop, "Data Visualization for Effective Science Communication with Diverse Audiences"**. Participants will learn about various approaches to visualizing scientific findings and data for effective communication with diverse audiences. Focus will

be on both key principles of effective data visualization as well as concrete skill-building amongst participants. [Narges Mahyar, PhD](#), and [Ali Sarvghad Batn Moghaddam, PhD](#) will be speakers at the workshop.



Registration is required. Click [here](#) to register.



Center for Clinical and Translational  
Science



UMass Chan  
MEDICAL SCHOOL

## FUNDING REMINDERS

**Revised NSF Biographical Sketch and Current and Pending (Other) Support Formats - Now Available in SciENcv and on the NSF Website:** NSF implemented revised versions of the [Biographical Sketch](#) and [Current and Pending \(Other\) Support](#) formats for consistency with the *Proposal and Award Policies and Procedures Guide (PAPPG)* ([NSF 23-1](#)). The requirement to use the revised formats is effective for proposals submitted or **due on or after January 30, 2023**.

These revised formats are now available in [SciENcv](#) and on the [NSF Policy Office website](#). As a reminder, the mandate to use SciENcv only for preparation of these senior personnel documents will go into effect for new proposals submitted or **due on or after October 23, 2023**.



### THE 2023 DIVERSITY ENGAGEMENT SURVEY is NOW LIVE!

We are excited to announce that the [2023 Diversity Engagement Survey is now live](#). This institution-wide survey represents an effort to assess and respond to the needs of our community members. Data collected will assist us in identifying actions that will allow us to become a more equitable and inclusive institution. By responding to the survey, you will help us develop new resources and policies, as well as help us monitor whether we are making progress on our diversity, equity, and inclusion strategic goals. This is a major goal of our Impact 2025 Diversity, Equity, and Inclusion pillar.

You may access the survey in your web browser by clicking here: [Diversity Engagement Survey](#)

Your participation in this survey is voluntary. The survey is expected to take approximately 10 minutes to complete. Once completed, you can enter your name for a chance to win a variety of great prizes!

Please be assured that no identifying information will be collected and that the data you provide is confidential. The results of any analysis using this data will be presented in a way that individual respondents cannot be identified. All reports of the findings will be aggregated in nature.

While your participation in this confidential survey is voluntary, I hope that you will take the time to share your perspective and experiences. It is our goal to have as many learners, faculty, and staff as possible from all backgrounds share their experiences so that we have the most representative data and can develop programs, policies and initiatives that are responsive to our community's concerns and needs.

If you have any questions about the survey, please do not hesitate to email the Diversity and Inclusion Office at [diversity@umassmed.edu](mailto:diversity@umassmed.edu)

Thank you in advance for helping us work toward making UMass Chan a more diverse, equitable and inclusive community! We look forward to hearing from you and hope you know that your input makes an impact.

### MASS CHAN REMINDER



UMass Chan Medical School's [Office of Communications](#) is initiating regularly scheduled opportunities where faculty, staff, and students can have a professional headshot taken. Photos are taken every other Wednesday from 9 AM to 3 PM on the fifth floor of the Sherman Center by the elevators. Each session caps at 50 people. Anyone at UMass Chan can sign up using this document found on the SharePoint site. See updated link for new options: [Photo Sign-Ups \(office365.com\)](#)

*PQHS Weekly will be sent to all members of PQHS on Monday mornings. The intent is to provide a snapshot of what is going on that week in PQHS and to share our faculty and staff activities with the department. We depend on you to provide the items we need to share. Please send suggestions of events, faculty invited seminars & talks, honors, student thesis presentations, and news – new babies born! – to Kellie ([kellie.armstrong@umassmed.edu](mailto:kellie.armstrong@umassmed.edu)) & Sarah ([sarah.yeboah@umassmed.edu](mailto:sarah.yeboah@umassmed.edu)) by Friday each week.*