

Research Administration Update



Wednesday, May 30, 2018

Lazare Auditorium (S1-607)

1:00 pm

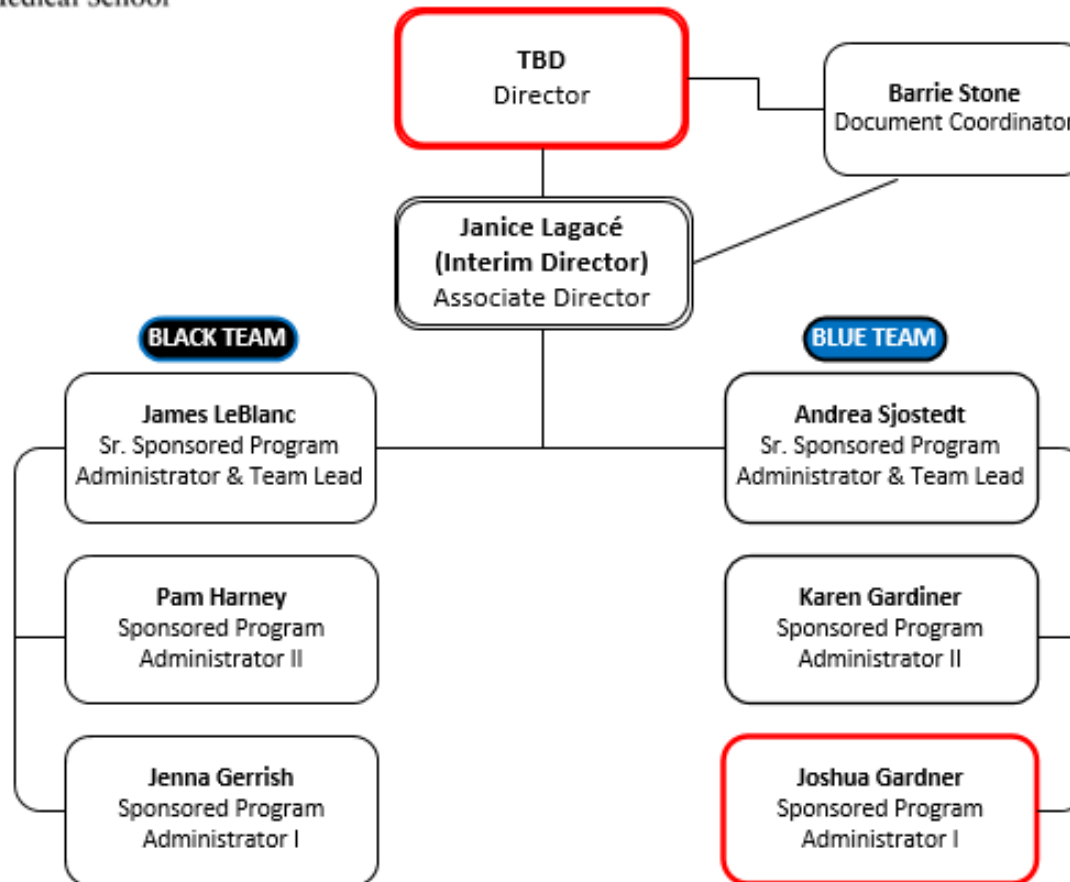


Agenda

- OSP Updates
 - OSP Staffing Changes
 - Website updates
 - Application Review
- NIH Updates
 - NOT-OD-18-172
 - NOT-OD-18-175
 - NOT-OD-18-179
 - NOT-OD-18-180
- Proposal Statistics

OSP Updates – Org Chart

Office of Sponsored Programs



OSP Updates - Website

Graduate Student Stipends and Fees

Effective July 1, 2018 the Graduate Student stipend is \$31,850.

GSBS Ph.D. & MD/Ph.D.* Fees, Tuition and Insurance (FY2018)

Health Insurance	\$4,358	Tuition**	\$3,890
Dental Insurance	\$335.00	Program Fee†	\$200.00
Vision Insurance	\$185.00	Student Services Fee	\$195.00
		Health/Counseling Fee	\$836.00
		Career Development Fee	\$400.00
Total Insurance	\$4,878.00	Total Fees	\$5,521.00

*MD/Ph.D. student fees change when the student completes GSBS studies and moves to the School of Medicine. Please consult the Bursar's Office for individual student fee schedules.

**Assessed until the Ph.D. student has completed nine semesters in Ph.D. studies, or six semesters of Ph.D. studies for MD/Ph.D. students.

†Assessed after the Ph.D. student has completed nine semesters of in Ph.D. studies, or six semesters of Ph.D. studies for MD/Ph.D. students.

Edited 5/17/2018 BSS

OSP Updates - Website



Sponsored Programs

[Home](#)[Basic Research](#)[Clinical Research](#)[Sponsored Programs](#)[Compliance](#)[Research Cores](#)[UMass Voucher Program](#)[Faculty](#)[Publications](#)[Fact Sheet](#)[Forms](#)[Research Policies & Procedures](#)[Funding Opportunities](#)[Electronic Research Administration](#)[NIH Proposal Information](#)[New Investigator Requirements](#)[Contracts and Subcontracts](#)[Post-Award Administration](#)[Post-Award Fiscal Information](#)[Grant Transfers](#)[Research Administration Updates](#)[Limited Submissions](#)[Contact Us](#)

NIH Proposal Information

Most NIH funding mechanisms are now electronic with a few notable exceptions. For electronic applications, please see the [Electronic Submission](#) page.

For paper-based applications please use these partially completed pages:

[PHS398 Face page for new and competing Grant Applications](#)

[PHS398 Checklist Page](#)

[PHS2590 Face page for Grant Progress Report](#)

[PHS2590 Checklist Page for Grant Progress Report](#)

[NIH Table of Page Limits](#)

[NIH Forms & Applications](#)

[FY2018 NRSA Kirschstein individual fellowship stipends, tuition/fees and other budgetary information](#)

- Encourage your PI to enter the eRA Commons and review the assembled application
- Applications can be rejected and resubmitted with corrections prior to the deadline
- The two day review is only applicable if you are two days prior to the deadline
- Any application that is rejected at grants.gov will send an alert to the Research.Funding mailbox

NOT-OD-18-172

Policy Regarding a Change in Program Director's/Principal Investigator's Status

- Prior approval policy for changes in the status of PIs and senior/key personnel
- PD/PI's withdrawal from the project
- An absence for a continuous period of 3 months or more
- Reduction in time devoted to the project by 25 percent or more

NOT-OD-18-175

- Ruth L. Kirschstein National Research Service Awards (NRSA) FY2018 level adjustments to:
Stipends/Tuition & Fees/Training
Expenses/Institutional Allowances
- NIH will increase NRSA stipends by approximately 2 percent on average.
- Our website has been update for the following link
<https://grants.nih.gov/grants/guide/notice-files/NOT-OD-18-175.html>

NOT-OD-18-175 Stipends

- Effects all Kirschstein-NRSA awards made on or after October 1, 2017.
- All FY 2018 previously awarded will be revised to adjust funding to the FY 2018 levels.

NOT-OD-18-175 Stipends

Predoctoral Trainees and Fellows: For institutional training grants (T32, T35, T90, TL1) and individual fellowships (F30, F31), one stipend level is used for all predoctoral candidates, regardless of the level of experience:

Career Level	Years of Experience	Stipend for FY 2018	Monthly Stipend
Predoctoral	All	\$24,324	\$2,027

NOT-OD-18-175 Stipends

Postdoctoral Trainees and Fellows: For institutional training grants, (T32, T90, TL1) and individual fellowships (F32), the stipend level for the entire first year of support is determined by the number of full years of relevant postdoctoral experience :

Career Level	Years of Experience	Stipend for FY 2018	Monthly Stipend
Postdoctoral	0	\$48,432	\$4,036
	1	\$48,804	\$4,067
	2	\$49,188	\$4,099
	3	\$51,324	\$4,277
	4	\$53,184	\$4,432
	5	\$55,308	\$4,609
	6	\$57,528	\$4,794
	7 or More	\$59,736	\$4,978

NOT-OD-18-175 Tuition and Fees

Undergraduate and Predoctoral Trainees and Fellows:

predoctoral trainee or fellow equal to 60% of the actual tuition level at the applicant institution, up to \$16,000 per year.

Postdoctoral Trainees and Fellows: amount per postdoctoral trainee or fellow equal to 60% of the actual tuition level at the applicant institution, up to \$4,500 per year, will be provided. If the trainee or fellow is enrolled in a program that supports postdoctoral individuals in formal degree-granting training, an amount per postdoctoral trainee or fellow equal to 60% of the actual tuition level at the applicant institution, up to \$16,000 per year.

NOT-OD-18-175 Training Related Expenses

For institutional training grants (T32, T35, T90, TL1), these expenses (including health insurance costs) for predoctoral and postdoctoral trainees:

Predoctoral Trainees: \$4,200

Postdoctoral Trainees: \$9,850

NOT-OD-18-175 Institutional Allowance

For institutional training grants (T32, T35, T90, TL1), these expenses (including health insurance costs) for predoctoral and postdoctoral trainees:

Predoctoral Fellows: \$4,200

Postdoctoral Fellows: \$9,850

For individual fellowships (F30, F31, F32, F33) (including health insurance):

Predoctoral Fellows: \$3,100

Postdoctoral Fellows: \$8,750

NOT-OD-18-179

Human Subject System (HSS)

- Effective June 9, 2018 NIH will be replacing the Inclusion Management System (IMS) with HSS
- Principal Investigators and Signing Officials will no longer see “Inclusion” links as an action option
- “Human Subjects” links on both the Status Search screens and in section G.4.b of the Research Performance Progress Report (RPPR)
- The HSS system is a shared system that enables grant recipients to electronically report and update their data on human subjects and clinical trials to NIH.

NOT-OD-18-179 HSS

- On June 9th, IMS will be taken offline and all IMS data submitted to NIH by June 8, 2018 will be migrated to the new system.
- Updates to the enrollment records in IMS must be submitted no later than Friday, June 8.
- Updates not submitted by June 8 will not be available in HSS and will need to be re-entered into HSS.

https://era.nih.gov/hss_overview.cfm

NOT-OD-18-179 HSS

What are the features?

- Add/update study information
- Create new enrollment reports or view/edit/update existing enrollment data
- Make off-cycle corrections or updates after application or Research Performance Progress Report (RPPR) submission

NOT-OD-18-180

Continuing Resolution Update:

- FY 2018 Funding Levels: Non-competing continuation awards that have already been made in FY 2018 were generally funded at levels below that indicated on the most recent Notice of Award (generally up to 90% of the previously committed level)
- Such reductions will be fully restored, and non-competing continuation grants including those that remain to be issued in FY 2018 will be made at the commitment level indicated on the Notice of Award.

NOT-OD-18-180

What impact will it have on you?

- We have received revised NoA's to increase funding levels back to the original amount.
- In most cases we are seeing the full 10% being reinstated.
- We will be contacting Administrators if a revised internal budget is needed.

PROPOSAL SUBMISSIONS TO OSP

March 2017 – March 2018

	March 2017	April 2017	May 2017	June 2017	July 2017	August 2017	September 2017	October 2017	November 2017	December 2017	January 2018	February 2018	March 2018
Count	59	50	51	49	30	23	34	23	34	36	100	106	90
On Time	54%	62%	59%	63%	37%	52%	47%	61%	65%	56%	56%	56%	52%
Late	42%	32%	35%	29%	50%	39%	29%	26%	29%	36%	42%	45%	43%
After the fact	4%	6%	6%	8%	13%	9%	24%	13%	6%	8%	2%	5%	5%
Total	100%	100%	100%	100%	100%	100%	100%	100%	100%	100%	100%	100%	100%
Expedited Request (3 days or less)	25%	26%	22%	22%	40%	26%	24%	9%	21%	19%	24%	28%	26%

On Time: Received by OSP 5 business days prior to the requested return date.

Late: Received by OSP less than 5 business days prior to the requested return date.

After the Fact: Received by OSP after the requested return date.

Expedited Request Received by OSP with 3 business days or less to review before requested return date.

PROPOSAL SUBMISSIONS TO OSP

March 2017 – March 2018

PROPOSALS	2017	2018	Change
Count	59	90	+31
On Time	54%	52%	-2
Late	42%	43%	+1
After the fact	4%	5%	+1
Total	100%	100%	-
Expedited Request (3 days or less)	25%	26%	+1

On Time: Received by OSP 5 business days prior to the requested return date.

Late: Received by OSP less than 5 business days prior to the requested return date.

After the Fact: Received by OSP after the requested return date.

Expedited Request Received by OSP with 3 business days or less to review before requested return date.

PROPOSAL SUBMISSIONS TO OSP

April 2017 – April 2018

	April 2017	May 2017	June 2017	July 2017	August 2017	September 2017	October 2017	November 2017	December 2017	January 2018	February 2018	March 2018	April 2018
Count	50	51	49	30	23	34	23	34	36	100	106	90	49
On Time	62%	59%	63%	37%	52%	47%	61%	65%	56%	56%	56%	52%	33%
Late	32%	35%	29%	50%	39%	29%	26%	29%	36%	42%	45%	43%	63%
After the fact	6%	6%	8%	13%	9%	24%	13%	6%	8%	2%	5%	5%	4%
Total	100%	100%	100%	100%	100%	100%	100%	100%	100%	100%	100%	100%	100%
Expedited Request (3 days or less)	26%	22%	22%	40%	26%	24%	9%	21%	19%	24%	28%	26%	51%

On Time: Received by OSP 5 business days prior to the requested return date.

Late: Received by OSP less than 5 business days prior to the requested return date.

After the Fact: Received by OSP after the requested return date.

Expedited Request Received by OSP with 3 business days or less to review before requested return date.

PROPOSAL SUBMISSIONS TO OSP

April 2017 – April 2018

PROPOSALS	2017	2018	Change
Count	50	49	-1
On Time	62%	33%	-29
Late	32%	63%	+31
After the fact	6%	4%	-2
Total	100%	100%	-
Expedited Request (3 days or less)	26%	51%	+25

On Time: Received by OSP 5 business days prior to the requested return date.

Late: Received by OSP less than 5 business days prior to the requested return date.

After the Fact: Received by OSP after the requested return date.

Expedited Request Received by OSP with 3 business days or less to review before requested return date.

QUESTIONS???