

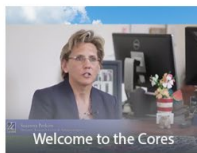


UMass Chan
MEDICAL SCHOOL



UMass Chan Research Cores – Info Guide

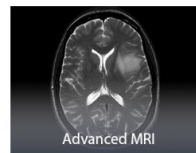
The UMass Chan Research Core Facilities are shared resources available to all internal investigators for a fee-for-service charge. The facilities offer a wide range of services to the research community including cutting edge technologies, high-end instrumentation, and technical support for basic, translational, and clinical research. We are committed to enhancing and expanding the capabilities of your research projects. Our Core Directors are leaders in their fields and offer consultation on your projects and are collaborative partners. UMass Chan has over 40 core facilities!



Welcome to the Cores



AAV Manufacturing Facility



Advanced MRI



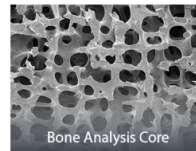
Animal Medicine



Bioinformatics



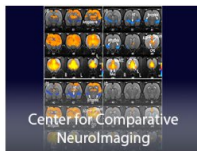
Biorepository



Bone Analysis Core



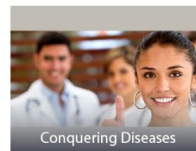
Cardiovascular & Surgical Models Core



Center for Comparative NeuroImaging



Clinical Research Center



Conquering Diseases



Cryo-EM

How to Use Core Facilities <https://www.umassmed.edu/research/cores/>

If you don't see what you need for your research, contact us and we'll assist you. Please scroll through the homepage to access the various core websites and, for services requested, contact the Core directly as indicated on their individual sites. The majority of the websites will have a rate page indicating the various prices. If using our UMass Chan Core facilities, please recognize the contribution of key core personnel in your research projects when appropriate.

View the 3D Tours at <https://www.umassmed.edu/research/cores/virtual-tours/> **more coming soon!**

For more information contact:

Susanna Perkins, Director Research Cores and Administration, Susanna.Perkins@umassmed.edu

Megan Barbale, RCA Sr. Core Accountant, Megan.Barbale@umassmed.edu

Lisa Koss, RCA Core Accountant, Lisa.Koss@umassmed.edu

Elizabeth Real, RCA Core Accountant, Elizabeth.Real@umassmed.edu

Christina Zollo, RCA Staff Accountant I, Christina.Zollo@umassmed.edu