

Partnering with the Office of Advancement to Secure Private Philanthropic Funding

Important Links

- [UMass Chan Office of Advancement](#)
- [Corporate and Foundation Relations – Office of Advancement](#)
- [Institutional Information and Forms](#)

Office Contacts

- [Dave Reynolds](#), Director of Foundation Relations
- [Prescott Stewart](#), Executive Director of Advancement

CFR Services Available

The Corporate and Foundation Relations (CFR) team within the Office of Advancement is focused on building strong, ongoing relationships between faculty and researchers and philanthropic partners that share a similar vision in the field of study. By functioning as the primary contact with foundations' and philanthropic institutions' officers and trustees, we help secure private funding for projects in partnership with members of the UMass Chan community.

Private Funding Opportunities

The CFR team distributes via email a bi-weekly digest summarizing upcoming private funding opportunities to the UMass Chan Medical School community. Sign up today by emailing:
DevelopmentFundingDigest@umassmed.edu

CFR's Services Include Helping To:

- Identify, tailor, and curate potential philanthropic funders for faculty and researchers
- Widely share private philanthropic funding opportunities with the UMass Chan community
- Assist in aligning applications with funder priorities and offering support in application process
- Develop and maintain longer term relationships with funders on behalf of UMass Chan

[Contact us](#) to learn about tools and foundations that support faculty, postdocs, predocs, graduate students, and medical school students. Please consult with the CFR team before approaching any foundation or private philanthropic funder.

Office of Advancement Services Available

The CFR team is part of the larger Office of Advancement who can also assist developing philanthropic relationships with individual donors. Dave or Prescott can help identify the right colleague in Advancement to introduce you to strategize around communications, proposals, donor introductions, cultivation, and networking.

3 Quick Steps To Set You Up For Success

1. [Subscribe](#) to the Private Funding Opportunities Digest.
2. Save Dave's information, and reach out early and often.
3. Set up a [Pivot](#) account and customize your searches.

BRIDGE INNOVATION & BUSINESS DEVELOPMENT

The hub for all commercialization
activities at UMass Chan

HELLO!

We drive UMass Chan's efforts to accelerate innovation, establish strategic partnerships and commercialize groundbreaking technologies. We connect researchers with the broader life sciences community, turning discovery into impactful solutions.

NEW RESOURCES FOR FACULTY

- **IP Portal & Inventor Dashboard:** A self-service tool to easily track invention disclosures, intellectual property requests and IP portfolios.
- **Online Agreement Request Portal:** Simplifying the submission of non-clinical Material Transfer Agreements (MTAs) and Confidential Disclosure Agreements (CDAs) to enhance collaborations.



CONTACT US

bridge.umassmed.edu/

Email us: bibd@umassmed.edu



WHAT WE DO

- **Intellectual Property Protection:** Safeguarding your innovations.
- **Business Development:** Tailored strategies to bring your technologies to the market.
- **Collaboration & Resource Sharing:** Facilitating partnerships with industry and external partners.



"It doesn't matter if it's a licensing deal or spinning out a start-up or working with an industry partner - our goal is to find new and innovative ways to leverage UMass Chan research to help solve the world's health problems."

Parth Chakrabarti, MPH, MBA

Executive Vice Chancellor for
Innovation & Business Development



**CENTER FOR CLINICAL AND
TRANSLATIONAL SCIENCE**

Welcome to the **UMass Center for Clinical and Translational Science (UMCCTS)**

Our vision is to improve health and health care delivery by:

- Advancing the science of translation
- Catalyzing high-quality research across the translational spectrum
- Building and supporting a robust translational workforce

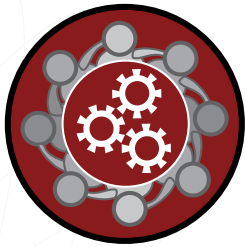
Our overarching goals:

- Speed the development of new products and approaches to advance patient care and community health
- Train the next generation of leaders in clinical and translational research

Discover how we can help you!

Our team will work with you to access our scientific strengths and unique resources.

We provide cores, funding and services that enhance the quality, efficiency, speed and impact of your clinical and translational research.



Collaboration, Community Engagement & Team Services

This includes:

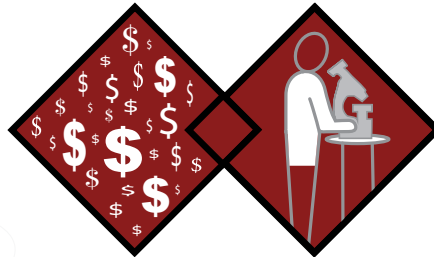
Clinical Partners

CTSA Network

UMass Campuses

Community & Science

Participation Cores



Core Funding & Resources

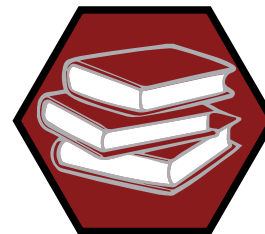
This includes:

Pilot Grant Programs

Project Management

Research Navigation

Core Resources



Workforce Development

This includes:

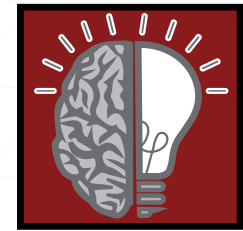
Undergraduate Opportunities

Junior Faculty

Master's Students

Pre- & Post-Docs

Clinical Research Professionals



Enabling the Quality & Efficiency of Clinical Resources

This includes:

UMCCTS TRACs

Multisite Collaborative Study Assistance

Regulatory Support

Informatics

Biostats & Study Design



(All icons are Quick links. Check them out!)



Education and Training

OPPORTUNITIES	ELIGIBILITY					
	Students	Postdocs	Residents	Fellows	Jr. Faculty	Faculty
"K-Club" Research Career and Writing Group		✓		✓	✓	✓
I-Corps Program at the UMCCTS	✓	✓	✓	✓	✓	✓
Mentored Career Development (KL2) Training Program		✓		✓	✓	
Pre- & Post-Doctoral Fellowship (TL1) Training Program	✓	✓	✓	✓		
Master of Science in Clinical Investigation Program	✓	✓	✓	✓	✓	✓
MD/PhD (MSTP) Program	✓					
Clinical/Translational Research Pathway Program	✓					
Millennium PhD Program			✓	✓		
Clinical and Population Health Research PhD Program	✓					
Junior Faculty Development Program					✓	✓
Human Research Protection Program Training	✓	✓	✓	✓	✓	✓

Highlights

Study Development Resources

- IRB
- Office of Clinical Research
- Protocol Review Committee
- Recruitment Resources
- Quantitative Methods Core

Clinical Research Center

- Space, staff and resources to conduct clinical studies and trials efficiently
- Comprises 5,000 sq ft, 6 exam rooms, 3 infusion bays, a small lab for packaging and shipping specimens, conference room space for monitor and study initiation visits
- Touch-down space for visiting staff and investigators
- Experienced staff with the clinical and regulatory skills to support a wide variety of studies

Community Engaged Research Network Models:

- Campus-based community-engaged research mentorship and training

- Promote recruitment and retention of diverse study participants
- Urban and rural locales

Research Informatics

- One-stop shop for data and analytics

Pilot Funding

- Funds dedicated to multi-investigator pilot projects to incentivize collaborative clinical and translational science partnerships across campuses
- Inter-campus collaborative projects involving faculty members from the Worcester campus and faculty from another UMass campus

Massachusetts Medical Device Development Center (M2D2) - UMass Lowell & UMass Chan

- Incubators/Facilities
- Medical, business and product development assistance

Cores

1. 3-D Printing Core
2. Bioinformatics Core
3. Biospecimen, Tissue and Tumor Bank Core
4. Clinical Research Core
5. Investigational Drug Service Core
6. Office of Clinical Research Core
7. Small Molecule Screening Facility Core
8. Umbilical Cord Blood Core

Programs

1. Biomarker Program: Proteomics/Olink
2. Biostatistics, Epidemiology, and Research Design (BERD) Program
3. Community Engagement and Collaboration Program (CECC)
4. Educational and Training Programs
5. Pilot Project Awards Program (PPP)
6. QA/QC Program
7. Regulatory Knowledge and Support Program
8. Research Informatics Program
9. Science Participation Resource Center Program (SPRC)



A Message from Dr. Marlina Duncan- Vice Chancellor for Diversity and Inclusion

I am excited to welcome you to our UMass Chan Medical school community! At UMass Chan Medical School, we know that diversity, equity, and inclusion are central to achieving our mission. Our charge is to create a community of health care providers, researchers, and educators dedicated to advancing knowledge, health, and wellness in the service of the community, the nation, and the world. This requires bringing together and supporting the work of exceptional learners, faculty and staff from all backgrounds and all lived experiences.

We recognize that talent is not bound by race, ethnicity, class, religion, national origin, sexual orientation, gender identity, age, and/or disability status. We also know that the advancement of knowledge and healthcare practices benefits from the full participation of people with a wide range of perspectives, experiences, and ideas. Our goal is to recognize, understand and fight against barriers — prejudice, bias, and systemic barriers — that stand in the way of creating a truly diverse, equitable and inclusive UMass Chan Medical School. I wish you the best as you make a smooth transition to UMass Chan, and I look forward to working with you to advance our diversity, equity, and inclusion goals.

Faculty Programming



DEI Liaisons

The DEI Liaisons group is composed of faculty representatives from each academic and clinical department. These faculty are tasked with staying abreast of the University and health systems diversity initiatives, priorities, and concerns



Affinity Groups

Affinity groups at UMass Chan remain open to all individuals and are designed to build community based on shared interests or experiences. They provide a supportive community for faculty, learners, staff and others through networking and professional development events.



Diversity, Equity, and Inclusion Faculty Development Education

We offer a series of workshops and training geared towards developing faculty's skillset around topics related to diversity, equity, and inclusion. Topics include fostering inclusive classrooms and labs, inclusive pedagogy, and mentoring across difference.



Diversity, Equity and Inclusion Programming



Native American and Indigenous Health Initiative

UMass Chan is committed to developing a deeper understanding of the relationship between the institution, the Native and Indigenous Peoples of this region, and the land on which UMass Chan is situated. We have partnered with members of the Nipmuc Tribe to create educational opportunities for our UMass Chan and surrounding communities to learn about indigenous health and healing.



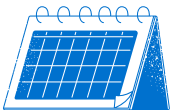
Centering The Margins

Centering the Margins is a series with the purpose of creating a space for the UMass Chan community to gather and engage in informal dialogue around the lived experiences of diverse and marginalized populations. The goal of these dialogues is to mobilize our community to engage in social change



UpNext!

The bi-weekly newsletter, UpNext!, focuses on the narratives of marginalized community members and highlights their accomplishments, while also addressing diversity, equity, and inclusion issues. UpNext! also lists all upcoming events and trainings.



Diversity and Inclusion Signature Events

Heritage months highlight the strength we gain from our multicultural roots and values, celebrating the achievements and resilience of various groups. The DIO's monthly programs educate the UMass Chan community on the contributions of marginalized communities through events like Black History Month, LGBTQ+ Pride Month, and Hispanic Heritage Month.



Restorative Justice

UMass Chan is committed to sustaining a campus culture in which each individual's humanity and dignity are acknowledged and institutional resources are available equitably. This process is grounded in the principles of active and accountable conflict resolution, community building, and healing. One that offers a structure that helps establish a safe and supportive space intended to promote authentic and equitable conversation through a collaborative decision-making process, resulting in both individual and community healing.

Our leadership

Amy Miarecki

Assoc Vice Chancellor
Grants & Contracts
Administration

Bethanne Giehl

Executive Director
Grants & Contracts
Administration

Lily Yee

Director
Grant Accounting &
Compliance

Raji Bhat

Director
Grants & Contract
Administration



UMass Chan
MEDICAL SCHOOL

UMASS CHAN MEDICAL SCHOOL

**Welcome to
Grants and
Contracts
Administration**

Grants and Contracts Administration

UMass Chan Medical School
55 Lake Avenue North





Our mission

The mission of Grants and Contracts Administration (GCA) is to support principal investigators (PI's) and departments in proposal development, submission, award acceptance, and management of all extramural funds in compliance with University and sponsor guidelines.

Our services

GCA is responsible for preaward and postaward compliance with all non-technical sponsor requirements.

GCA has responsibility for various systems required by the federal government, for providing management reports, and for keeping abreast of major grant/contract regulations changes.

For additional information and more details about GCA's services, please visit our [SHAREPOINT SITE](#).

GCA Offices

Office of Sponsored Programs

OSP supports faculty and staff as an information resource on all aspects of research administration from idea to award. They aid in locating sources of funding, reviewing and approving proposals, negotiating grants and contracts, and development and dissemination of institutional policies related to research administration.

research.funding@umassmed.edu

Grant Accounting & Compliance

Grant Accounting is responsible for the financial review and management of restricted and externally sponsored funds. Following applicable Medical School and funding agency policies, these activities include establishing chartfield strings and budgets for new funds, review and approval of expenditure activity, cost transfers and financial closeout. Additional activities include sponsored project billing, accounts receivable management, preparation and submission of financial reports and external audits.

GrantAccounting@umassmed.edu

Cost Analysis & Compliance

The Cost Analysis & Compliance department provides a wide range of services and oversight relating to ensuring the University's compliance with the Uniform Guidance and the Cost Accounting Standards. The division is also responsible for University's annual space survey, participant payments and indirect cost proposal.

raji.bhat@umassmed.edu

IACUC Information

Website

<https://umassmed.sharepoint.com/sites/umms-iacuc>

PRiSM

[IACUC electronic application](#)

UMass login credentials and account setup required

IBC Information

Website

<https://umassmed.sharepoint.com/sites/ibc>

PRiSM

[IBC electronic application](#)

Staff Contacts

Casey Moran

Director, IACUC/IBC

Vanessa Pogany

IACUC Regulatory Coordinator

Mali Taylor

IBC Regulatory Coordinator

Elizabeth Nadeau

Sr. Protocol Specialist IACUC

Damema Spragens

Research Compliance Specialist

Sarah Connor

Administrative Assistant

For General inquiries

IACUC@umassmed.edu

IBC@umassmed.edu



UMass Chan
MEDICAL SCHOOL

IACUC

*Institutional Animal Care & Use
Committee*

IBC

Institutional Biosafety Committee

IACUC

Areas of Oversight

The animal care and use program, animal facilities, procedures and training related to research involving live vertebrate animals.

Chaired by Dr. Matthew Gounis, PhD

Getting Started

1. Contact IACUC@umassmed.edu to setup a PRiSM account.
2. Submit IACUC protocol through PRiSM. Protocols reviewed on a rolling basis.
3. Complete [animal health clearance and training](#).
4. Research activities may only begin once IACUC approval has been granted.

IBC

Areas of Oversight

Research involving use and/or storage of recombinant or synthetic nucleic acids, infectious agents, bio-toxins, and human/nonhuman primate samples.

Chaired by Dr. Thomas Greenough, MD

Getting Started

1. Contact IBC@umassmed.edu to setup a PRiSM account.
2. Submit IBC protocol through PRiSM, by monthly submission deadline.
3. Complete EH&S-IBC [training](#).
4. Research activities may only begin once IBC approval has been granted.

New Faculty FAQs

1. How much time will it take to receive IACUC or IBC protocol approval?
-Approximately 10 weeks for IACUC and 6 weeks for IBC (from submission to approval).
2. Where can I find information on transferring animals, animal facility space needs, or other animal-care resources offered at UMass Chan?
-Contact Department of Animal Medicine for this information. Alternatively, information can be found on the [Animal Medicine website](#).
3. Can animals be transferred to UMass Chan before IACUC protocol approval?
-Under certain conditions. Contact IACUC@umassmed.edu to inquire about a Holding Protocol, which may allow animals to be held at UMass Chan while an experimental protocol is secured.

Getting Started

Human Subjects: Institutional Review Board

IRB

For
Investigators
(PI, Sub-I)



Go to **Getting Started** on our public website:

<https://www.umassmed.edu/ccts/irb/getting-started2/>

Read the ***Investigator Manual document (HRP-103)** and any **SOP documents** you feel are relevant to your project (click the blue buttons on the webpage to find these documents).



Complete the education requirements for human subjects research found on the CITI program website. A **link to CITI** can be found on:

<https://www.umassmed.edu/ccts/irb/getting-started2/>

The **list of course requirements** can be found in our **Education Requirements** section: <https://www.umassmed.edu/ccts/irb/education-requirements/>



Complete training for the Research Management system (RMS) eIRB Module, found on the ***eIRB Sharepoint** website:

<https://umassmed.sharepoint.com/sites/RMS/IRB>.

Review *at least* these video courses: Intro to the IRB and Human Subject Research, PI Mini Course and RNI Course. eIRB courses 1, 2 and 3 are also recommended, as well as Course 4 if you plan to work with IRBs outside of UMass Chan. **Review relevant Job Aids/other materials.**



Review relevant forms and templates. Always use a fresh template (if available) when filling out a new document for a study.

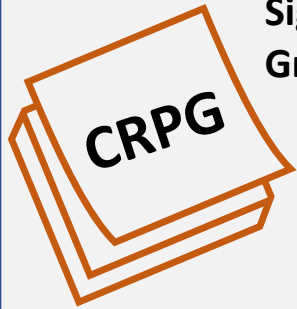
Begin with ***Investigator Study Plan (HRP-503)**. Follow its instructions to see if other documents are needed. Document templates are located on the ***eIRB SharePoint website Library page** [HERE](#).

Also, use the ***Pre-Check Checklists** to help avoid common errors.

****UMASSMED.edu email/credentials are required to log in to this site/document.***

Additional Steps

For Clinical Research Preparedness



Sign up for the Clinical Research Professionals Group (CRPG) by submitting a request via TRAcS [HERE](#).

CRPG members are kept informed via email announcements of pertinent changes or new developments at UMass Chan. In addition, CRPG meets once per month. Meetings are a forum for presentations and discussion on a variety of clinical research related topics.

For Investigators (PI, Sub-I)



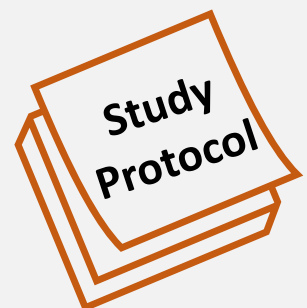
Become accustomed to using and checking your **UMASSMED.edu email & Single Sign On (SSO) credentials.**

Per our IT data security policy, UMass Chan systems are only accessible via umassmed.edu credentials. You *must* use them to log in.

In addition, any emails you receive from our systems will also go to your umassmed.edu email account.

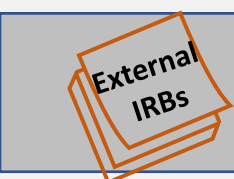
You may wish to ask the UMass Chan IT Department to either: 1) show you how to set up Outlook so that both your umassmemorial.org and umassmed.edu accounts appear when you log in, or 2) have your umassmed.edu emails forwarded to your umassmemorial.org account (note: this option may be going away soon).

Contact UMass Chan IT at UMassChanHelpdesk@umassmed.edu or (508) 856-8643.



Familiarize yourself with your Study(ies)

- Be sure to read your Study Protocol and other Study Documents carefully!
- Know the obligations and duties of your role and how to perform them.
- NOTE that the PI is ultimately responsible for all aspects of the study regardless of whether they delegate study tasks or not.



Bonus tip! If you will be working with an IRB that is NOT UMass Chan (External IRB) be sure to 1) familiarize yourself with all of their requirements, and 2) view our information online regarding Reliance Agreements [HERE](#).

Need More Help?



Virtual Office Hours Are Available!



The IRB staff offer virtual Office Hours via Zoom!

For
Investigators
(PI, Sub-I)

This time is used to answer questions regarding the RMS eIRB system as well as other more general IRB related questions.

For a list of days/times that **IRB** virtual **Office Hours** are offered as well as the Zoom link to them, please use the following link:

[https://umassmed.sharepoint.com/sites/RMS/IRB/SitePages/eIRB Office Hours page.aspx](https://umassmed.sharepoint.com/sites/RMS/IRB/SitePages/eIRB%20Office%20Hours%20page.aspx)



The UMass Center for Clinical and Translational Science (UMCCTS) also offers virtual Office Hours via Zoom!

This time is used to answer questions regarding the Translational Research Accelerator (TRAcS) portal.

TRAcS provides a single point of coordinated access to UMCCTS cores and services, including those related to clinical trial development and implementation, biorepository, research navigation, access to study cohorts, data analysis, and dissemination of results.

For a list of days/times that **TRAcS** virtual **Office Hours** are offered as well as Zoom links to them, please use the following link:

<https://umassmed.sharepoint.com/sites/ccts/SitePages/TRAcS.aspx>

Note: For both types of Office Hours, *no appointment needed, just drop in when we're scheduled to be there!* If none of the days/times listed work for you, please let us know and we can set up an alternative time to discuss your issue.

Institutional Research, Evaluation, & Assessment's Role and Function



The **mission** of the **Office of Institutional Research, Evaluation, & Assessment (IREA)** is to provide support to the Office of the Dean/Provost, Office of the Chancellor, and external reporting functionality to the University of Massachusetts President's Office as well as state and federal organizations. IREA reports to the Vice Provost for Educational Affairs providing an umbrella of support across the three schools comprising the UMass Chan Medical School campus.

The Office of IREA has four *primary* goals:

Goal 1: Responsible for gathering, analyzing, and reporting the data which supports numerous critical functions outlined in the UMass Chan Medical School's mission, including administrative reporting (e.g., educational performance measures and quality indicators for mission-based management), and accreditation for LCME, NECHE, and CCNE. [Total=93.5 IR surveys]

Goal 2: Provide assessment consultation on test construction, student examination scores and grading, conduct item and test analyses, and produce associated reports for students and faculty.

Goal 3: Deliver curricula evaluation support by providing instrument design and production services, data analyses, evaluation, interpretation of results, and course evaluation reporting. ***This includes support to faculty who need evaluation data for promotion.***

Goal 4: Conduct research in healthcare education, as well as provide consultation on and assistance with research design, instrument design, data collection and analyses, interpretation of results, preparation of abstracts and papers for submission to journals and conferences, and outcomes to support centrally funded education grants and scholarly activity.

IREA team members:

Susan Barrett, MS; Institutional Research Analyst II
Moya Pemberton; Institutional Research Analyst II
Brianna Robuccio; Institutional Research Analyst II
Ashlyn Roy; Institutional Research Analyst II
Carl Davery Bland; Institutional Research Analyst III
Michele Carlin; Institutional Research Analyst III
Michael O'Connor, MA; Institutional Research Analyst III
Wei Xia, MA; Institutional Research Analyst III
Mary L. Zanetti, EdD; Senior Director

Feel free to contact us at IREA@umassmed.edu for assistance.

New Faculty Orientation, January 11, 2023
Prepared by Mary L. Zanetti, EdD, Senior Director for IREA



How to Get IT Help

IT Helpdesk

IT Employee Center: <https://umassmed.service-now.com/>

Phone: (508) 856-8643

Email: UMassChanHelpdesk@umassmed.edu

Location: Main Campus Building, S1-112 across from T.H. Chan School of Medicine Student Lounge

Hours of Operation

Monday – Friday

In-person Support: 7:30 am – 5:30 pm

Phone Support: 7:30 am – 5:30 pm

Live Chat Support: 9:00 am – 5:00 pm

Email Support: Addressed in the order they are received; response within two business days

Classroom Technology Assistants (CTAs) are available to assist in the classroom with your technology needs. Please send audio visual meeting and event support requests to the IT Helpdesk with as much lead time as possible. Technicians are available for training and consultation by request.

IT – Academic Technology

Our Team

Patricia (Patty) Lanzillotti, Associate CIO, IT – Academic Technology

Patricia.Lanzillotti@umassmed.edu

Abhilasha (Abhi) Yalamanchili, Senior Director, IT – Academic Technology (OASIS, PeopleSoft, Academic tool integrations)

NutsandBolts@umassmed.edu

Jenene Cook, Manager, IT – Academic Technology (Instructional Design & Technology)

AcademicInstructionalDesignandTechnology@umassmed.edu

Jack Cleary, Manager, IT Technical Services (Helpdesk)

UMassChanHelpdesk@umassmed.edu

Educational Need or Pedagogical Approach	Supporting Technology
Classroom polling and engagement technology	Top Hat ⁺
Curriculum Management	OASIS
Digital exams and educational assessment technologies	ExamSoft ⁺ , Blackboard Learn ⁺
Educational authoring applications	Blackboard Learn ⁺ , Articulate Rise* & Storyboard*
Instructional Design (online courses, Independent Learning Modules)	Blackboard Learn ⁺ , Articulate Rise* & Storyboard*
Learning Management System (LMS)	Blackboard Learn ⁺
Lecture Capture	Echo360 ⁺ , Zoom ⁺
Specialty teaching & learning technology (Virtual Microscopy)	Best Network
Video platform systems	Echo360 ⁺

⁺Standard group trainings are available July-August. Additional trainings and consultations are available upon request.

*Licenses are limited to Academic Technology team; tools are used to provide associated services.

The Library is your key to access a wide range of resources, services, and expertise including:

Electronic Resources

- Databases
 - PubMed
 - UpToDate
 - Ovid
 - DynaMed
 - VisualDx
 - Scopus
 - ++ more
- eJournals
- eBooks
- Subject Guides
- Institutional Repository

Services

- Interlibrary Loan
- Off-Campus Access
- Borrowing
- Technology Support
- Archives & Special Collections

Events

- Curated Displays
- Author Talks
- Educational Gatherings
- Visiting Artists
- Workshops and Classes



Clinical and Educational Services

- Clinical Instruction
 - Evidence Based Medicine
 - Expert Searching
- Systematic Review Support
- Nursing Resources and Reference Support
- Bibliometric Management Support
 - Endnote
 - Refworks

Research & Scholarly Communication Services

- Research Impact Tracking
- Bibliometric Analysis
- NIH Public Access Compliance Support
- Research Data Management Services
- Copyright, Author Rights, Fair Use
- Scientific Writing
- Publishing Support



<https://library.umassmed.edu>

University Campus, 1st Floor

Staffed Hours: Mon-Friday

24/7 Access to UMass Chan/UMMHC Faculty

And so much more. Got a Question? Just Ask!



The Office of Well-Being (OWB) is focused on fostering a healthy workplace and supporting faculty, staff, residents, post-docs, fellows and student employees thrive. OWB programs provide practical strategies for enhancing well-being in multiple dimensions.

Office of Well-Being Programs

Employee Assistance Program

The Employee Assistance Program (EAP) offers confidential support to help employees manage work and life stressors.

Services include counseling, support groups, education, work-life resources, manager consultations, and crisis support.

EAP is confidential, free and accessible 24/7.

1-800-322-5327
EAP@umassmed.edu

Wellness Program

The Wellness Program offers in-person and virtual resources, tools, and signature events that promote health and wellness.

The program aims to support each member of the UMass Chan community to achieve balance, resilience, and a greater sense of fulfillment.

OWB@umassmed.edu

Wellness Farm

The Wellness Farm is a hydroponic farm that operates year-round to produce fresh, nutritious food. UMass Chan staff and student volunteers help seed and harvest the crops.

Food harvested from the farm is donated to Worcester Public School students and the Max Baker Resource Center at UMass Chan.

WellnessFarm@umassmed.edu

Scan the QR Code or visit [OWB on MyHR](#) for the latest programs, events & on-demand resources!



Better Health | Better Wellness | Every Day | Everyone



Employee Assistance Program

Call 508-856-1327 or 1-800-322-5327

for 24/7 services & support

EAP@umassmed.edu

The UMass Chan Employee Assistance Program (EAP) recognizes that life's challenges don't stop when the workday begins. Sponsored by the Office of Well-Being, EAP offers confidential support to help manage work stressors and life's demands. Services include counseling, consultation, support groups, education, work-life resources, and crisis support.

Confidential, free and accessible 24/7.

Designed to meet you where you are.

EAP Offerings

Confidential Counseling

Short-term intervention for personal, emotional or work-related challenges. 24/7 access to confidential telephonic support.

EAP Consultation

for Managers and Leaders

Expert coaching and guidance when an individual's mental health impacts performance, productivity or team dynamics.

EAP Support Groups

Peer groups, facilitated by EAP counselors on topics such as depression and anxiety, grief/loss, life changes, parenting, and more.

Work-Life

Resources & Referrals

Supporting employees with access to child care, elder care, financial assist and legal consultation.

Crisis support

Timely, responsive services to help individuals and/or teams manage acute, high-stress events for greater stability and recovery.

Education & Awareness

Trainings, workshops and digital resources for issues like stress management, financial well-being, self-care, managing conflict, and more.

Women's Faculty Committee

Women's Faculty Committee Mission Statement

The Mission of the Women's Faculty Committee (WFC) of UMass Chan Medical School/UMMH is to address the needs of women faculty and promote the status of women in the UMass Chan Medical School and the UMass Memorial Health Care clinical system.

Our goals include the following:

- To encourage the hiring, promotion, and retention of women faculty
- To provide appropriate programming and special events to enhance career development.
- To provide oversight in hiring individuals in administrative and leadership positions in the school and clinical system as well as oversight of the composition of the major committees in each system so as to have fair representation.
- To promote Women's Health initiatives in the clinical system and medical school curriculum.
- To provide mentoring of medical and graduate students for careers in clinical and academic medicine.
- To create a supportive and welcoming environment so women faculty may grow in their roles as clinicians, educators, researchers, scholars, leaders, and mentors.

The WFC Sponsors the following annual events:

- Women's History Month event celebrating the national theme (the 2024 Women's History Month Theme was "Placing the 'Equity' in Women's Health ") – March 2024
- Women's Health Month event highlighting local research in health topics – June 2024
- Women's Faculty Awards ceremony celebrating the accomplishments of UMass Chan Faculty in education, research, and mentoring

Contact Information:

- Co-chairs: Alexandra Wink, PhD (Basic Science – Alexandra.Wink@umassmed.edu) and Abita Raj, MD (Clinical – Abita.Raj@umassmemorial.org)
- Faculty Affairs Support: Carrie Wambach (faculty.development@umassmed.edu)

The WFC meets over Zoom on the first Thursday of each month at 12:00 noon. Contact faculty.development@umassmed.edu for the Zoom link. Meetings are open to all, regardless of gender identity and faculty status.



FACULTY GUIDANCE ON CONFLICTS OF INTEREST AND CONFLICTS OF COMMITMENT

UMass Chan faculty are encouraged to share their expertise facilitating the translation of research into practice. However, engaging in these outside activities (whether through advisory boards, consulting agreements, start-ups, etc.) can create real or perceived Conflicts of Interest (COI) and Conflicts of Commitment (COC). Such conflicts are often unavoidable and are not necessarily prohibited, but they must be timely disclosed, reviewed, and, when appropriate, mitigated and monitored. Managing conflicts is essential to preserve research integrity, protect research security, safeguard your reputation and that of UMass Chan, and protect research subjects and patients. Visit the [Conflict of Interest](#) page for additional information.

Disclosure Requirements

Per University policy, potential COI's and COC's must be disclosed. It is the responsibility of Faculty, investigators, and senior officials to disclose outside activities and financial interests held by them (or their family members) that are reasonably related to their Institutional Responsibilities. UMass Chan utilizes an electronic COI (eCOI) system where disclosures must be made at the following times:

- *At Hire: Within 60 days of hire or promotion (prior to serving as an Investigator)*
- *Annually: As part of the yearly campaign (usually April)*
- *Within 30 days of engagement in a new Outside Activity, substantive change in financial interest or substantive change in a previously approved Outside Activity.*

For additional information regarding COI, COI Committees, etc., please contact the Office of Management at coi@umassmed.edu or via phone at 508 – 856 – 6960.

Outside Activities

Faculty members are expected to devote their primary professional loyalty, time, and energy to their position at UMass Chan. Ordinarily, state employees are not permitted to engage in Outside Activities that overlap with their Institutional Responsibilities. However, faculty are given special authorization by the Commonwealth of Massachusetts to devote limited time to Outside Activities because of the recognized benefits to faculty, the institution and society of such engagements. Review and approval from your Department Chair with support from COI officials, is required prior to engaging in an Outside Activity to ensure a COI, COC or other conflict does not exist. Where an actual or perceived conflict exists, mitigation measures may be taken as directed by the appropriate COI Committee and all Outside Activities must be disclosed.

Please see the [Policy on Faculty Consulting and Outside Activities](#) for additional information.

Research-Related Disclosures and Certifications

Faculty Members and other investigators must disclose any potential COIs at the time of research proposal submission and in connection with other research-related transactions (e.g., SRAs, Licensing Agreements, procurements). Conflict-related certifications are required by the Office of Sponsored Programs, the Office of Clinical Research, the IRB and the Office of Innovation and Business Development (aka BRIDGE). You must either certify that you have NO potential conflicts or flag any financial interests that could be related to the specific research project or transaction. If you have any such interests, you must ensure that they are accurately reflected in your COI Disclosure Form.

Review of Potential Research-Related COIs

The Office of Management, in conjunction with the appropriate COI Committee will review COI disclosures to determine if an actual or perceived conflict exists. If a conflict requires management (mitigation), a management plan will be issued by the appropriate COI Committee and filed with funding agencies, as required.

[OFFICE OF MANAGEMENT](#) | [GIVE FEEDBACK](#) | [CONTACT](#)

Who we are: The Office of Management (OOM) works collaboratively with UMass Chan colleagues to help address and resolve risk management and legal issues impacting the school. OOM advises and provides guidance on a wide variety of campus matters including privacy law compliance, conflict of interest, ethics, litigation, research compliance and security, policy and statutory reviews, contracts, international support services, disability accommodation services, and public records.

As a public university, UMass Chan Medical School is an agency of the Commonwealth of Massachusetts and is subject to many of the requirements of other state agencies. For example, the University is subject to laws and regulations concerning conflict-of-interest, competitive procurement of goods and services, limitations on political activities, public records, and record retention requirements.

Our team consists of attorneys and professionals well-versed in their subject matter and is led by James G. Healy, J.D., Deputy Executive Vice Chancellor for Management, with assistance from Assistant Vice Chancellor for Management, Ryan Menard, J.D., and Privacy Officer and Senior Director of Compliance & Privacy, June Brooks, J.D. We consult frequently with the University's Office of General Counsel.

The following are some helpful tips and contact information:

- What to do if you're served a subpoena:
 - o Please do not accept service of a subpoena as you are not authorized to do so on behalf of UMass Chan. Instead direct the process server to contact James Healy at james.healy@umassmed.edu.
 - o If someone in your department has accepted a subpoena and brings it to your attention, please send it to James Healy at the above email address immediately.
- Immediately report all suspected privacy or other compliance incidents; this could be anything from improper disclosure of personal information, a conflict of interest or ethical issue, or suspicions of fraud, waste, or abuse. Any such incidents or concerns can be reported anonymously to the confidential Fraud, Ethics, & Privacy Hotline at 508-856-TEAM (8326), or by email to privacyandcompliance@umassmed.edu.
- For questions about a potential conflict of interest related to research or employment at UMass Chan, please reach out for guidance at 508-856-6960 or coi@umassmed.edu.
- For questions about international travel, foreign projects, or international risk, contact internationalsupportservices@umassmed.edu.
- If you, a student, or a fellow UMass Chan employee is seeking an accommodation, please visit the ADA/Disability Management Center webpage for information and contact details: <https://www.umassmed.edu/officeofmanagement/adadisabilitymanagementcenter/>

We look forward to working with you!



FOREIGN PROJECT REGISTRATION

The Foreign Project Registration (FPR) process was created to anticipate and address potential administrative, financial and/or legal issues that may arise in the development and implementation of foreign projects. The form asks investigators to provide details regarding the nature of their project so that International Support Services (ISS) can advise and assist investigators throughout the project's lifespan.

Any UMass Chan community member initiating, renewing or participating in a project with Foreign Component must complete an FPR form for each project with an international component. A foreign project is any activity that involves a **"Foreign Component"** (as defined below).

International components may include but are not limited to:

- The performance of any significant scientific element or segment of a project outside of the United States, either by a UMass Chan faculty member, student or staff or by a researcher employed by a foreign organization, whether or not grant funds are expended.
- Research conducted in a foreign country or with a foreign partner.
- Clinical work conducted in a foreign country.
- U.S. or UMass Chan funding going to a foreign entity.
- External funding from a foreign sponsor, foreign institution or in non-U.S. currency.
- UMass Chan funded foreign travel for the purpose of data collection, surveying, sampling, and similar activities
- Any activity that may be subject to export control.
- Any activity of UMass Chan that may have an impact on U.S. foreign policy through involvement in the affairs or environment of a foreign country (e.g., USAID).
- Foreign collaborator travel to the United States.
- Foreign collaborator provision of samples or data.
- Hiring of foreign nationals, sending UMass Chan faculty, staff and trainees to a foreign country, traveling to an international destination.

Timing of Submission:

The FPR form must be completed a **minimum of 30 days** before the project start date or when it is reasonable to believe that the project will be funded. Foreign Projects funded by any institutional funds **MUST** be registered and receive approval prior to disbursement of funds.

Submission and Review Procedures:

- Download, save and complete the [Foreign Project Registration form](#).
- **Department Approval:** The Principal Investigator must obtain appropriate department/program leadership approval and signatures on the FPR form prior to submission to the ISS.
- Submit the leadership approved form and all supporting documents, including Scope of Work, Budget Justification, MOU, etc. to InternationalSupportServices@umassmed.edu
- **Administrative/Compliance Review:** ISS will make an initial review of the FPR and an approved project is returned to the PI with all necessary signatures.
- Where a project presents compliance or health/safety/security risk, and it is determined that project-specific risks cannot be properly mitigated, ISS may advise UMass Chan to turn down any outside funding for a project.

Keep the ISS apprised of any developments or changes made to the project. You can find more information here on [Foreign Project Registrations](#).

Human Resources

Welcome to UMass Chan Medical School: New Faculty HR Guide

Congratulations on joining UMass Chan Medical School! As a new faculty member, we are thrilled to welcome you to our esteemed institution. To ensure a smooth transition and to support you in navigating various HR processes, we have compiled this guide to provide you with essential information and contacts for your convenience. We look forward to supporting your journey as a valued member of our faculty community.

MyHR Employee Portal: <https://umassmed.sharepoint.com/sites/hr/> is your one-stop resource for all your employment related questions and contacts. Whenever you have a question, from benefits and retirement to leaves of absence, payroll and required learning, visit [MyHR - Home](#) for quick and easy self-service. There are also topic specific links below. Additional HR related information can be found on our public facing website <https://www.umassmed.edu/hr/>

Benefits, Retirement, and Leaves of Absence: Understanding and accessing your benefits package is crucial for your overall well-being. For inquiries regarding benefits enrollment, coverage details, eligibility, leaves of absence, workers' compensation:

HR Benefits Department
508-856-5260, Option 1 – Benefits and retirement
508-856-5260, Option 2 – Leaves of absence
[Benefits and Retirement](#) on MyHR
Benefits.umms@umassmed.edu
FMLA.UMMS@umassmed.edu (FMLA/PFML/PLOA)
Workerscomp.umms@umassmed.edu (Workers' Compensation)

Compensation: Ensuring fair and competitive compensation is essential. While faculty salaries are managed by OFA, inquiries regarding salary, positions descriptions, or compensation-related matters for your staff:

HR Compensation
Compensationumms@umassmed.edu

Employee and Labor Relations: Maintaining a positive work environment and resolving any workplace concerns is integral to our community. If you have questions regarding non-faculty employment policies, conflict resolution, employee conduct, and guidance interpreting collective bargaining agreements:

HR Employee and Labor Relations
508-856-5260, Option 6
EmployeeRelations@umassmed.edu
[Employee and Labor Relations](#) on MyHR

Immigration Services: For international faculty members requiring assistance with visas or green cards, or for any faculty who have questions about hiring a foreign national, our dedicated immigration services team is here to support you:

Immigration Services Office
508-856-5260, Option 3
Immigrationservices@umassmed.edu
[Immigration Services Office \(ISO\)](#) on MyHR

Learning and Organizational Development: We are committed to fostering your professional growth and success. While the Office of Faculty Affairs conducts myriad opportunities for your professional growth as an academic, HR can offer you and your staff additional learning opportunities or organizational development consultations. This is also where you will find assistance on the HR LMS for required compliance and other courses:

HR Learning and Org Development
508-856-5260, Option 7
LandD@umassmed.edu
Lmssupport@umassmed.edu
[My Career and Development](#) on MyHR

Onboarding: Our onboarding team are available to assist you or your staff with HR Orientation or Onboarding tasks:

HR Onboarding
508-856-5260, Option 5
onboarding@umassmed.edu
[I'm a New Employee!](#) on MyHR

Payroll: The Payroll office sits within Finance and are available to answer your paycheck, tax, time entry, or time off questions or corrections:

Payroll
508-856-7855
[Payroll Services](#) on MyHR
payrollumasschan@umassmed.edu

HR Direct: This is where you will enter or approve timekeeping, find paystubs, update personal details or obtain tax documents. <https://www.umassmed.edu/hr/hrdirect/>. HR Direct assistance can be found here: [Payroll Services](#)

Talent Acquisition: Our Talent Acquisition team is here to help you hire the best and the brightest. While most HR related matters relating to hiring or promoting staff will be managed by your academic administrator, iCIMS manager access or specific questions can also be answered by our exceptional recruiters:

HR Talent Acquisition
HRTalentAcquisition@umassmed.edu

HR Leadership Team: Lastly, if you are unable to obtain the answers you seek, or have more complex issues that need delicate attention, feel free to reach out to the HR Leadership Team:

Carolyn Gorham, Assoc. VC People Strategies Carolyn.Gorham@umassmed.edu
Jackie McGravey, Asst. VC People Development and Wellness Jacquelyn.McGravey2@umassmed.edu
Vanessa Long, Exec. Director People Operations Vanessa.Long@umassmed.edu

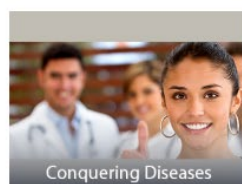
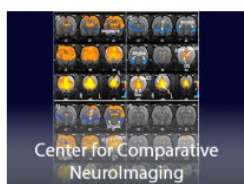
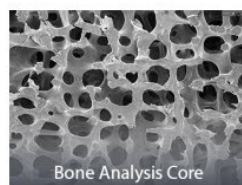
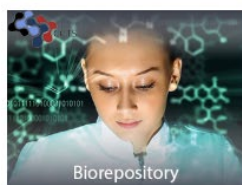
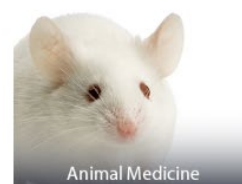


UMass Chan
MEDICAL SCHOOL



UMass Chan Research Cores – Info Guide

The UMass Chan Research Core Facilities are shared resources available to all internal investigators for a fee-for-service charge. The facilities offer a wide range of services to the research community including cutting edge technologies, high-end instrumentation, and technical support for basic, translational, and clinical research. We are committed to enhancing and expanding the capabilities of your research projects. Our Core Directors are leaders in their fields and offer consultation on your projects and are collaborative partners. UMass Chan has over 40 core facilities!



How to Use Core Facilities <https://www.umassmed.edu/research/cores/>

If you don't see what you need for your research, contact us and we'll assist you. Please scroll through the homepage to access the various core websites and, for services requested, contact the Core directly as indicated on their individual sites. Many of the websites will have a rate page indicating the various prices. If using our UMass Chan Core facilities, please recognize the contribution of key core personnel in your research projects when appropriate.

View the 3D Tours at <https://www.umassmed.edu/research/cores/virtual-tours/>

For more information contact:

Megan Barbale, RCA Sr. Core Accountant, Megan.Barbale@umassmed.edu

Elizabeth Real, RCA Core Accountant, Elizabeth.Real@umassmed.edu

Christina Zollo, RCA Core Accountant, Christina.Zollo@umassmed.edu

Research Core Administration, RCA@umassmed.edu

Advanced MRI Center

Co-Directors: Salman Shazeeb & Manoj Saranathan

Phone: 508-856-1884

mohammed.shazeeb@umassmed.edu

3T Philips body MRI system for human and animal research equipped with a variety of coils for MRI studies of different organ systems; neuroimaging (fMRI, DTI, etc.), body MRI, cardiac MRI, and metabolic imaging (MR spectroscopy)

Animal Medicine

Director: George DeMarco

Phone: 508-856-3150

george.demarco@umassmed.edu

In vivo research by providing animal care, training, surgical, diagnostic, and technical services

Biolmage DMS Core

Director: Caterina Strambio-De-Castillia

Phone: 508-856-2383

caterina.strambio@umassmed.edu

alex.rigano@umassmed.edu

Support and training services for the curation, storage, management, sharing, and retrieval of image data.

Bioinformatics Core

Director: Ozkan Aydemir

Phone: 774-455-4789

biocore@umassmed.edu

Computational services in analyzing data generated from next generation sequencing studies

Bone Analysis Core

Director: JaeHyuck Shim

Phone: 508-856-6961

jaehyuck.shim@umassmed.edu

Services for bone imaging, histology and histomorphometry

BSL-3 Core Laboratory

Director: Hardy Kornfeld

Phone: 508-856-2646

hardy.kornfeld@umassmed.edu

Laboratory space for BSL-3 containment

Cardiovascular & Surgical Models

Director: Timothy Fitzgibbons

Phone: 508-856-6573

timothy.fitzgibbons@umassmemorial.org

Models of metabolic diseases within cardiovascular disease models. Providing surgical and study models across multiple scientific platforms.

Clinical Research Center (CRC)

Director: Bethany Trainor

Phone: 508-856-2800

bethany.trainor@umassmed.edu

Providing efficient, reliable and high-quality study support for Umass clinical investigators

Cryo-EM Core Facility

Director: Chen Xu

Phone: 774-502-6698

chen.xu@umassmed.edu

Titan Krios, Talos Arctica, Glacios, Aquilos, Vitroboots & Gatan K3 Cameras, Phase plate solution & tomography software

Crystallography & Drug Design

Director: Ala Shaqra

Phone: 508-856-2636

ala.shaqra@umassmed.edu

Provides instrumentation for determination of crystal structures using X-Ray diffraction techniques

Drosophila Resource Facility

Director: Andreas Bergmann

Phone: 508-856-6423

andreas.bergmann@umassmed.edu

Low/High Yeast Brown food and Yellow food

Electron Microscopy Core Facility

Director: Greg Hendricks

Phone: 508-856-2602

gregory.hendricks@umassmed.edu

Scanning & transmission electron microscopes with ancillary equipment for key ultrastructural procedures from the tissue to the molecular level

Flow Cytometry Core

Director: Carol Schrader

Phone: 508-856-3276

carol.schrader@umassmed.edu

Cytometry with sorting & analyzing capabilities

Humanized Mouse Core

Directors: Michael Brehm & Dale Greiner

Phone: 508-856-3130

michael.brehm@umassmed.edu

dale.greiner@umassmed.edu

Immunodeficient mice that can be engrafted with human cells/tissues for analysis of function

Image Processing & Analysis Core (iPAC)

Co-Directors: Salman Shazeeb & Manoj Saranathan

Phone: 508-856-4255

manojkumar.saranathan@umassmed.edu

Provides image analysis tools & expertise for pre-clinical & clinical imaging studies of diseases

Investigational Drug Services

Director: Brendan Sendrowski

Phone: 774-443-8667

IDS@umassmemorial.org

High quality pharmaceutical services and supports research activities for all clinical trials at UMass Chan and UMass Memorial

Leukocyte Facility

Director: Dr. Jeremy Luban

Phone: 508-856-6899

jeremy.luban@umassmed.edu

The core provides leukoreduction filters, obtained from New York Biologics, that have been used to remove leukocytes from whole units of blood obtained from normal blood donors

Mass Spectrometry Facility

Director: Vikas Kumar

Phone: 508-856-8917

vikas.kumar5@umassmed.edu

State of the art proteomics, metabolomics, and mass spectrometry imaging analyses

Media Prep Core Facility

Director: Rachel Lamson

Phone: 508-856-1745

rachel.lamson@umassmed.edu

Custom media and laboratory buffers

Metabolic Disease Research Center

Director: Jason Kim

Phone: 508-856-6840

jason.kim@umassmed.edu

Offers an array of sophisticated and standardized experiments for the purpose of investigating transgenic mouse models of diabetes, obesity, and metabolic liver disease.

Metabolomics Core

Director: Caroline Lewis Chidley

Phone: 508-856-2604

metabolomics@umassmed.edu

Caroline.Chidley@umassmed.edu

State-of-the-art instrumentation and expertise focusing on metabolomics and lipidomics; mass spectrometry methods and experimental design optimized for small molecules, and include targeted and untargeted polar metabolomics, lipidomics and stable-isotope tracing

Molecular Biology Core Lab

Director: Ellen Kittler

Phone: 508-856-6137

ellen.kittler@umassmed.edu

DNA fragment analysis, Genotyping & SPR services; host to the Oligonucleotide program providing discounted oligos

Morphology Core

Director: Yu Liu

Phone: 508-856-5639

yu.liu@umassmed.edu

Histology services including routine histologic preparations, special stains, immunohistochemistry, and frozen sections

Mouse Behavioral Core

Director: David Weaver

Phone: 508-856-2495

david.weaver@umassmed.edu

Facilitate neuroscientific research by providing facilities, equipment, and training to characterize behavior in wild-type and genetically modified mice

NE Center for Stroke Research

Director: Matt Gounis

Phone: 508-856-1884

matthew.gounis@umassmed.edu

Neuroradiology facility that offers the latest technology in image guided intervention

NMR Consortium

Director: Francesca Massi

Phone: 508-856-4501

francesca.massi@umassmed.edu

The NMR Core provides access to instrumentations to study the structure, dynamics, interaction, and organization of molecules

Optical Animal Imaging Core

Director: Mary Rusckowski

Phone: 508-856-6972

mary.rusckowski@umassmed.edu

Optical Xenogen IVIS 100 imager & Spectrum CT Imager for in vivo detection and quantification of cells

PAC-BIO Core Facility

Director: Maria Zapp

Phone: 508-856-3265

maria.zapp@umassmed.edu

Offers Next Generation SMRT Sequence Analysis in support of a wide range of research applications

PQHS-Research Informatics Core

Director: Adrian Zai

Phone: 508-856-8994

adrian.zai@umassmed.edu

Provides services such as Compliant Access to Data, Data Innovation Research and Spearhead Data Collaborations

Quantitative Methods Core

Director: Bruce Barton

Phone: 508-856-8525

bruce.barton@umassmed.edu

Clinical research support in biostatistics, experimental design, and data management

RLASTIC Core

Director: Mary Rusckowski

Phone: 508-856-6972

mary.rusckowski@umassmed.edu

Single photon computerized tomography (SPECT), positron emission computerized tomography (PET) & X-Ray computerized tomography (CT) cameras for imaging small animals

SCOPE Facility

Director: Christina Baer

Phone: 508-856-6024

christina.baer@umassmed.edu

Advanced quantitative imaging services including super-resolution, multi-photon, confocal, and live-cell microscope, plus spatial proteomics and transcriptomics

Seahorse Analyzer Facility

Director: David Guertin

Phone: 508-856-8064

david.guertin@umassmed.edu

Seahorse Cytations

Skin Diseases Research Core

Director: John Harris

Phone: 508-856-3688

john.harris@umassmed.edu

Basic & translational research on mouse and human skin including acquisition of human skin, skin fluid, or skin cells for translational assays such as flow cytometry, ELISA, or single cell RNA sequencing

Small Molecule Screening

Director: Paul Thompson

Phone: 508-856-8492

paul.thompson@umassmed.edu

Develop high-throughput screens to discover novel drugs & chemical probes utilizing in-house 1M compound collection & detection technologies

Tissue Bank

Director: Karl Simin

Phone: 508-856-3959

karl.simin@umassmed.edu

Human tissues using a dynamic collection, storage, and distribution service

Tissue Culture & Enzyme Supply

Director: David Lambright

Phone: 508-856-6876

david.lambright@umassmed.edu

Supplies, restricted/modifying enzymes, kits for DNA preparation & cleanup and related reagents

Transgenic Animal Modeling Core

Director: Heather Gray-Edwards

Phone: 508-856-4051

heather.grayedwards@umassmed.edu

Produces genetically altered mice & rats

Umbilical Cord Blood & Birth Tissues Facility

Director: Heidi Leftwich

Phone: 508-334-9186

heidi.leftwich@umassmed.edu

Providing cord blood units collected real-time from deliveries occurring at the UMass Memorial Labor & Delivery Maternity Unit

Vector Core Facility

Director: Guangping Gao

Phone: 508-856-3563

guangping.gao@umassmed.edu

Cutting-edge technologies to create and produce high quality viral vectors; provide the most suitable & efficient gene transfer vectors for research applications

PARTNER WITH US!!

Core Facilities Inquiries:

Megan Barbale
Senior Core Accountant

Beth Real
Core Accountant

Christina Zollo
Core Accountant

<https://www.umassmed.edu/research/cores>

E-mail: RCA@umassmed.edu

REV 1/26

VISIT OUR SISTER CAMPUSES

AMHERST:

www.umass.edu/ials/core-facilities

BOSTON:

<https://www.umb.edu/research/cores>

DARTMOUTH:

<http://www.umassd.edu/research/cores>

LOWELL:

www.uml.edu/research/CRF/



UMass Chan
MEDICAL SCHOOL