

New Faculty Orientation



UMass Chan Medical School

Welcome to UMass Chan Medical School



Goals for the New Faculty Orientation

- ✓ Provide an overview of UMass Chan Medical School
- ✓ Introduce our programs, processes and people
- ✓ Provide professional development information

9:00 am - 9:05 am	Welcome Mary Ahn, MD Vice Provost for Faculty Affairs
9:05 am - 9:15 am	Chancellor's Welcome Michael F. Collins, MD, FACP Chancellor, UMass Chan Medical School
9:15 am - 9:30 am	Provost's Welcome Terence R. Flotte, MD Dean, Provost & Executive Deputy Chancellor
9:30 am – 9:40 am	Overview of UMass Chan Medical School Faculty Mary Ahn, MD
9:40 am – 10:00 am	Diversity and Inclusion at UMass Chan Medical School DRIVE: Diversity, Representation and Inclusion for Value in Education Marlina Duncan, EdD Vice Chancellor for Diversity and Inclusion & Chief Diversity Officer
10:00 am – 10:05 am	BREAK
10:05 am - 10:25 am	Overview of Faculty Appointments and Promotions Emily Green, PhD, MA Associate Vice Provost for Faculty Development
10:25 am – 10:30 am	Closing Remarks
10:30 am – 11:30 pm	Breakout Rooms Sessions 1, 2 & 3 (20 mins each) with representatives from: <i>*Center for Clinical & Translational Science *Diversity & Inclusion Office *DRIVE *Foundation Relations & the Advancement Office *Grants & Contracts Administration *IT- Helpdesk *Institutional Research, Evaluation & Assessment *IRB Office *Lamar Soutter Library *Office of Well-Being *Research Core Administration *Women's Faculty Committee *Institutional Animal Care and Use Committee and Institutional Biosafety Committee * BRIDGE Innovation & Business Development *Human Resources *Admissions Committee *Investigator Career Advancement Program (iCAP)</i>

New Faculty Orientation



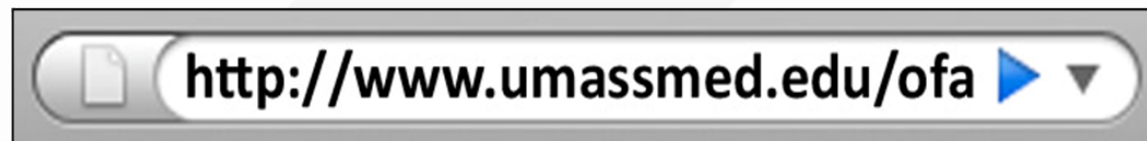
Overview of UMass Chan Faculty

For more information, visit the Office of Faculty Affairs website



OFA Quicklinks

- Annual Performance Review
- Academic Personnel Policy (APP)
- CVs and NIH Biosketches
- Individual Opportunity Plan
- Promotion Process
- Recruitment & Hiring Process
- Transition Through Retirement
- Part Time Guidelines
- Preparing for Promoti



Leadership responsibilities are divided between campus leadership & academics



Campus Leadership

Finances and Administration
Human Resources
Legal
Diversity
Communications
Advancement
Government Relations



Academics

Oversight of 3 Schools
Office of Research
UMCCTS
Office of Education
Office of Faculty Affairs

Academic Programs and the **Faculty** are managed among the three Schools.

TH Chan School Of Medicine



Dean
Terence Flotte, MD

**Academic Departments
(School of Medicine Faculty)**

**Undergraduate Medical
Education**

Graduate Medical Education

Morningside Graduate School of Biomedical Sciences



Dean
Mary Ellen Lane, PhD

**Graduate
Programs**

**Postdoctoral
Training**

Tan Chingfen Graduate School of Nursing

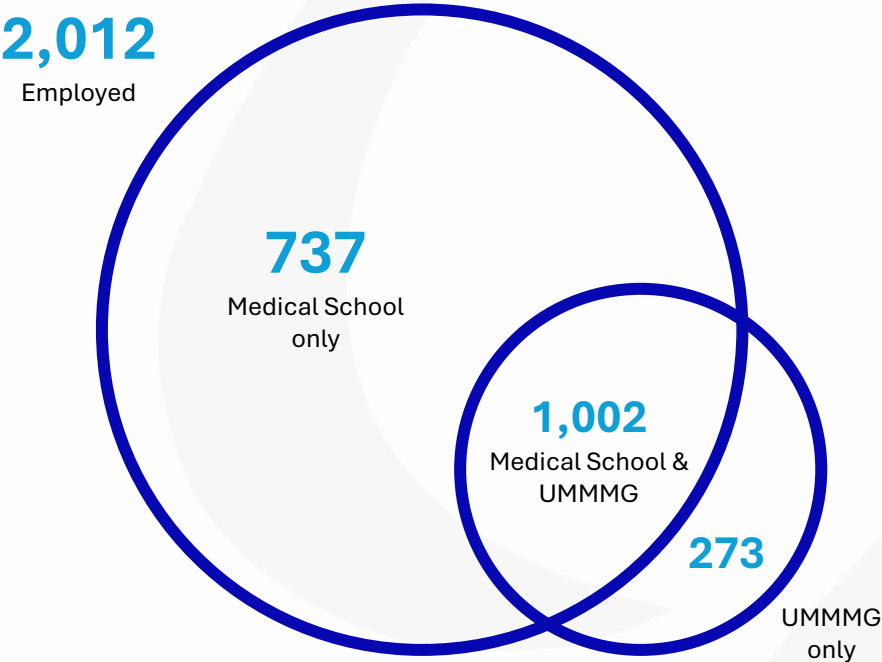


Dean
Joan Vitello, PhD

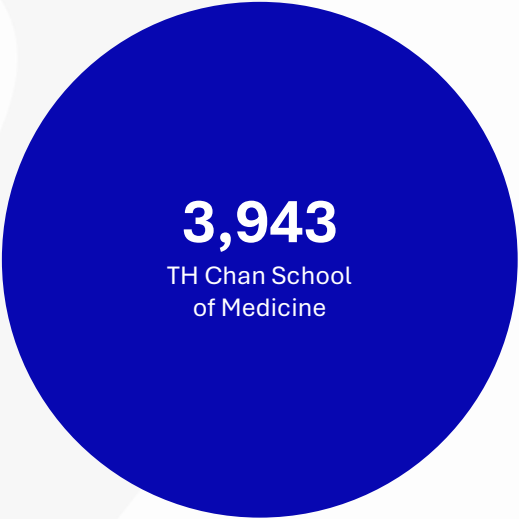
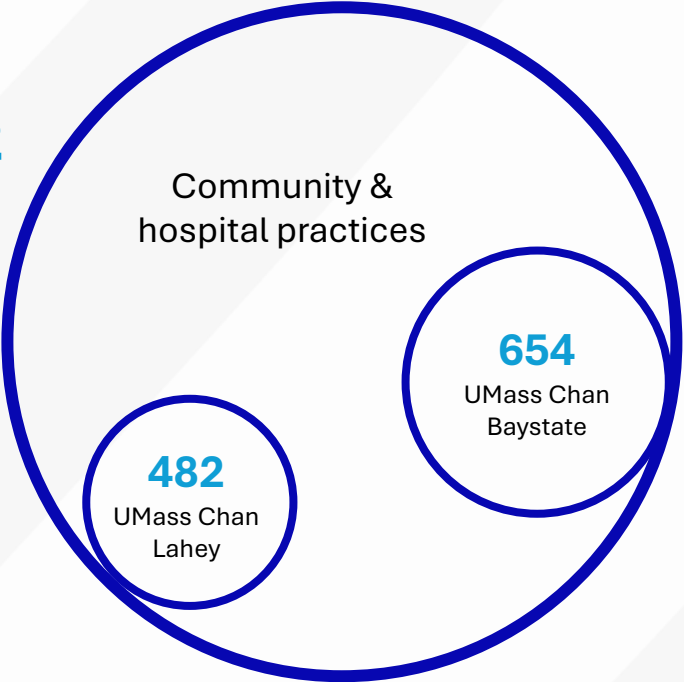
**Nursing
Faculty**

**Nursing
Programs**

4,164 faculty have UMass Chan Medical School appointments:



2,152
Affiliate



UMass Chan Regional Campuses

UMass Chan- Baystate



Andrew Artenstein, MD
Regional Exec. Dean
UMass Chan-Baystate

- **654 affiliate faculty**
- **12 academic departments**

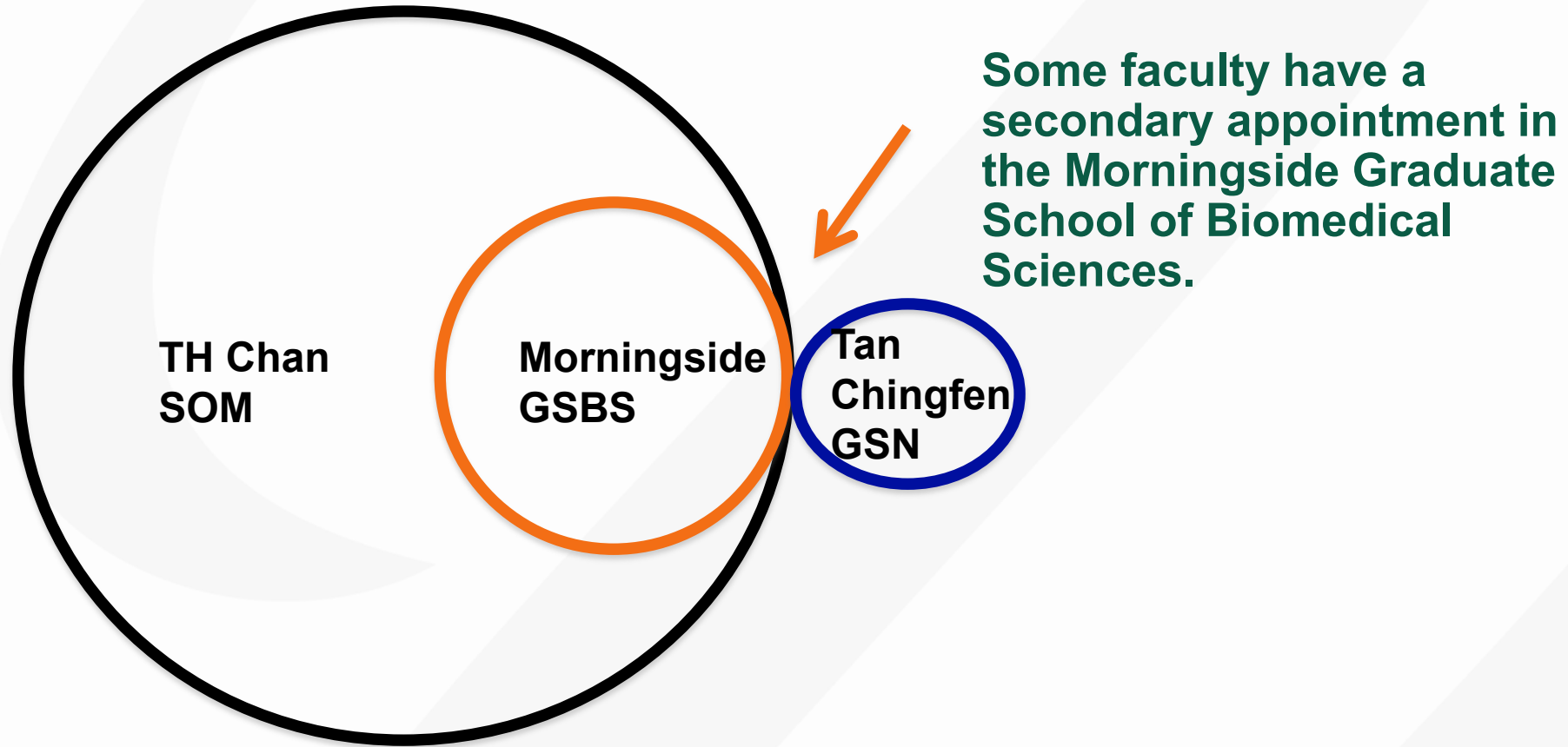
UMass Chan- Lahey



Anne Mosenthal, MD, FACS
Regional Exec. Dean
UMass Chan-Lahey

- **482 affiliate faculty***
- **8 academic departments***

All faculty have a primary appointment in either the TH Chan School of Medicine or Tan Chingfen Graduate School of Nursing



Tan Chingfen Graduate School of Nursing prepares practice-focused (DNP) and research-focused (PhD) nursing leaders

Educational Programs:

Graduate Entry Pathway (GEP) -
Prelicensure

Master of Science (MS) Program - Nursing
& Interprofessional Leadership

Post-Graduate Certificates (PGC)

Doctor of Nursing Practice (DNP) Program

Doctor of Philosophy in Nursing (PhD)

253 students

**254 faculty (28 core
faculty)***

***Nursing Schools Almanac
Ranking***

#2 in Massachusetts

#4 in New England

The Morningside Graduate School of Biomedical Sciences educates graduate students in research



PhD in Biomedical Sciences

- 12 program concentrations

Masters of Clinical Science
Investigation

Preparatory programs



311 PhD students*

77 MD/PhD students*

265 postdoctoral scholars*

391 faculty*

*As of 12/2025

UMass Chan faculty are world renowned

2 Nobel Prize for Physiology or Medicine

Craig Mello
Victor Ambros

1 Albert Lasker Award for Basic Medical Research

Victor Ambros

1 Breakthrough Prize in Life Sciences

Victor Ambros

9 National Academy of Science Members

Victor Ambros
Roger Davis
Katherine Fitzgerald
Nikolaus Grigorieff
Craig Mello
Raul Padron
Job Dekker
Phillip Zamore
Celia Schiffer

6 National Academy of Medicine Members

Robert H. Brown
Job Dekker
Kate Fitzgerald

Phillip Zamore
Roger Davis
John E. Ware

7 American Academy of Arts & Sciences Members

Victor Ambros
Roger Davis
Craig Mello
Thoru Pederson

Katherine Fitzgerald
Phillip Zamore
Allan Jacobson

3 Howard Hughes Medical Institute Investigators

Job Dekker
Nikolaus Grigorieff
Phillip Zamore



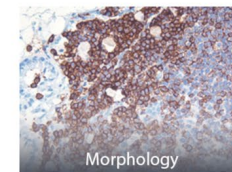
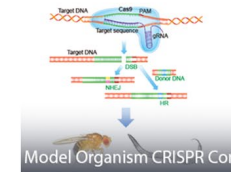
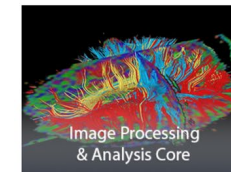
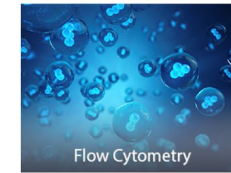
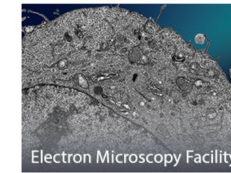
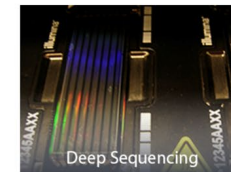
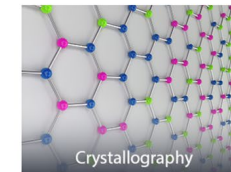
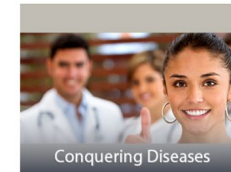
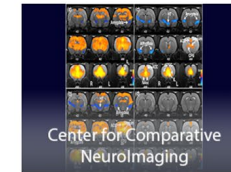
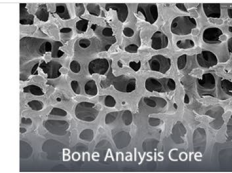
#2 in NIH Funding to New England Medical Schools

Overall Ranking	Institution	NIH Funding Total
3	Yale University	\$598 M
36	UMass Chan Medical School	\$191 M
43	Harvard Medical School	\$162 M
45	Boston University	\$140 M
62	Brown University	\$75 M
68	Dartmouth College	\$68 M
76	UConn School of Medicine/Dentistry	\$51 M
77	Tufts University School of Medicine	\$50 M
80	University of Vermont	\$42 M

How We Excel – Core Facilities

UMass Research Core Facilities

- **~50 scientific cores** available to all internal investigators for a fee-for-service charge
- Offer a wide range of services to the research community including cutting edge technologies, high-end instrumentation and technical support for basic, translational and clinical research
- Core Directors are leaders in their fields, offer consultation on projects, and are collaborative partners



Professional and Leadership Development Across the Academic Career Lifespan



We want to connect you with programs & resources to help meet your professional goals



OFA programming includes:

1

New Faculty Orientation

Offered 3x per year
Opportunity to hear from leadership
Breakout rooms with key support offices

2

Junior Faculty Development Program

Weekly sessions for 9 months
Various topics on education, scholarship & leadership
Scholarly mentored project

3

Peers for Promotion

Designed for Assistant Professors
Focus on basic file- CV, narrative statement, teaching evals

4

Summer Intensive for Presentation Skills

3-day in-person workshop
Focus on academic presentation skills

OFA programming includes:

5

Advance

Monthly virtual sessions
Focus is topics on which faculty are evaluated
(*educational effectiveness, scholarship, & academic impact*)

6

Academic Faculty Success

3-Session virtual program
Focused on academic advancement

7

Vice Chair Incubator Program

Year-long vertical leadership development program

We want to communicate with you!

Forwarding your @umassmed.edu emails

HOW TO: Forward UMass Chan Medical School emails to a different email address

1. Go to Outlook on the web (you cannot do this using the Outlook app) <https://outlook.live.com/owa/> and sign in using your UMass Chan Medical School email address (@umassmed.edu).

Forgot your UMass username or password? Contact the Help Desk: (508) 856-8643 or umasschanhelpdesk@umassmed.edu

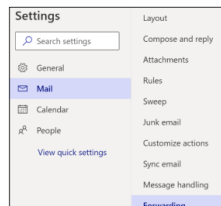
2. Once in your email account, click on the Settings gear located in the top right corner of the screen.



3. Click "View all Outlook settings" at the bottom of the menu.



4. Under Mail settings, choose "Forwarding"



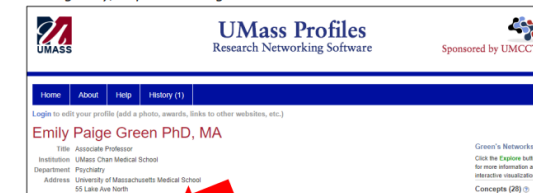
Changing your preferred email

HOW TO: Change how UMass Chan Medical School communicates with you

1. Check your faculty profile. <https://profiles.umassmed.edu/search/>



2. Check the email address listed on your profile. This email is the one UMass Chan uses to send out important information, opportunities, and resources. If this email address is not one that you check regularly, request a change.



<https://www.umassmed.edu/ofa/about/newswire/>



Annual New Faculty Reception Fall 2026 Check your emails!

- ✓ Meet the Deans, Department Chairs and other Senior Leadership
- ✓ Enjoy an IN PERSON venue for networking amongst other faculty
- ✓ Hors d'oeuvres and Drinks will be served

Your OFA Team



Mary Ahn, MD
Vice Provost for Faculty Affairs



Emily Green, PhD, MA
Associate Vice Provost for Faculty Development



**Jennifer Reidy, MD,
MS, FAAHPM**

Director, Junior Faculty Development Program

Associate Professor of Family Medicine & Community Health and Medicine



Pranoti Mandrekar, PhD, FAASLD

Co-Director, Junior Faculty Development Program

Professor of Medicine



Janice Robert
Senior Academic Personnel Specialist



Carrie Wambach
Academic Personnel Specialist



Eileen O'Brien, MA, CAGS, LSW
Academic Administrative Manager III

Any questions?

Office of Faculty Affairs (OFA):
Faculty.Affairs@umassmed.edu
508-856-3244

Visit our website
www.umassmed.edu/ofa

