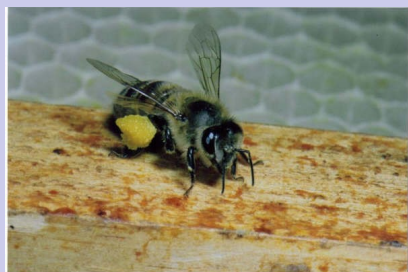


Did you know?

- To make one pound of honey, bees collect nectar from over one million flowers
- A honeybee dies when she stings
- Honeybees fly at speeds up to 15 miles per hour
- Honeybees commonly forage from two to five miles in any directions from their hive
- A Honeybee forager can carry 90% of her body weight in nectar and pollen
- Honeybees are insects which, like all insects, go through four stages of development; egg, larva, pupa and young adult
- It takes about three weeks for a honeybee to develop from an egg. Newly emerged workers work in the hive for about 3 weeks and then begin foraging for nectar and pollen for about 3 weeks
- There are three castes of honeybees-queen, worker and the drone

For more interesting honeybee information contact the Worcester County Beekeepers at worcestercountybeekeepers.com



A honeybee carrying pollen back to her hive. Photo by T. Loftus



Photo by P. Raison

How can you help the honeybee?

1. Learn about honeybees- become a beekeeper
2. Buy local honey
3. Encourage habitats for honeybees
4. Don't use pesticides



c/o Mary Duane
81 Blithewood Avenue
Worcester, MA 01604
508-335-0433
worcestercountybeekeepers.com

A club for the hobbyist beekeeper
Established 1900

Worcester County Beekeepers Association



worcestercountybeekeepers.com

About WCBA



Photo by P. Raison

The Worcester County Beekeepers has been a leader in beekeeping education to beekeepers for over one hundred years.

It is the oldest county beekeeping organization in the United States. Its members come from all over New England. Through its beekeeping school, quarterly newsletters, monthly meetings, and outreach activities the club provides ongoing education for its members.

Our mission

The WCBA shall create and further develop interest in honey bees and beekeeping in Worcester County, the Commonwealth of Massachusetts and elsewhere.

Major outreach educational activities:

- Spencer County Fair (Labor Day Weekend)
- Local fair, school and club presentations

Membership

Membership benefits

- Quarterly newsletter
- Monthly membership meetings with beekeeping speakers
- 25% discount on subscriptions to *Bee Culture* and *American Bee Journal*
- Access to the Worcester County Beekeepers Association lending library

How do I join?

Membership in the Worcester County Beekeepers Association is open to anyone with an interest in beekeeping.

Annual dues are \$15.00 per individual/family.

Send your application to:

Philip Gaudette
105 Ball St.
Northborough, MA 01532

Name _____
Address _____
City _____
State _____ Zip code _____
Phone _____
email _____

Please make checks payable to WCBA

Bee School 2016 (A beginner's course)

Who: anyone interested in learning about beekeeping

When: Thursday March 3, 2016 (and following 8 Thursdays)

Time: 7-9:30pm

Where: University of Massachusetts
Medical Center
Route 9/Lake Avenue
Worcester, MA

Cost: \$30 per individual
(includes 6 month membership)

Bee school director:

Paul and Linda O'Connor
oconnorcastle@charter.net

Topics:

Equipment and Hive assembly
Sources of Bees
Dynamics of the Hive
Challenges in Beekeeping
Spring and Summer Management
Fall and Winter Management
Honey Extraction
Floral Sources for Bees
Allergic Reactions and Management of Bee Allergies

Products of the hive

- Honey—nutritional and delicious
- Beeswax—burns cleanly and purely
- Pollen—adult and immature bees eat pollen for nutrition
- Propolis—medicinal properties