

## Population of Focus

Pernet is within the Green Island neighborhood of Worcester. The organization works closely with residents of this neighborhood.

	Worcester Overall	Green Island
Population density (per sq. mile)	4,860	6,979
Median household income (2013)	\$45,011	\$24,568
% of family households	47.7%	50.6%
% below the poverty level	25.7%	44.8%
% of poor or non-English speakers	8.0%	27.2%

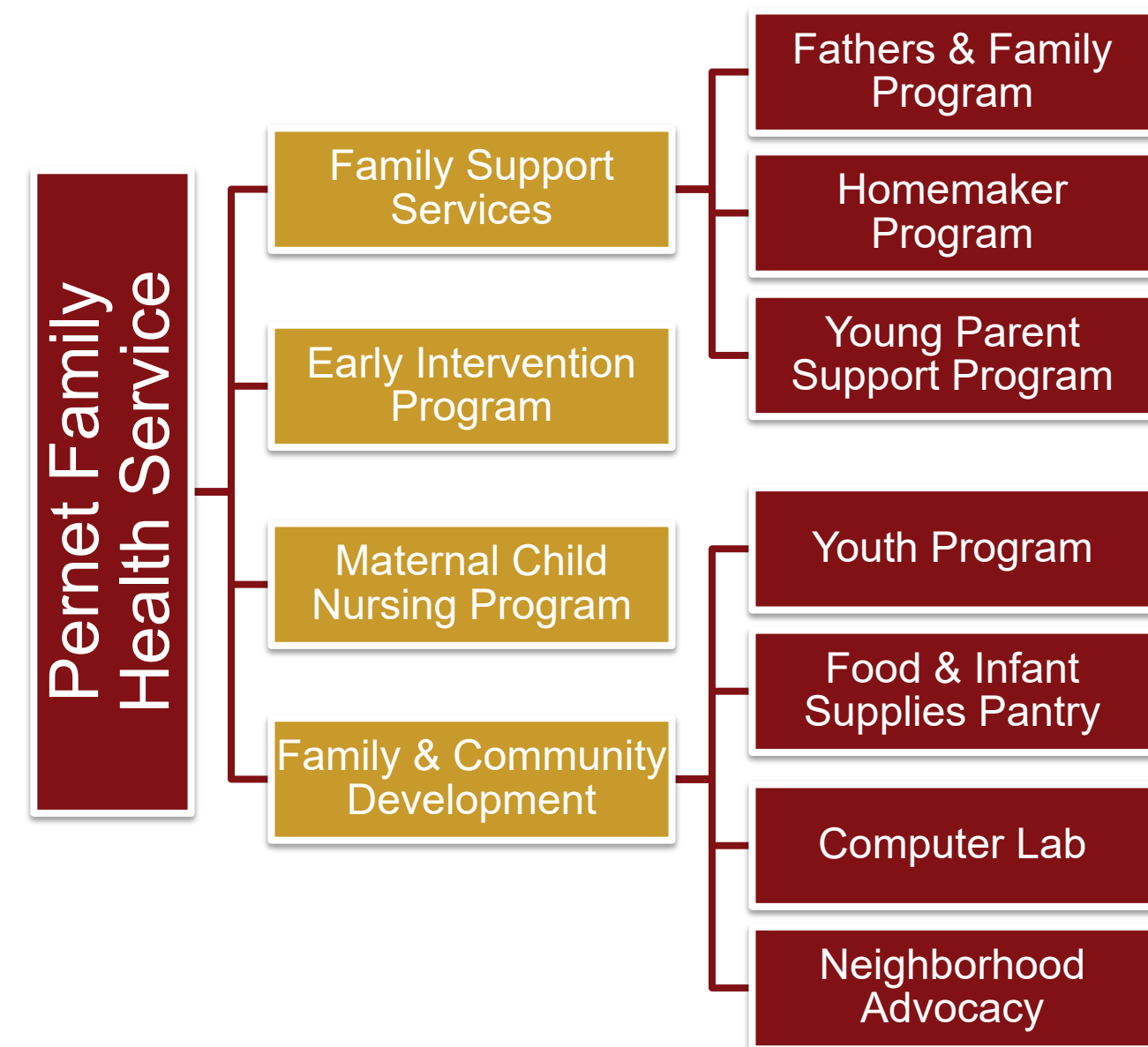
Pernet also works with families in other Worcester neighborhoods and nearby towns and with fathers in the Worcester County House of Correction.



Left: Families and children served by Pernet  
Right: Inside of the Worcester County House of Correction

## Pernet Mission & Services

Pernet Family Health Service is a non-profit home health agency working with individuals and families to provide family-centered health and social services that lead to long term strengthening and enhancement of family and community life.



## Service Project Overview

### Needs Assessment

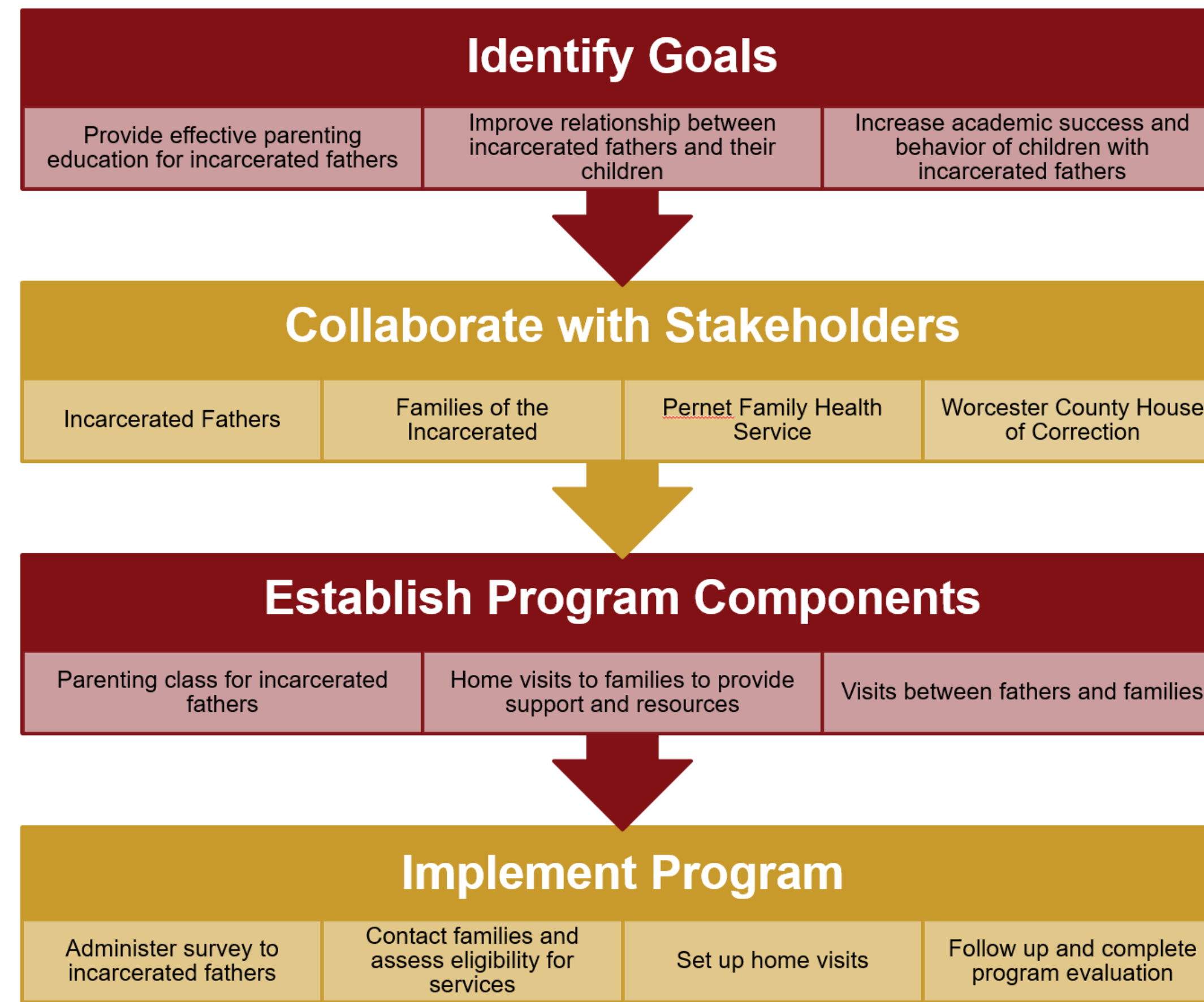
In order to address family stability, Pernet Family Health Service offers the Fathers & Family Program, a weekly parenting class for fathers residing in the Worcester County House of Correction. According to the U.S. Department of Health & Human Services, most men recently released from prison plan to live with their families after their release. However, there have been few efforts directed towards families of these fathers living in the greater Worcester community. With 245 male inmates released from prison in Worcester County in 2015, Pernet aspires to work with both incarcerated fathers and their families to foster positive relationships prior to and post-release.

### Program Summary and Interest Survey

In order to better serve the incarcerated population, Pernet will expand their current program for incarcerated fathers to include programming for families of the incarcerated. To assist with this project, our team has designed an initial survey to assess father and family interest in the program. The survey also includes eligibility criteria to better understand how many families with incarcerated fathers would be eligible for Pernet's services.

### Program Development and Implementation

Utilizing the *Toolkit for Developing Family-Focused Jail Programs* put out by the Urban Institute, our team designed a model for rolling out a program for families of inmates at the Worcester Country House of Correction.



## Evaluation & Future Directions

### 3 Key Questions

To assess the successes of this family-focused program, our team came up with the following evaluation questions.



Our team has compiled a series of assessment tools for Pernet to utilize after implementing the program. These assessments include measures of parental bonding and children's anxiety levels.

Examples of Assessment Tools: Parental Bonding Instrument (left) and Spence Children's Anxiety Scale

## Acknowledgements

We would like to thank everyone at Pernet Family Health Service and the Population Health Clerkship Leadership. Special thanks to Sheilah Dooley, Chris Nelson, and Emily Linhares for their guidance on this project.

## Resources

City-Data.com. Green Island neighborhood in Worcester, MA 01604, 01608, 01610 detailed profile. Web. 27 October 2016.

Massachusetts Department of Correction (2016). Prison Population Trends 2015.

Parker, G., Tupling, H., & Brown, L.B. (1979). Parental Bonding Instrument. *Black Dog Institute*.

Peterson, B., Cramer, L., Kurs., E. & Fontaine, J. (2015). Toolkit for Developing Family-Focused Jail Programs. *Urban Institute: Children of Incarcerated Parents Project*.

Spence, S.H. (1994). Spence Children's Anxiety Scale. *SCAS Website*.

U.S. Department of Health and Human Services (2008). Incarceration and the Family: A Review of Research and Promising Approaches for Serving Fathers and Families.

Worcester County Sheriff's Office (2016). *Worcester County Sheriff's Office Mission & Services*.