

Identifying Barriers to Recovery in the Worcester Community

James Shen^{3,4}, Jordan Smith^{3,4}, Laurel Banach^{3,4}, Lyndia Personnat^{3,4}, Natalie Fremont-Smith^{3,4}, Tomas Rodriguez^{3,4}, Dr. Jaime Vallejos^{2,3}, Dr. Mattie Castiel¹

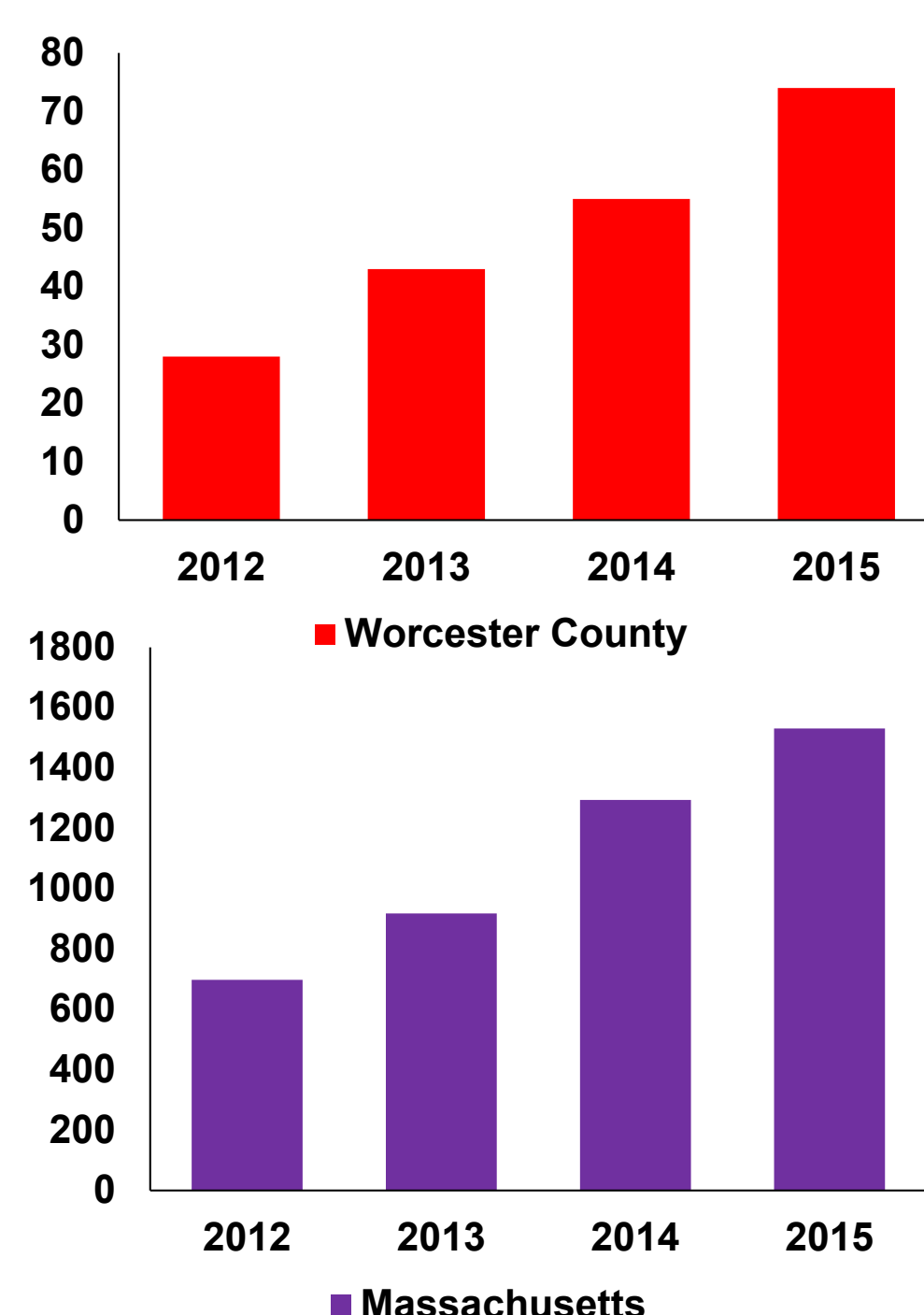
Worcester Department of Health & Human Services¹, UMass AHEC Network², UMass Medical School³

All members contributed equally to this work⁴



Opioid Crisis

Unintentional Opioid Overdose Deaths



*Data courtesy of the MA Department of Public Health

Population Health Clerkship Description

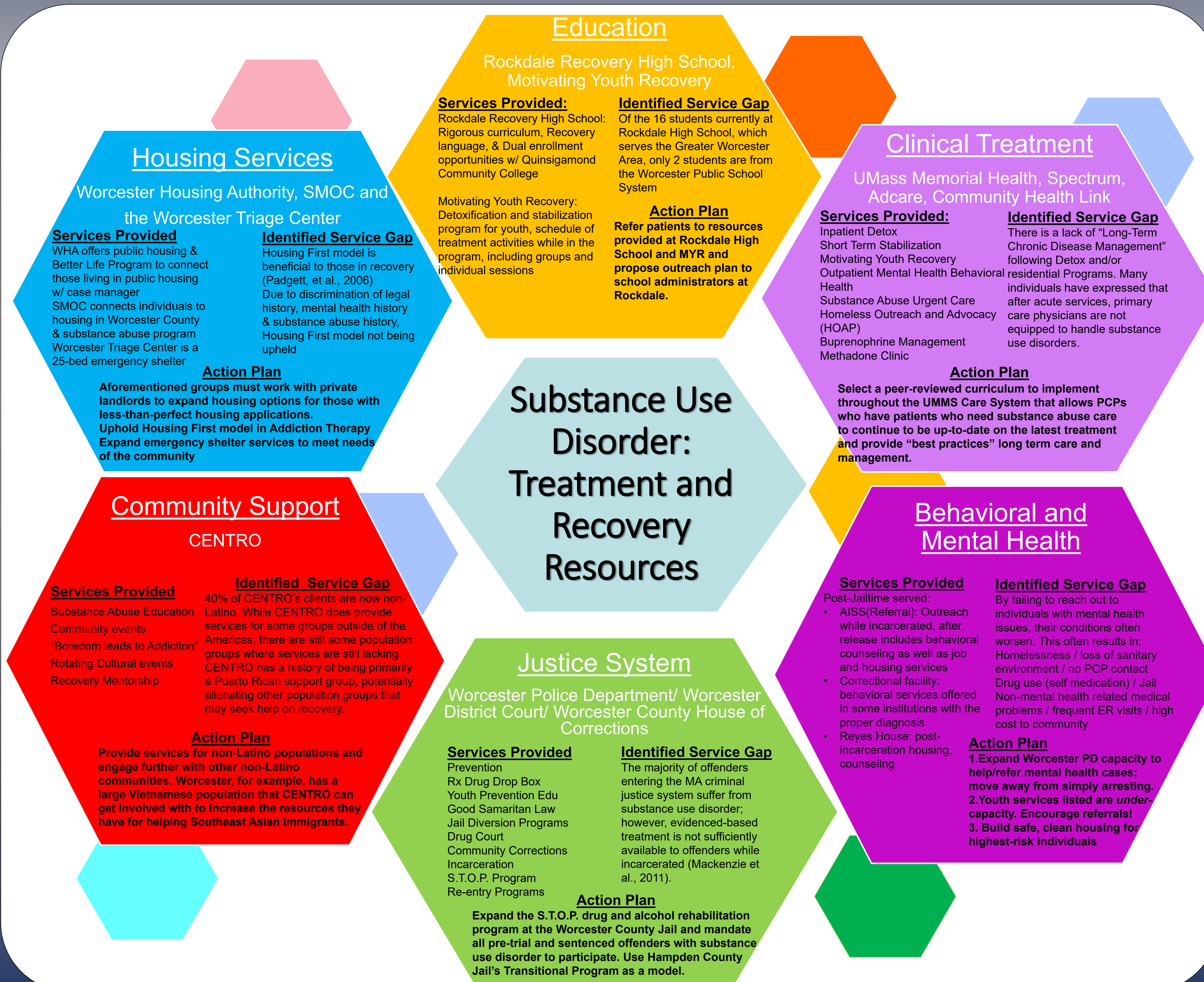
During the course of our field work component, we toured and engaged with over 25 agencies, public and private, around the broader Worcester Community that provide services related to the opioid crisis, and more broadly related to substance use disorder.

Service Project

Goal: To generate a community-specific resource infographic that consolidates information related to available resources and gaps in care or substance abuse

Progress: Prototype of the infographic was generated (pictured here)

Outcome: Share with community partners via survey and generate feedback to modify graphic for maximal utility



Reflections & Recommendations



Treatment of Substance Use Disorders is complex and requires collaboration, compassion and understanding. Awareness of each individual patient's needs is the first step toward recovery.

We recommend that all students and physicians in the UMass System receive continuing education about substance abuse in the Worcester community.

References

- Addiction Services. Available at: <http://www.smoc.org/addiction-services.php>. (Accessed: 30th October 2016)
- Centroinc.org (Accessed 30th October 2016)
- Mackenzie, D. L., Mitchell, O., & Wilson, D. B. (2011). The Impact of Drug Treatment Provided in Correctional Facilities. *Handbook of Evidence-Based Substance Abuse Treatment in Criminal Justice Settings Issues in Children's and Families' Lives*, 183-203. doi:10.1007/978-1-4419-9470-7_11
- Motivating Youth Recovery (MYR). Available at: <http://www.communityhealthlink.org/chl/substance-abuse-treatment-and-recovery-programs/adolescent-substance-abuse-treatment/myr-menu>. (Accessed: 30th October 2016)
- Padgett, D. K., Gulcur, L., & Tsemberis, S. (2006). Housing first services for people who are homeless with co-occurring serious mental illness and substance abuse. *Research on Social Work Practice*, 16(1), 74-83.
- Parthasarathy S, Mertens J, Moore C, et al., Utilization and cost impact of integrating substance abuse treatment and primary care, *Medical Care*, 2003;41(3):357-367.
- Opiate Treatment - Spectrum Health Systems, Inc. Available at: <http://www.spectrumhealthsystems.org/programs/opiate-treatment>. (Accessed: 30th October 2016)
- Our Mission. Available at: <http://www.communityhealthlink.org/chl/index.php/about-chl-menu/2-uncategorised/53-our-mission>. (Accessed: 30th October 2016)
- Quinn, A. E., Rubinsky, A. D., Fernandez, A. C., Hahn, H. C. & Samet, J. H. A Research Agenda to Advance the Coordination of Care for General Medical and Substance Use Disorders. *Psychiatric Services* appi.ps.2016000 (2016). doi:10.1176/appi.ps.201600070
- Saltz, R. et al. Chronic care management for dependence on alcohol and other drugs: the AHEAD randomized trial. *JAMA* 310, 1156-1167 (2013).
- U.S. Preventive Services Task Force, Screening and behavioral counseling interventions in primary care to reduce alcohol misuse: recommendation statement, *Annals of Internal Medicine*, 2004;140(7):554-556.
- Worcester Housing Authority :: Mission Statement. Available at: http://www.worcester-housing.com/mission_statement.html. (Accessed: 30th October 2016)
- Worcester - MASS Recovery High Schools. Available at: <http://www.massrecoveryhs.org/schools/worcester>. (Accessed: 30th October 2016)