

UNIVERSITY OF MASSACHUSETTS MEDICAL SCHOOL  
OFFICE OF GRADUATE MEDICAL EDUCATION

55 Lake Avenue North  
Worcester, MA 01655-0002  
508.856.2903 (office) 508.856.6420 (fax)



APARTMENT LISTINGS 2017

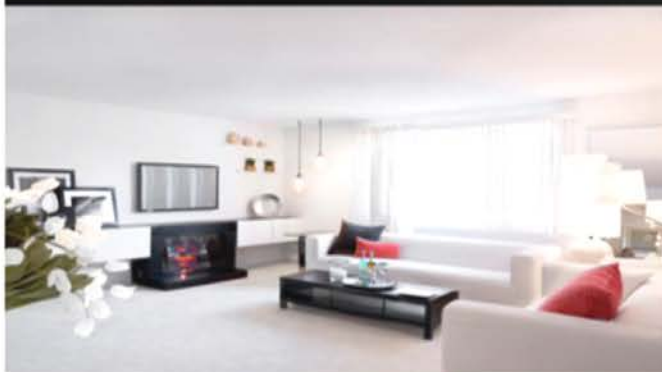
These listings are provided to assist you in your search for housing in the Worcester area. They **DO NOT** represent specific endorsements by the University of Massachusetts Medical School and the Medical School is not responsible or liable for any off-campus housing problems. Private apartments for rent and houses and condos for sale are posted on the BLS Vista website, on the bulletin boards near the Student Lounge in the Medical School, across from the cafeteria, in front of the Graduate Medical Education office, and throughout the Medical Center. You may also wish to check the daily Worcester Telegram, especially the Worcester Sunday Telegram, for housing availability. It is highly recommended that inquiries be made with your Program Coordinator, friends, and/or other residents and fellows regarding location prior to signing any lease.

**\*\*Please note prices are subject to change\*\***

## ABBIE SUTTON & SHERIDAN APARTMENTS

**Sutton Apartments**  
21 Harley Dr Worcester MA 01606  
(508) 853-1144  
www.suttonapts.net

**Sheridan Apartments**  
43 Sheridan Dr Shrewsbury MA 01545  
(508) 845-9500  
www.sheridanapts.net



*Yes,*  
We Are Luxurious  
and...  
**You can afford us!**

### JUST 3 MINUTES TO UMASS!!!

*Yes,* UMASS residents, medical and graduate students are pre-approved and \$299.00 moves you in! Other specials may apply. Live among many of your classmates with unbeatable "Special Pricing" & custom lease terms. Save thousands of dollars! Yes, we pay for your entire heating bill!

*Yes,* convenient roundtrip transportation to UMASS is available via bus. Why pay for parking, gas or walk and slip in the dark? Our new "roommate apartments" (to save even more money) are now here.

*Yes,* we want our residents to sleep soundly. There will be no sirens, walking dogs or barking. As one resident told us "it is so peaceful, I can sleep at odd hours after my calls."

Sutton & Sheridan are tucked away on acres of rolling greens & flowered gardens in affluent, exclusive neighborhoods with Olympic size swimming pools, tennis courts, saunas, gym, Blue Ray & DVD lending libraries. We make life easy with our Award Winning 24 hour FIVE Star Maintenance and concierge service!

Great locations near all major highways, on bus line & more...

**Privately owned and managed, welcome to our family!**

**TEXT: UMASS TO 508-853-1144**



#### UMASS Preferred Employer Pricing:

<b>Studios</b>	<b>\$1150<sup>sm</sup></b>
<b>One Bedrooms</b>	<b>\$1350<sup>sm</sup></b>
<b>Two Bedrooms</b>	<b>\$1425<sup>sm</sup></b>

**Includes Heat, Hot Water, Parking and Storage!**

\* All amenities, rates, specials subject to change



## AUDUBON PLANTATION RIDGE

Heated Pool 🌿 24 hr Fitness 🌿 W/D in Unit 🌿 Bark Park 🌿 Wi/Fi Café 🌿 Online Rent Pay 🌿 Single Stream Recycling



Offering spacious floor plans, exceptional amenities, a convenient location and luxury apartment rentals, Audubon Plantation Ridge is an ideal apartment community in the City of Worcester you'll be proud to call home. When it's time to relax, you'll appreciate our heated swimming pool, tennis courts, 24-hour fitness center, playground, picnic area and bark park. For your convenience, we have elevator buildings, plenty of parking, 24-hour Wi-Fi Lounge, and round-the-clock emergency maintenance. Don't forget, here at Audubon Plantation Ridge your pets are welcome!

Only 1/2 Mile from UMASS

### Heat and Trash Included

8 Unique Spacious Floor Plans

1 bedroom/1 bathroom

2 bedroom/2 bathrooms

### Umass Preferred Employer Special

508.799.7299

Call Now!



[facebook.com/audubonplantationridge](https://facebook.com/audubonplantationridge)



AUDUBON  
PLANTATION RIDGE

511 Plantation Street | Worcester, MA 01605 | 508.799.7299 | [www.audubonplantationridge.com](http://www.audubonplantationridge.com)



### **Welcome to Audubon Shrewsbury Apartments!**

We offer thoughtfully designed 1, 2 & 3-bedroom apartment homes featuring several different floor plans to suit your individual needs. Our fabulous apartment homes feature distinctive amenities such as modern kitchens, patios or balconies, central air, spacious walk-in closets, full size washers and dryers in each home and so much more! Our professional management staff and emergency maintenance crew are here to meet your every need!

**Less than 5 miles from UMASS!**

**UMASS PREFERRED EMPLOYER SPECIAL!**

**Fitness Center**

---

**Heated Pool**

---

**Washer/Dryer in Unit**

---

**Online Rent Pay**

---

**Indoor Basketball Court**

---

**Pet-friendly**

### **CALL US TODAY!**

890 Hartford Turnpike  
Shrewsbury, MA 01545

[www.audubonshrewsbury.com](http://www.audubonshrewsbury.com)

**508-842-3622**



# Micozzi Management

Real Estate

Micozzi Management  
50 Elm Street, 3<sup>rd</sup> Floor  
Worcester, Massachusetts 01609  
micozzimanagement.com  
508.798.8406

## **PROPERTIES THROUGHOUT WORCESTER, SOME AS CLOSE AS 1/2 MILE FROM UMASS !!!**

- Newer amenities and updated units provide easy living!
- All properties have 24 hour emergency maintenance!
- On Site laundry facilities are available at all properties!
- Snow and rubbish removal are included with all apartments!
- All apartments are wired for cable & internet making for an easy transition!
- Most units have additional storage, ample closet space and Central/In unit A/C!
- Heat and Hot water is included with many of the units!
- Our prompt, friendly and knowledgeable staff can make your life easier!
- Ask about our current move in specials and incentives for UMASS affiliates!!



Micozzi Management, Inc. is the premier owner and operator of thousands of apartments in Massachusetts and Rhode Island. Live as close as a ½ mile to UMASS or if you don't mind a short commute live in one of our more suburban settings with river views or on site pools for summer fun!

Our excellent pricing, locations and close proximity to local amenities and area highways set our properties aside from all others! We have professional services provided to you by our award winning and dedicated team. UMASS affiliates are highly regarded and we have been servicing you for years!

[micozzimanagement.com](http://micozzimanagement.com)



# THE FAIRWAYS



ONE, TWO AND THREE BEDROOM TOWNHOMES

EXCLUSIVE DISCOUNTS FOR ALL UMASS STUDENTS AND EMPLOYEES!!!

WE ARE LOCATED JUST MINUTES AWAY!!

~HEAT/HW & GAS INCLUDED

~STATE OF THE ART FITNESS CENTER

~WASHERS AND DRYERS (SELECT HOMES)

200A EAST MOUNTAIN STREET, WORCESTER, MA 01606 (508) 853-1551

[WWW.THEFAIRWAYS-APARTMENTS.COM](http://WWW.THEFAIRWAYS-APARTMENTS.COM)





*Friendly Staff*



*Value for money*



*Convenient*



BY CHOICE HOTELS

*Exceptional Service!*

## SUBURBAN EXTENDED STAY



University of  
Massachusetts  
UMASS Medical School

**SPECIAL MONTHLY RATE**

**\$72.00** /day (30+days)

*Price will defer upon length of stay.*

*Please call the Hotel directly*

*The Suburban Extended Stay, conveniently located only a quarter of a mile away from the UMass Medical Center and School, will bring a unique charm to your stay. Our guest rooms, service, and amenities are designed to make your stay a wonderful one:*

- Renovated lobby and guest rooms
- Full Kitchens
- Free high speed internet access
- Complimentary parking
- 24 hour Laundry facility
- 24 hour exercise room
- Free membership to W Fitness during stay
- Basic kitchen amenities included
- Outdoor swimming pool (seasonal)
- Full service every 5 days & Trash/Towel Service daily upon request
- Complimentary Grab n' Go Breakfast items
- Daily complimentary coffee
- Pet friendly
- Conveniently located along UMass free shuttle route
- Wednesday Wild Wild West Happy Hour
- No contracts
- No first and last deposits for extended stay guests

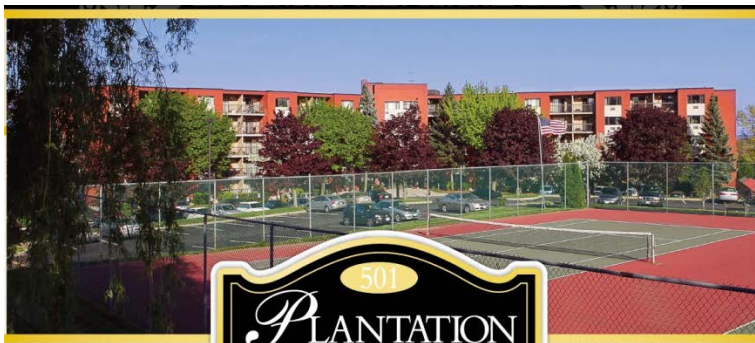
*Weekly extended stay rates available. Please contact Marie Flavin, Sales Manager, for all your accommodation needs.  
email: [kpelletier@globalvisionhotels.com](mailto:kpelletier@globalvisionhotels.com)*

*\*Restrictions applied.*

*This is a promotional monthly rate based on availability.*

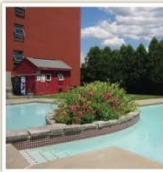
50 Oriol Drive  
Worcester, MA 01605  
Phone: 508.852.2800  
Fax: 508.854.1785





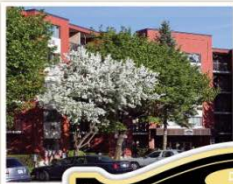
## CITY CLOSE... *Country Quiet*

NEWLY-RENOVATED 1 & 2 BEDROOM APARTMENT HOMES\*



SPECTACULAR VIEWS | HEAT & HOT WATER INCLUDED | GREAT FOR ROOMMATES

## SUPERB VALUE... *Unsurpassed Convenience*



## *Fall in Love with a Beautiful Place to Live*

501 Plantation Street • Worcester, Massachusetts 01605

Plantation Towers apartment homes are set back from Plantation Street on a lovely, winding drive on one of the most prominent hillsides in Worcester, offering spectacular views in all directions. The community is adjacent to the Worcester BiTech park and across from the University of Massachusetts Medical School and Medical Center.



*Call Today to Schedule a Tour!*

**PH: 508-752-6800 • FX: 508-752-0120**

email: [plantation\\_towers@related.com](mailto:plantation_towers@related.com)

**WORCESTER'S MOST DESIRABLE ADDRESS!**

Conveniently located off Route 9, with easy access to Routes 290, 495 and the Mass Turnpike. Just minutes to shopping & dining.

**Property Directions From East:** Take Route 290 W, to exit 22 N. Go right off ramp 6/10 mile to stop light and turn left on Plantation St.  
**Property Directions From West:** Take Route 290E, to exit 21, marked Plantation Street. Go right off ramp approx. 1/2 mile on right.

WiFi



\$0

No Security Deposit



Fitness Center



½ mile from Umass



# Princeton Place Apartments

285 Plantation Street, Worcester, MA

Two Bedrooms starting at \$1329\*

One Bedrooms starting at \$1199\*

Don't forget to mention UMASS for Information on Discounts

## Community Features:

- ✓ Walk to UMass
- ✓ Swimming Pool & Tennis Court
- ✓ Smoke-Free
- ✓ Cats & Dogs Welcome
- ✓ Online Rent Pay
- ✓ Resident Events
- ✓ Free Bike Share

## Meet our team & learn about us:

- ✓ [facebook.com/princetonplaceapts](https://facebook.com/princetonplaceapts)
- ✓ [www.apartmentratings.com](http://www.apartmentratings.com)
- ✓ [www.princetonproperties.com](http://www.princetonproperties.com)

Text **UMASSAPT1** to 88000

Call 508-754-6777 or email [pplace@princetonproperties.com](mailto:pplace@princetonproperties.com)



# Windsor Ridge at Westborough

## Westborough's Premiere Town Home Community

- ◆ 1, 2 & 3 bedroom town homes
- ◆ Private entry ways
- ◆ Private patios (grilling allowed!)
- ◆ 24 hour fitness center
- ◆ Swimming pool & grilling station
- ◆ 24 hour emergency maintenance
- ◆ Bark park & dog walking stations
- ◆ Package pick-up
- ◆ Professional onsite management
- ◆ NEW renovations!
- ◆ Stainless steel appliances!

**Ask about our UMASS discount!**

**Award Winning School District!**

**Only 15 minutes from UMASS!**

**Beautiful Town Home Living!**

Call today for pricing and availability!

508-366-1515 | [ridgemkt@windsorcommunities.com](mailto:ridgemkt@windsorcommunities.com)

[www.WindsorRidgeAtWestborough.com](http://www.WindsorRidgeAtWestborough.com)





## Welcome to our Preferred Employer Program!

Ashford Crossing Apartments in Shrewsbury offers elegant apartment living and is a great place to call home. Enjoy a relaxing atmosphere, away from the busy workplace, just ask our residents! They might say that there are plenty of exciting things to do and places to go right here in our neighborhood, and when it's all been seen and done, Ashford Crossing Apartments is an extraordinary place to come home to. You may also hear them remark on our second to none amenities offered to every resident, every day!

**All of your employees will only have to pay a \$1 security deposit and 1\$ key fee!!!**

To mention just a few, Ashford Crossing Apartments features:

- Luxurious One and Two Bedroom Apartment Homes
- Modern kitchens & bathrooms
- Large walk-in closets
- High Speed Internet Available
- Laundry in every building
- Outdoor pool and 24-hr modern gym
- BBQ stations free for resident use
- Tennis Court
- Basketball Court
- Spectacular Clubhouse with WIFI available
- Free parking
- Playground
- Pet friendly community with fenced in dog area
- Fully Furnished Guest Suite available for rent

Ashford Crossing Apartments is conveniently located only minutes away from fine restaurants, shopping, major local employers and many major highways.

Ashford Crossing has an atmosphere quite unlike any other apartment community in the area. Ashford Crossing's professional team is dedicated to providing you with superior service and creating a care free lifestyle that you and your employees deserve.

We would love to partner with you, in providing your employees a great place to live, with great service, superb amenities and conveniently located within minutes to their offices. As a preferred employer your associates will be able to enjoy savings when they rent with us.

I have included some of our brochures for your review and to share with your associates. I am extending an invitation to you and your employees to come and see why Ashford Crossing is The Place to Call Home in Shrewsbury, MA.

Kind Regards,

Shane Kelly  
Property Manager  
Ashford Crossing  
[ashford@chartwellholdings.com](mailto:ashford@chartwellholdings.com)



**Stone Gate**  
**Marlborough, MA 01752**  
**options!**

Phone: 508-787-1005

Web: [www.livestonegate.com](http://www.livestonegate.com)

Email: [stonegate@bhres.com](mailto:stonegate@bhres.com)

**1, 2, and 3 bedroom floor plans along with unique loft style**

Thank you for your interest in Stone Gate Apartments, Metrowest's newest luxury apartment community! Stone Gate is more than a place to live, it's a fashionable lifestyle residence designed with you in mind. It's about combining location with compelling architecture. Stunning design goes hand in glove with the most superior interior touches offered in the **Marlborough area, just minutes from Routes 9, 495, 290, and the Mass Pike!**

All of our apartments feature full sized washers and dryers, fully equipped gourmet kitchens, intrusion alarms, individual hot water heaters, over-sized walk-in closets, garden style soaking tubs, dramatic 9 foot ceilings with decorative crown molding, and so much more! Select units feature gas fireplaces with mantels, built in bookshelves and desks, island kitchens, and vaulted ceilings over open living areas.

We also offer a wide variety of amenities here at Stone Gate, which are all included in your monthly rental rate! Our state of the art clubhouse features a 24-hour executive business center, 24-hour fitness center, resort-style heated swimming pool with heated spa, men's and women's cabana with showers, barbeque grilling area, fully equipped playground, clubroom with kitchen and fireplace, and free dry cleaning drop-off and pick-up.

Contact us today about your new home!

---

### **Bell Marlborough Apartments**

*20 Applebriar Lane*

*Marlboro, MA 01752*

Phone (508) 481-9133

***20 minutes to Umass!***

**1bedroom 818 sq ft starting at \$1570**

**1 bedroom with den 900 sq ft starting at \$1689**

**2 bedrooms 1096 sq ft starting at \$1960**

**2 bedroom townhouse 1446 sq ft \$2280**

Elegant, beautifully appointed and spacious, split level design apartment homes 85% with attached garages. Originally built as condos with a private balcony or patio with serene wooded views. Cathedral Ceilings and wood burning fireplaces in select units and laundry appliances in all. Enjoy the Weber gas grills at our HEATED POOL or cancel your gym membership and utilize our FULL CIRCUIT FITNESS CENTER W/FREE WEIGHTS open 24 hrs! The CLUBHOUSE is also included with BILLIARDS, 65" PLASMA TV, full kitchen, FIREPLACE and LARGE OUTDOOR DECK for your private party AT NO CHARGE! FREE movie rentals, coffee bar, notary services and next day DRY CLEANING (fees apply)!

Come in for your private tour and see what everyone is talking about!

CONVENIENTLY LOCATED less than 1 mile from 495 and route 20 West. Professionally managed by Sentinel Corp. Equal Housing Opportunity.



---

**The Commons at Haynes Farm**  
100 Arbor Drive  
Shrewsbury, MA 01545  
508.842.4700

Managed by: Home Properties Community  
Visit us at: [www.CommonsAtHaynesFarm.com](http://www.CommonsAtHaynesFarm.com)

1, 2, and 3 bedroom apartments-**ASK ABOUT OUR UMASS PREFERRED PARTNERSHIP SAVINGS!**

Looking for a short commute without giving up the comfort of tranquil living...look no further! Nestled in a quiet residential neighborhood less than 10 minutes from UMASS, we have provided housing for UMASS Medical Center affiliates since 1991. Choose the size apartment that suits your needs, your new home will boast a brand new gourmet kitchen with gas cooking, spacious floor layout, modern bathrooms, huge walk-in closets and your own washer and dryer. Relax in our seasonal swimming pool; enjoy our 24-hour fitness center and utilize our brand new conference center with free Wi-Fi access. We are pet friendly! Conveniently located, minutes from Rt. 495, 9 and the MA Pike. Call today to schedule a private tour!



**Eastview Apartments**

61 Frank Street Unit 5

Worcester, MA 01604

Phone: 508-755-7721

[eastviewoffice@churchillforge.com](mailto:eastviewoffice@churchillforge.com)



Studio:	\$700
1 Bedroom Junior:	\$825
1 Bedroom:	\$925
2 Bedroom:	\$1050

**Walk to school!** We are located across Rte. 9

from the UMass Medical Center as well as minutes from Routes 20, 290, 495 and the Mass Pike. We are also within two miles of the Commuter Rail's gorgeously renovated Union Station. Luxury living in our spacious apartments with hot water included. Fully appliance kitchens, plush wall-to-wall carpets, electric heating, laundry facilities in every building, and parking included. Relax this summer in our outdoor pool or our beautifully manicured lawns and courtyards. Tennis court and picnic areas also available. We offer 24-hour maintenance,

on-site security services, and on-site Management staff to attend to your every need.

---

### Redwood Hills Apartments

**382 Sunderland Rd. Unit 25C (Model Office) Worcester, MA 01604**

Contact Donna Whalen, Leasing Associate, for more information.

[DWhalen@thehamiltoncompany.com](mailto:DWhalen@thehamiltoncompany.com)

Office: 508-756-0199

1 Bedroom \$1125

2 Bedroom Standard \$1275

2 Bedroom w/Balcony & Fireplace \$1400

Heat, Hot Water and parking included

Our community features pool, tennis court, BBQ area, fully applianced kitchens with built in microwave and dishwasher. Large living area with blinds, A/C unit, lots of closet space and cable ready. We are located off of Grafton St., RT122 and minutes from the Mass Pike, RT9 and 20, 290 and just 45 minutes from Boston. A great, quite place you can call home.

