



**Certificate of Training in
Primary Care Behavioral Health
Course Guide**

Course website:

<https://umassmed.umassonline.net>

Table of Contents

Requirements to Receive Course Credit	3
Continuing Education Information	3
Course Overview	3
Faculty	3
Technological Requirements - Course Modules	4
Logging Into the Course	4
Navigating through the course Technological	5
Requirements - Q&A Sessions	7
Course Evaluations	9
Questions and Support	9

Requirements to Receive Course Credit

The checklist below will help you to keep track of the required course activities. In order to receive a certificate of completion you must complete all of the activities below.

- ☐ View each course module and complete all quiz questions and any assignments
- ☐ Complete the final course survey
- ☐ Completion deadline is May 25, 2018 (you may finish before this!)

- CEs/certificates are emailed out 6-8 weeks after the deadline date, no sooner -

Not required, but strongly recommended

- ☐ Attend the scheduled Q&A sessions online
- ☐ Participate in the Course Discussion Board beyond the assigned tasks
- ☐ Provide feedback to CIPC about your course experience either via email or by filling out the surveys in the course.

Continuing Education Information

<http://www.umassmed.edu/cipc/pcbh/pcbh-ce-cme/>

Course Overview

The Center for Integrated Primary Care at the University of Massachusetts is proud to offer this Certificate course in Primary Care Behavioral Health, designed for healthcare professionals involved in Behavioral Health.

The full Certificate course consists of 22 online modules that can be viewed at your convenience during the time the course is open. It takes about an hour and a half to complete each module.

Faculty

<http://www.umassmed.edu/cipc/pcbh/pcbh-faculty/>

Technology Requirements - Course Modules

We use UMass Medical School's Learning Management System, BlackBoard, to contain and deliver our courses.

Supported Browsers

Blackboard supports four primary browsers.

[Run the browser checker](#) to see whether Blackboard Learn supports your browser and operating system.

To learn more about Blackboard's general browser support policy as well as information about Javascript, Cookies, and other software, see [Browser Support Policy](#).

These desktop browsers work best with Blackboard Learn 9.1 Service Pack (SP) 14.

- Firefox 24® and later
- Chrome™ 30 and later
- Safari® 6 and later

Safari for Windows is no longer supported by Apple and is not supported for the new Blackboard Learn experience.

- Internet Explorer® 9 and later

Some configuration options for Internet Explorer may make certain features of Blackboard Learn difficult to use.

Logging in to the Course

Logging in for the first time:

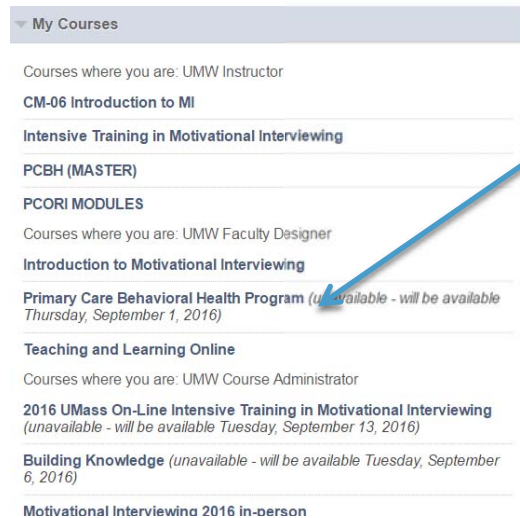
- a. Go to <https://umassmed.umassonline.net>
- b. Click on **Need Your Password?** Under the Blackboard Learn login area.
- c. Using Option 1, enter your first and last name and your username, which is the email address you used to register for the course. For example, when logging into Blackboard Learn, you will enter that full email address in the Username field (i.e., john.doe@gmail.com).
- d. You will be sent an email immediately which will allow you to set your password.
- e. Follow the instructions in the email to set your password.

Note - During registration, it is important to double check to make sure you've entered the right email address. Also for those using organizations/company's email addresses, there could be a spam filter that prevents you from receiving emails. Please be sure to check your junk mail to see if information on how to set your password has been filtered as a junk mail.

Here is a link to a brief video about logging in to Blackboard [CLICK HERE](#)

Navigating through the course

Once you are logged in, click the course you are enrolled in from the list in “My Courses”



You should then see a list of the modules that make up the course on the left side of the screen that opens. Click on the module you would like to begin with—we recommend taking the modules in the order in which they are presented in the list as the Q&A sessions will be geared toward that progression.

Introduction to Integrated Primary Care

Module Information--Introduction to Integrated Primary Care

Learning Objectives

- Describe data indicating a health care crisis in the US and the costs and consequences
- Define Integrated Primary Care (IPC) and Behavioral Health Integration (BHI)
- Recognize role of Primary Care in health care transformation
- Recognize current efforts at health care transformation
- Distinguish among major models of Integrated Primary Care

What is required in this part of the course

- You should read through each module and watch all the videos
- There are multiple quiz questions embedded in the modules; these must be completely answered.
- You must also write a brief reflection about Integrated Primary Care and share that or

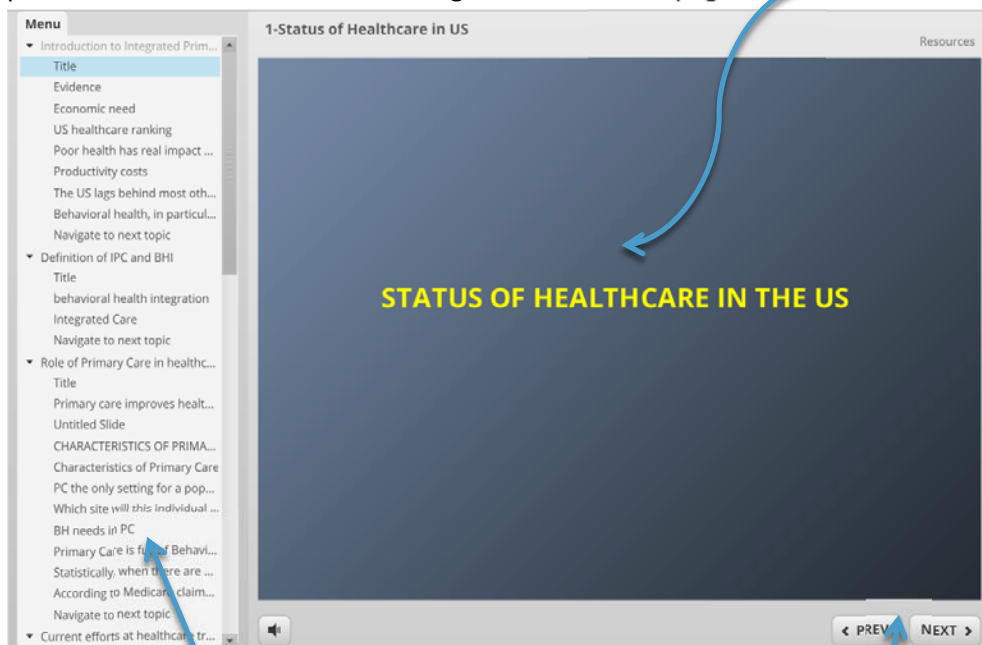
Approximate time to complete

About 1 hour

Each module will begin with information about Learning Objectives, requirements, faculty, etc. Once you have read through this, continue clicking on the titles below to access the learning module.

Introduction to Integrated Primary Care--Learning Module

When you click on the titles marked “Learning Module” a new screen will launch and you can begin the presentation. The modules are arranged as “slides” or “pages”



Some are slides you need to read, others contain video clips you need to watch. The required quiz questions are usually at the end of each module. To navigate, use the buttons at the bottom, or you can navigate through the slides by clicking the menu on the left.

If you get stuck, email us! cipc@umassmed.edu

Downloading Readings and Handouts

A variety of readings, handouts, recommendations for online resources are provided for the course.

Downloadable links to complete slide sets and the extra resources are posted with each module.

Articles for Additional Reading

Blount, A. (January 01, 2003). Integrated Primary Care: Organizing the Evidence. *Families, Systems, & Health*, 21, 2, 121-133. [Organizing the Evidence.pdf](#)

Blount, A. Harvard Medicine Magazine: *Second Opinion: Examining the Role of Primary Care*. Winter 2013 [Examining the Role of Primary Care.pdf](#)

Blount, A., Schoenbaum, M., Kathol, R., Rollman, B. L., Thomas, M., O'Donohue, W., & Peek, C. J. (January 01, 2007). The economics of behavioral health ser medical settings: A summary of the evidence. *Professional Psychology: Research and Practice*, 38, 3, 290-297. [Blount Economics of IPC.pdf](#)

Lewis, V. A., Colla, C. H., Tierney, K., van, C. A. D., Fisher, E. S., Meara, E., & Meara, E. (January 01, 2014). Few ACOs pursue innovative models that integrat for mental illness and substance abuse with primary care. *Health Affairs*, 33, 10, 1808-1816. [Few ACOs Pursue Innovative.pdf](#)

Technology Requirements- Live Webinar Q&A Sessions

We encourage you to go to the Course Discussion Board and as you go through the course modules, post questions for Dr. Blount and/or the other faculty members. We will collect those questions in advance of each Q&A session and they will be the initial questions that Dr. Blount will address.

For these live Q&A webinars, we will be using a free and simple to use webinar platform called Zoom. It downloads in a few seconds and can be used on desktop computers, laptops, tablets and smart phones—it is compatible with Mac and PC, iOS and Android. There is an app for smartphones that you can download as well.

[CLICK HERE](#) for a helpful video about how to join a Zoom meeting.

If you will be joining the webinars from a computer that is behind very restrictive firewalls, you may need to download the Zoom software in advance with the help of your institutional IT department.

We will send an invitation and a link to all registered students prior to each webinar—it should be a simple click to join. There will be a dial-in number so you can ask questions during the webinar (you will be muted when you join, and will need to “raise a virtual hand” in order for us to unmute your microphone so you can speak.) or if you don’t want to dial in or if you don’t have a microphone, you will also be able to type your questions/comments into a chat space.

If this sounds confusing, you can preview what a Zoom session looks like on their website:

<https://zoom.us/> You can also email us for help: cipc@umassmed.edu

International Students

We have had numerous students around the globe taking our online courses. You shouldn’t have any difficulties viewing the course or the embedded videos, but please let us know if you do and we’ll try our best to troubleshoot the issue and get it resolved quickly. A strong broadband connection to the internet will be needed as there are many videos that will need to load and play.

For calling into live webinars, please be sure to have a good connection and that you know what charges your carrier will exact for international calls. We do provide a list of international call-in numbers that are toll-free, but there may be additional charges that apply. Be sure to check your calling plan before dialing in.

ALL WORK MUST BE
COMPLETED BY
May 2018
to receive credit for the course

Course Evaluations and the Final Survey

In order to offer continuing education credits for this course, we must receive feedback on the learning modules. There is a brief survey at the end of each module.

At the end of the course, you should fill out the mandatory final course evaluation. This is a retrospective pre/post survey built to measure our course against competencies described here:

<http://farleyhealthpolicycenter.org/wp-content/uploads/2016/02/Core-Competencies-for-Behavioral-Health-Providers-Working-in-Primary-Care.pdf>

[Benjamin F. Miller, PsyD, Emma C. Gilchrist, MPH, Kaile M. Ross, MA, Shale L. Wong, MD, MSPH, Alexander Blount, EdD, C.J. Peek, PhD. Core Competencies for Behavioral Health Providers Working in Primary Care. Prepared from the Colorado Consensus Conference. February 2016.]

Miller, Gilchrist, Ross, and Wong of the Eugene S. Farley, Jr. Health Policy Center, University of Colorado School of Medicine organized and led this project. Blount of Antioch University New England and University of Massachusetts served as consultant for behavioral health competencies and training. Peek of the University of Minnesota served as consultant to facilitate the consensus process and help synthesize the resulting content.

We will send you a link to a course evaluation at the end of the course; it is a requirement for completion.

Questions and Support

If you are having difficulty **accessing the course**, please email the Medical School help desk umwhelpdesk@umassmed.edu with a cc to Academic Computing academiccomputingservices@umassmed.edu. **Be sure to identify yourself as a UMass Worcester student, and include the name of the course(s) you are enrolled in. Expect to receive a response within 24 hours.**

For questions about **registration, payment issues and questions about course content**, go to cipc@umassmed.edu. You will receive a response during normal business hours.

If after the steps above you're still having trouble logging into the course, or for technical help with your course **outside of normal business hours**, call TOLL FREE 1-855-789-7056, or visit <http://umw.echelp.org/>. You can also get help via live text chat. **Be sure to identify yourself as a UMass Worcester student, and include the name of the course(s) you are enrolled in.**