

Risk, Needs, Responsivity in Adult Correctional Programs: Use of Tools & Referral to Tx

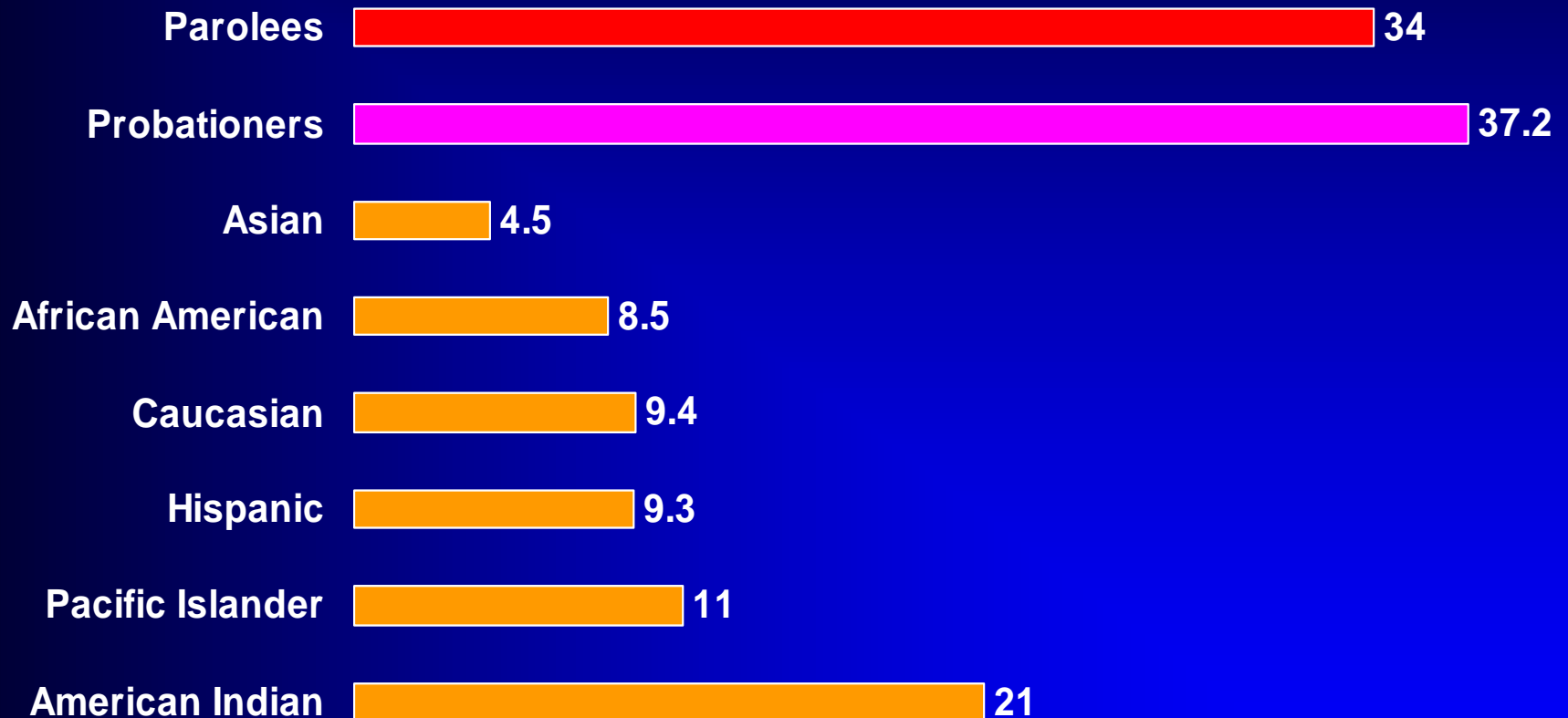
Results from the National Criminal Justice Treatment Practices Survey

Faye S. Taxman, Ph.D.
fstaxman@gmu.edu

Taxman, Cropsey, Young, & Wexler, Screening, Assessment, and Referral Practices in Correctional Setting: A National Perspective
Criminal Justice & Behavior, 2007



Justice-Involved are 4 Times More Likely to have a Substance Use Disorder than the General Population



In 2005, an estimated 22.2 million persons aged 12 or older were classified with substance dependence or abuse in the past year. *National Household Survey on Drug Use and Health, 2005.*

NCJTP Survey: Frame & Conceptual Model

Census of States (n=50)

Prison
Probation
Parole AOD

Representative Jurisdictions

All CJ Agencies (n=421)
Select Providers (n=217)
Staff (n=1085)

Correctional
Programs

Tx- Related Services

Availability Size Within CJS
SA Services Physical Health Services

Programmatic

Administrators Staff Structure Resources
Service Integration Leadership Culture
History Goal/Mission Organizational Learning

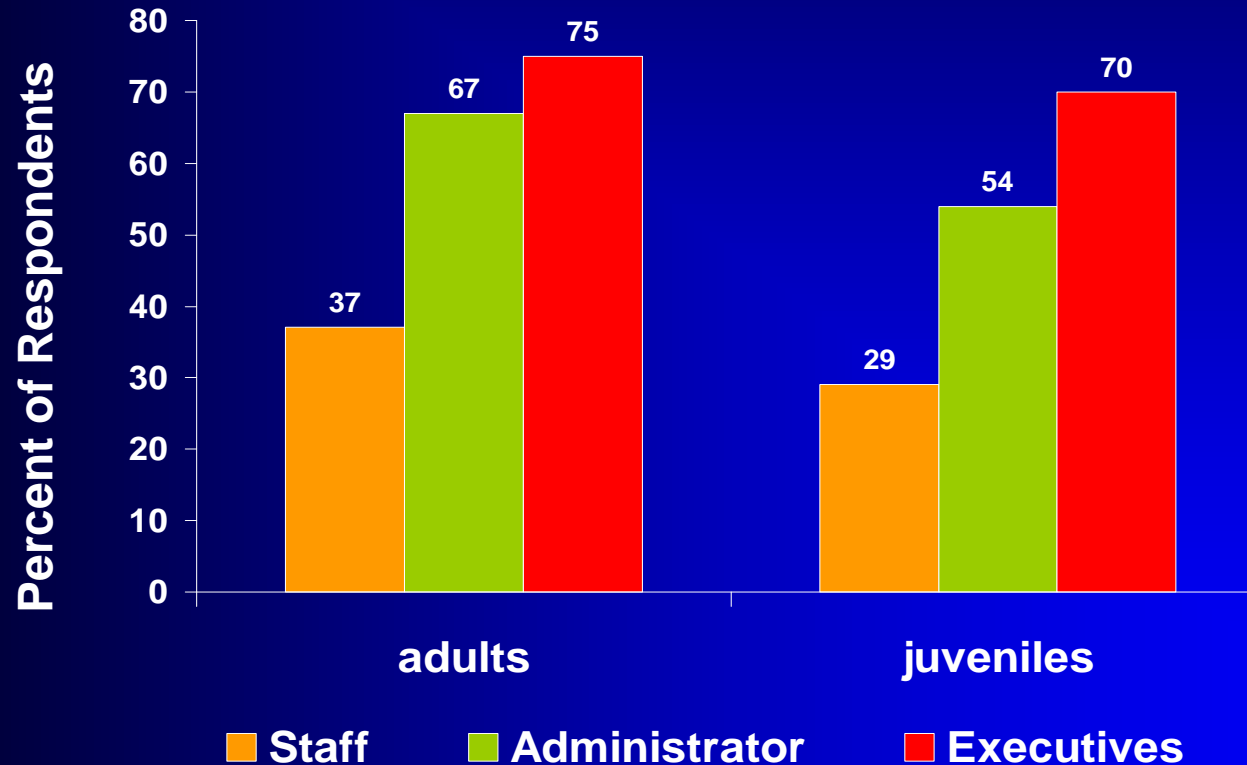
SYSTEMIC

Legal, Regulations Attitudes/Values of Community
Social and Human Capital Infrastructure Resources
Linkages/Integration Policies/Practices

Response Rates from Survey

- * Survey administered via mail

- * **Multi-level** (Head of state agency, facility administrator, staff)



- * Analyses found that there was no difference in response by geography, size of jurisdiction/facility, or type of organization

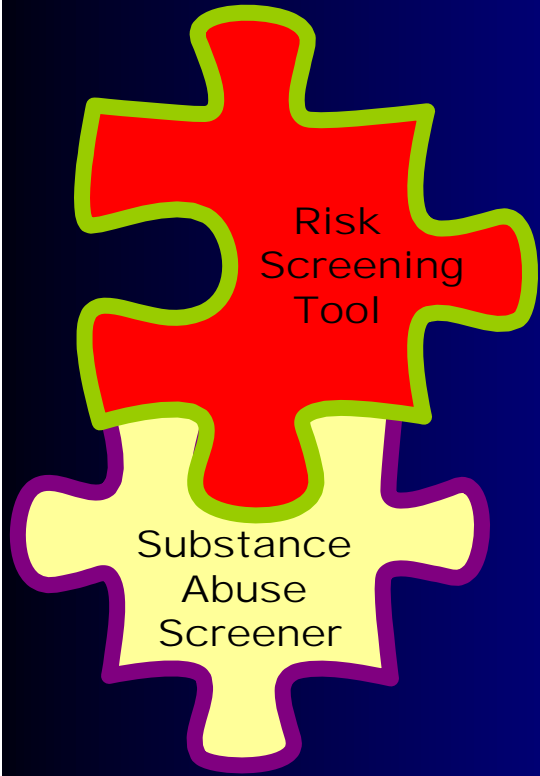
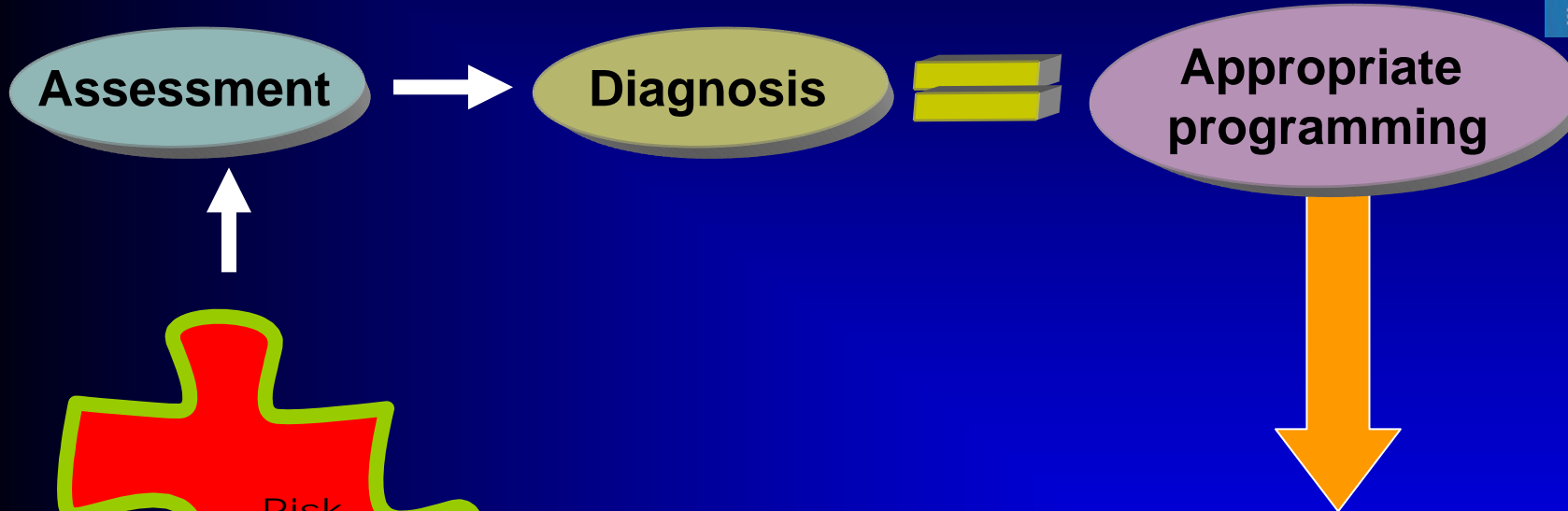
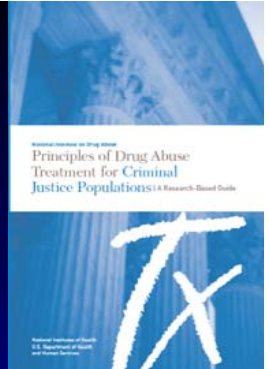
CJ Risk Assessment

- Actuarial based Models
- Tied to CJ Decisions
- Historically used as a tool to determine severity of sanction/punishment
- 5 Main Factors
 - Age of first arrest
 - Number of arrests and/or convictions
 - Number of failed attempts on probation (or parole)
 - Number of incarcerations
 - Number of escapes
 - Substance Abuse
- Main Tools:
 - Composite Score of Criminal History
 - Wisconsin Risk/Needs
 - Level of Service Inventory

SA Screening Tools

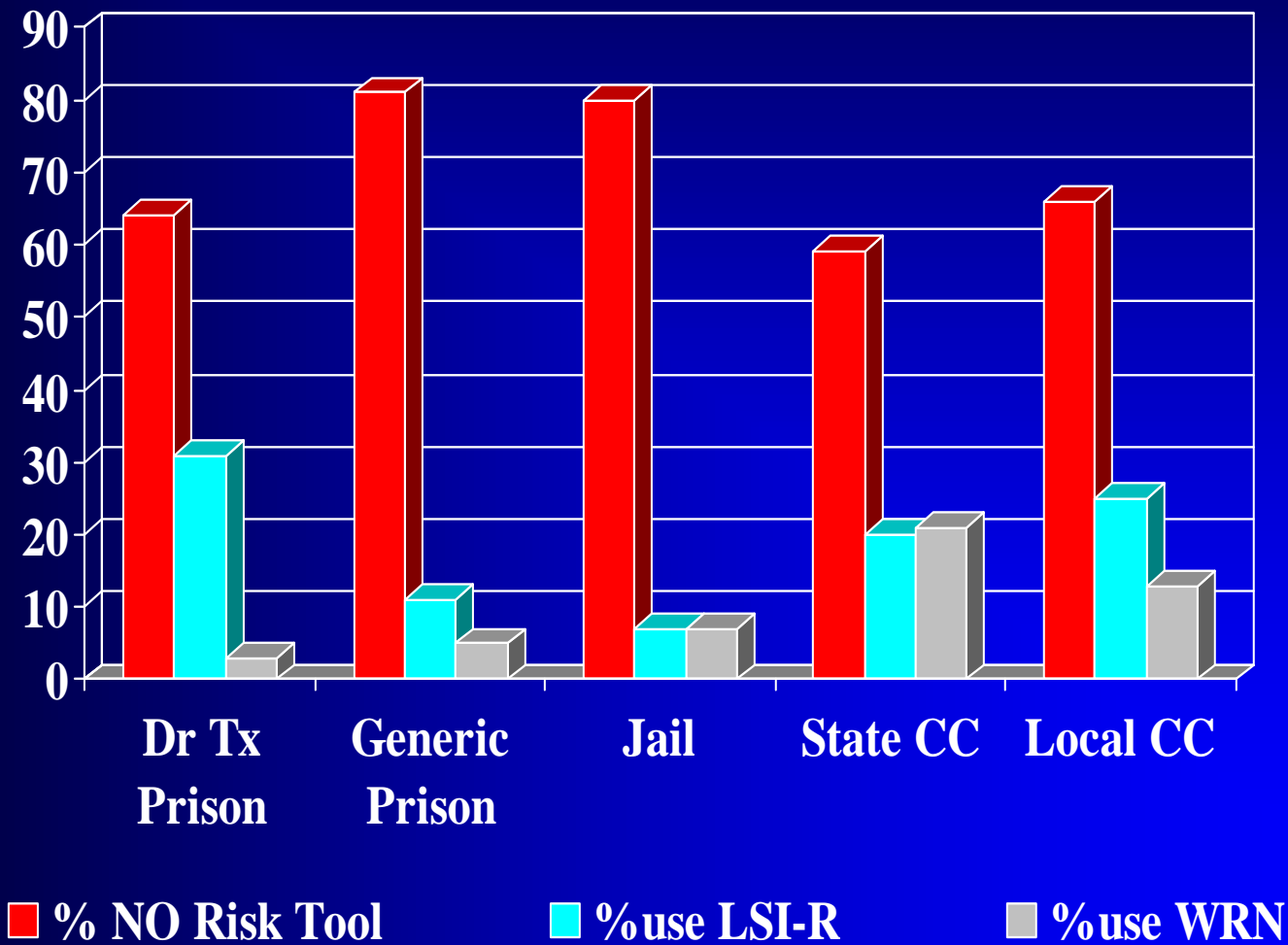
- Screen for SA Problem (Based on DSM-IV)
- Triage Method
- In CJ, used to identify which of the offenders to be referred for clinical assessment
- Many tools exist:
 - CSAT's SSI
 - ASI
 - Sassi
 - TCU Drug Use Screen

Model: Risk-Need-Responsivity Model in Using Treatment Services



SUD	High Risk	Medium Risk	Low Risk
Dependent	Residential	IOP	IOP
Abuser	IOP	Outpatient	Outpatient
None	Correctional Program	Correctional Program	Minimal

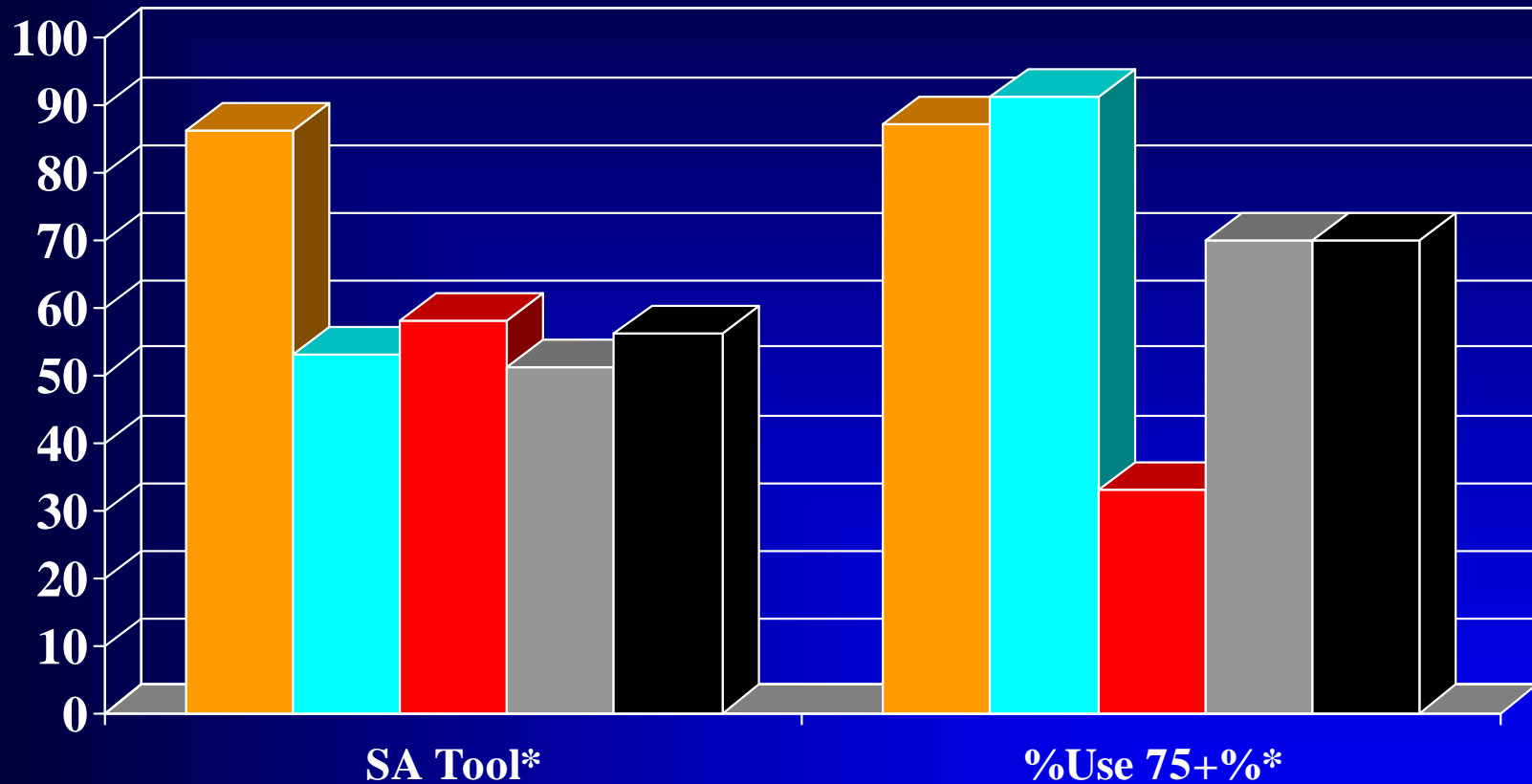
Risk Tools: Few In Place



Favored Tools

- Dr Tx Prison: ASI (55%), TCUDS-II (39%)
- Generic Prison: SASSI (39%), TCUDS-II or ASI (33%)
- Jail: ASI (58%), MAST (29%)
- State Comm Corr: SASSI (58%), ASI (47%)
- Local Comm Corr: SASSI (46%), ASI (43%)

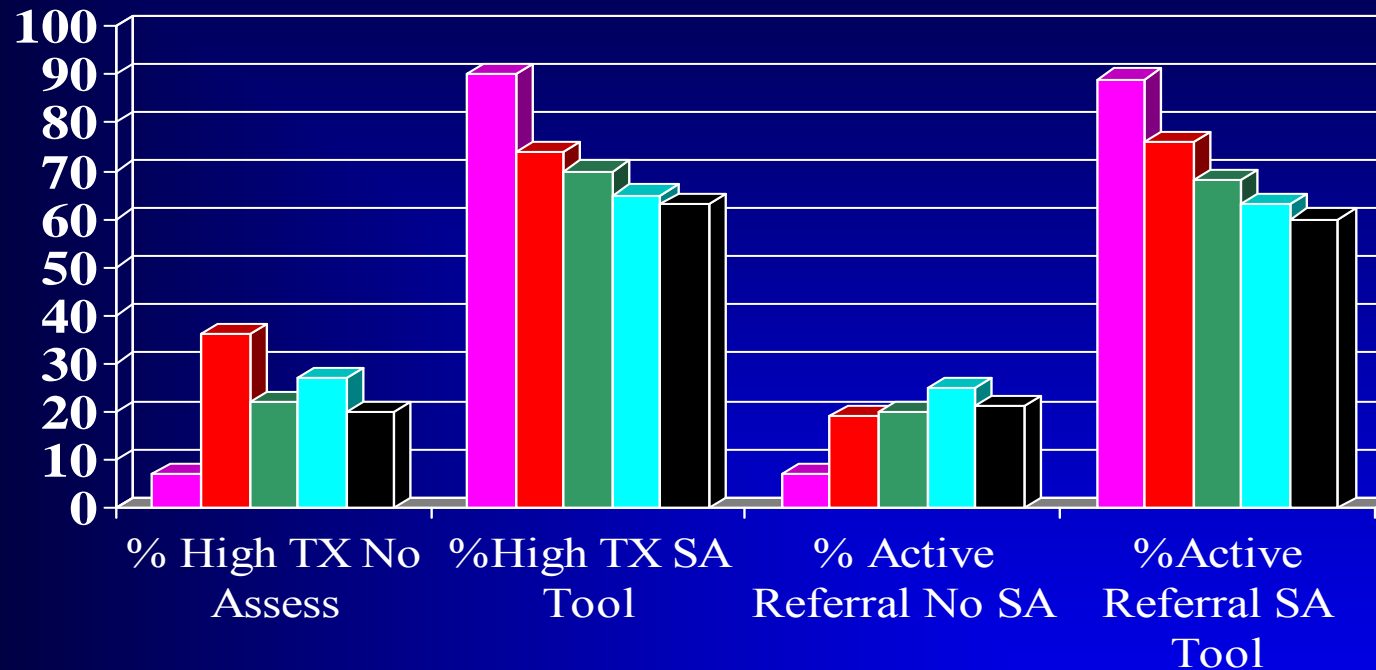
Adoption & Implementation of SA Tool



■ Dr TX Prisons ■ Generic Prison ■ Jails ■ State Comm Corr ■ Local Comm Corr

Chi-Square=17.8, $p < .01$ for Use of SA Tool by setting
Chi-Square=27.3, $p < .001$ for Implementation of SA for 75%Population

Impact of SA Tool on Tx, Referral



■ Dr TX Prison
 ■ Generic Prison
 ■ Jail
 ■ State CC
 ■ Local CC

Intensity of Treatment by Use of SA Tool--no difference in all settings except Prisons where Chi-Square=13.5, $p < .01$

Referral Services by Use of SA Tool— $p < .01$ for prisons, State CC, and Local CC

Logistic Regression: Predictors of Adoption of SA Tool & Implementation

		Use of SA Tool		Adoption—75%+Pop	
		β	Odds Ratio	β	Odds Ratio
Facility	Jails	--	--	--	--
	Prison	-0.4	0.7	1.5	4.7**
	State CC	-0.8	0.5	0.5	1.7
	Local CC	-0.6	0.5	0.9	2.4
	Drug Tx Prisons	1.9	7.3**	2.7	14.9***
Treatment Intensity	None	--	--	--	--
	Low	0.7	2.1	0.1	1.1
	High	1.5	4.4**	2.6	14.0
Referral Services	None	--	--	--	--
	Low	1.8	6.3	2.1	7.9
	High	2.3	12.0**	2.3	9.5**
Standardized Risk Tool		2.0	7.6**	0.9	2.5**
Size of Correctional Population		0	1.0	0	1.0

p<.01; *p<.001

Screening, Assessment, Tx Intensity & Referrals

* Adoption:

- Facilities are less likely to adopt Risk Tools, more likely to adopt SA Tool
- Adoption Patterns Impair Ability to Put in Place Research on Tx Matching (Sensitive to Risk & SA Needs)
- Little Selection of Offenders into Programs

* Implementation:

- Use of Tools Unrelated to Nature of Services Provided, but Facilities that Offer High Intensity TX are more Likely to Adopt SA Tools but not implement widely
- Use of Active Referral Strategies Increases Odds of Use and Implementation of SA Tools
- Presence of Risk Tool in System Increases Odds of Use & Implementation of SA Tools

* Size of Correctional Population Does Not Affect Adoption or Implementation

On-Going Research into Adoption, Implementation

Impact of State Policies/Practices

Prison
Probation
Parole AOD

Correctional Programs

Tx- Related Services

Availability Size Within CJS
SA Services Physical Health Services

Programmatic

Administrators Staff Structure Resources
Service Integration Leadership Culture
History Goal/Mission Organizational Learning

SYSTEMIC

Legal, Regulations Attitudes/Values of Community
Social and Human Capital Infrastructure Resources
Linkages/Integration Policies/Practices

Impact Socio-Legal Culture

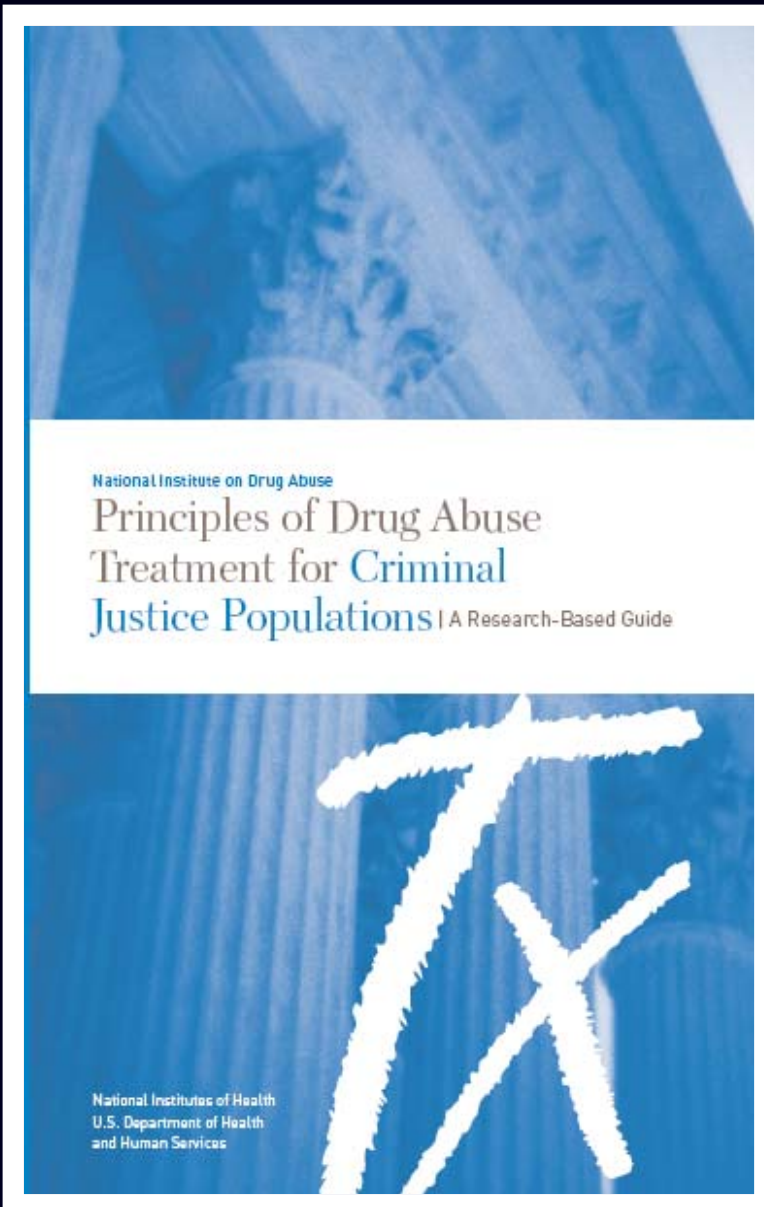
(n=72)

All CJ Agencies
Select Providers
Staff

Limitations of the Survey

- * **Cross sectional survey - does not examine historical influence of factors or casual relationships**
- * **Self-report by administrators on programs/ services and EBPs**
- * **May be subject to overreporting of programs/services due to perceived social desirability of certain answers**
- * **Familiarity with nomenclature may have affected responses to questions**

WWW.CJDATS.ORG



Journal of Substance Abuse Treatment

Special NCJTP Issue, April 2007, Volume 32(3)

- Taxman, F. S., Young, D. W., & Fletcher, B (editors). The National Criminal Justice Treatment Practices Survey: An overview of the special edition. (Pages 221-223)
- Taxman, F. S., Young, D. W., Wiersema, B., Rhodes, A., & Mitchell, S. National criminal justice treatment practices survey: Methods and procedures. (Pages 225-238)
- Taxman, F. S., Perdoni, M., & Harrison, L. D. Drug treatment services for adult offenders: The state of the state. (Pages 239-254)
- Young, D. W., Dembo, R., & Henderson, C. E. A national survey of substance abuse treatment for juvenile offenders. (Pages 255-266)
- Friedmann, P. D., Taxman, F. S., & Henderson, C. E. Evidence-based treatment practices for drug-involved adults in the criminal justice system. (Pages 267-277)
- Henderson, C. E., Young, D. W., Jainchill, N., Hawke, J., Farkas, S., & Davis, R. M. Adoption of evidence-based drug abuse treatment practices for juvenile offenders. (Pages 279-290)
- Grella, C., Greenwell, L., Prendergast, M., Farabee, D., Hall, E., Cartier, J., & Burdon, W. Organizational characteristics of community and correctional treatment providers. (Pages 291-300)
- Oser, C., Tindall, M. S., & Leukefeld, C. HIV testing in correctional agencies and community treatment programs: The impact of internal organizational structure. (Pages 301-310)