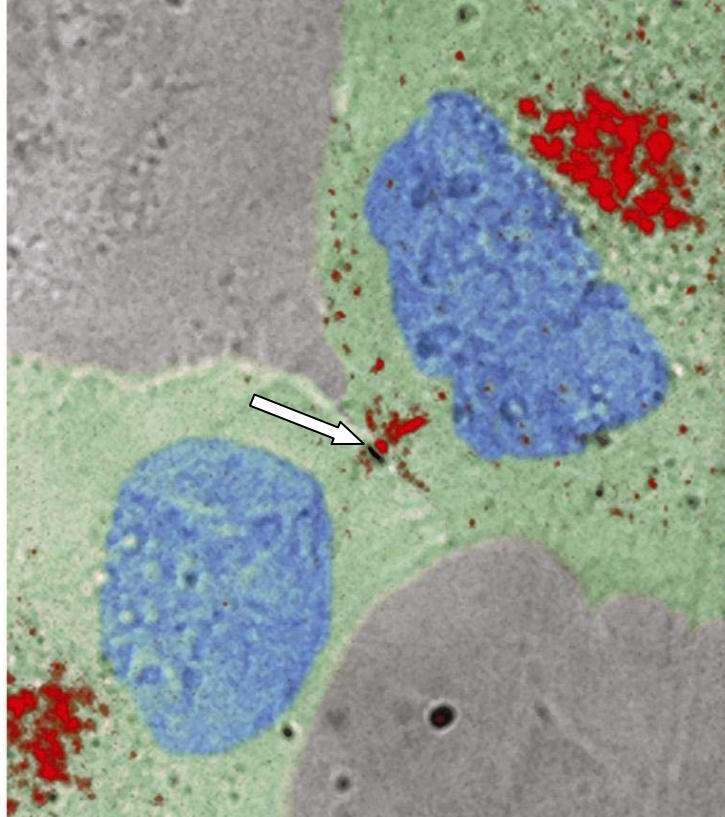


The Final Moment Before Cell Division



In this image from the Doxsey lab at UMass Medical School, two human cells are about to divide. The area in green shows the emerging daughter cells; the blue is their nuclei. The short black line, marked by the arrow, is the midbody ring discovered by Doxsey's team. To the right of the ring, marked in red, are small vesicles being sent to the midbody ring. Those vesicles will soon fuse together and burst to achieve final separation.