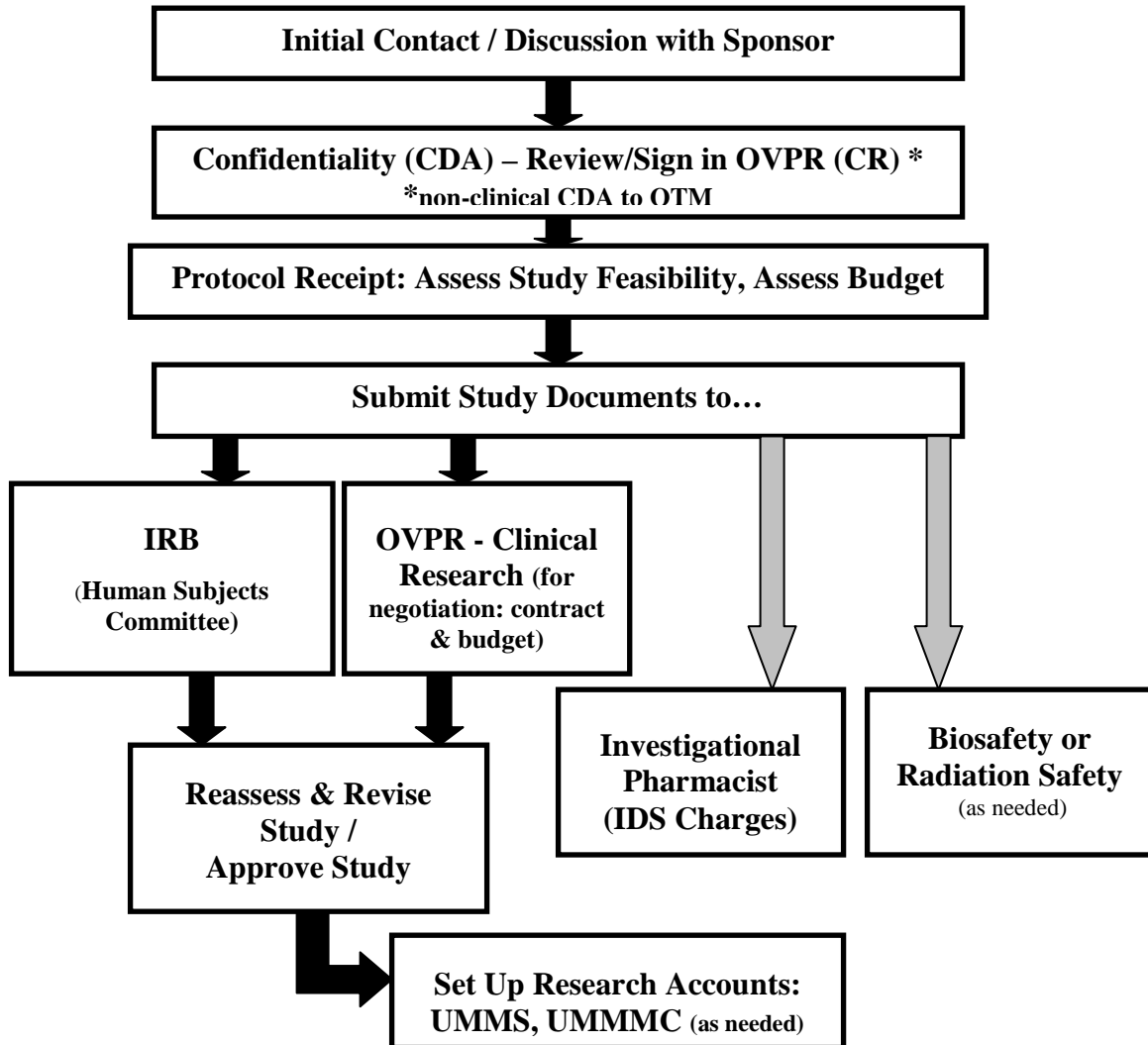




Office of Vice Provost for Research

Clinical Research Division

Flow Chart: Externally-sponsored Studies



Minimum of 3 Critical Elements BEFORE Recruitment:

1. IRB Approval
(other committees, as applicable)
2. Contract fully executed
(must include signature of UMass OVPR official, PI and Sponsor)
3. Account #s set-up
(School and UMass Memorial, as applicable)