

GENITOURINARY ONCOLOGY RESEARCH RETREAT

University of Massachusetts Medical School

Genitourinary Oncology Research Retreat Committee

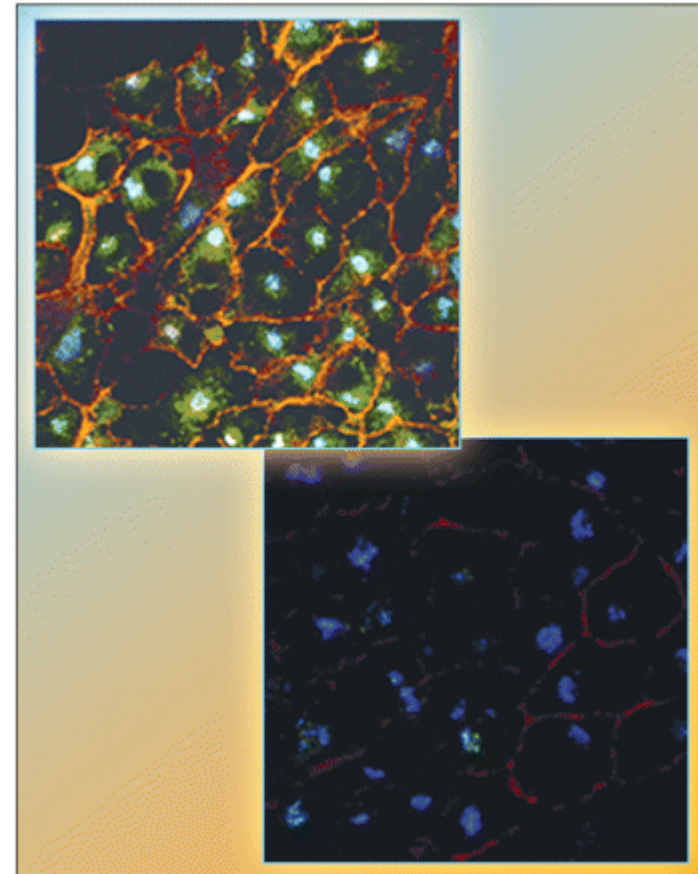
Dario C. Altieri, M.D., Professor and Chair of Cancer Biology
K.C. Balaji, M.D., Professor and Chief, Division of Urology,
T.J. Fitzgerald, M.D., Professor and Chair of Radiation Oncology
Lucia R. Languino, Ph.D., Professor of Cancer Biology,
Cell Biology and Radiation Oncology
Jane Lian, Ph.D., Professor of Cell Biology
Gary Stein, Ph.D., Professor and Chair of Cell Biology

Retreat Coordinator: Diane Barbieri, Division of Urology
For inquiries call (508) 856-5276 or e-mail barbierd@ummhc.org

Sponsored by: UMass Memorial Cancer Center

Directions to: Hoagland-Pincus Conference Center
222 Maple Avenue, Shrewsbury, MA

Take Route 9 East over Lake Quinsigamond. At third set of traffic lights after the bridge, bear left onto Maple Avenue (intersection marked by Fairlawn Shopping Center, Chili's Restaurant). Follow Maple Avenue up the hill. At the top of the hill turn left at the maroon sign for UMMS Worcester Foundation Campus. The H-P Conference Center is the first building on the right. Parking is available on the left past the Conference Center Building.



Date: Tuesday, November 18, 2008
Time: 7:00 a.m.-2:00 p.m.

Venue: Hoaglund-Pincus Conference Center
222 Maple Avenue
Shrewsbury, MA 01545

*** Free Breakfast and Lunch ***

7:00am *Breakfast*****

8:00am: Welcome and Introduction

K.C. Balaji, M.D., Professor and Chief, Division of Urology

8:15am-8:30am: “Commonwealth Medicine/Center for Health Policy and Research: Opportunities for Collaboration”

Judith Steinberg, M.D., MPH, Senior Director of Clinical Affairs,
Commonwealth Medicine Center for Health Policy and Research

8:30am-8:35am Discussion

Session 1: Mouse Models of Prostate Cancer

**Co-Moderator: Jane Lian, Ph.D. Professor, Department of Cell
Biology**

**Co-Moderator: T.J. Fitzgerald, M.D., Professor and Chair,
Department of Radiation Oncology**

8:35am-8:50am: “Role of JNK in Prostate Cancer”

Anette Huebner, Ph.D., Postdoctoral Associate, Department of Molecular
Medicine

8:50am-8:55am Discussion

8:55am-9:10am: “Beta1 Integrins in Tumor Progression and Resistance to
Radiation: a Novel JNK-Mediated Pathway”

Hira Goel Ph.D., Research Assistant Professor, Departments of Cancer
Biology and Radiation Oncology

9:10am-9:15am Discussion

9:15am-9:30am: “Runx2 Driven Bone Metastatic Phenotypes in Prostate
Cancer”

Jitesh Pratap, Ph.D, Research Assistant Professor, Department of Cell
Biology and Jacqueline Akech, Ph.D. Postdoctoral Fellow, Department of
Cell Biology

9:30am-9:35am Discussion

Session 2: Translational Approaches in Prostate Cancer Research

**Moderator: Dario C. Altieri, M.D., Professor and Chair, Department
of Cancer Biology**

9:35 am-9:50am: “The Role of Nutrition in Prostate Cancer”

James Carmody, PhD, Assistant Professor, Department of Medicine,
Preventative Medicine/Behavioral Health

9:55 am-10:00am Discussion

10:00am-10:15am: “Annotation and Validation of Prostate Cancer Tissue
Samples for Research”

Satya Allaparthi, M.D. Fellow, Division of Urology

10:15am-10:20am Discussion

10:20am-10:35am: “AMACR (P504S) is a Good Prostate Cancer Marker”

Zhong Jiang, M.D., Professor, Department of Pathology

10:35am-10:40am Discussion

10:40am-10:55am: *BREAK*****

Session 3: Signaling in Prostate Cancer

**Co-Moderator: Lucia R. Languino, Ph.D. Professor, Departments of
Cancer Biology, Cell Biology and Radiation Oncology**

**Co-Moderator: K.C. Balaji, M.D., Professor and Chief, Division of
Urology**

10:55am-11:10am: “Protein Kinase D1 (PKD1) is a Metastasis Suppressor”

Cheng Du, Ph.D., Research Assistant Professor, Division of Urology

11:10am-11:15am Discussion

11:15am-11:30am: “AlphaVBeta6 Integrin Regulates Androgen Receptor Activity in
vitro and Promotes Prostate Tumor Growth in vivo”

Tao Wang, Ph.D., Research Assistant Professor, Department of Radiation Oncology

11:30am-11:35am Discussion

11:35am-11:50am: “Combinatorial Drug Design Targeting a Compartmentalized Hsp90
Cancer Network”

Byoung Heon Kang, Ph.D., Instructor, Department of Cancer Biology

11:50am-11:55am Discussion

Session 4: Advances in Clinical and Basic Urologic Oncology Research

Moderator: Gary Stein, Ph.D., Professor and Chair, Department of Cell Biology

11:55am-12:10pm: “Molecular Insight of Bladder Cancer”

Shakeeb Yunus, M.D., Assistant Professor, Division of Hematology Oncology

12:10pm-12:15pm Discussion

12:15pm-12:30pm: “Clinical Trials of Molecularly Targeted Agents in Renal Cell
Carcinoma”

William Walsh, M.D., Assistant Professor, Division of Hematology Oncology

12:30pm-12:35pm Discussion

12:35pm-2:00pm *Lunch and Poster Discussion*****