

# Administration and Faculty

## University of Massachusetts Board of Trustees

**Robert J. Manning** of Swampscott, Chair  
**Anthony B. Beatrice** of Lowell, Student Trustee  
**Lawrence F. Boyle** of Milton  
**Jennifer C. Bracer** of Concord  
**Matthew E. Carlin** of Sudbury  
**Edward W. Collins Jr.** of Springfield  
**John A. DiBiaggio** of Snowmass Village, CO  
**Tamara Endich** of Dartmouth, Student Trustee  
**Ruben J. King-Shaw Jr.** of Carlisle  
**Aleksandar Kulenovic** of Boston, Student Trustee  
**Richard J. Lawton** of North Easton  
**Philip W. Johnston** of Marshfield  
**James J. Karam** of Tiverton, RI  
**Kenneth A. MacAfee II** of Needham  
**Bharath D. Nath** of Worcester, Student Trustee  
**William T. O'Shea** of Basking Ridge, NJ  
**Kerri Osterhaus-Houle, MD** of Hudson  
**Janet D. Pearl, MD** of Wellesley  
**Aida Rego** of Attleboro  
**Henry M. Thomas III** of Springfield  
**Ruth Thompson** of Amherst, Student Trustee  
**Stephen P. Tocco** of Reading

## University Administration

**Jack M. Wilson, PhD** (Kent State University), President  
**James R. Julian Jr.** (New England School of Law), Executive Vice President  
**Michael F. Collins, MD** (Tufts University), Senior Vice President for the Health Sciences  
**Marcellette G. Williams, PhD** (Michigan State), Senior Vice President for Academic and Student Affairs and International Relations  
**Thomas J. Chmura, MS** (Rensselaer Polytechnic Institute), Vice President for Economic Development  
**David J. Gray, MPA** (Pennsylvania State University), Vice President for Information Services and Chief Information Officer

**Stephen W. Lenhardt Sr.** (University of Pittsburgh), Vice President for Management and Fiscal Affairs and Treasurer

**Lawrence T. Bench, JD** (Boston College), Interim General Counsel

## UMass Medical School Campus Administration

**Michael F. Collins, MD** (Tufts University), Chancellor, ad interim

**Terence R. Flotte, MD** (Louisiana State), Executive Deputy Chancellor and Provost

**Thomas D. Manning, MA** (Assumption College), Deputy Chancellor for Commonwealth Medicine and Strategic Facilities Planning

**Robert E. Jenal, BS** (University of Massachusetts Amherst), Vice Chancellor for Administration and Finance

**Charles J. Pagnam, BA** (Nichols College), Vice Chancellor for Development

**Arthur M. Pappas, MD** (University of Rochester), Vice Chancellor for Clinical Affairs

**Albert Sherman, BS** (Massachusetts College of Pharmacy and Allied Health Sciences), Vice Chancellor for University Relations

**John Baker, MA** (Purdue University), Associate Vice Chancellor for Facilities Management

**Joanne Derr, MS** (Boston University), Associate Vice Chancellor for Human Resources

**Timothy Fitzpatrick, BS** (Worcester Polytechnic Institute), Associate Vice Chancellor for Master Space Planning

**Kathleen Q. Powers, MBA** (Boston University), Associate Vice Chancellor for Administration and Chief of Staff

**Mark L. Shelton, MFA** (University of Pittsburgh), Associate Vice Chancellor for University Relations

**Ronald J. Steingard, MD** (Pennsylvania State University), Associate Vice Chancellor and Chief Medical Officer, Commonwealth Medicine

**Jean C. Sullivan, JD** (Boston University), Associate Vice Chancellor, Commonwealth Medicine

**Nancy Vasil, BS** (Bentley College), Associate Vice Chancellor for Financial Services

**Marian V. Wilson, PhD** (Pennsylvania State University), Associate Vice Chancellor for Diversity and Equal Opportunity

**Paulette Goeden, MBA** (Florida International University), Assistant Vice Chancellor for Administration

**Deborah Harmon Hines, PhD** (University of Tennessee), Vice Provost for School Services

**Judith K. Ockene, PhD** (Boston College), Vice Provost for Faculty Affairs, ad interim

**John L. Sullivan, MD** (State University of New York at Upstate), Vice Provost for Research

**Walter H. Ettinger Jr., MD, MBA** (Johns Hopkins University; Wake Forest University), Associate Vice Provost for Clinical and Population Health Research

**Thoru Pederson, PhD** (Syracuse University), Associate Vice Provost for Research

**Gary B. Schneider, PhD** (University of Massachusetts Amherst), Associate Vice Provost for Research

**Donna Ambrosino, MD** (Harvard University), Executive Director, Massachusetts Biologic Laboratories

**Elaine R. Martin, DA** (Simmons College), Director, Library Services

**James P. McNamara, PhD** (University of Connecticut), Executive Director, Technology Management

**Robert B. Peterson, BBA** (University of Detroit), Chief Information Officer

## Graduate School of Biomedical Sciences Administration

**Anthony Carruthers, PhD** (University of London), Dean

**Kendall L. Knight, PhD** (University of California Riverside), Associate Dean

**Carole C. Upshur, EdD** (Harvard University), Associate Dean, Clinical & Population Health Research

## Graduate Council

As of April 2008

**Anthony Carruthers, PhD**, Dean, GSBS

**Kendall Knight, PhD**, Associate Dean, GSBS

**Richard E. Baker, PhD**, Molecular Genetics & Microbiology

**Sharon B. Cantor, PhD**, Cancer Biology

**Kshama Chandrasekhar**, GSBC

**Jessica Rocheleau**, GSBC

**Michael Cole**, GSBS

**Colleen Corey**, GSBS

**Rose Daniels**, GSBS

**Marc R. Freeman, PhD**, Chair, Neuroscience

**Anthony N. Imbalzano, PhD**, Cell Biology

**Anne Michelson**, GSBS

**Craig L. Peterson, PhD**, Interdisciplinary Graduate Program

**Alonzo H. Ross, PhD**, Biochemistry & Molecular Pharmacology

**Michael J. Sanderson, PhD**, Cellular & Molecular Physiology

**Neal Silverman, PhD, MD/PhD** Program

**Lawrence Stern, PhD**, Immunology & Virology

**Carole Upshur, EdD**, Clinical & Population Health Research

## Graduate Student Body Committee

As of May 2008

President: **Can Kayatekin**

Vice President: **John Follit**

Secretary: **Alison Bright**

## Graduate School of Biomedical Sciences Faculty

As of May 1, 2008

Information provided by the Office of Faculty Affairs

**Usha Acharya**, assistant professor of molecular medicine; BS, University of Madras, 1985; MS, 1987; PhD, Indian Institute of Science Bangalore, 1992

**Schahram Akbarian**, associate professor of psychiatry; MD, Freie Universität Berlin, 1989; PhD, 1991

**Brian J. Akerley**, assistant professor of molecular genetics & microbiology; BS, Bates College, 1988; PhD, University of California Los Angeles, 1998

**Mitchell S. Albert**, professor of radiology; PhD, New York University, 1993

**Mark Alkema**, assistant professor of neurobiology; BS, University of Amsterdam, 1985; MS, 1990; PhD, 1996

**Dario C. Altieri**, the Eleanor Eustis Farrington Chair in Cancer Research and chair and professor of cancer biology; MD, University of Milan, 1981

**Victor R. Ambros**, professor of molecular medicine; SB, Massachusetts Institute of Technology, 1975; PhD, 1979

**Frederick A. Anderson Jr.**, research professor of surgery and medicine; BA, Tufts, 1971; BS, 1971; MS, Worcester Polytechnic Institute, 1975; PhD, 1984

**Athena Andreadis**, associate professor of cell biology; BA, Harvard, 1977; PhD, Massachusetts Institute of Technology, 1984

**Elliot J. Androphy**, the Barbara and Nathan Greenberg Chair in Biomedical Research and professor of medicine and molecular genetics & microbiology; BA, Brandeis, 1975; MD, Rochester, 1979

**Neil Aronin**, professor of medicine, cell biology and physiology; BA, Duke, 1970; MD, Pennsylvania, 1974

**Ingolf M. Bach**, associate professor of molecular medicine; PhD, University of Paris VII, 1993

**Eric H. Baehrecke**, associate professor of cancer biology; BS, UMass Amherst, 1986; MS, Texas A & M, 1988; PhD, Wisconsin, 1992

**Richard E. Baker**, associate professor of molecular genetics & microbiology; BS, College of William and Mary, 1975; PhD, Pennsylvania State, 1980

**Stephen P. Baker**, instructor in cell biology; BS, Worcester State College, 1976; MS, UMass Amherst, 1983

**Zheng-Zheng Bao**, associate professor of medicine and cell biology; BS, Fudan University, 1986; PhD, Illinois, 1993

**Graham F. Barnard**, associate professor of medicine and biochemistry & molecular pharmacology; BSC, Southampton University, 1972; PhD, 1975; MD, Stanford, 1985

**Leslie J. Berg**, professor of pathology; BA, Harvard, 1980; PhD, University of California Berkeley, 1986

**Balaji Bhyravbhata**, assistant professor of biochemistry & molecular pharmacology; BSC, Delhi University, 1986; MSC, 1988; MS, UMass Boston, 1990; PhD, Brandeis, 1997

**Osman S. Bilsel**, research assistant professor of biochemistry & molecular pharmacology; BA, Rochester, 1986; PhD, Washington University, 1991

**Neil R. Blacklow**, professor of medicine and molecular genetics & microbiology; BA, Harvard, 1959; MD, Columbia Physicians & Surgeons, 1963

**Alexei A. Bogdanov**, professor of radiology; PhD, Moscow State University, 1989



**Daniel N. Bolon**, assistant professor of biochemistry & molecular pharmacology; BS, Duke, 1997; PhD, California Institute of Technology, 2002

**Rita B. Bortell**, associate professor of medicine; BS, Florida, 1975; MS, 1981; PhD, 1987

**Irene Bosch**, assistant professor of medicine; BS, University Central de Venezuela, 1985; PhD, Harvard, 1994

**Victor L. Boyartchuk**, assistant professor of molecular genetics & microbiology; MS, Kiev Medical University, 1989; PhD, University of California Berkeley, 1989

**Becky A. Briesacher**, assistant professor of medicine; BA, University of California Berkeley, 1988; MA, Williams College, 1988; PhD, Maryland, 2001

**Michael H. Brodsky**, assistant professor of molecular medicine; BA, University of California Berkeley, 1987; PhD, Massachusetts Institute of Technology, 1996

**Vivian Budnik**, professor of neurobiology; BS, University of Chile, 1983; PhD, Brandeis, 1988

**Sumner H. Burstein**, professor emeritus of biochemistry & molecular pharmacology; BS, Massachusetts Institute of Technology, 1953; MS, Brandeis, 1955; PhD, Wayne State, 1959

**Sharon B. Cantor**, assistant professor of cancer biology; BS, Michigan, 1990; PhD, Tufts, 1997

**Robert E. Carraway**, professor of physiology; BS, State University of New York Stony Brook, 1967; PhD, Brandeis, 1972

**Walter A. Carrington**, associate professor of physiology; BS, Massachusetts Institute of Technology, 1964; MA, Washington University School of Medicine, 1967; PhD, 1982

**Anthony Carruthers**, dean of the Graduate School of Biomedical Sciences and professor of biochemistry & molecular pharmacology and physiology; BSC, University of Manchester, 1977; PhD, University of London, 1980

**Lucio H. Castilla**, assistant professor of molecular medicine and biochemistry & molecular pharmacology; MS, University of Buenos Aires, 1988; PhD, Michigan, 1995

**Francis K. Chan**, assistant professor of pathology; BA, University of California San Diego, 1991; PhD, 1996;

**Sarah H. Cheeseman**, professor of medicine, molecular genetics & microbiology and pediatrics; AB, Mt. Holyoke College, 1969; MD, Wisconsin, 1973

**Jason J. Chen**, associate professor of medicine; BS, Shandong University, 1982; MA, Columbia, 1985; MPhil, 1988; PhD, 1991

**Paul R. Clapham**, associate professor of molecular medicine and molecular genetics & microbiology; BSC, University of London, 1974; MSC, Reading University, 1978; PhD, University of London, 1990

**Robin E. Clark**, associate professor of family medicine & community health; BA, Appalachian State University, 1974; MA, Connecticut, 1979; PhD, Brandeis, 1991

**Marjorie A. Clay**, professor of medicine and family medicine & community health; BA, Oklahoma, 1969; MA, Northwestern, 1971; PhD, State University of New York Buffalo, 1981

**David M. Clive**, professor of medicine; BA, New York University, 1970; MD, Case Western Reserve, 1976

**Patrick J. Connolly**, clinical professor of orthopedics & physical rehabilitation; BA, Montclair State University, 1977; MD, Northwestern, 1984

**Silvia Corvera**, professor of molecular medicine and cell biology; BS, Colegio Madrid, 1975; MD, National University of Mexico, 1981

**Mary E. Costanza**, professor emerita of medicine; AB, Radcliffe College, 1958; MA, University of California Berkeley, 1962; MD, University of Rochester, 1968

**Roger W. Craig**, professor of cell biology; BSC, Sydney University, 1970; PhD, University of London, 1975

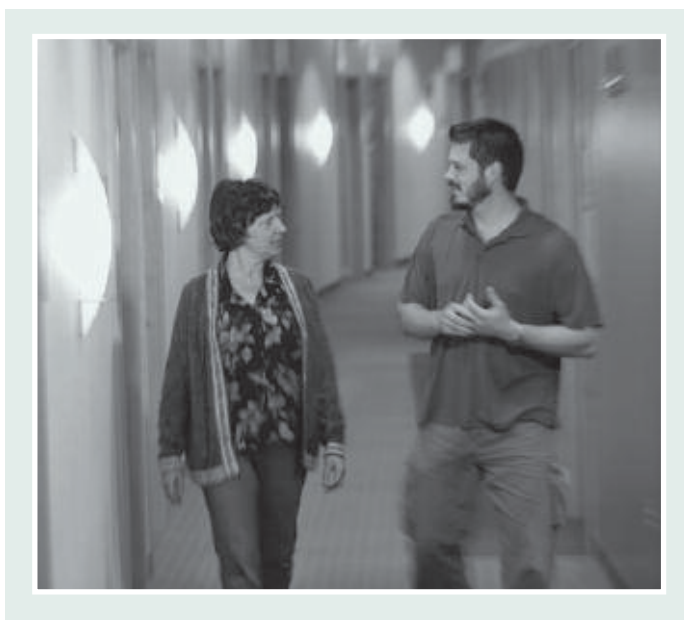
**James Crandall**, research associate professor of physiology; BS, Illinois, 1975; PhD, Florida, 1980

**Sybil L. Crawford**, associate professor of medicine; BS, Carnegie Mellon, 1983; MS, 1985; PhD, 1988

**Bruce S. Cutler**, professor of surgery; BA, Princeton, 1962; MD, Harvard 1966

**Michael P. Czech**, chair and professor of molecular medicine and molecular genetics & microbiology; BA, Brown, 1967; MA, Duke, 1969; PhD, Brown, 1972

- Roger J. Davis**, the H. Arthur Smith Chair in Cancer Research; Howard Hughes Medical Institute Investigator; and professor of molecular medicine and biochemistry & molecular pharmacology; BA, Queen's College (England), 1979; MPhil, 1980; MA, 1983; PhD, 1983
- Job Dekker**, assistant professor of biochemistry & molecular pharmacology; BS, Utrecht University, 1993; PhD, 1997
- Ronald C. Desrosiers**, adjunct professor of molecular genetics & microbiology; BA, Boston, 1970; MS, Harvard, 1991; PhD, Michigan State, 1975
- Joseph R. DiFranza**, professor of family medicine & community health; BS, UMass Amherst, 1976; MD, UMass Worcester, 1981
- Paul R. Dobner**, associate professor of molecular genetics & microbiology; BA, State University of New York Buffalo, 1975; MA, Columbia, 1976; MPhil, 1979; PhD, 1981
- James G. Dobson**, interim chair and professor of physiology; BS, Central Connecticut State College, 1965; MA, Wesleyan, 1967; PhD, Virginia, 1971
- Stephen J. Doxsey**, professor of molecular medicine, biochemistry & molecular pharmacology and cell biology; BSC, Connecticut, 1977; PhD, Yale, 1987
- William V. Dube**, associate professor of psychiatry; BM, Boston Conservatory of Music, 1972; MA, Northeastern, 1985; PhD, 1987
- Elizabeth Dugan**, assistant professor of medicine; BA, Central Florida, 1988; MA, South Florida, 1991; PhD, North Carolina, 1996
- Raymond M. Dunn**, professor of surgery and cell biology; BS, Worcester Polytechnic Institute, 1978; MD, Albany Medical College, 1982
- Richard T. Ellison**, professor of medicine and molecular genetics & microbiology; BA, Virginia, 1973; MD, Hahnemann Medical College, 1977
- Charles H. Emerson**, professor emeritus of medicine; BS, Randolph Macon College, 1963; MD, Virginia, 1967
- Patrick Emery**, assistant professor of neurobiology; PhD, University of Geneva, 1996
- Francis A. Ennis**, professor of medicine and molecular genetics & microbiology; AB, Boston College, 1960; MD, Tufts, 1964
- Michael F. Ethier**, assistant professor of medicine; BS, Worcester State College, 1971; MS, 1978; PhD, Worcester Polytechnic Institute, 1996
- James Evans**, research associate professor of biochemistry & molecular pharmacology; BS, Ohio State, 1969; MS, Northeastern, 1979
- Paul Fanning**, research assistant professor of surgery, cell biology and orthopedics & physical rehabilitation; BS, Merrimack College, 1986; PhD, Harvard, 1999
- Richard A. Fenton**, associate professor of physiology; BS, Wyoming, 1967; MS, Indiana, 1970; PhD, Kansas, 1977
- Terry S. Field**, associate professor of medicine; BA, Tufts, 1967; MS, Instructional Systems Technology, 1971; MPH, Boston, 1988; DSC, 1993
- Robert W. Finberg**, the Richard M. Haidack Professor of Medicine and chair and professor of medicine and professor of molecular genetics & microbiology; AB, University of Chicago, 1971; MA, Harvard, 1996; MD, Albert Einstein College of Medicine, 1974
- Andrew H. Fischer**, professor of pathology and cell biology; BS, Cornell, 1979; MD, Brown, 1984
- Daniel Z. Fisher**, associate professor of medicine and cell biology; BA, Swarthmore College, 1982; PhD, Rockefeller, 1987; MD, Cornell, 1988
- William H. Fisher**, professor of psychiatry; AB, Clark, 1969; MA, Northeastern, 1975; MEd, 1976; PhD, 1980
- Katherine A. Fitzgerald**, associate professor of medicine; BSc, University College Cork, 1995; PhD, Trinity College, 1999
- Jean-Pierre Flatt**, professor emeritus of biochemistry & molecular pharmacology; BS, Gymnase Cantonal Lausanne, 1952; PhD, University Lausanne, 1959
- Harvey M. Florman**, professor of cell biology and physiology; BA, Rutgers, 1972; PhD, Pennsylvania, 1982
- Terence R. Flotte**, dean of the School of Medicine and professor of pediatrics and molecular genetics & microbiology; BS, New Orleans, 1982; MD, Louisiana State, 1986
- Michael M. Francis**, assistant professor of neurobiology; BA, Virginia, 1992; PhD, Florida, 1998
- Patricia D. Franklin**, the Joy McCann Professor and associate professor of orthopedics & physical rehabilitation and family medicine & community health; MD, 1983; MBA, Rochester, 1986; MPH, 1989
- Marc R. Freeman**, assistant professor of neurobiology; BS, Eastern Connecticut State, 1993; PhD, Yale, 1999
- Mark I. Furman**, professor of medicine, cell biology and pediatrics; BA, Emory, 1983; MD, 1987
- Susan B. Gagliardi**, professor of cell biology and neurology; BA, Radcliffe College, 1965; PhD, Harvard, 1971
- Marzena Galdzicka**, instructor of pediatrics; BS, Institute of Chemistry and Food, 1979; MS, George Mason, 1998; PhD, 2002
- Guangping Gao**, professor of molecular genetics & microbiology; BM, West China University of Medicine, 1982; MS, Florida International, 1990; PhD, 1994
- Paul D. Gardner**, associate professor of psychiatry; BS, University of California San Diego, 1979; PhD, Pittsburgh, 1984
- Glenn R. Gaudette**, research assistant professor of surgery; BS, UMass Dartmouth, 1989; MS, Georgia Institute of Technology, 1992; PhD, State University of New York Stony Brook, 2002
- Ricardo T. Gazzinelli**, professor of medicine; DVM, Federal University of Minas Gerais, 1985; DSC, 1989
- Rachel M. Gerstein**, associate professor of molecular genetics & microbiology; BA, Smith College, 1984; PhD, Brandeis, 1990
- James R. Gilmore**, professor of biochemistry & molecular pharmacology; BS, New Mexico, 1973; MS, Illinois, 1976; PhD, 1980
- Edward I. Ginns**, professor of pediatrics, neurology, pathology and psychiatry; BS, Rensselaer Polytechnic Institute, 1967; PhD, 1971; MD, Johns Hopkins, 1976
- Richard Glew**, professor of medicine and molecular genetics & microbiology; AB, Harvard College, 1965; MD, Johns Hopkins, 1969
- Stephen J. Glick**, research associate professor of radiology; BS, Vermont, 1982; MS, Worcester Polytechnic Institute, 1988; PhD, 1991
- Jon D. Goguen**, associate professor of molecular genetics & microbiology; BS, Fitchburg State College, 1974; MS, UMass Amherst, 1977; PhD, 1980
- Robert J. Goldberg**, professor of medicine; BS, UMass Amherst, 1972; MS, Tufts, 1973; PhD, Johns Hopkins, 1978
- Douglas T. Golenbock**, professor of medicine and molecular genetics & microbiology; BS, Michigan, 1975; MD, 1980
- H. Maurice Goodman**, professor emeritus of physiology; AB, Brandeis, 1956; AM, Harvard, 1957; PhD, 1960
- Joel M. Gore**, the Edward Budnitz Professor of Cardiovascular Medicine and professor of medicine; BA, Brandeis, 1971; MS, Boston, 1974; MD, University of Calgary, 1977
- Heinrich Gottlinger**, professor of molecular medicine; MD, Ludwig Maximilians Universität, München, 1983; PhD, 1984



**Matthew J. Gounis**, *assistant professor of radiology; PhD, Miami, 2003*

**Ellen M. Gravallese**, *professor of medicine; MD, Columbia Physicians & Surgeons, 1981*

**Michael R. Green**, *the Lambi and Sarah Adams Chair in Genetic Research; Howard Hughes Medical Institute Investigator; professor of molecular medicine, biochemistry & molecular pharmacology and surgery; director, Program in Gene Function and Expression; BS, Wisconsin, 1974; MD, Washington University, 1981; PhD, 1981*

**Sharone Green**, *associate professor of medicine; MD, Eastern Virginia Medical School, 1986*

**Dale L. Greiner**, *professor of medicine; BS, Iowa, 1974; PhD, 1978*

**Peter Grigg**, *professor of physiology; BS, Rensselaer Polytechnic Institute, 1961; MS, Syracuse, 1965; PhD, State University of New York Upstate, 1969*

**Steven R. Grossman**, *assistant professor of cancer biology and medicine; AB, Princeton, 1984; PhD, Chicago, 1989; MD, 1991*

**Jerry H. Gurwitz**, *the Dr. John Meyers Professor of Primary Care Medicine and professor of medicine and family medicine & community health; AB, Dartmouth College, 1978; MD, UMass Worcester, 1983*

**Kirsten A. Hagstrom**, *assistant professor of molecular medicine; BA, Oberlin College, 1989; MA, Princeton, 1993; PhD, 1998*

**Annett Halle**, *research instructor of medicine; MD, Humboldt-University Berlin, 2003; PhD, 2005*

**Joanne A. Harder**, *research assistant professor of psychiatry; BSC, University of Leeds, 1991; PhD, University of Bradford, 1994*

**J. Lee Hargraves**, *research associate professor of family medicine & community health; MA, Montana, 1985; PhD, Boston College, 1994*

**Lawrence Hayward**, *associate professor of neurology and physiology; BS, Washington University, 1982; PhD, Baylor College of Medicine, 1987; MD, 1989*

**Stephen O. Heard**, *chair and professor of anesthesiology and professor of surgery; BSE, Princeton, 1975; MD, Texas, 1978*

**Jay S. Himmelstein**, *professor of family medicine & community health and medicine; BA, Johns Hopkins, 1974; MD, Maryland, 1978; MPH, Harvard, 1980; MS, 1982*

**Douglas A. Hinerfeld**, *research assistant professor of biochemistry & molecular pharmacology; PhD, Emory, 2001*

**Donald J. Hnatowich**, *professor of radiology; BSC, University of Manitoba, 1963; MSC, 1964; PhD, Massachusetts Institute of Technology, 1968*

**JeanMarie Houghton**, *associate professor of medicine and cancer biology; BA, Rutgers, 1985; MD, University of Medicine & Dentistry of New Jersey, 1989; PhD, 2001*

**Eric S. Huseby**, *assistant professor of pathology; PhD, Washington, 2000*

**Mitsuo Ikebe**, *professor of physiology; BS, Tokyo Institute of Technology, 1975; MS, 1977; PhD, Osaka University, 1982*

**Anthony N. Imbalzano**, *associate professor of cell biology; BA, Pennsylvania, 1986; PhD, Harvard, 1991*

**Alka Indurkha**, *associate professor of pediatrics; MS, Rutgers, 1987*

**Ronald M. Iorio**, *associate professor of molecular genetics & microbiology; BA, UMass Boston, 1969; MS, Boston College, 1972; PhD, 1979*

**Yicktung T. Ip**, *associate professor of molecular medicine, biochemistry & molecular pharmacology and cell biology; BS, National Defence University, 1984; PhD, Iowa, 1989*

**Allan S. Jacobson**, *chair and professor of molecular genetics & microbiology; BA, Queens, 1966; PhD, Brandeis, 1971*

**Duane D. Jenness**, *associate professor of molecular genetics & microbiology; BS, Oregon State, 1974; PhD, University of California Berkeley, 1980*

**Julie A. Jonassen**, *associate professor of physiology; BS, Michigan, 1974; PhD, 1980*

**Stephen N. Jones**, *associate professor of cell biology and cancer biology; BA, Virginia, 1982; PhD, Vanderbilt, 1988*

**Jae U. Jung**, *associate professor of molecular genetics & microbiology; BS, Seoul National University, 1982; 1984; PhD, California, 1989*

**Joonsoo Kang**, *associate professor of pathology; BSC, University of Toronto, 1986; PhD, 1993*

**Paul D. Kaufman**, *associate professor of molecular medicine; BA, University of California Berkeley, 1985; PhD, Massachusetts Institute of Technology, 1992*

**Jeanne D. Keller**, *assistant professor of cell biology and radiology; AB, Radcliffe College, 1951; MD, Boston, 1955*

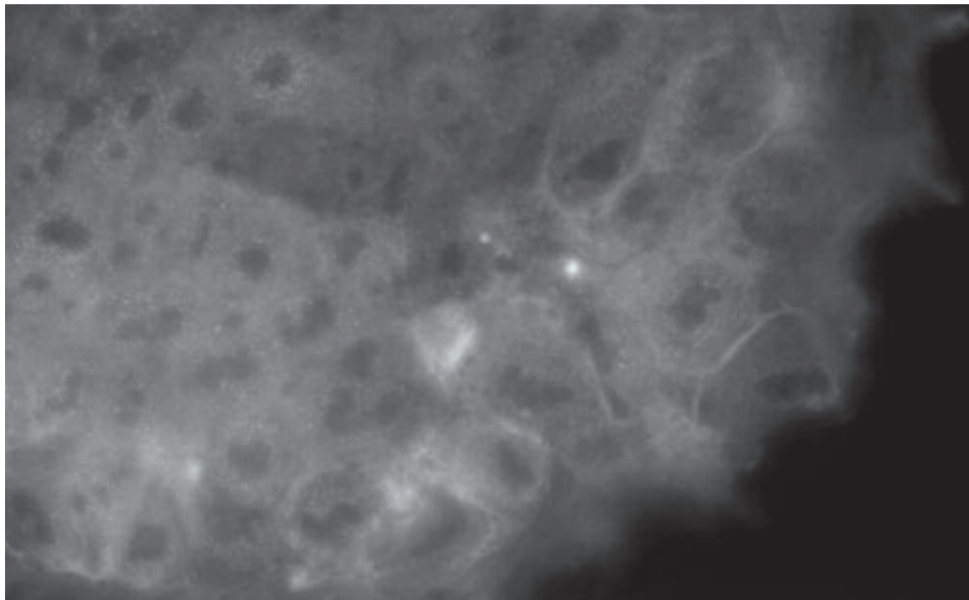
**Michelle A. Kelliher**, *associate professor of cancer biology; BA, Smith College, 1981; MS, Yale, 1985; PhD, Tufts, 1991*

**Daniel L. Kilpatrick**, *associate professor of physiology; BA, University of California San Diego, 1974; PhD, Duke, 1980*

**Jean King**, *professor of psychiatry; BS, St. Francis College, 1979; MS, City University of New York, 1982; PhD, New York University, 1988*



- Michael A. King**, professor of radiology; BA, State University of New York Oswego, 1969; MS, State University of New York Albany, 1971; PhD, Rochester, 1977
- Robert A. Klugman**, clinical associate professor of medicine; BS, Wisconsin, 1973; MD, UMass Worcester, 1977
- Kendall L. Knight**, associate dean of the Graduate School of Biomedical Sciences and professor of biochemistry & molecular pharmacology; BA, Clark, 1975; PhD, University of California Riverside, 1981
- William R. Kobertz**, assistant professor of biochemistry & molecular pharmacology; BS, University of California Berkeley, 1991; PhD, Massachusetts Institute of Technology, 1998
- Steven B. Koevary**, associate professor of cell biology; PhD, Mount Sinai School of Medicine, 1981
- Richard F. Konz**, research assistant professor of medicine; BS, Maine, 1984
- Hardy Kornfeld**, professor of medicine; BA, Bennington College, 1974; MD, Boston, 1978
- Timothy F. Kowalik**, associate professor of molecular genetics & microbiology; BS, Belmont Abbey College, 1982; MS, Utah State, 1986; PhD, 1989
- Evelyn A. Kurt-Jones**, research associate professor of medicine; BS, Tufts, 1974; PhD, Connecticut, 1983
- Stephen Lambert**, assistant professor of cell biology; BSC, University of Hertfordshire, 1982; PhD, University of The Witwatersrand, 1992
- David Lambright**, professor of molecular medicine and biochemistry & molecular pharmacology; BS, University of Lowell, 1984; PhD, Stanford, 1992
- Lucia Languino**, professor of cancer biology, cell biology and radiation oncology; PhD, Negri Institute of Pharmacology, 1984
- Nancy R. LaPelle**, assistant professor of medicine; BA, Pennsylvania, 1966; MA, Cornell, 1968; MA, The Fielding Institute, 1993; PhD, 1997
- David S. Lapointe**, assistant professor of cell biology; BA, Pennsylvania, 1970; PhD, Florida, 1979
- Eicke Latz**, research assistant professor of medicine; MD, Freie Universität Berlin, 1998
- Jeanne B. Lawrence**, professor of cell biology; BA, Stephen F. Austin State University, 1973; MS, Rutgers, 1975; PhD, Brown, 1982
- Nathan Lawson**, associate professor of molecular medicine; BS, Rhode Island, 1994; PhD, Yale, 1999
- Ann G. Lawthers**, assistant professor of family medicine & community health; AB, Wellesley College, 1974; SM, Harvard School of Public Health, 1979; ScD, 1986
- Mary M. Lee**, professor of pediatrics; BA, Harvard College, 1979; MD, State University of New York Buffalo, 1983
- Tzumin Lee**, associate professor of neurobiology; MD, National Yang-Ming, 1989; PhD, Johns Hopkins, 1996
- Andrew B. Leiter**, professor of medicine; AB, Pennsylvania, 1971; MD, Case Western Reserve, 1978; PhD, 1978
- Edward H. Leiter**, research professor of medicine; BS, Princeton, 1964; MS, Emory, 1966; PhD, 1968
- Stephenie C. Lemon**, assistant professor of medicine; BS, UMass Amherst, 1995; MS, 1999; PhD, Brown, 2002
- José R. Lemos**, professor of physiology and biochemistry & molecular pharmacology; BA, Occidental College, 1970; PhD, Wesleyan, 1979
- Jack L. Leonard**, professor of physiology and anesthesiology; BA, California State University, 1971; PhD, University of California Berkeley, 1976
- John M. Leong**, professor of molecular genetics & microbiology; BA, Brown, 1979; MD, PhD, 1987
- Stuart M. Levitz**, professor of medicine and molecular genetics & microbiology; BA, New York University, 1975; MD, 1979
- Brian Lewis**, assistant professor of molecular medicine; BS, University of California Los Angeles, 1991; PhD, Johns Hopkins, 1997
- Hong-Sheng Li**, assistant professor of neurobiology; BS, Wuhan University, 1991; PhD, Shanghai Brain Research Institute, 1996
- Wenjun Li**, research assistant professor of medicine; BS, Fudan University, 1986; MS, Chinese Academy of Science, 1990; MS, UMass Amherst, 1997; PhD, 2003
- Jane B. Lian**, professor of cell biology; BS, Fordham, 1965; MS, Rochester, 1967; PhD, Boston, 1972
- Daniel Libraty**, associate professor of medicine; BS, University of California Los Angeles, 1985; MD, University of California San Diego, 1989
- Charles W. Lidz**, research professor of psychiatry; BA, Yale, 1967; PhD, Harvard, 1974
- Egil Lien**, associate professor of medicine and molecular genetics & microbiology; MS, Norwegian Institute of Technology, 1992; PhD, Faculty of Medicine, 1998
- Lawrence Lifshitz**, associate professor of physiology; BA, Harvard, 1980; MS, North Carolina, 1983; PhD, 1987
- Craig M. Lilly**, professor of medicine, anesthesiology and surgery; MD, Oregon Health Sciences University, 1984
- Wen-Chieh Lin**, assistant professor of family medicine & community health; PhD, Minnesota, 2000
- Shan Lu**, professor of medicine and biochemistry & molecular pharmacology; MD, Nanjing Medical College, 1982; PhD, UMass Worcester, 1990; MHA, Clark, 1991
- Roger S. Luckmann**, associate professor of family medicine & community health; BA, Yale, 1971; MD, Boston, 1976; MPH, California, 1986
- Elizabeth J. Luna**, professor of cell biology; BA, Southern Illinois, 1972; PhD, Stanford, 1977
- Jianyuan Luo**, assistant professor of cancer biology; BS, Peking University, 1986; MS, 1990; PhD, Kentucky, 1999
- Stephen R. Lyle**, assistant professor of cancer biology; BA, Chicago, 1988; MS, 1988; MD, PhD, 1995
- Yunsheng Ma**, assistant professor of medicine; MPH, UMass Amherst, 1996; PhD, 2002
- John M. Madison**, professor of medicine and physiology; BA, Carleton College, 1975; MD, Harvard, 1979
- Martin G. Marinus**, professor of biochemistry & molecular pharmacology; BSC, University Otago, 1965; PhD, 1968
- William L. Marshall**, associate professor of medicine; AB, Harvard, 1982; MD, Columbia, 1986
- Francesca Massi**, assistant professor of biochemistry & molecular pharmacology; PhD, Boston, 2001
- Zdenka Matijasevic**, assistant professor of cell biology and biochemistry & molecular pharmacology; BS, University of Zagreb, 1971; MS, 1979; PhD, 1982
- C. Robert Matthews**, the Arthur F. and Helen P. Koskinas Professor of Biochemistry & Molecular Pharmacology and chair and professor of biochemistry & molecular pharmacology; BS, Minnesota, 1968; MS, Stanford, 1969; PhD, 1974
- Peter McCaffery**, associate professor of cell biology; BS, Victoria University of Wellington, 1982; PhD, Otago University, 1987
- Dannel McCollum**, associate professor of molecular genetics & microbiology; BS, Illinois, 1987; PhD, University of California San Diego, 1993
- William J. McIlvane**, professor of psychiatry; BA, New York University, 1974; MA, Northeastern, 1978; PhD, 1986
- Thomas J. McLaughlin**, professor of pediatrics; BS, Kings College, 1969; MA, State of New York Health Sciences, 1973; MDIV, Notre Dame, 1983; DS, Harvard, 1989
- Haley E. Melikian**, assistant professor of psychiatry and biochemistry & molecular pharmacology; BS, UMass Amherst, 1983; PhD, Emory, 1995
- Craig C. Mello**, the Blais University Chair in Molecular Medicine; Howard Hughes Medical Institute Investigator; professor of molecular medicine and cell biology; BS, Brown, 1982; PhD, Harvard, 1990
- Arthur M. Mercurio**, professor of cancer biology; BS, Rutgers, 1975; MA, Columbia, 1976; MPhil, 1978; PhD, 1981
- Alan D. Michelson**, professor of pediatrics, medicine, pathology and surgery; MBBS, University of Adelaide, 1973
- Stephen C. Miller**, assistant professor of biochemistry & molecular pharmacology; BS, University of Wisconsin Madison, 1991; PhD, University of California San Francisco, 1998
- Teresa V. Mitchell**, assistant professor of psychiatry; BA, North Carolina, 1987; MA, New York University, 1991; PhD, Indiana, 1996
- Melissa J. Moore**, professor of biochemistry & molecular pharmacology; BS, College of William and Mary, 1984; PhD, Massachusetts Institute of Technology, 1994
- Maria A. Morabito**, assistant professor of cell biology; PhD, University La Sapienza, 1979
- John P. Mordes**, professor of medicine; AB, Harvard College, 1969; MD, Harvard, 1973
- Trudy G. Morrison**, professor of molecular genetics & microbiology; BA, Wellesley College, 1967; PhD, Tufts, 1972



**Abraham N. Morse**, associate professor of obstetrics & gynecology; BA, Swarthmore College, 1988; MD, Harvard, 1993

**Mary Munson**, assistant professor of biochemistry & molecular pharmacology and cell biology; AB, Washington University, 1989; PhD, Yale, 1996

**Kenan C. Murphy**, assistant professor of molecular genetics & microbiology; BA, Catholic University of America, 1976; PhD, Maryland, 1983

**Peter E. Newburger**, the Ali and John Pierce Chair in Pediatric Hematology/Oncology and professor of pediatrics, cancer biology and molecular genetics & microbiology; BA, Haverford College, 1970; MD, Harvard, 1974

**Joanne Nicholson**, professor of psychiatry and family medicine & community health; AB, Syracuse, 1973; MS, Pennsylvania State, 1976; PhD, 1979

**Jeffrey A. Nickerson**, associate professor of cell biology; BS, Michigan State, 1976; PhD, 1985

**Sheila B. Noone**, assistant professor of obstetrics & gynecology; BS, Worcester State College, 1984; MPH, Boston, 1986; PhD, Union Institute, 2000

**Ira S. Ockene**, the David J. and Barbara D. Milliken Professor of Preventive Cardiology and professor of medicine; MD, Albert Einstein College of Medicine, 1966

**Judith K. Ockene**, the Barbara Helen Smith Chair in Preventive and Behavioral Medicine and professor of medicine; MEd, Boston College, 1974; PhD, 1979

**Robert J. O'Connell**, professor of physiology; PhD, State University of New York Syracuse, 1968

**Darlene O'Connor**, associate professor of family medicine & community health; BA, Westfield State College, 1976; MA, Southern Illinois, 1981; PhD, Brandeis, 1987

**Paul R. Odgren**, research assistant professor of cell biology; BS, UMass Amherst, 1989; PhD, UMass Worcester, 1995

**Nsidinanya Okike**, professor of surgery; MD, Karl-Eberhard University, 1969

**William C. Okulicz**, associate professor of physiology; BS, Rensselaer Polytechnic Institute, 1968; MPH, Yale, 1971; PhD, Connecticut, 1980

**David Paydarfar**, professor of neurology and physiology; BS, Duke, 1980; MD, North Carolina, 1985

**Gregory J. Pazour**, associate professor of molecular medicine; BS, South Dakota State, 1986; BS, 1986; PhD, Minnesota, 1991

**Lori Pbert**, associate professor of medicine; BA, Connecticut, 1982; MA, West Virginia, 1985; PhD, 1988

**Thoru Pederson**, the Vitold Arnett Professor of Cell Biology and professor of biochemistry & molecular pharmacology; BA, Syracuse, 1963; PhD, 1968

**Andrea J. Pereira**, research assistant professor of medicine; BA, Regis College, 1978; PhD, Brandeis, 1987

**Craig L. Peterson**, professor of molecular medicine and biochemistry & molecular pharmacology; BS, Washington, 1983; PhD, University of California Los Angeles, 1988

**Robert A. Phillips**, professor of medicine; MD, Mount Sinai School of Medicine, 1980; PhD, 1980

**Julie G. Pilitsis**, assistant professor of surgery; BS, Rensselaer Polytechnic Institute, 1996; MD, Albany Medical College, 1998; PhD, Wayne State, 2002

**Daniel A. Pollen**, professor of neurology and physiology; AB, Harvard College, 1956; MD, Harvard, 1960

**Anthony R. Poteete**, professor of molecular genetics & microbiology; AB, Harvard College, 1973; PhD, Massachusetts Institute of Technology, 1977

**Peter M. Pryciak**, associate professor of molecular genetics & microbiology; BS, University of California Los Angeles, 1983; PhD, University of California San Francisco, 1992

**Sanjay Ram**, assistant professor of medicine; MD, Bombay University, 1991

**Tariq M. Rana**, professor of biochemistry & molecular pharmacology; BSc, Islamia University, 1983; MSC, Quaid-I Azam University, 1986; PhD, University of California Davis, 1990

**Oliver J. Rando**, assistant professor of biochemistry & molecular pharmacology; MD, Stanford, 2002; PhD, 2002

**George W. Reed**, associate professor of medicine; BA, Washington College, 1975; PhD, Maryland, 1983

**Steven M. Reppert**, the Higgins Family Professor of Neuroscience and chair and professor of neurobiology; BS, Nebraska, 1973; MD, 1973; MA, Harvard, 1993

**Nicholas R. Rhind**, assistant professor of biochemistry & molecular pharmacology and cell biology; BA, Brown, 1989; BSc, 1989; PhD, University of California Berkeley, 1995

**Peter A. Rice**, professor of medicine; MD, Pennsylvania, 1969

**Joel Richter**, professor of molecular medicine; BA, Indiana, 1974; MS, Arizona State, 1976; PhD, 1979

**Ann R. Rittenhouse**, associate professor of physiology; AB, Mt. Holyoke College, 1976; PhD, Boston, 1984

**Jaime Rivera**, assistant professor of cell biology; PhD, University of Texas Houston

**Kenneth L. Rock**, chair and professor of pathology; BA, Washington University, 1974; MD, Rochester, 1978

**Evgeny I. Rogaev**, professor of psychiatry; PhD, Academy of Medical Science, 1988; DRSCI, 1998

**Alan G. Rosmarin**, professor of medicine; BA, Vassar College, 1977; MD, Rutgers, 1981

**Alonzo H. Ross**, professor of biochemistry & molecular pharmacology; BA, Cornell, 1972; PhD, Stanford, 1977

**Aldo A. Rossini**, the William and Doris Krupp Professor of Medicine and professor of medicine and molecular medicine; BS, Dayton, 1963; MD, Saint Louis, 1968

**Alan L. Rothman**, professor of medicine; BA, Boston, 1979; MD, 1983

**Anthony J. Rothschild**, the Irving S. and Betty Brudnick Chair in Psychiatry and professor of psychiatry; AB, Princeton, 1975; MD, Pennsylvania, 1979

**William E. Royer**, professor of biochemistry & molecular pharmacology; BS, Pennsylvania State, 1976; PhD, Johns Hopkins, 1984

**Katherine F. Ruiz de Luzuriaga**, professor of pediatrics and medicine; BS, Massachusetts Institute of Technology, 1978; MS, 1980; MD, Tufts, 1984

**Sean P. Ryder**, assistant professor of biochemistry & molecular pharmacology; BS, New Hampshire, 1995; PhD, Yale, 2001

**Charles G. Sagerström**, associate professor of biochemistry & molecular pharmacology; BA, Macalester College, 1987; PhD, Stanford, 1993

**Michael Sanderson**, professor of physiology; BS, University of Southampton, 1976; PhD, 1981

**Christopher M. Sasseti**, assistant professor of molecular genetics & microbiology; BS, Santa Clara, 1990; PhD, University of California San Francisco, 1999

**Celia A. Schiffer**, professor of biochemistry & molecular pharmacology; BA, University of Chicago School of Medicine, 1986; PhD, University of California San Francisco, 1992

**Madelyn R. Schmidt**, research assistant professor of molecular genetics & microbiology; BS, Northeastern, 1977; PhD, UMass Worcester, 1991

**Thomas A. Schoenfeld**, research associate professor of physiology; BA, Lawrence University, 1971; MS, Rutgers, 1973; PhD, 1978

**Gerald Schwarting**, professor of cell biology; BS, Connecticut, 1969; PhD, University of Munich, 1974

**William J. Schwartz**, professor of neurology; BS, University of California Irvine, 1971; MD, University of California San Francisco, 1974

**Liisa K. Selin**, research associate professor of pathology; MD, Dalhousie University, 1979; PhD, University of Manitoba, 1993

**David V. Serreze**, research associate professor of medicine; BS, Maine, 1979; MS, 1982; PhD, 1990

**Shimul A. Shah**, assistant professor of surgery; BS, Pennsylvania State College of Medicine, 1995; MD, Thomas Jefferson Medical College, 1997

**Albert Shahnarian**, research assistant professor of anesthesiology; AE, Worcester Junior College, 1961; BS, Worcester Polytechnic Institute, 1969; MS, 1973; PhD, 1983

**Leslie M. Shaw**, associate professor of cancer biology; BS, Trinity College, 1987; PhD, Harvard, 1994

**Leonard D. Shultz**, research professor of medicine; BA, Northeastern, 1967; PhD, UMass Amherst, 1972

**Jerald Silverman**, professor of pathology; BS, Cornell, 1964; DVM, 1966; MPS, New School for Social Research, 1985

**Neal S. Silverman**, associate professor of medicine; BA, University of California Berkeley, 1989; PhD, Massachusetts Institute of Technology, 1996

**Karl Simin**, assistant professor of cancer biology; PhD, Utah, 2001

**Joshua J. Singer**, professor of physiology and biochemistry & molecular pharmacology; SB SM EE, Massachusetts Institute of Technology, 1966; PhD, Harvard, 1970

**Ravindra Narayan Singh**, assistant professor of medicine and molecular genetics & microbiology; BSc, Banaras Hindu University, 1983; MSc, 1985; PhD, Russian Academy of Sciences, 1993

**Greenfield Sluder**, professor of cell biology; AB, Middlebury College, 1968; PhD, Pennsylvania, 1976

**Hayla K. Sluss**, assistant professor of cancer biology; PhD, UMass Worcester, 1998

**Eric G. Smith**, assistant professor of psychiatry; BA, Johns Hopkins, 1985; MA, University of California Berkeley, 1988; MJ, 1990; MD, Duke, 2000

**Thomas W. Smith**, professor of pathology and neurology; BS, Ohio State, 1968; MD, Cornell, 1972

**Merav Socolovsky**, assistant professor of pediatrics; BA, Cambridge, 1983; MBBS, University College London, 1986; PhD, Cambridge, 1993

**Babs R. Soller**, professor of anesthesiology and research professor of surgery; BS, Union College, 1975; MA, Princeton, 1977; PhD, 1980

**Mohan Somasundaran**, research associate professor of pediatrics; BS, Kerala University, 1976; MS, 1978; PhD, Calcutta University, 1983

**Jie Song**, assistant professor of orthopedics & physical rehabilitation and cell biology; PhD, Michigan State, 1999

**Christopher H. Sotak**, adjunct professor of radiology; BA, Northern Colorado, 1975; MA, 1980; PhD, Syracuse, 1983; MBA, Worcester Polytechnic Institute, 1995

**Janet Stavnezer**, professor of molecular genetics & microbiology and pathology; BA, Swarthmore College, 1966; PhD, Johns Hopkins, 1971

**Gary S. Stein**, the Gerald L. Haidak, MD, and Zelda S. Haidak Professor of Cell Biology and chair and professor of cell biology; BA, Hofstra, 1965; MS, 1966; PhD, Vermont, 1969

**Janet L. Stein**, professor of cell biology; BS, Elizabethtown College, 1968; MA, Princeton, 1971; PhD, 1975

**Lawrence J. Stern**, professor of pathology and biochemistry & molecular pharmacology; BA, Cornell, 1983; PhD, Massachusetts Institute of Technology, 1989

**Mario Stevenson**, the David J. Frelander Professor of AIDS Research and professor of molecular medicine and molecular genetics & microbiology; BSc, Glasgow College of Technology, 1979; PhD, University of Strathclyde, 1984

**Jeffrey S. Stoff**, professor of medicine and physiology; BS, Hobart College, 1964; MD, State University of New York Buffalo, 1968

**John L. Sullivan**, professor of pediatrics, molecular medicine, molecular genetics & microbiology and pathology; BS, Le Moyne College, 1968; MD, State University of New York Upstate, 1972

**Gyongyi Szabo**, professor of medicine; MD, Pecs University, 1984; PhD, National Academy of Sciences, 1991

**Eva Szomolanyi-Tsuda**, research assistant professor of pathology; MD, Semmelweis University of Medical Sciences, 1976

**Andrew Tapper**, assistant professor of psychiatry; PhD, Vanderbilt, 2001

**Masanori Terajima**, assistant professor of medicine; BS, Tohoku University School of Medicine, 1988; MD, 1988; PhD, 1994

**Siu Ing The**, assistant professor of molecular medicine; MS, Vrije Universiteit, 1990; PhD, Universiteit Van Amsterdam, 1996

**William E. Theurkauf**, professor of molecular medicine; BA, Brandeis, 1980; PhD, 1988

**Donald J. Tipper**, professor emeritus of molecular genetics & microbiology; BSc, University of Birmingham, 1956; PhD, 1959

**Heidi A. Tissenbaum**, associate professor of molecular medicine; BSc, Concordia, 1986; MSc, Ottawa University School of Medicine, 1988; PhD, Harvard, 1997

**Steven N. Treistman**, professor of psychiatry and neurobiology; BA, State University of New York Binghamton, 1967; PhD, North Carolina, 1972

**Jennifer F. Tseng**, assistant professor of surgery and cancer biology; BS, Stanford, 1990; MPH, Harvard, 2007; MD, University of California, 1995

**Richard A. Tuft**, research associate professor of physiology; BS, Pennsylvania State, 1963; MS, Massachusetts Institute of Technology, 1966; PhD, Worcester Polytechnic Institute, 1972

**Marc E. Uknis**, associate professor of surgery and molecular medicine; BA, Temple, 1986; MD, 1990



**Carole C. Upshur**, professor of family medicine & community health; AB, Southern California, 1969; EdM, Harvard, 1970; EdD, 1975

**Fumihiko Urano**, assistant professor of molecular medicine; MD, Keio University, 1994; PhD, 1998

**Lambertus van den Berg**, assistant professor of molecular medicine; MS, Utrecht University, 1990; PhD, 1994

**Andre J. van Wijnen**, associate professor of cell biology; BSc, Utrecht University, 1983; MSc, 1987; PhD, UMass Worcester, 1992

**Michael R. Volkert**, professor of molecular genetics & microbiology; BS, Wisconsin, 1971; PhD, Rutgers, 1977

**Scott Waddell**, associate professor of neurobiology; BSc, University of Dundee, 1991; PhD, University of London, 1996

**Marian J. Walhout**, associate professor of molecular medicine; BS, Utrecht University, 1992; PhD, 1997

**John V. Walsh**, professor of physiology and biochemistry & molecular pharmacology; AB, Boston College, 1964; MD, Harvard, 1970

**Yong X. Wang**, assistant professor of molecular medicine; BS, Peking University, 1989; PhD, Iowa, 1999

**Yu-Li Wang**, professor of physiology and cell biology; BS, National Taiwan University, 1973; PhD, Harvard, 1980

**David R. Weaver**, professor of neurobiology; BS, Michigan State, 1981; PhD, 1985

**Linda F. Weinreb**, professor of family medicine & community health and pediatrics; BA, Washington University School of Medicine, 1977; MD, Milton S. Hershey Medical School, 1981

**Sharada G. Weir**, assistant professor of family medicine & community health; DPhil, University of Oxford, 1998

**Raymond M. Welsh**, professor of pathology and molecular genetics & microbiology; BS, UMass Amherst, 1967; PhD, 1972

**Zhiping Weng**, professor of biochemistry & molecular pharmacology; BS, University of Science & Technology, 1992; PhD, Boston, 1997

**George B. Witman**, the George F. Booth Chair in the Basic Sciences and professor of cell biology; BA, University of California Riverside, 1967; PhD, Yale, 1972

**Bruce A. Woda**, professor of pathology; BS, Brooklyn College, 1971; MD, State University of New York Downstate, 1975

**Merrill K. Wolf**, professor of cell biology and neurology; BA, Yale, 1945; MD, Case Western Reserve, 1956

**Scot A. Wolfe**, assistant professor of biochemistry & molecular pharmacology; BS, California Institute of Technology, 1990; AM, Harvard, 1992; PhD, 1996

**Robert T. Woodland**, associate professor of molecular genetics & microbiology; BS, Villanova, 1967; MS, Ohio State, 1969; PhD, Pennsylvania, 1974

**Lan Xu**, assistant professor of molecular medicine; BS, School of Life Sciences Fudan, 1990; MS, Dalhousie University, 1993; PhD, University of California San Diego, 1998

**Zuoshang Xu**, professor of biochemistry & molecular pharmacology and cell biology; MD, Shanghai Medical College, 1982; PhD, Washington University, 1990

**Motojiro Yoshihara**, assistant professor of neurobiology; PhD, University of Tokyo, 1993

**Phillip D. Zamore**, the Gretchen Stone Cook Chair in Biomedical Sciences; Howard Hughes Medical Institute Investigator; professor of biochemistry & molecular pharmacology; AB, Harvard, 1986; PhD, 1992

**Maria L. Zapp**, assistant professor of molecular medicine and molecular genetics & microbiology; BA, Wilson College, 1980; PhD, Baylor College of Medicine, 1989

**Hong Zhang**, assistant professor of cell biology; PhD, Michigan State; 1998

**Jianhua Zhou**, assistant professor of medicine; BS, Fudan University, 1987; MS, 1989; PhD, Pittsburgh, 1994

**Ronghua Zhuge**, research assistant professor of physiology; BS, Zhejiang University, 1983; MS, Nanjing Agricultural University, 1986; PhD, Iowa State, 1995

**Jill A. Zitzewitz**, research assistant professor of biochemistry & molecular pharmacology; BA, Carthage College, 1986; MS, Washington State, 1988; PhD, 1991

**Ralph Zottola**, instructor of biochemistry & molecular pharmacology; BS, State University of New York Binghamton, 1985; PhD, UMass Worcester, 1995

**Robert B. Zurier**, professor emeritus of medicine and cell biology; BS, Rutgers, 1955; MD, Texas Southwest Medical, 1962

