

Junos Pulse VPN Instructions Macintosh

Please use Mozilla Firefox as the web browser.

If you do not have Firefox installed you can download it here:

<http://www.mozilla.org/en-US/firefox/new/>

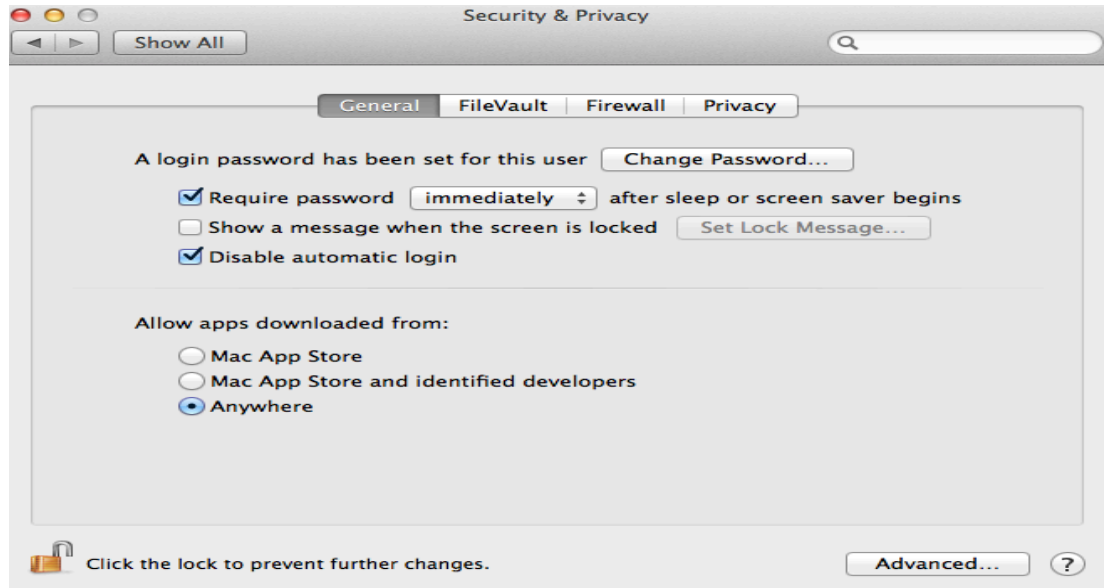
Also please make sure you are running Java 7, it would be helpful if you were running the latest java 7 51 here: <https://www.java.com/en/download/>

*If you are on Apple OS 10.8 Mountain Lion, or 10.9 Mavericks please modify your security and privacy settings to Allow apps downloaded from anywhere.

To do this, go into System Preferences, Security & Privacy, General tab.

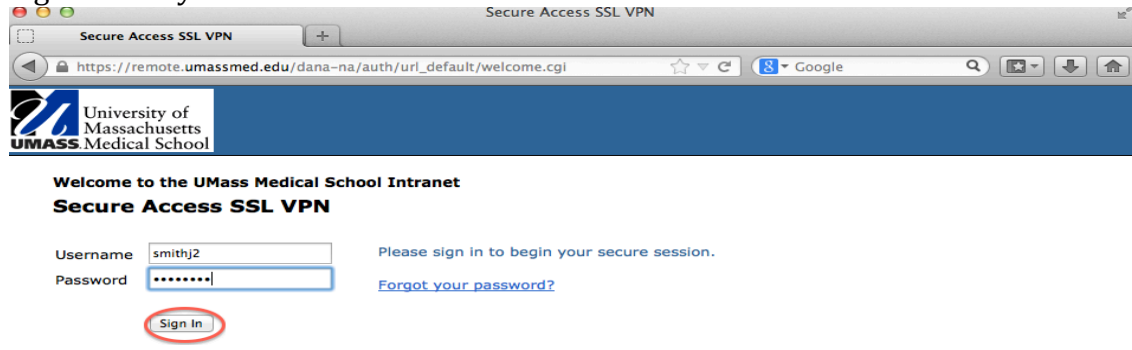
Unlock to make changes by clicking on the lock in the bottom left corner, you will be prompted for your mac password unlock.

Click on Anywhere and click on the lock to lock changes.

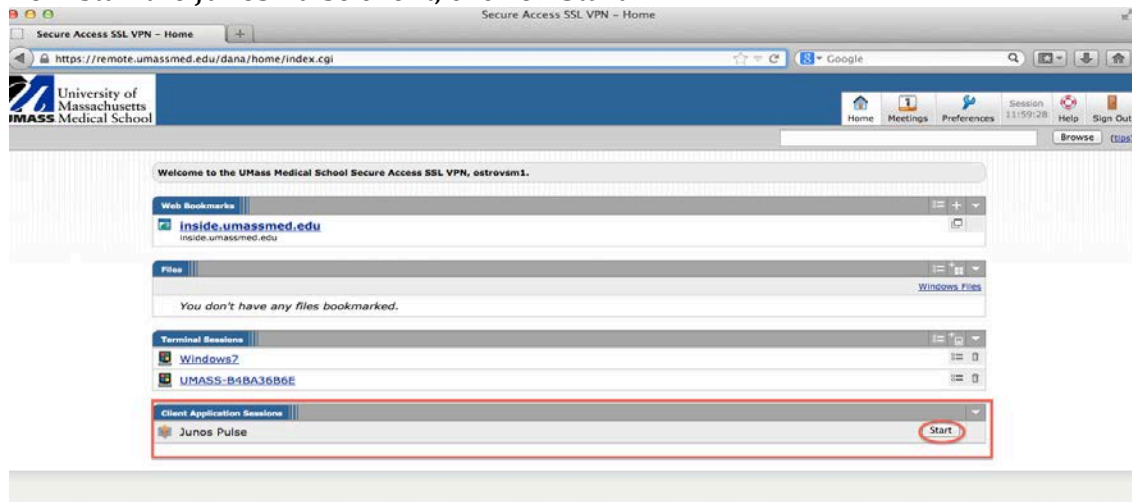


Open Firefox and enter <https://remote.umassmed.edu> in the address bar

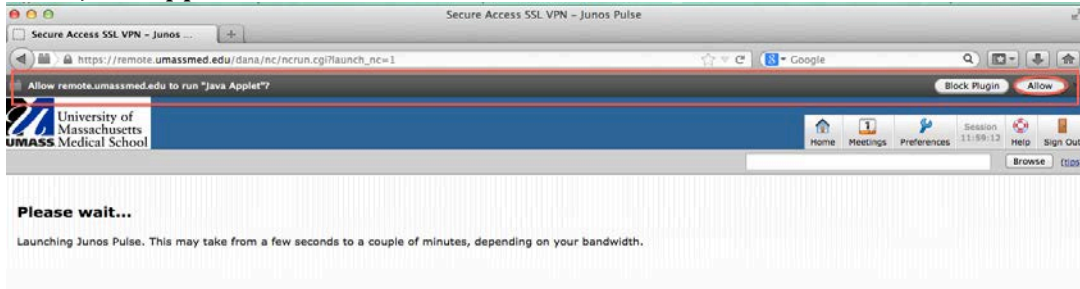
Sign in with your UMassMed network username and Password.



To install the Junos Pulse client, click on Start.



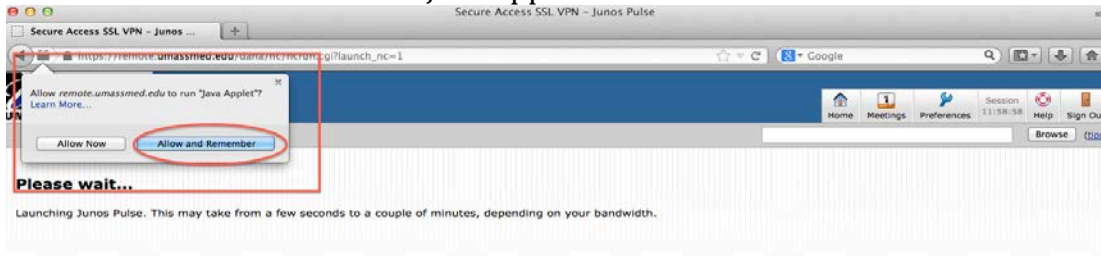
You may get a warning message towards the top “Allow remote.umassmed.edu to run “Java Applet” ? Click on Allow.



If an error prevents the Junos Pulse from loading properly, you can:

- [Check browser compatibility](#)
- [Continue](#). Not all functionality may be available.

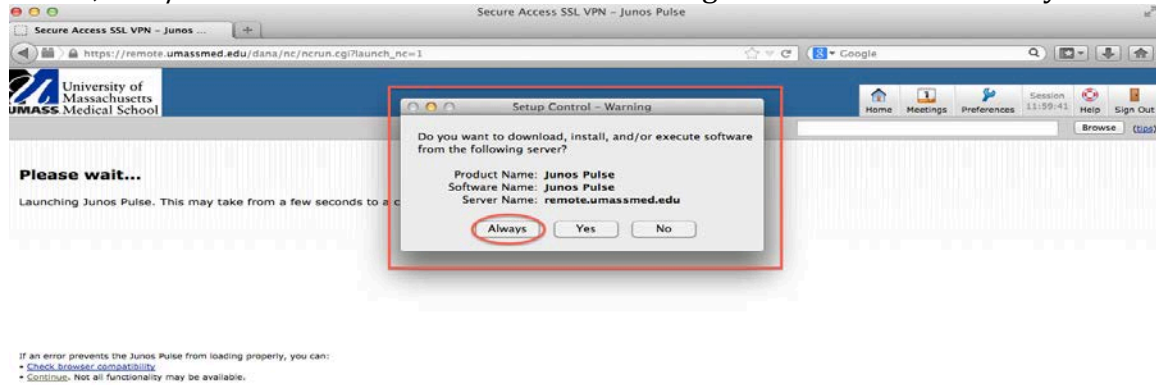
You may get another warning message towards the top left corner “ Allow remote.umassmed.edu to run “Java Applet” ? Click on Allow and Remember.



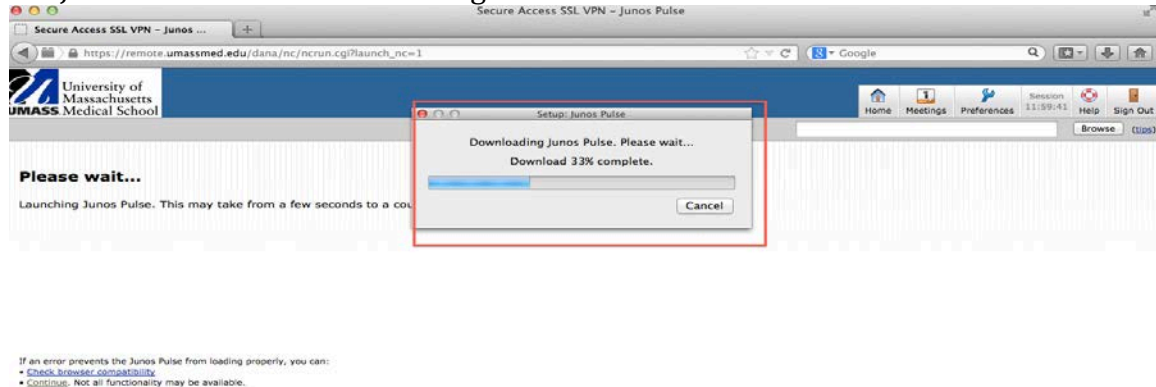
If an error prevents the Junos Pulse from loading properly, you can:

- [Check browser compatibility](#)
- [Continue](#). Not all functionality may be available.

When the Setup Control Window comes up asking “Do you want to download, install, and / or execute software from the following server ? “ Click on Always.

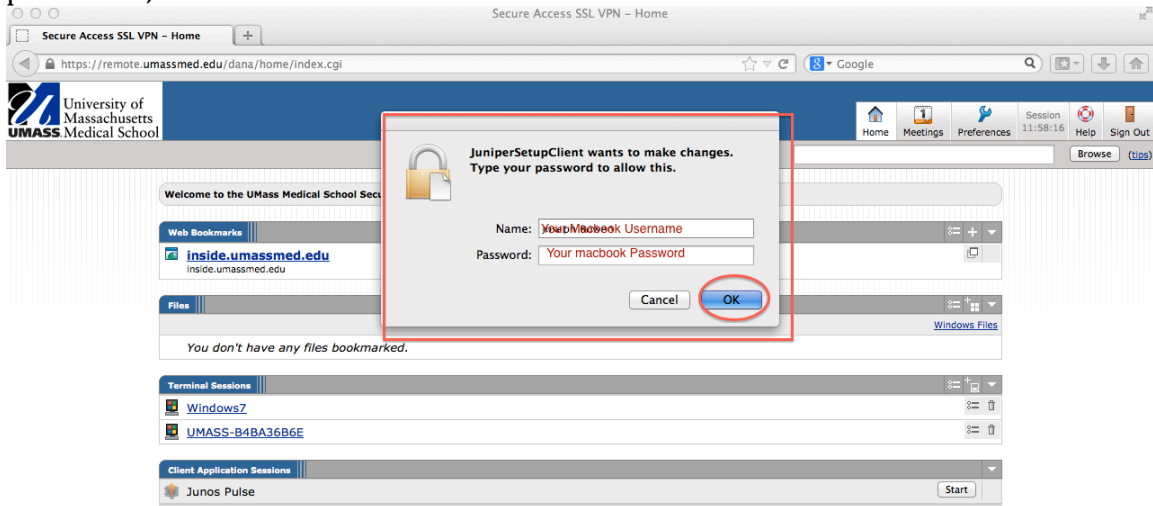


Let Junos Pulse finish downloading.

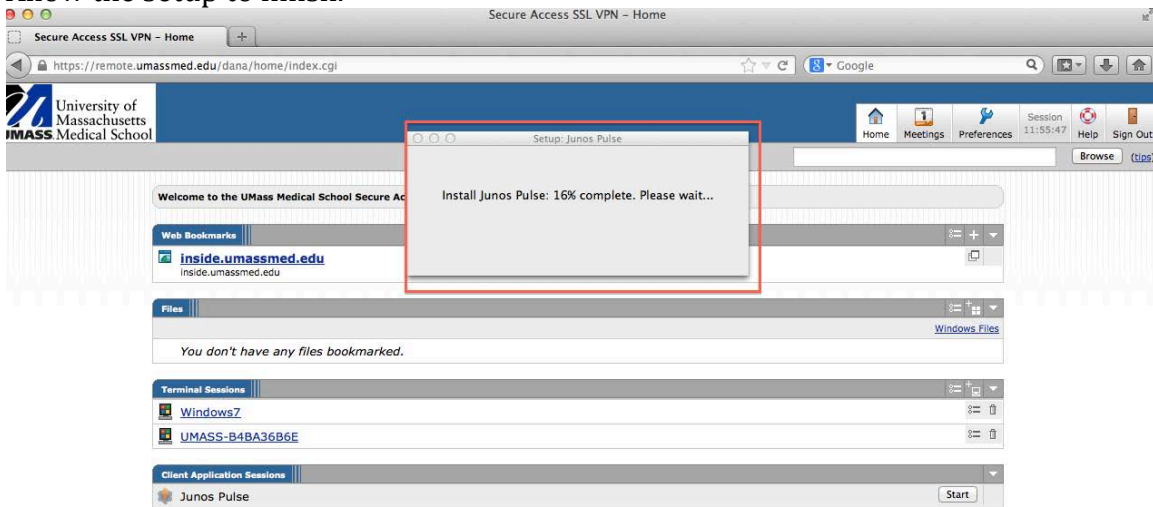


Once the client is downloaded you will see a window that says “ JuniperSetupClient wants to make changes. Type your password to allow this.” Enter your mac

password, and click OK.



Allow the setup to finish.



Junos Pulse is now installed and connected. If you need to disconnect, click on Disconnect.

