

The bone marrow niche for haematopoietic stem cells

Sean J. Morrison¹ & David T. Scadden²

Niches are local tissue microenvironments that maintain and regulate stem cells. Haematopoiesis provides a model for understanding mammalian stem cells and their niches, but the haematopoietic stem cell (HSC) niche remains incompletely defined and beset by competing models. Recent progress has been made in elucidating the location and cellular components of the HSC niche in the bone marrow. The niche is perivascular, created partly by mesenchymal stromal cells and endothelial cells and often, but not always, located near trabecular bone. Outstanding questions concern the cellular complexity of the niche, the role of the endosteum and functional heterogeneity among perivascular microenvironments.

Haematopoietic stem cell (HSC) niches are present in diverse tissues throughout development, beginning in the aorta–gonad–mesonephros (AGM) region and the yolk sac, followed by the placenta, fetal liver, spleen and bone marrow¹. Postnatally, the bone marrow is the primary site of HSC maintenance and haematopoiesis, but in response to haematopoietic stress the niche can shift to extramedullary sites. Defining niche components and how they work in concert to regulate haematopoiesis provides the opportunity to improve regeneration following injury or HSC transplantation and to understand how disordered niche function could contribute to disease. In this Review, we focus on the nature of the HSC niche in bone marrow because it is the subject of most of the recent research and controversies.

Historical context

Following Darwin's contributions to evolutionary theory, there was much emphasis on defining hierarchical evolutionary relationships among organisms. Morphological similarities were used to construct ancestral trees that connected complex multicellular organisms to an original monocellular “stem cell”². Lineage relationships were formulated, and biologist Ernst Haeckel proposed that cell organization in a developing organism was the recapitulation of events in the evolution of the species, with cells deriving from a stem cell equivalent³. Thirty years later, haematologist Artur Pappenheim proposed a less grand and more accurate formulation based on improved cell-morphology visualization techniques — that cells of the blood were related to one another, with mature cell types descending from a single cell type in a “unified view of haematopoiesis”⁴. In so doing, he articulated the hypothesis of tissue stem cells. This concept took about half a century to define experimentally through the inspired work of James Till and Ernest McCulloch, who showed that single cells could yield multilineage descendants while preserving the multipotency of the mother cell^{5–7}. The researchers gave substance to the idea of a stem cell and gave us methods to define the cardinal properties of those cells — self-renewal and differentiation.

Till and McCulloch based much of their work on an *in vivo* spleen colony-forming (CFU-S) assay now known to measure mainly multipotent progenitors rather than long-term self-renewing HSCs^{8,9}. The imprecise nature of that assay contributed to the formulation of the niche hypothesis by Ray Schofield in 1978. Recognizing that the putative CFU-S stem cells were less robust than cells of the bone marrow at reconstituting haematopoiesis in irradiated animals, he proposed that a specialized

bone marrow niche preserved the reconstituting ability of stem cells¹⁰. His colleagues at the University of Manchester concurrently sought to define what made bone marrow a nurturing context for HSCs, and haematologist Michael Dexter showed that largely mesenchymal ‘stromal’ cell cultures could maintain primitive haematopoietic cells *ex vivo*¹¹. Furthermore, another colleague, Brian Lord, progressively reamed long bone marrow cavities and showed that primitive cells tended to localize towards the endosteal margins, leading to the hypothesis that bone might regulate haematopoiesis¹² (Fig. 1).

These early studies were followed by *in vitro* evidence that osteoblasts differentiated in culture from human bone marrow stromal cells could produce haematopoietic cytokines and support primitive haematopoietic cells in culture¹³. This fostered the idea that bone cells might create the HSC niche, but it was essential to move to engineered mouse strains to test the hypothesis *in vivo*. Two studies followed, including a mouse model in which a promoter that was restricted in activity to osteoblastic cells was used to drive expression of a constitutively active parathyroid hormone receptor¹⁴. Along similar lines, Linheng Li's laboratory used a promoter that has since been shown to be restricted in bone marrow stroma to primitive and mature osteolineage cells¹⁵, to delete the *BMPr1a* gene¹⁶. In both models, the number of endosteal osteoblasts and the number of primitive haematopoietic cells (scored as stem cells given the measures in use at the time) increased. These data provided the first evidence of specific heterologous cells regulating mammalian stem cells *in vivo*, although it remained unclear whether the regulation was direct or indirect. This demonstrated that the niche was experimentally tractable, prompting a series of studies that have since refined our understanding of the complexity of the bone marrow microenvironment.

Studies of the niche have now more precisely determined the components that regulate HSCs, and to some extent other haematopoietic progenitors, in the bone marrow. Like any interactive system there are complex regulatory relationships among cells in the bone marrow. A perturbation in one cell type that leads to an effect in another cell type does not necessarily require the interaction between the cells to be direct. The data now suggest that the early studies that observed effects on HSC frequency as a consequence of genetic manipulation in osteoblastic cells reflected indirect effects rather than the existence of an osteoblastic niche. Indeed, expression of constitutively active parathyroid hormone receptors in osteoblasts¹⁴ probably causes widespread changes in many cell types of the bone marrow, including in the vasculature. Current data suggest

¹Howard Hughes Medical Institute, Children's Research Institute, Department of Pediatrics, University of Texas Southwestern Medical Center, Dallas, Texas 75390, USA. ²Center for Regenerative Medicine, Massachusetts General Hospital, Harvard Stem Cell Institute and the Department of Stem Cell and Regenerative Biology, Harvard University, Cambridge, Massachusetts 02138, USA.

there are specialized niches for distinct types of haematopoietic stem and progenitor cells, and that each niche may be created by multiple cell types that contribute to the niches in unique as well as redundant ways¹⁷. Indeed, there is heterogeneity among HSCs themselves^{18–20}, raising the possibility of cellularly distinct niches for distinct subpopulations of HSCs. This Review focuses on the current data and the unanswered questions.

Mapping the bone marrow space

A niche is defined by anatomy and function²¹ — a local tissue microenvironment that directly maintains and regulates a particular kind of stem cell or progenitor²². Determining what cells neighbour HSCs and regulate HSC maintenance has been complicated by the difficulty in retaining histological integrity when sectioning bone, as well as the complexity of immunostaining methods that are necessary to identify HSCs.

The identification of markers that reliably identify HSCs *in vivo* was an important step in defining the niche²². Despite having the ability to isolate HSCs by flow cytometry for decades²³, identifying HSCs within tissues has remained a challenge because the combination of immunofluorescent markers used to isolate HSCs by flow cytometry was too complex for microscopy. Consequently, markers of poor specificity were often used. For example, putative HSCs have been localized in the bone marrow using retention labels 5-bromodeoxyuridine (BrdU) or GFP-labelled histone H2B (H2B–GFP) as markers^{24,25}. Although there is a subset of HSCs that

preferentially retains H2B–GFP and BrdU, these markers by themselves have very poor specificity — most bone marrow cells that retain these labels are not HSCs^{18,19,26}.

When positive staining for CD150 was combined with negative staining for CD48 and CD41, HSCs could finally be highly purified using a simple two-colour stain²⁷. All serially transplantable HSCs in young adult mice are contained within the CD150⁺CD48[–]CD41[–]/CD41^{low} population of bone marrow cells, including the most quiescent HSCs^{26–29}. This made it possible to localize HSCs in sections through haematopoietic tissues using markers validated to give high purity. Most CD150⁺CD48[–]CD41[–] lineage[–] cells in the bone marrow and spleen localize adjacent to sinusoid vessels, and nearly all are within five cell diameters of a sinusoid^{27,30} (Fig. 2). HSCs are five times more likely than other haematopoietic cells to be immediately adjacent to a sinusoid³⁰. HSCs are distributed throughout the bone marrow, with less than 20% within 10 μ m of the endosteum^{27,30–32}. Nonetheless, most HSCs are found in the trabecular region of bone marrow, suggesting that HSCs, or their niche, may be directly or indirectly regulated by factors present near bone surfaces.

The frequent localization of HSCs adjacent to blood vessels suggested that HSCs might be maintained in a perivascular niche by endothelial or perivascular cells^{27,33}. But HSCs are mobile, regularly entering and exiting circulation³⁴. This raised the possibility that the cells observed near vessels were in transit, perhaps delayed from entering or exiting circulation by

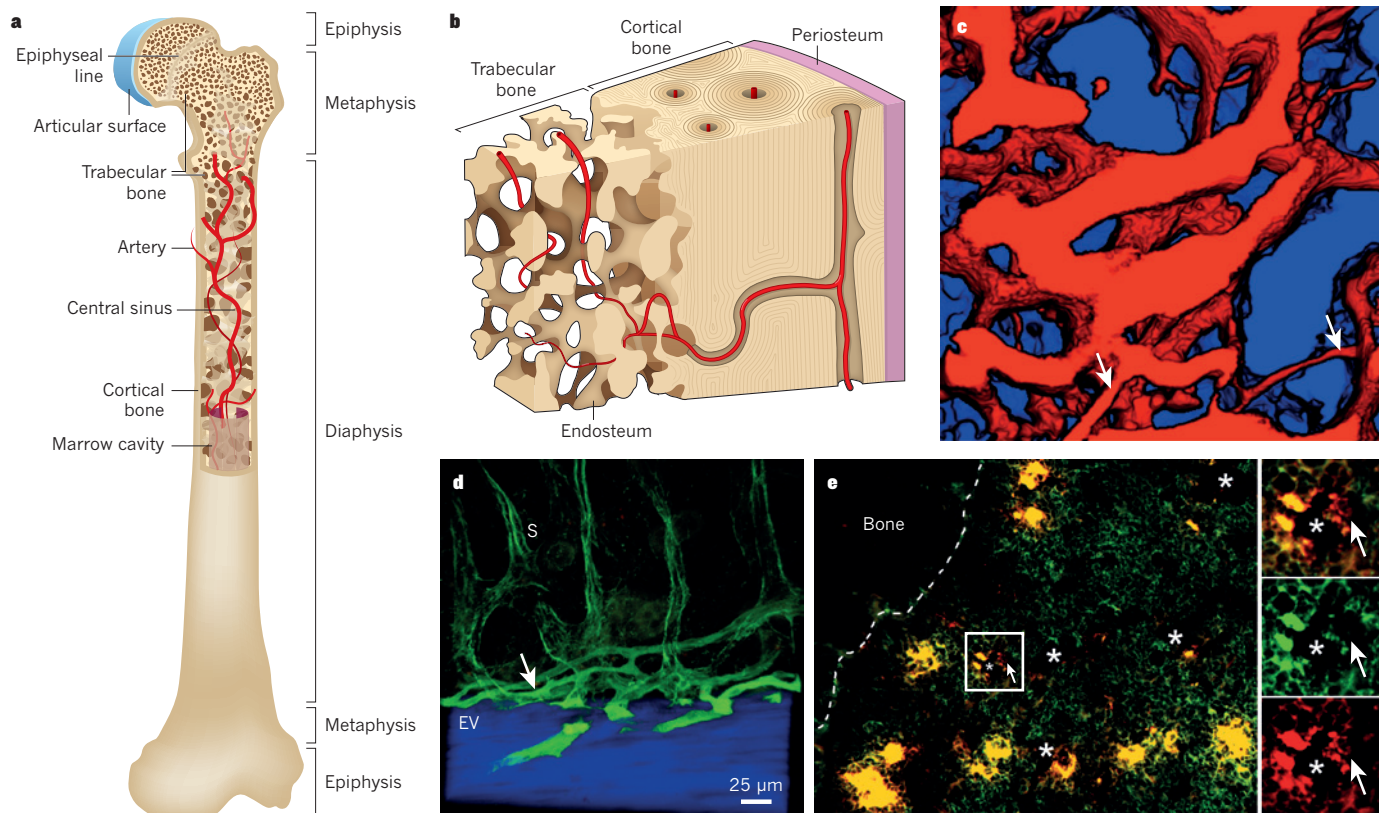


Figure 1 | Bone marrow anatomy. Haematopoietic stem cells (HSCs) reside mainly within bone marrow during adulthood. Bone marrow is a complex organ, containing many different haematopoietic and non-haematopoietic cell types, that is surrounded by a shell of vascularized and innervated bone. **a**, Minute projections of bone (trabeculae) are found throughout the metaphysis such that many cells in this region are close to the bone surface. **b**, The interface of bone and bone marrow is known as the endosteum, which is covered by bone-lining cells that include bone-forming osteoblasts and bone-resorbing osteoclasts. Arteries carry oxygen, nutrients and growth factors into the bone marrow, before feeding into sinusoids, which coalesce as a central sinus to form the venous circulation. Sinusoids are specialized venules that form a reticular network of fenestrated vessels that allow cells to pass in and out of circulation. There is a particularly rich supply of arterioles, as well as sinusoids, near the

endosteum. **c**, Three-dimensional reconstructed photomicrograph from the bone marrow towards the endosteal surface (blue) from 50 μ m below the surface, revealing the rich network of vessels (red) (image courtesy of C. Lin, J. Spencer and J. Wu). Smaller arteriolar vessels (white arrows) become larger sinusoidal vessels. The field of view is 350 μ m \times 350 μ m. **d**, A cross-sectional view of blood vessels that run along the endosteal surface (EV) and that transition (white arrow) into sinusoids (S). **e**, The bone marrow is cellularly complex with CD150⁺CD48[–]CD41[–] lineage[–] HSCs (arrow) residing in close contact not only with vascular and perivascular cells (*, sinusoid lumens) but also megakaryocytes (large yellow cells) and other haematopoietic cells (image adapted with permission from ref. 125). In the enlargement on the right, CD150 is shown in red and CD48, CD41 and lineage are shown in green.

migrating through vascular barriers. This issue could not be resolved by histological analysis that captures a single moment in time.

The sequential high-resolution imaging of mice assessed the three-dimensional position of cells in the calvarium over time^{32,35}. These studies indicated that primitive haematopoietic cells trafficked to specific microdomains of bone marrow blood vessels where the key HSC localization chemokine CXCL12 and the glycoprotein E-selectin were abundant, then remained in these positions for weeks, generating new cells as indicated by the partitioning of a cytosolic dye. When HSCs were visualized after transplantation into irradiated mice they preferentially localized near the endosteum, consistent with that region being particularly relevant for HSC maintenance^{32,36}. However, it was subsequently found that irradiation disrupts sinusoids in the bone marrow³⁷, raising the possibility that the only blood vessels preserved after irradiation are the arteriolar vessels near the endosteum. Therefore, the peri-endosteal localization of HSCs in these experiments may have reflected, in part, the destruction of sinusoidal niches by irradiation. Overall, the localization data emphasized the possibility of a perivascular niche. How could this be resolved with historical data suggesting that the endosteum and osteoblasts were niche participants?

Osteoblasts are more harbingers than hosts

Although osteoblastic cells were the first cell population shown to influence haematopoietic stem or progenitor cell frequency when perturbed *in vivo*^{14,16}, several lines of evidence raised concerns that the effect may not be direct. First, *in vivo* imaging studies using validated markers or labelled stem cells found few HSCs in contact with osteoblastic cells^{27,31,32,33,38}. Second, studies that depleted osteoblasts by *Bgn* deficiency³⁰ or osteoblastic cells by treatment with ganciclovir^{39,40} or that increased osteoblasts by

strontium treatment⁴¹ had no acute effect on HSC frequency. The studies in which osteoblastic cells were conditionally deleted by ganciclovir showed acute depletion of B lymphoid progenitors and only later showed a decline in a stem/progenitor cell population^{39,40}. Third, genetic modification of primitive osteolineage cells had an effect on HSC proliferation and differentiation, but the same modification in mature osteoblasts did not⁴². Finally, a key adhesion molecule thought to mediate osteoblast–HSC interaction, N-cadherin, was called into question.

N-cadherin⁺ HSCs were proposed to adhere to N-cadherin⁺ osteoblasts by homophilic adhesion^{16,36}, promoting HSC maintenance^{43–45}; however, these studies did not test whether deletion of the gene that encodes N-cadherin (*Cdh2*) affected HSC function. The levels of N-cadherin staining in HSCs were difficult to distinguish from background fluorescence and depended on anti-N-cadherin antibodies that gave nonspecific staining in some haematopoietic cells⁴⁶. Other studies failed to detect N-cadherin expression by HSCs using gene expression profiling^{27,47,48} (<https://gex.stanford.edu/model/3/gene/Cdh2>) quantitative reverse-transcription-PCR, flow cytometry with multiple anti-N-cadherin antibodies, western blot, or *Cdh2:LacZ* genetrap mice^{18,28,30,38}. Conditional deletion of *Cdh2* from HSCs or from osteoblast lineage cells had no effect on HSC frequency, HSC function or haematopoiesis^{38,49,50}. Collectively, these data undermined the notion of an N-cadherin⁺ ‘osteoblastic’ niche.

Is there any role for osteoblasts or osteolineage cells in HSC regulation? Several lines of evidence suggest that this possibility remains viable but not as it was initially foreseen. First, higher numbers of HSCs reside in the trabecular rich metaphysis^{31,51}. This may simply reflect other components of bone marrow co-localizing with bony surfaces; however, conditional deletion of *Sp7* (*Osterix*) results in chondrocytes without osteoblastic differentiation, increasing blood vessels and mesenchymal progenitors in the

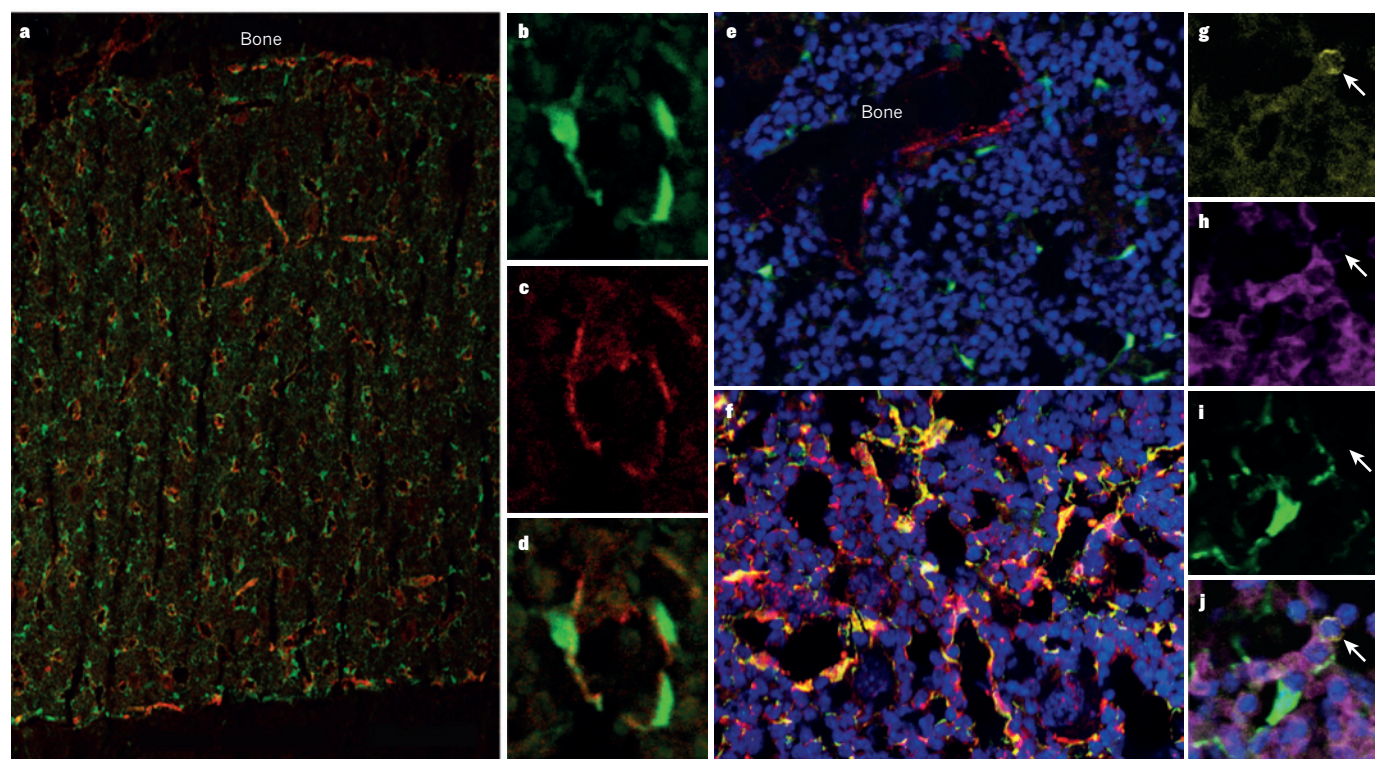


Figure 2 | Haematopoietic stem cells and their niche cells surround sinusoids throughout the bone marrow. **a**, Sections through the bone marrow of mice in which GFP had been knocked in to the *Scf* locus show that Scf-expressing cells (green) include mesenchymal stromal cells and endothelial cells that surround sinusoids and potentially other blood vessels throughout the bone marrow⁶⁴. High magnification shows that **b**, *Scf*-GFP expression overlaps with **c**, the endothelial marker endoglin (shown by **d**, a merge of the two) but also extends beyond the endoglin on the abluminal side of the sinusoids, indicating expression by mesenchymal stromal cells. **e**, *Scf*-GFP (green) is not

expressed by osteopontin⁺ bone-lining cells (red) around trabecular bone, but it is expressed by some nearby perivascular cells. **f**, *Cxcl12*-DsRed (red) exhibits a similar expression pattern, primarily by perivascular mesenchymal cells and endothelial cells around sinusoids throughout the bone marrow, in a pattern that strongly overlaps with *Scf*-GFP (green) in mice with *DsRed* knocked into the *Cxcl12* locus and GFP knocked into the *Scf* locus¹⁷. Cells that are **(g)** CD150⁺ and **(h)** CD48⁺ and lineage[−] are usually found immediately adjacent to **(i)** *Scf*-GFP⁺ perivascular cells in the bone marrow. **j**, A merge of **g–i**. Images adapted with permission from refs 17 and 64.

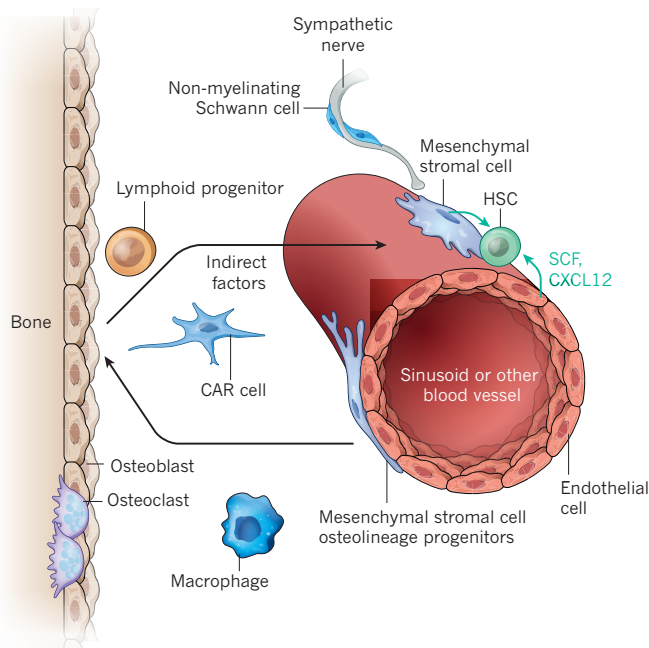


Figure 3 | Haematopoietic stem cells (HSCs) and restricted haematopoietic progenitors occupy distinct niches in the bone marrow. HSCs are found mainly adjacent to sinusoids throughout the bone marrow^{27,30,31,33}, where endothelial cells and mesenchymal stromal cells promote HSC maintenance by producing SCF⁶⁴, CXCL12 (refs 17, 33, 62) and probably other factors. Similar cells may also promote HSC maintenance around other types of blood vessels, such as arterioles. The mesenchymal stromal cells can be identified based on their expression of *Lepr*-Cre⁶⁴, *Prx1*-Cre⁶², *Cxcl12*-GFP³³ or *Nes*-GFP transgenes⁶³ in mice and similar cells are likely to be identified by CD146 expression in humans⁵⁴. Perivascular stromal cells, which probably include *Cxcl12*-abundant reticular (CAR) cells³³, are fated to form bone *in vivo*, express *Mx-1*-Cre and overlap with CD45/Ter119⁺PDGFR α ⁺Sca-1⁺ stromal cells that are highly enriched for mesenchymal stromal cells in culture⁶⁶. It is likely that other cells also contribute to this niche, these probably include cells near bone surfaces in trabecular-rich areas. Other cell types that regulate HSC niches include sympathetic nerves^{91,92}, non-myelinating Schwann cells (which are also *Nes*⁹⁶), macrophages⁹⁵ and osteoclasts⁹⁷. The extracellular matrix^{120,121} and calcium⁵⁶ also regulate HSCs. Osteoblasts do not directly promote HSC maintenance but do promote the maintenance and perhaps the differentiation of certain lymphoid progenitors by secreting CXCL12 and probably other factors^{13,17,39,40}. Early lymphoid restricted progenitors thus reside in an endosteal niche that is spatially and cellularly distinct from HSCs.

bone marrow but almost eliminating haematopoiesis in the metaphysis⁵². These data argue that the presence of mature or maturing osteolineage cells in regions with abundant endosteum is crucial for haematopoiesis. Indeed, mesenchymal progenitors that are capable of forming bone are sufficient to create bony ossicles that become invested by host vasculature and HSCs^{53,54}. This suggests that bone or bone-forming progenitors can promote the formation or maintenance of HSC niches (for example by recruiting vasculature to the bone marrow) even if they do not directly promote HSC maintenance.

Transplanted haematopoietic stem or progenitor cells preferentially localize to blood vessels in endosteal regions even without prior cytotoxic conditioning⁵⁵. Within the endosteal region, transplanted HSCs position themselves closer to the endosteal surface than progenitor cells³². These may again reflect indirect effects of bone-forming osteolineage cells as bone turnover results in high local concentrations of ionic calcium, and the calcium-sensing receptor promotes bone marrow engraftment by HSCs during development or after transplantation⁵⁶. Osteolineage cells also elaborate cytokines and extracellular matrix proteins that may influence a wide range of cell types, some of which may directly regulate HSC function. This is exemplified by parathyroid hormone receptor activation, which induces expression of multiple regulatory molecules (such as IL-6, RANKL and Jagged1) by osteoblasts that can influence other cells

in the bone marrow, including the vasculature^{14,57}. In addition, osteoblastic expression of transgenes encoding the Wnt antagonists *Dkk1* and *Wif1* depletes HSCs^{58,59}. Finally, the depletion of osteocalcin-expressing cells (osteoblasts or osteocytes) *in vivo* results in an inability to mobilize at least short-term repopulating cells to the blood using granulocyte colony-stimulating factor^{60,61} despite osteoblasts having little expression of CXCL12 (refs 17, 33, 62). In aggregate, these data indicate that the endosteal region is important for haematopoiesis, but the mature osteolineage cells probably have an indirect role in modulating HSCs. However, these cells seem to be more important in directly regulating restricted progenitors, a topic discussed later. It is important, therefore, to refocus attention on the endosteum as a regulatory region and not on the osteoblasts themselves (Fig. 3).

The endosteum has a diverse group of cells and anatomical elements, including a rich endowment of arteriolar and sinusoidal blood vessels^{31,32} (Fig. 1). The cells include endothelial cells as well as mesenchymal cells with osteolineage potential. These mesenchymal cells reside perivascularly but traffic to the endosteal surface to differentiate into osteoblasts. Undifferentiated mesenchymal cells around blood vessels may promote HSC maintenance throughout the bone marrow, but the mesenchymal cells around vessels in the endosteal region may differ from those distant from endosteal surfaces.

Perivascular regulators of HSCs

Given the localization of HSCs near blood vessels, it was crucial to define the stromal cells surrounding the vessels and to test whether they promote HSC maintenance. Attention focused on the mesenchymal cells that surround blood vessels throughout the bone marrow. Although mesenchymal stroma are likely to be heterogeneous, and the precise relationships between cells expressing various markers remain to be defined, perivascular mesenchymal cells that express CD146 in humans⁵⁴ and *Cxcl12*-GFP³³, *Nes*-GFP⁶³, full length *Lepr*-Cre⁶⁴, *Prx-1*-Cre⁶², *Sp7*-Cre⁶² and inducible *Mx-1*-Cre¹⁵ mice all generate osteoblastic cells and all express factors that promote HSC maintenance. CXCL12-abundant 'reticular' (CAR) cells adjacent to sinusoids were first shown to co-localize with HSCs throughout the bone marrow³³. Ablation of *Cxcl12*-expressing bone marrow cells depletes HSCs as well as severely impairing the adipogenic and osteogenic capacity of bone marrow cells⁶⁵. Human CD146⁺ skeletal stem cells also localize adjacent to sinusoids in the bone marrow and synthesize high levels of the HSC niche factors stem cell factor (SCF) and CXCL12 (ref. 54).

The possibility that mesenchymal stem or stromal cells (MSCs) are part of the HSC niche was further supported by the finding that MSCs in the bone marrow express a *Nes*-GFP transgene and localize around blood vessels throughout the bone marrow⁶³. HSCs commonly localize adjacent to *Nes*-GFP⁺ cells and these cells express high levels of SCF and CXCL12. Moreover, fibroblast activation protein (FAP) is expressed by bone marrow stromal cells that have many characteristics of MSCs, including CXCL12, SCF, PDGFR α and Sca-1 expression^{66,67}, and ablation of these FAP⁺ cells leads to bone marrow hypocellularity, anaemia and depletion of osteogenic cells^{68,69}. These studies provided strong evidence that MSCs are one component of a perivascular niche for HSCs.

Endothelial cells also contribute to the perivascular HSC niche²⁷. The earliest functional evidence supporting this possibility was the observation that conditional deletion of the gene that encodes the gp130 cytokine receptor in endothelial cells led to bone marrow hypocellularity and a reduction in HSC numbers⁷⁰. Inhibition of VEGFR2 signalling in irradiated mice using a blocking antibody impaired the regeneration of sinusoidal endothelial cells and prevented the recovery of LSK stem or progenitor cells as well as CFU-S cells³⁷. Endothelial cells can promote HSC maintenance in culture⁷¹, and bone marrow sinusoidal endothelial cells promote long-term reconstituting HSC expansion in culture^{72,73}. It has been suggested that E-selectin is exclusively expressed by endothelial cells in the bone marrow, and deficiency of the gene that encodes it renders HSCs more quiescent and resistant to irradiation⁷⁴. These studies suggested that endothelial cells are one component of the HSC niche, but did not address whether they directly or indirectly regulate HSC maintenance *in vivo*.

To formally identify the niche cells, researchers examined which cell populations were the key sources of factors that promote HSC maintenance *in vivo*. For example, SCF has a non-cell-autonomous role for HSC maintenance *in vivo*^{75–79}. Differential splicing and proteolytic cleavage yield membrane-bound and soluble forms of SCF. HSCs are depleted in *Sl/Sl^{fl}* mutant mice⁸⁰, which express soluble SCF but not the membrane-bound form, indicating that this form is necessary for HSC maintenance⁸¹. Importantly, mice with a mixture of wild-type and *Sl/Sl^{fl}* stromal cells only exhibit normal haematopoiesis in the immediate vicinity of the wild-type cells, demonstrating that SCF acts locally in creating the niche⁸². Because cell–cell contact is needed between HSCs and those that synthesize SCF, the niche could be localized by identifying the key sources of SCF for HSC maintenance.

Analysis of the *Scf* expression pattern in mice in which GFP is knocked in to the *Scf* locus revealed that *Scf* is expressed perivascularly, mainly around sinusoids throughout the bone marrow⁶⁴. *Lepr⁺* perivascular stromal cells expressed the highest levels of *Scf* and endothelial cells expressed lower levels. Gene expression profiling suggested that these *Lepr*-expressing perivascular cells were mesenchymal. *Scf*-GFP expression could not be detected in osteoblasts or in haematopoietic cells. Conditional deletion of *Scf* from perivascular stromal cells (*Lepr*-Cre) or endothelial cells (*Tie2*-Cre) depleted HSCs⁶⁴. However, deletion of *Scf* from haematopoietic cells (*Vav1*-Cre), osteoblastic cells (*Col2.3*-Cre) and Nestin-expressing perivascular stromal cells (*Nes*-Cre and *Nes*-CreER) did not affect HSC frequency⁶⁴. These results proved there is a perivascular niche for HSCs in which endothelial cells and mesenchymal cells promote HSC maintenance by synthesizing SCF (Fig. 3).

It has been proposed that the endosteal region and its osteoblastic cells provide a unique zone for the maintenance of quiescent HSCs. However, when *Scf* was conditionally deleted from both endothelial cells and perivascular mesenchymal cells in *Lepr-cre*, *Tie2-cre*, *Scf^{fl/fl}* mice, 85% of all long-term multilineage reconstituting cells, including all serially transplantable HSCs and all HSCs in the most quiescent subpopulation, were eliminated²⁰. Therefore, even the most primitive and quiescent HSCs are maintained by a perivascular niche. Whether there are functionally distinct perivascular niches in different regions of the bone marrow, such as in the endosteal region, remains an open question.

Are other key niche factors also synthesized primarily by perivascular cells? *Cxcl12* is a chemokine that is required for HSC maintenance and HSC retention in the bone marrow^{33,83–86}. Global deletion of *Cxcl12*, or the gene that encodes the *Cxcl12* receptor, *Cxcr4*, depletes HSCs from the bone marrow^{33,83,87}. *Cxcl12* is primarily expressed by perivascular mesenchymal stromal cells (CAR cells, *Nes*-GFP, *Lepr*-Cre or *Prx1*-Cre expressing cells), with 100-fold lower levels of expression in endothelial cells and 1,000-fold lower levels in osteoblasts^{17,33,62,88,89}. Conditional deletion of *Cxcl12* from perivascular mesenchymal cells using *Prx1*-Cre and *Lepr*-Cre depleted and mobilized HSCs, respectively^{17,62}. HSCs were depleted but not mobilized when *Cxcl12* was conditionally deleted from endothelial cells (*Tie2*-Cre)^{17,62}. HSC frequency and bone marrow retention were not affected when *Cxcl12* was conditionally deleted from osteoblasts or their progenitors (*Col2.3*-Cre and *Sp7*-Cre), haematopoietic cells (*Vav1*-Cre), or *Nes*-Cre-expressing stromal cells^{17,62}. These data confirmed that HSCs reside in a perivascular niche in which mesenchymal stromal cells and endothelial cells each synthesize multiple factors that promote HSC maintenance and localization.

Although conditional deletion of *Scf* and *Cxcl12* with *Nes*-Cre and *Nes*-CreER did not have any effect on HSC frequency^{17,64}, *Nes*-GFP⁺ perivascular cells are almost certainly part of the HSC niche⁶³. Each of these *Nes* alleles are transgenes with different expression patterns in the bone marrow⁶⁴. *Nes*-Cre seems not to be expressed in the bone marrow and *Nes*-CreER exhibits very limited perivascular expression that does not resemble the expression patterns of *Scf*-GFP, *Cxcl12*-DsRed, *Nes*-GFP or *Nes*-Cherry⁶⁴. However, *Nes*-GFP expression strongly overlaps with *Lepr*-Cre expression by perivascular cells throughout the bone marrow^{64,67,90}. Thus, it is likely that *Nes*-GFP⁺ perivascular MSCs are a component of the HSC niche even though *Nes*-Cre mediated deletion of *Scf* or *Cxcl12* did

not deplete HSCs. Going forward, it will be useful to identify other Cre alleles that are specifically expressed in *Nes*-GFP⁺ cells to compare their function with other perivascular stromal cells.

Complexity of the perivascular HSC niche

Endothelial cells and mesenchymal stromal cells are not the only cell types that regulate the perivascular HSC niche (Fig. 3). The sympathetic nervous system regulates *CXCL12* expression and HSC retention in the bone marrow^{91,92}. This seems to be accomplished by sympathetic nerve fibres that likely synapse on perivascular cells around a subset of blood vessels in the bone marrow, conferring circadian regulation of *CXCL12* expression and HSC mobilization. Circadian oscillation in the clearance of aged neutrophils by macrophages in the bone marrow also contributes to these circadian changes in *CXCL12* expression and HSC circulation⁹³. Consistent with this, macrophages modulate *Cxcl12* expression by *Nes*-GFP⁺ cells and HSC retention in the bone marrow^{94,95}. Non-myelinating Schwann cells seem to regulate the niche by regulating TGF- β activation and potentially by secreting other factors⁹⁶. Osteoclasts, or osteoclast activity at the endosteum, may also influence HSC maintenance and bone marrow retention^{56,97,98}. Many different cell types are likely to directly or indirectly regulate the perivascular HSC niche.

Given the complexity of cell types implicated in the regulation of HSCs, there is no singular niche cell. Rather, the niche integrates the function of multiple participants. It is important to bear in mind that niche composition and niche function may change under different physiological conditions or in response to stress. It is also important to note that many of the Cre recombinase alleles used so far to study niche cells were active during development. Although this was necessary to achieve efficient gene deletion (temporally regulated CreER alleles tend to give much lower levels of recombination) and no abnormalities in development were noted, indirect effects on surrounding cell types and compensatory changes cannot be excluded. Even though endothelial cells and perivascular mesenchymal cells express SCF and *CXCL12*, conditional deletion of these factors from these cell types may have direct and indirect effects on HSCs.

There may also be long-range signals circulating through the blood that regulate HSC or niche function, perhaps integrating stem-cell activity with overall physiology⁹⁹. These may include hormones that signal reproductive or nutritional status, or even haematopoietic cytokines. For example, thrombopoietin is required for HSC maintenance^{100–103}. The main sites of thrombopoietin synthesis are in the liver and kidney, although it is also synthesized at lower levels by bone marrow stroma^{104,105}. Conditional deletion experiments will be required to determine the physiologically important source or sources of thrombopoietin for HSC maintenance.

There may also be functionally distinct perivascular environments in the bone marrow based on vessel type. Most studies of perivascular niches in the bone marrow have focused on sinusoids because they are the most abundant blood vessels in the bone marrow and most HSCs, *Scf*-expressing cells and *Cxcl12*-expressing cells are in close proximity to them^{17,27,33,54,64}. However, other types of blood vessel, such as arterioles, may have an important role in HSC maintenance. A recent study reported that NG2⁺, but *Lepr*[−], mesenchymal cells that surround arterioles in the bone marrow are important for the maintenance of quiescent HSCs¹⁰⁶. This conclusion was based on the observation that HSCs were depleted and driven into cycle when NG2-CreER⁺ cells were ablated by treatment with diphtheria toxin. However, these data seem to conflict with the earlier observation that quiescent HSCs are eliminated from the bone marrow when *Scf* is conditionally deleted using *Tie2*-Cre and *Lepr*-Cre, which recombine in endothelial cells and mesenchymal cells that are primarily around sinusoids throughout the bone marrow²⁰. It will thus be interesting to determine whether HSCs are depleted when *Scf* is conditionally deleted using NG2-CreER or whether NG2-CreER is expressed by cells other than periaarteriolar cells in the bone marrow. Similarly, it will be important to assess whether *Lepr*-expressing perivascular cells contribute to arteriolar niches in the bone marrow. In the end, perivascular niches associated with both sinusoids and arterioles may regulate HSC maintenance and quiescence in the bone marrow. Dissecting the diversity in perivascular

environments will require Cre alleles that are specifically expressed within distinct perivascular domains to map their functions.

Evidence of HSCs residing within relatively hypoxic domains within the bone marrow^{31,107} has partly been based on staining with pimonidazole³¹. Stained HSCs often reside adjacent to sinusoids in the bone marrow and are found next to cells that do not stain with pimonidazole³¹. This suggests that pimonidazole staining does not reflect ambient oxygen or that it is cell-autonomously determined, rather than reflecting a hypoxic environment. Pimonidazole responds to reducing intermediates and may reflect more about the metabolic state of cells than ambient oxygen levels.

Some researchers have interpreted the dependence of HSC maintenance on HIF-1 α as suggestive of a hypoxic niche¹⁰⁸. However, a number of factors other than hypoxia regulate HIF-1 α expression. A recent imaging study using a nanoprobe specifically reflective of ambient oxygen found that oxygen tension was lowest around sinusoids and highest near the endosteum¹⁰⁹. The entire bone marrow space had much lower levels of oxygen compared with vessels entering the bone marrow, a feature that was largely lost when haematopoiesis was ablated by cytotoxic drugs. It is therefore likely that consumption of oxygen during haematopoiesis renders the marrow hypoxic but that no distinct hypoxic region exists at the endosteum.

Distinct haematopoietic progenitors have distinct niches

HSCs reside within a specialized niche that is distinct from the niches that nurture other haematopoietic progenitors. For example, although osteolineage cells do not directly regulate HSC maintenance, they do regulate some B-cell lineage progenitors. Cultures enriched for osteoblasts support B lymphopoiesis and ablation of osteoblastic cells in adult mice acutely depletes some B lymphoid progenitors^{40,110}. Deletion of G α in osteoblastic cells, which is necessary for parathyroid hormone receptor signalling, markedly depleted pro- and pre-B cells in a way that could be mitigated with IL-7 (ref. 111). About 30% of IL7R⁺ lineage⁻ bone marrow cells, which are enriched for early lymphoid progenitors, localize immediately adjacent to bone-lining cells at the endosteum¹⁷. Conditional deletion of CXCL12, a factor that promotes the proliferation and maintenance of B-lineage progenitors^{84,112} and common lymphoid progenitors (CLPs)¹¹³, in osteoblastic cells depleted CLPs and certain other early lymphoid progenitors from the bone marrow without any effect on HSCs¹⁷. Therefore, some early lymphoid progenitors depend on an osteoblastic niche that is cellularly and functionally distinct from the perivascular niche that maintains HSCs.

Other lineage-restricted niches may also exist. For example, macrophages seem to be crucial for erythroid maturation, and macrophage depletion reduces normal and malignant erythropoiesis¹¹⁴. Other cellular components of the erythropoiesis niche will have to be identified to understand the relationship between this niche and HSC and lymphoid progenitor niches.

The approach of conditionally deleting specific niche factors from candidate niche cells and then examining the consequences for stem or progenitor cell maintenance *in vivo* offers the opportunity to map the niches for each stem cell and restricted progenitor in the haematopoietic system, limited only by the precision of the Cre alleles that are available.

Novel niche factors

In contrast to stem cells in some tissues, HSCs cannot be sustainably expanded in culture. This has impeded our ability to safely and effectively transplant HSCs in certain clinical contexts, such as during gene therapy, in which it would be useful to expand transduced HSCs in culture and verify the quality of the transduced HSCs before transplantation. One possibility why HSCs cannot be expanded in culture is the existence of, so far, unidentified growth factors that are synthesized by the niche *in vivo*.

Some HSC niche factors have only recently been discovered. The addition of pleiotrophin to culture promotes HSC maintenance¹¹⁵ and *Ptn* deficiency is associated with HSC depletion and impaired haematopoietic regeneration after myelosuppression¹¹⁶. Pleiotrophin is synthesized by sinusoidal endothelial cells and *Cxcl12*-expressing perivascular stromal

cells, and has a non-cell-autonomous role in promoting HSC function¹¹⁶. The Slit receptor Robo4, which is expressed by HSCs and endothelial cells, regulates HSC localization in the bone marrow^{117,118}. The *Slit2* ligand is restricted to MSCs and possibly other osteoblast lineage cells. This suggests that pleiotrophin and Robo4–Slit2 are important elements of the perivascular niche. The glycoprotein tenascin-C¹¹⁹, osteopontin^{120,121} and non-canonical Wnts²⁵ have also been reported to positively or negatively influence HSC numbers in the bone marrow and are among a number of factors that bear further characterization in terms of cellular source or role with respect to the niche.

Perspective

Ten years of experimentation has validated the niche concept and answered some first order questions about the molecular and cellular nature of the HSC niche in the bone marrow. The ‘parts’ list that make up this niche remains incomplete, but with the pace of current work it is likely that additional components will be defined and ambiguity about overlapping cell populations resolved over the next few years. This will make it possible to compare anatomically and developmentally distinct HSC niches that have different functions. The number of HSCs expands daily within the fetal liver but is sustained at nearly constant levels in the bone marrow, at least in the absence of injury. How components of these niches compare may inform methods for achieving HSC expansion. Similarly, comparing homologous niches among species, such as long-lived humans with short-lived mice, may provide insight into mechanisms for preserving the integrity of haematopoiesis under stress or in response to ageing. Finally, comparing niches among tissues will assess whether the mesenchymal and endothelial populations in brain, gut and skin share characteristics and functions with those defined in the bone marrow. Do diverse adult tissues consistently have perivascular niches for stem-cell maintenance? Do regenerative tissues have niches with common mechanisms for preserving self-renewal? Are there common components that can be engineered into niches *ex vivo*?

With the detail now emerging in our understanding of the bone marrow niche, a number of second order questions can be addressed. Increasingly, niche cells can be genetically tagged or modified, allowing both quantification and molecular manipulation. Coupled with high resolution real-time imaging and well-validated methods to measure haematopoiesis, it is becoming possible to systematically elucidate how the niche responds to stresses or physiological changes to mediate changes at the stem-cell and tissue levels. When stressed by infection, myeloablation or neoplasia, what niche components change in number or function to modify haematopoiesis? Is there a hierarchy of niche components that determine these responses? Can such information allow predictive algorithms that guide specific interventions to achieve desired outcomes?

Another set of questions concerns the manner in which the niche participates in diseases of stem-cell failure, such as aplastic anaemia or neoplasia. The niche may be hostile to normal progenitors in those disease states and, with neoplasia, undergo a facultative response to support altered haematopoiesis¹²². Can changes in the niche be a primary but non-cell-autonomous driver of neoplasia in humans as has been suggested by animal models^{42,123,124}? The potential for unravelling how the microenvironment participates in normal and disease physiology is at hand and promises new approaches to haematological disorders. ■

Received 16 August; accepted 5 November 2013.

1. Mikkola, H. K. & Orkin, S. H. The journey of developing hematopoietic stem cells. *Development* **133**, 3733–3744 (2006).
2. Haeckel, E. H. P. A. *Generelle Morphologie der Organismen: allgemeine Grundzüge der organischen Formen-Wissenschaft, mechanisch begründet durch die von C. Darwin reformirte Decendenz-Theorie*. (1866).
3. Haeckel, E. *The Riddle of the Universe* (Die Weltraetsel, 1895–1899). 1992 Reprint Edition edn, (Prometheus, 1901).
4. Pappenheim, A. Ueber Entwicklung und Ausbildung der Erythroblasten. *Virchows Arch.* **145**, 587–643 (1896).
5. Till, J. E. & McCulloch, E. A direct measurement of the radiation sensitivity of normal mouse bone marrow cells. *Radiat. Res.* **14**, 213–222 (1961).
6. Simionovitch, L., McCulloch, E. A. & Till, J. E. The distribution of colony-forming

- cells among spleen colonies. *J. Cell. Physiol.* **62**, 327–336 (1963).
7. Simionovitch, L., Till, J. E. & McCulloch, E. A. Decline in colony-forming ability of marrow cells subjected to serial transplantation into irradiated mice. *J. Cell. Physiol.* **64**, 23–31 (1964).
8. Jones, R. J. et al. Characterization of mouse lymphohematopoietic stem cells lacking spleen colony-forming activity. *Blood* **88**, 487–491 (1996).
9. Spangrude, G. J., Brooks, D. M. & Tumas, D. B. Long-term repopulation of irradiated mice with limiting numbers of purified hematopoietic stem cells: *in vivo* expansion of stem cell phenotype but not function. *Blood* **85**, 1006–1016 (1995).
10. Schofield, R. The relationship between the spleen colony-forming cell and the haematopoietic stem cell. *Blood Cells* **4**, 7–25 (1978).
This article describes the niche hypothesis.
11. Dexter, T. M., Allen, T. D. & Lajtha, L. G. Conditions controlling the proliferation of hemopoietic stem cells *in vitro*. *J. Cell. Physiol.* **91**, 335–344 (1977).
12. Lord, B. I., Testa, N. G. & Hendry, J. H. The relative spatial distributions of CFUs and CFUc in the normal mouse femur. *Blood* **46**, 65–72 (1975).
13. Taichman, R. S. & Emerson, S. G. Human osteoblasts support hematopoiesis through the production of granulocyte colony-stimulating factor. *J. Exp. Med.* **179**, 1677–1682 (1994).
14. Calvi, L. M. et al. Osteoblastic cells regulate the haematopoietic stem cell niche. *Nature* **425**, 841–846 (2003).
In this paper, researchers identified heterologous cells influencing stem/progenitor cells in mammals, providing experimental evidence for the niche hypothesis.
15. Park, D. et al. Endogenous bone marrow MSCs are dynamic, fate-restricted participants in bone maintenance and regeneration. *Cell Stem Cell* **10**, 259–272 (2012).
16. Zhang, J. et al. Identification of the haematopoietic stem cell niche and control of the niche size. *Nature* **425**, 836–841 (2003).
This study identified heterologous cells that influence stem or progenitor cells in mammals, providing experimental evidence for the niche hypothesis.
17. Ding, L. & Morrison, S. J. Haematopoietic stem cells and early lymphoid progenitors occupy distinct bone marrow niches. *Nature* **495**, 231–235 (2013).
Systematic analysis of CXCL12-expressing cells in the bone marrow demonstrating that stem cells and restricted progenitors depend on cellularly distinct niches.
18. Foudi, A. et al. Analysis of histone 2B-GFP retention reveals slowly cycling hematopoietic stem cells. *Nature Biotechnol.* **27**, 84–90 (2009).
19. Wilson, A. et al. Hematopoietic stem cells reversibly switch from dormancy to self-renewal during homeostasis and repair. *Cell* **135**, 1118–1129 (2008).
20. Oguro, H., Ding, L. & Morrison, S. J. SLAM family markers resolve functionally distinct subpopulations of hematopoietic stem cells and multipotent progenitors. *Cell Stem Cell* **13**, 102–116 (2013).
21. Scadden, D. T. The stem-cell niche as an entity of action. *Nature* **441**, 1075–1079 (2006).
22. Morrison, S. J. & Spradling, A. C. Stem cells and niches: mechanisms that promote stem cell maintenance throughout life. *Cell* **132**, 598–611 (2008).
23. Spangrude, G. J., Heimfeld, S. & Weissman, I. L. Purification and characterization of mouse hematopoietic stem cells. *Science* **241**, 58–62 (1988).
24. Arai, F. et al. Tie2/angiopoietin-1 signaling regulates hematopoietic stem cell quiescence in the bone marrow niche. *Cell* **118**, 149–161 (2004).
25. Sugimura, R. et al. Noncanonical wnt signaling maintains hematopoietic stem cells in the niche. *Cell* **150**, 351–365 (2012).
26. Kiel, M. J. et al. Hematopoietic stem cells do not asymmetrically segregate chromosomes or retain BrdU. *Nature* **449**, 238–242 (2007).
27. Kiel, M. J., Yilmaz, O. H., Iwashita, T., Terhorst, C. & Morrison, S. J. SLAM family receptors distinguish hematopoietic stem and progenitor cells and reveal endothelial niches for stem cells. *Cell* **121**, 1109–1121 (2005).
This article provides a definition of an immunophenotypic signature for highly enriched stem cells that permitted histological mapping of HSCs within the bone marrow and suggested the existence of a perivascular niche.
28. Morita, Y., Erma, H. & Nakauchi, H. Heterogeneity and hierarchy within the most primitive hematopoietic stem cell compartment. *J. Exp. Med.* **207**, 1173–1182 (2010).
29. Yilmaz, O. H., Kiel, M. J. & Morrison, S. J. SLAM family markers are conserved among hematopoietic stem cells from old and reconstituted mice and markedly increase their purity. *Blood* **107**, 924–930 (2006).
30. Kiel, M. J., Radice, G. L. & Morrison, S. J. Lack of evidence that hematopoietic stem cells depend on N-cadherin-mediated adhesion to osteoblasts for their maintenance. *Cell Stem Cell* **1**, 204–217 (2007).
31. Nombela-Arrieta, C. et al. Quantitative imaging of haematopoietic stem and progenitor cell localization and hypoxic status in the bone marrow microenvironment. *Nature Cell Biol.* **15**, 533–543 (2013).
32. Lo Celso, C. et al. Live-animal tracking of individual haematopoietic stem/progenitor cells in their niche. *Nature* **457**, 92–96 (2009).
33. Sugiyama, T., Kohara, H., Noda, M. & Nagasawa, T. Maintenance of the hematopoietic stem cell pool by CXCL12–CXCR4 chemokine signaling in bone marrow stromal cell niches. *Immunity* **25**, 977–988 (2006).
This study identified a perivascular stromal cell that promoted HSC maintenance.
34. Wright, D. E., Wagers, A. J., Gulati, A. P., Johnson, F. L. & Weissman, I. L. Physiological migration of hematopoietic stem and progenitor cells. *Science* **294**, 1933–1936 (2001).
35. Sipkins, D. A. et al. *In vivo* imaging of specialized bone marrow endothelial microdomains for tumour engraftment. *Nature* **435**, 969–973 (2005).
This paper reports evidence that subregions of the microvasculature express high levels of Cxcl12 where transplanted haematopoietic progenitors localize and increase in number.
36. Xie, Y. et al. Detection of functional haematopoietic stem cell niche using real-time imaging. *Nature* **457**, 97–101 (2009).
37. Hooper, A. T. et al. Engraftment and reconstitution of hematopoiesis is dependent on VEGFR2-mediated regeneration of sinusoidal endothelial cells. *Cell Stem Cell* **4**, 263–274 (2009).
The authors of this study found that sinusoidal endothelial cells have specialized features and are necessary for HSC engraftment.
38. Kiel, M. J., Acar, M., Radice, G. L. & Morrison, S. J. Hematopoietic stem cells do not depend on N-cadherin to regulate their maintenance. *Cell Stem Cell* **4**, 170–179 (2009).
39. Vrsnjic, D. et al. Hematopoiesis is severely altered in mice with an induced osteoblast deficiency. *Blood* **103**, 3258–3264 (2004).
40. Zhu, J. et al. Osteoblasts support B lymphocyte commitment and differentiation from hematopoietic stem cells. *Blood* **109**, 3706–3712 (2007).
41. Lymperi, S. et al. Strontium can increase some osteoblasts without increasing hematopoietic stem cells. *Blood* **111**, 1173–1181 (2008).
42. Raaijmakers, M. H. et al. Bone progenitor dysfunction induces myelodysplasia and secondary leukaemia. *Nature* **464**, 852–857 (2010).
This article demonstrates that perturbing specific mesenchymal populations in the bone marrow can result in pathological haematopoietic outcomes, including neoplasia.
43. Hosokawa, K. et al. Knockdown of N-cadherin suppresses the long-term engraftment of hematopoietic stem cells. *Blood* **116**, 554–563 (2010).
44. Hosokawa, K. et al. Cadherin-based adhesion is a potential target for niche manipulation to protect hematopoietic stem cells in adult bone marrow. *Cell Stem Cell* **6**, 194–198 (2010).
45. Wilson, A. et al. c-Myc controls the balance between hematopoietic stem cell self-renewal and differentiation. *Genes Dev.* **18**, 2747–2763 (2004).
46. Li, P. & Zon, L. I. Resolving the controversy about N-cadherin and hematopoietic stem cells. *Cell Stem Cell* **6**, 199–202 (2010).
47. Ivanova, N. B. et al. A stem cell molecular signature. *Science* **298**, 601–604 (2002).
48. Seita, J. et al. Gene expression commons: an open platform for absolute gene expression profiling. *PLoS ONE* **7**, e40321 (2012).
49. Greenbaum, A. M., Revollo, L. D., Woloszynek, J. R., Civitelli, R. & Link, D. C. N-cadherin in osteolineage cells is not required for maintenance of hematopoietic stem cells. *Blood* **120**, 295–302 (2012).
50. Bromberg, O. et al. Osteoblastic N-cadherin is not required for microenvironmental support and regulation of hematopoietic stem and progenitor cells. *Blood* **120**, 303–313 (2012).
51. Guezguez, B. et al. Regional localization within the bone marrow influences the functional capacity of human HSCs. *Cell Stem Cell* **13**, 175–189 (2013).
52. Zhou, X. et al. Multiple functions of Osterix are required for bone growth and homeostasis in postnatal mice. *Proc. Natl Acad. Sci. USA* **107**, 12919–12924 (2010).
53. Chan, C. K. et al. Endochondral ossification is required for hematopoietic stem-cell niche formation. *Nature* **457**, 490–494 (2009).
54. Sacchetti, B. et al. Self-renewing osteoprogenitors in bone marrow sinusoids can organize a hematopoietic microenvironment. *Cell* **131**, 324–336 (2007).
This article provides evidence for a mesenchymal skeletal stem cell that is capable of generating bone, secreting HSC niche factors and giving rise to bone marrow compartments that include HSC niches.
55. Ellis, S. L. et al. The relationship between bone, hemopoietic stem cells, and vasculature. *Blood* **118**, 1516–1524 (2011).
56. Adams, G. B. et al. Stem cell engraftment at the endosteal niche is specified by the calcium-sensing receptor. *Nature* **439**, 599–603 (2006).
57. Dai, J. C., He, P., Chen, X. & Greenfield, E. M. TNF α and PTH utilize distinct mechanisms to induce IL-6 and RANKL expression with markedly different kinetics. *Bone* **38**, 509–520 (2006).
58. Fleming, H. E. et al. Wnt signaling in the niche enforces hematopoietic stem cell quiescence and is necessary to preserve self-renewal *in vivo*. *Cell Stem Cell* **2**, 274–283 (2008).
59. Schaniel, C. et al. Wnt-inhibitory factor 1 dysregulation of the bone marrow niche exhausts hematopoietic stem cells. *Blood* **118**, 2420–2429 (2011).
60. Ferraro, F. et al. Diabetes impairs hematopoietic stem cell mobilization by altering niche function. *Sci. Transl. Med.* **3**, 104ra101 (2011).
61. Asada, N. et al. Matrix-embedded osteocytes regulate mobilization of hematopoietic stem/progenitor cells. *Cell Stem Cell* **12**, 737–747 (2013).
62. Greenbaum, A. et al. CXCL12 in early mesenchymal progenitors is required for hematopoietic stem-cell maintenance. *Nature* **495**, 227–230 (2013).
This paper is a systematic analysis of CXCL12-expressing cells in the bone marrow, demonstrating the specific role of primitive mesenchymal cells and endothelial cells in regulating HSC maintenance.
63. Méndez-Ferrer, S. et al. Mesenchymal and hematopoietic stem cells form a unique bone marrow niche. *Nature* **466**, 829–834 (2010).
This article reports that primitive mesenchymal cells residing perivascularly regulate HSC maintenance.
64. Ding, L., Saunders, T. L., Enikolopov, G. & Morrison, S. J. Endothelial and perivascular cells maintain haematopoietic stem cells. *Nature* **481**, 457–462 (2012).
This paper is a systematic analysis of KitL expression in the bone marrow, demonstrating the requirement for endothelial and leptin-receptor-expressing perivascular cells in regulating HSC maintenance.
65. Omatsu, Y. et al. The essential functions of adipo-osteogenic progenitors as the

- hematopoietic stem and progenitor cell niche. *Immunity* **33**, 387–399 (2010).
66. Morikawa, S. *et al.* Prospective identification, isolation, and systemic transplantation of multipotent mesenchymal stem cells in murine bone marrow. *J. Exp. Med.* **206**, 2483–2496 (2009).
 67. Pinho, S. *et al.* PDGFR α and CD51 mark human Nestin⁺ sphere-forming mesenchymal stem cells capable of hematopoietic progenitor cell expansion. *J. Exp. Med.* **210**, 1351–1367 (2013).
 68. Tran, E. *et al.* Immune targeting of fibroblast activation protein triggers recognition of multipotent bone marrow stromal cells and cachexia. *J. Exp. Med.* **210**, 1125–1135 (2013).
 69. Roberts, E. W. *et al.* Depletion of stromal cells expressing fibroblast activation protein- α from skeletal muscle and bone marrow results in cachexia and anemia. *J. Exp. Med.* **210**, 1137–1151 (2013).
 70. Yao, L., Yokota, T., Xia, L., Kincade, P. W. & McEver, R. P. Bone marrow dysfunction in mice lacking the cytokine receptor gp130 in endothelial cells. *Blood* **106**, 4093–4101 (2005).
 71. Li, W., Johnson, S. A., Shelley, W. C. & Yoder, M. C. Hematopoietic stem cell repopulating ability can be maintained *in vitro* by some primary endothelial cells. *Exp. Hematol.* **32**, 1226–1237 (2004).
 72. Butler, J. M. *et al.* Endothelial cells are essential for the self-renewal and repopulation of Notch-dependent hematopoietic stem cells. *Cell Stem Cell* **6**, 251–264 (2010).
 73. Kobayashi, H. *et al.* Angiocrine factors from Akt-activated endothelial cells balance self-renewal and differentiation of haematopoietic stem cells. *Nature Cell Biol.* **12**, 1046–1056 (2010).
 74. Winkler, I. G. *et al.* Vascular niche E-selectin regulates hematopoietic stem cell dormancy, self renewal and chemoresistance. *Nature Med.* **18**, 1651–1657 (2012).
 75. Broudy, V. C. Stem cell factor and hematopoiesis. *Blood* **90**, 1345–1364 (1997).
 76. Czechowicz, A., Kraft, D., Weissman, I. L. & Bhattacharya, D. Efficient transplantation via antibody-based clearance of hematopoietic stem cell niches. *Science* **318**, 1296–1299 (2007).
 77. Ogawa, M. *et al.* Expression and function of c-kit in hemopoietic progenitor cells. *J. Exp. Med.* **174**, 63–71 (1991).
 78. Russell, E. S. Hereditary anemias of the mouse: a review for geneticists. *Adv. Genet.* **20**, 357–459 (1979).
 79. Heissig, B. *et al.* Recruitment of stem and progenitor cells from the bone marrow niche requires MMP-9 mediated release of Kit-ligand. *Cell* **109**, 625–637 (2002).
 80. Barker, J. E. Sl/Sld hematopoietic progenitors are deficient *in situ*. *Exp. Hematol.* **22**, 174–177 (1994).
 81. Barker, J. E. Early transplantation to a normal microenvironment prevents the development of Steel hematopoietic stem cell defects. *Exp. Hematol.* **25**, 542–547 (1997).
 82. Wolf, N. S. Dissecting the hematopoietic microenvironment. III. Evidence for a positive short range stimulus for cellular proliferation. *Cell Tissue Kinet.* **11**, 335–345 (1978).
 83. Tzeng, Y. S. *et al.* Loss of Cxcl12/Sdf-1 in adult mice decreases the quiescent state of hematopoietic stem/progenitor cells and alters the pattern of hematopoietic regeneration after myelosuppression. *Blood* **117**, 429–439 (2011).
 84. Nagasawa, T. *et al.* Defects of B-cell lymphopoiesis and bone-marrow myelopoiesis in mice lacking the CXC chemokine PBSF/SDF-1. *Nature* **382**, 635–638 (1996).
 85. Petit, I. *et al.* G-CSF induces stem cell mobilization by decreasing bone marrow SDF-1 and up-regulating CXCR4. *Nature Immunol.* **3**, 687–694 (2002).
 86. Ara, T. *et al.* Long-term hematopoietic stem cells require stromal cell-derived factor-1 for colonizing bone marrow during ontogeny. *Immunity* **19**, 257–267 (2003).
 87. Zou, Y. R., Kottmann, A. H., Kuroda, M., Taniuchi, I. & Littman, D. R. Function of the chemokine receptor CXCR4 in hematopoiesis and in cerebellar development. *Nature* **393**, 595–599 (1998).
 88. Ponomarev, T. *et al.* Induction of the chemokine stromal-derived factor-1 following DNA damage improves human stem cell function. *J. Clin. Invest.* **106**, 1331–1339 (2000).
 89. Dar, A. *et al.* Chemokine receptor CXCR4-dependent internalization and rescues of functional chemokine SDF-1 by bone marrow endothelial and stromal cells. *Nature Immunol.* **6**, 1038–1046 (2005).
 90. Hanoun, M. & Frenette, P. S. This niche is a maze; an amazing niche. *Cell Stem Cell* **12**, 391–392 (2013).
 91. Katayama, Y. *et al.* Signals from the sympathetic nervous system regulate hematopoietic stem cell egress from bone marrow. *Cell* **124**, 407–421 (2006).
This paper reports evidence for nervous system involvement in regulating the bone marrow HSC niche.
 92. Méndez-Ferrer, S., Lucas, D., Battista, M. & Frenette, P. S. Haematopoietic stem cell release is regulated by circadian oscillations. *Nature* **452**, 442–447 (2008).
This article demonstrates that neural circadian rhythms modulate HSC function.
 93. Casanova-Acebes, M. *et al.* Rhythmic modulation of the hematopoietic niche through neutrophil clearance. *Cell* **153**, 1025–1035 (2013).
 94. Chow, A. *et al.* Bone marrow CD169⁺ macrophages promote the retention of hematopoietic stem and progenitor cells in the mesenchymal stem cell niche. *J. Exp. Med.* **208**, 261–271 (2011).
 95. Winkler, I. G. *et al.* Bone marrow macrophages maintain hematopoietic stem cell (HSC) niches and their depletion mobilizes HSCs. *Blood* **116**, 4815–4828 (2010).
 96. Yamazaki, S. *et al.* Nonmyelinating Schwann cells maintain hematopoietic stem cell hibernation in the bone marrow niche. *Cell* **147**, 1146–1158 (2011).
 97. Kollet, O. *et al.* Osteoclasts degrade endosteal components and promote mobilization of hematopoietic progenitor cells. *Nature Med.* **12**, 657–664 (2006).
 98. Mansour, A. *et al.* Osteoclasts promote the formation of hematopoietic stem cell niches in the bone marrow. *J. Exp. Med.* **209**, 537–549 (2012).
 99. Nakada, D., Levi, B. P. & Morrison, S. J. Integrating physiological regulation with stem cell and tissue homeostasis. *Neuron* **70**, 703–718 (2011).
 100. Qian, H. *et al.* Critical role of thrombopoietin in maintaining adult quiescent hematopoietic stem cells. *Cell Stem Cell* **1**, 671–684 (2007).
 101. Yoshihara, H. *et al.* Thrombopoietin/MPL signaling regulates hematopoietic stem cell quiescence and interaction with the osteoblastic niche. *Cell Stem Cell* **1**, 685–697 (2007).
 102. Kimura, S., Roberts, A. W., Metcalf, D. & Alexander, W. S. Hematopoietic stem cell deficiencies in mice lacking c-Mpl, the receptor for thrombopoietin. *Proc. Natl Acad. Sci. USA* **95**, 1195–1200 (1998).
 103. Kaushansky, K. Thrombopoietin and the hematopoietic stem cell. *Blood* **92**, 1–3 (1998).
 104. Guerriero, A. *et al.* Thrombopoietin is synthesized by bone marrow stromal cells. *Blood* **90**, 3444–3455 (1997).
 105. Sungaran, R., Markovic, B. & Chong, B. H. Localization and regulation of thrombopoietin mRNA expression in human kidney, liver, bone marrow, and spleen using *in situ* hybridization. *Blood* **89**, 101–107 (1997).
 106. Kunisaki, Y. *et al.* Arterial niches maintain haematopoietic stem cell quiescence. *Nature* **502**, 637–643 (2013).
Histological characterization of subtypes of vascular structures and evidence that peri-arteriolar mesenchymal cells maintain HSC quiescence.
 107. Parmar, K., Mauch, P., Vergilio, J. A., Sackstein, R. & Down, J. D. Distribution of hematopoietic stem cells in the bone marrow according to regional hypoxia. *Proc. Natl Acad. Sci. USA* **104**, 5431–5436 (2007).
 108. Takubo, K. *et al.* Regulation of the HIF-1 α level is essential for hematopoietic stem cells. *Cell Stem Cell* **7**, 391–402 (2010).
 109. Lin, C. Direct measurement of local oxygen concentration in the bone marrow of live animals. *Nature* (in the press).
 110. Visnjic, D. *et al.* Conditional ablation of the osteoblast lineage in Col2.3 Δ tk transgenic mice. *J. Bone Miner. Res.* **16**, 2222–2231 (2001).
 111. Wu, J. Y. *et al.* Osteoblastic regulation of B lymphopoiesis is mediated by Gs α -dependent signaling pathways. *Proc. Natl Acad. Sci. USA* **105**, 16976–16981 (2008).
 112. Nagasawa, T., Kikutani, H. & Kishimoto, T. Molecular cloning and structure of a pre-B-cell growth-stimulating factor. *Proc. Natl Acad. Sci. USA* **91**, 2305–2309 (1994).
 113. Nie, Y., Han, Y. C. & Zou, Y. R. CXCR4 is required for the quiescence of primitive hematopoietic cells. *J. Exp. Med.* **205**, 777–783 (2008).
 114. Chow, A. *et al.* CD169⁺ macrophages provide a niche promoting erythropoiesis under homeostasis and stress. *Nature Med.* **19**, 429–436 (2013).
 115. Himburg, H. A. *et al.* Pleiotrophin regulates the expansion and regeneration of hematopoietic stem cells. *Nature Med.* **16**, 475–482 (2010).
 116. Himburg, H. A. *et al.* Pleiotrophin regulates the retention and self-renewal of hematopoietic stem cells in the bone marrow vascular niche. *Cell Rep.* **2**, 964–975 (2012).
 117. Smith-Berdan, S. *et al.* Robo4 cooperates with CXCR4 to specify hematopoietic stem cell localization to bone marrow niches. *Cell Stem Cell* **8**, 72–83 (2011).
 118. Smith-Berdan, S., Schepers, K., Ly, A., Passegue, E. & Forsberg, E. C. Dynamic expression of the Robo ligand Slit2 in bone marrow cell populations. *Cell Cycle* **11**, 675–682 (2012).
 119. Nakamura-Ishizu, A. *et al.* Extracellular matrix protein tenascin-C is required in the bone marrow microenvironment primed for hematopoietic regeneration. *Blood* **119**, 5429–5437 (2012).
 120. Stier, S. *et al.* Osteopontin is a hematopoietic stem cell niche component that negatively regulates stem cell pool size. *J. Exp. Med.* **201**, 1781–1791 (2005).
 121. Nilsson, S. K. *et al.* Osteopontin, a key component of the hematopoietic stem cell niche and regulator of primitive hematopoietic progenitor cells. *Blood* **106**, 1232–1239 (2005).
 122. Schepers, K. *et al.* Myeloproliferative neoplasia remodels the endosteal bone marrow niche into a self-reinforcing leukemic niche. *Cell Stem Cell* **13**, 285–299 (2013).
 123. Walkley, C. R. *et al.* A microenvironment-induced myeloproliferative syndrome caused by retinoic acid receptor γ deficiency. *Cell* **129**, 1097–1110 (2007).
 124. Walkley, C. R., Shea, J. M., Sims, N. A., Purton, L. E. & Orkin, S. H. Rb regulates interactions between hematopoietic stem cells and their bone marrow microenvironment. *Cell* **129**, 1081–1095 (2007).
 125. Kiel, M. J. & Morrison, S. J. Uncertainty in the niches that maintain haematopoietic stem cells. *Nature Rev. Immunol.* **8**, 290–301 (2008).

Acknowledgements S.J.M. was supported by the National Heart, Lung and Blood Institute (HL097760), the Howard Hughes Medical Institute, and the Mary McDermott Cook Chair in Pediatric Genetics. D.T.S. was supported by the National Institutes of Health (HL044851, HL096372, EB014703) and the Gerald and Darlene Jordan Chair in Medicine. We apologize to authors whose work could not be cited because of space limitations.

Author Information Reprints and permissions information is available at www.nature.com/reprints. The authors declare no competing financial interests. Readers are welcome to comment on the online version of the paper at go.nature.com/pwaf6. Correspondence should be addressed to S.J.M. (Sean.Morrison@UTSouthwestern.edu) and D.T.S. (David.Scadden@Harvard.edu).